

Product datasheet for **RG231435**

ODF2 (NM_153435) Human Tagged ORF Clone

Product data:

Product Type:	Expression Plasmids
Product Name:	ODF2 (NM_153435) Human Tagged ORF Clone
Tag:	TurboGFP
Symbol:	ODF2
Synonyms:	CT134; ODF2/1; ODF2/2; ODF84
Mammalian Cell Selection:	Neomycin
Vector:	pCMV6-AC-GFP (PS100010)
E. coli Selection:	Ampicillin (100 ug/mL)



[View online »](#)

ORF Nucleotide Sequence:

>RG231435 representing NM_153435
 Red=Cloning site Blue=ORF Green=Tags(s)

TTTTGTAATACGACTCACTATAGGGCGGCCGGAATTCGTCGACTGGATCCGGTACCGAGGAGATCTGCC
 GCC**CGGATCGCC**

ATGGGCGAGCTGCCGACCGGGTGTGCGAAAAGGAGGCGGAAGCGGGGAGGAGCCGCTGCCAGAGCCAGAC
 TGCATCCGCCGCGCGTCTCCATGGCACGACCCTGGCCTCCGACTTCAACGACTTATAAGCGCGGTTT
 CTGGGCGCAGCCGTGTCGCTCCTGGTTTCCATCGTGTGGGAAGAACGGAGTAACGAGTCTCACGCAGAAA
 AAGGTCTTGAGAGCACCTTGTCGCGCACCCAGTGAACCTGTGACGAAGCCAACCATGAAGGACCGCTCTT
 CAACTCCCCCTTACATGTTTACGTGGATGAGAACACCCTGTCCACGTCCACATAAAAAAACTCCCGAA
 ACCATCAGCGACCAGCAGCCAGAAATCTCACAAGCGAGGAATGAAAGGGGACACTGTGAATGTGCGGCGG
 AGTGTCCGGGTGAAAACCAAGAATCCACCTCATTGCCTGGAGATCACGCCACCATCTTCAGAAAAGCTGG
 TCTCAGTGATGCGGTTAAGTGACCTCTACAGAAGATGATGACTCAGGTCAGTAAAAAAGACCGTTA
 TGATAAGAAGATTGATAGTCTAATGAATCGGTTGGTTGTCTGAAGTCTGAGGTCAAGATGCAAAAAGGT
 GAGCGCCAGATGGCCAAAAGGTTCTGGAGGAACGGAAGGAAGAGCTGGAGGAGGTGGCCACGAACTGG
 CTGAGACTGAGCACGAGAACACGGTGTGAGGCACAACATCGAGCGCATGAAGGAGGAGAAGGACTTCAC
 CATACTTCAGAAGAAACCTACAACAGGAGAAGGAGTGCCTCATGTCCAAGCTGGTGGAGGCGGAAATG
 GATGGGGCTGCGGCTGCCAAGCAGGTATGGCCTTGAAGGATACCATCGGGAAGCTGAAAACGGAGAAAAC
 AAATGACCTGCACGGACATCAACACCCTGACAAGGCAGAAGGAACCTCTCCTGCAGAAGCTGAGCACATT
 TGAGGAGACCAACCGCACCTCCGAGACCTCTGAGGGAACAGCACTGCAAGAGGATTCTGAAAGACTA
 ATGGAGCAACAAGGAGCACTGCTGAAACGGCTGGCGGAGGCCGACTCAGAGAAAGCGCGCCTGCTGTTAC
 TGCTGCAAGACAAGGACAAGGAGGTGGAAGAGTCCCTTCAGAAATACAATGTGAGAAGGCTCAAGCAAA
 GACAGCCTCTGAGCTTTCTAAATCCATGGAGTCCATGCGTGGGCATTTGCAGGCACAGCTTCGGTCCAAA
 GAGGCTGAGAACAGTCGCTGTGCATGCAGATTAGAATCTGGAGCGCAGCGGAATCAGCATAAGGCAG
 AAGTGGAGGCCATCATGGAGCAGCTGAAGGAGTTGAAGCAGAAGGGAGACCGAGACAAAGAGAGCTTGAA
 GAAGGCCATCCGAGCCCAGAAGGAGCGAGCCGAGAAGAGCGAGGAGTATGCTGAGCAGCTACACGTGCAA
 CTCGCTGACAAGGATCTTTATGTCGCTGAAGCTTTATCCACTCTGGAATCCTGGAGGAGCCGCTACAACC
 AAGTTGTAAAAGAAAAGGAGACCTTGAGCTGGAATTTATGTCCTGAATGACCGGGTAACAGATCTTGT
 AAACAACAACAACCCCTGGAGGAGAAGATGCGGGAAGACCGGGATAGCCTGGTGGAGAGACTACACCGT
 CAGACTGCTGAGTATCCGCATTCAAGCTGGAGAATGAGAGGCTGAAGGCCAGCTTGTCTCAATGGAGG
 ACAAACTCAACCAGGCACACCTCGAGGTCCAGCAGCTGAAGGCCTCAGTGAAGAACTATGAGGGGATGAT
 TGACAACATAAGAGTCAGGTGATGAAGACCAGATTGGAGGCTGATGAAGTAGCTGCCAGCTAGAACGC
 TGTGACAAAGAGAACAAGATCCTTAAAGATGAGATGAACAAGAGATTGAGGCGGCACGAAGGCAGTTCC
 AGTCTCAGCTGGCTGACCTGCAGCAGCTCCCTGACATCCTGAAGATCACGGAGGCCAAGCTGGCTGAGTG
 CCAAGACCAACTGCAGGGCTATGAGCGGAAGAACATCGACCTCACAGCCATCATATCAGACCTGCGCAGC
 CGGATCGAACACCAGGGGACAAGCTGGAGATGGCGAGAGAGAAACATCAGGCTTCCCAGAAGGAAAATA
 AACAGCTGAGTCTGAAGGTGGATGAACTGGAGAGGAACTGGAGGCGACCAGTCCCAGAATATCGAGTT
 CCTACAGGTGATTGCCAAGAGGGAGGAGGCAATCCACCAGTCCCAGTCCGCTGGAGGAGAAAACACGG
 GAATGTGGGACCTGGCAAGGCAGTTGGAGAGTGCCATTGAAGATGCGAGGAGGCAGGTGGAACAACCA
 AGGAGCACGCACTCTCCAAGGAGCGAGCAGCCAGAACAATACTCTGGACCTTGAGACCCAGCTGAGCAG
 AACCAAAACGGAATTGAGCCAGCTGCGGCGGAGCCGTGATGATGCGGACCCTGCTACCAGAGCCGGCTG
 CAAGACCTGAAAGATCGCCTGGAGCAGTCCGAGAGCACAACCGCAGCATGCAGAACTACGTCCAGTTCC
 TCAATCATCATACGCCAACGTGTTGGGGATGGTCCCTATTCCACCTTCTGACTAGCTCTCCATCCG
 CTCGCGATCTCCTCTGCC

ACGCGTACGCGGCCGCTCGAG - GFP Tag - **GTTTAA**

Protein Sequence: >RG231435 representing NM_153435
 Red=Cloning site Green=Tags(s)

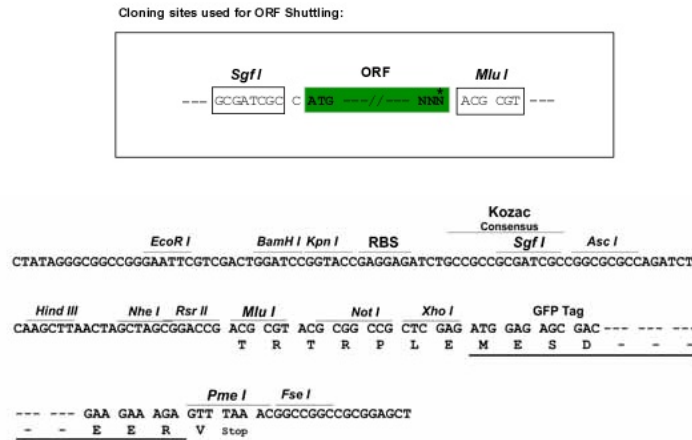
MGELPTGCRKRRRKRGGAAARLHPPRRLHGTTLASDFNDFIRRRFWAQCPSWFPSCGKNGVTSLTQK
 KVLRAPCGAPSVTVTKPTMKDRSSTPPLHVHDENTPVVHVIKPKPSATSSQKSHKRGMKGDTVNVRR
 SVRVKTKNPPHCLEITPPSSEKLVSMRLSDLSTEDDDSGHCKMNRDVKIDSLMNAVGLKSEVKMQKG
 ERQMAKRFLEERKEELEVAHELAE TEHENTVLRHNIERMKEEKDF TILQKKHLQQEKECLMSKLVEAEM
 DGAAAAQVMALKDTIGLKTQMTCTDINTLTRQKELLQKLSTFEETNRTL RDLLREQHCKEDSERL
 MEQQGALLKRLAEADSEKARLLLLLQDKDKEVEELLQEIQCEKAQAKTASELSKSMESMRGHLQAQLRSK
 EAENSRLCMQIKNLSRGNQHKAEVEAIMQLKELKQKGD RDKESLKAIRAQKERA EKSEEYAEQLHVQ
 LADKDLVVAEALSTLESWRSRYNQVVEKGDLELEIIVLNDRVTDLVNQQQTLEEKMRDRDSLVERLHR
 QTAEYSAFKLENERLKASFAPMEDKLNQAHLEVQQLKASVKNYEGMIDNYKSQVMKTRLEADEVAAQLER
 CDKENKILKDEMNI EAARRQFQSQLADLQQLPDILKITEAKLAECQDQLQGYERKNIDLTAIISDLRS
 RIEHQGDKLEMAREKHQASQKENKQLSLKVD ELERKLEATSAQNI EFLQVI AKREEAIHQSQLRLEEKTR
 ECGTLARQLESAIEDARRQVEQTKEHALSKERAAQNKILDLETQLSRTKTELSQLRRSRDDARRRYQ SRL
 QDLKDRLEQSESTNRSMQNYVQFLKSSYANVFGDGPYSTFLTSSP IRRSRPPA

TRTRPLE - GFP Tag - V

Restriction Sites:

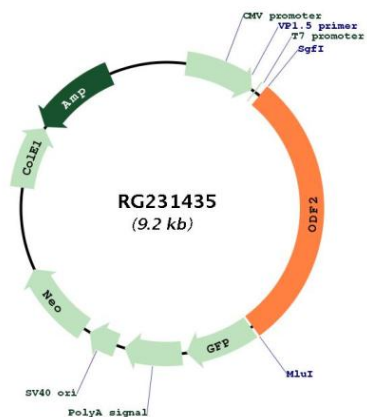
SgfI-MluI

Cloning Scheme:



ACCN:	NM_153435
ORF Size:	2679 bp
OTI Disclaimer:	The molecular sequence of this clone aligns with the gene accession number as a point of reference only. However, individual transcript sequences of the same gene can differ through naturally occurring variations (e.g. polymorphisms), each with its own valid existence. This clone is substantially in agreement with the reference, but a complete review of all prevailing variants is recommended prior to use. More info
OTI Annotation:	This clone was engineered to express the complete ORF with an expression tag. Expression varies depending on the nature of the gene.
Components:	The ORF clone is ion-exchange column purified and shipped in a 2D barcoded Matrix tube containing 10ug of transfection-ready, dried plasmid DNA (reconstitute with 100 ul of water).
Reconstitution Method:	<ol style="list-style-type: none">1. Centrifuge at 5,000xg for 5min.2. Carefully open the tube and add 100ul of sterile water to dissolve the DNA.3. Close the tube and incubate for 10 minutes at room temperature.4. Briefly vortex the tube and then do a quick spin (less than 5000xg) to concentrate the liquid at the bottom.5. Store the suspended plasmid at -20°C. The DNA is stable for at least one year from date of shipping when stored at -20°C.
RefSeq:	NM_153435.1 , NP_702913.1
RefSeq Size:	3805 bp
RefSeq ORF:	2682 bp
Locus ID:	4957
UniProt ID:	Q5BJF6
Cytogenetics:	9q34.11
Gene Summary:	The outer dense fibers are cytoskeletal structures that surround the axoneme in the middle piece and principal piece of the sperm tail. The fibers function in maintaining the elastic structure and recoil of the sperm tail as well as in protecting the tail from shear forces during epididymal transport and ejaculation. Defects in the outer dense fibers lead to abnormal sperm morphology and infertility. This gene encodes one of the major outer dense fiber proteins. Alternative splicing results in multiple transcript variants. The longer transcripts, also known as 'Cenexins', encode proteins with a C-terminal extension that are differentially targeted to somatic centrioles and thought to be crucial for the formation of microtubule organizing centers. [provided by RefSeq, Oct 2010]

Product images:



Circular map for RG231435