

Product datasheet for **RG231427**

NFATC4 (NM_001198967) Human Tagged ORF Clone

Product data:

Product Type:	Expression Plasmids
Product Name:	NFATC4 (NM_001198967) Human Tagged ORF Clone
Tag:	TurboGFP
Symbol:	NFATC4
Synonyms:	NF-AT3; NF-ATC4; NFAT3
Mammalian Cell Selection:	Neomycin
Vector:	pCMV6-AC-GFP (PS100010)
E. coli Selection:	Ampicillin (100 ug/mL)



[View online »](#)

ORF Nucleotide Sequence:

>RG231427 representing NM_001198967
 Red=Cloning site Blue=ORF Green=Tags(s)

TTTTGTAATACGACTCACTATAGGGCGGCCGGGAATTCGTCGACTGGATCCGGTACCGAGGAGATCTGCC
 GCC**CGGATCGCC**

ATGATAACCACCCTCCCATCTCTCTACCCGCCAGCCTCGCCAGTATCTCCACCAGTACGAATCTCC
 CATCTAACTCCCTCTCACACAACCAGGCTCTCCAAGCCTGACTTCCCGGAAACTCCAGTCCAGGTCT
 TCCTTCTCTCCAGCCAGGCCGGGACCTGGGGCTCCTGCCGATCCATGGGGCGGCCAGTCCGAG
 GATGAGGAGCTGGAATTTAAGCTGGTGTTCGGGGAGGAAAAGGAGGCCCGCCGCTGGGCGCGGGGGAT
 TGGGGGAAGAAGTGGACTCAGAGGATGCCCGCCATGCTGCCGTCTGGCCTGGGAGAGCCCTCCCTA
 TGGCGTGCACCTATCGGTATCCCGACCTCCACCCCTCGGCCTGGCATGCATTGCCACCGCCGCA
 CCAGCCCCCTCACCTGGCACCTGGGAGAGCCAGCCGCCAGGTGGTGGGCTGGGAGGACCAGGAGGG
 GTGCTGGGGTGTGGGGTGGCGTGTCTCGAGTGTCCAGCATCCGCATCACCTCCATCTCTCCAC
 GCCGAGCCGCCAGCAGCCTGGAGACAACCTGATGCCTGGGGGACGGCTCTCTAGAGATTACCC
 CCACCAGAAGGCTTTGGGGCTACAGAGAAGCAGGGGGCCAGGTGGGGGGCCTTCTTACGCCAAGCC
 CTGGCAGCAGCAGCTGTCTCGTGGAGCTTCTTCTCCGATGCCTCTGACGAGGCAGCCCTGTATGCAGC
 CTGCGACGAGGTGGAGTCTGAGCTAAATGAGGCGGCCTCCCGCTTGGCCTGGGCTCCCCGCTGCCCTCG
 CCCCAGGCTCCCTCGGCCATGGACCCCGAAGATCCCTGGAGCCTGTATGGTCCAAGCCCGGAGGCC
 GAGGGCCAGAGGATAGCTGGCTACTCTCAGTGTCTGGGCCACCCAGCCTCCCCGCGGCTGCCTC
 TCCATGTGGCAAGCGGCTATTCCAGCTCGGGAACCCATCTTACGCTCCCGAGCTGTGCCGCGT
 GGCAGCTGGGGAGAGGGTCTGAGCCACCTCACCCACCCATTGCCTCTGGCCGGGACCCGGCT
 CCCCTGGTCCCTTACTATGTGGGGCCCAACAGCTGAGAGCATCCCTCAGAAGACCGGACTTTC
 CAGCGAGCAGGAGTGGCTCTGCCTCGGTCTGAGGAGCCTGCCTCATGCAATGGGAAGCTGCCCTGGGA
 GCAGAGGAGTCTGTGGCTCTCCAGGAGGTTCCCGAAGGAGGTGGCTGGCATGGACTACCTGGCAGTGC
 CCTCCCCACTCGCTTGGTCCAAGGCCGGATTGGGGACACAGCCCTATCTTACGACCTCTGCCCTACC
 CCCACTGGACTGGCCTCTGCCAGCCAATATGAGCAGCTGGAGCTGAGGATCGAGGTACAGCCTAGAGCC
 CACCACCGGCCACTATGAGACAGAAGGCAGCCGTGGAGCTGTCAAAGCTGCCCTGGCGGTACCCCG
 TAGTCAAGCTCCTAGGCTACAGTGAAGCCACTGACCCTACAGATGTTTCATCGGCACTGCAGATGAAAG
 GAACCTGCGGCTCATGCCTTCTATCAGGTGCACCGTATCACAGGCAAGATGGTGGCCACGGCCAGCTAT
 GAAGCCGTAGTCAAGTGGACCAAGTGTGGAGATGACTCTGCTGCCTGAGAACAACATGGCGGCAACA
 TTGACTGCGGGGAATCCTGAAGCTTCGGAATTCAGACATTGAGCTTCGGAAGGGTGGAGCGACATCGG
 GCGCAAAAACACAGTGTACGGCTGGTGTTCGGGTACACGTGCCCCAGGGCGGCGGGAAGTCTGCTCA
 GTACAGGCAGCATCGGTGCCATCGAGTGTCCAGCGCTCAGCCAGGAGCTGCCCCAGGTGGAGGCT
 ACAGCCCCAGTGCCTGTCTGTGAGAGGAGGCGAGGAACTGGTACTGACTGGCTCCAACCTCCTGCCAGA
 CTCCAAGTGGTGTTCATTGAGAGGGTCTGATGGGAAGCTGCAATGGGAGGAGGAGGCCACAGTGAAC
 CGACTGCAGAGCAACGAGGTGACGCTGACCCTGACTGTCCCGAGTACAGCAACAAGAGGGTTTCCCGG
 CAGTCCAGGTCTACTTTATGTCTCAAATGGGCGGAGGAAACGCAGTCTACCCAGAGTTTCAGGTTTCT
 GCCTGTGATCTGCAAAGAGGAGCCCTACCGACTCATCTCTGGGGTTCCTTCCAGCATCGGCAACC
 CCTTTGGCACTGACATGGACTTCTACCACCCAGGCCCCCTACCCCTCTATCCCATGAAGACCCTG
 CTTGCGAAACTCCTTACCTATCAGAAGGCTTCGGCTATGGCATGCCCCCTCTGTACCCCAAGACGGGCC
 CCCACCATCTACAGACCGGCTGCGGATGTTCCCTGAGACTAGGGGTACCACAGTGAAGTGAATCATT
 GGCCGAGACCTGAGTGGCTTCCCTGCACCTCTGGAGAAGAGCCTCTGCC

ACGGTACGCGGCCGCTCGAG - GFP Tag - GTTTAA

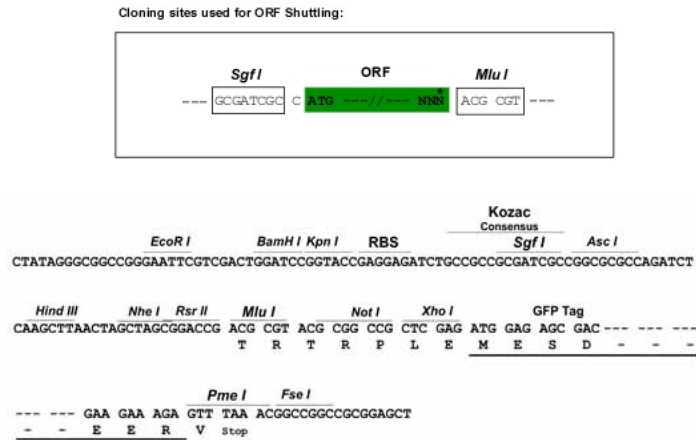
Protein Sequence: >RG231427 representing NM_001198967
 Red=Cloning site Green=Tags(s)

```

MITTLPSLLPASLASISHRVTNLPSNSLSHNPGLSKPDFPGNSSPGLPSSSSPGRDLGAPAGSMGAASCE
DEELEFKLVFGEEKEAPPLGAGGLGEELDSEDAPPCCRLALGEPPIYGAAPIGIPRPPPPRPMHSPPPR
PAPSPGTWESQPARSVRLGGPGGGAGGAGGRVLECPISIRITSIPTPEPPAALEDNPDWGDGSPRDYP
PPEGFGGYREAGGQGGGAFFSPSPGSSSLSSWSFFSDASDEAALYAACDEVESELNEAASRFGLGSPLPS
PRASPRWTPEDPWSLYGSPGGRGPEDSWLLLSAPGTPASPRPASPCGKRRYSSSGTPSSASPALSRR
GSLGEEGSEPPPPPLPLARDPGSPGPFYVYGAPPAESIPQKTRRTSSEQAVALPRSEEPASCNGKPLPG
AEESVAPPGGSRKEVAGMDYLAVPSPLAWSKARIGGHSPIFRTSALPPLDWPLPSQYEQLELRIEVQRA
HHRAYHETEGSRGAVKAAPGGHPVVKLLGYSEKPLTLQMFIGTADERNLRPHAFYQVHRITGKMOVATASY
EAVVSGTKVLEMTLLPENNMAANIDCAGILKLRNSDIELRKGETDIGRKNTRVRLVFRVHVPQGGGKVVS
VQAASVPIECSQSAQELPQVEAYSPSACSVRGGEELVLTGSNFLPDSKVVFIERGPDGKLQWEEATVN
RLQSNEVTLTLTVPEYSNKRVSRPVQVYFYVSNRRKRSPTQSFRLPVICKEEPLDSSLRGFPSASAT
PFGTDMDFSPRPPYPSYPHEDPACETPYLSEGFYGMPLLYPQTGPPPSYRPLRMFPETRGTTVSEII
GRDLSGFPAPPGEPPA
  
```

TRTRPLE - GFP Tag - V

Restriction Sites: Sgfl-MluI

Cloning Scheme:


ACCN: NM_001198967

ORF Size: 2571 bp

OTI Disclaimer: The molecular sequence of this clone aligns with the gene accession number as a point of reference only. However, individual transcript sequences of the same gene can differ through naturally occurring variations (e.g. polymorphisms), each with its own valid existence. This clone is substantially in agreement with the reference, but a complete review of all prevailing variants is recommended prior to use. [More info](#)

OTI Annotation: This clone was engineered to express the complete ORF with an expression tag. Expression varies depending on the nature of the gene.

Components: The ORF clone is ion-exchange column purified and shipped in a 2D barcoded Matrix tube containing 10ug of transfection-ready, dried plasmid DNA (reconstitute with 100 ul of water).

Reconstitution Method:

1. Centrifuge at 5,000xg for 5min.
2. Carefully open the tube and add 100ul of sterile water to dissolve the DNA.
3. Close the tube and incubate for 10 minutes at room temperature.
4. Briefly vortex the tube and then do a quick spin (less than 5000xg) to concentrate the liquid at the bottom.
5. Store the suspended plasmid at -20°C. The DNA is stable for at least one year from date of shipping when stored at -20°C.

RefSeq: [NM_001198967.2](#)

RefSeq Size: 4636 bp

RefSeq ORF: 2574 bp

Locus ID: 4776

UniProt ID: [Q14934](#)

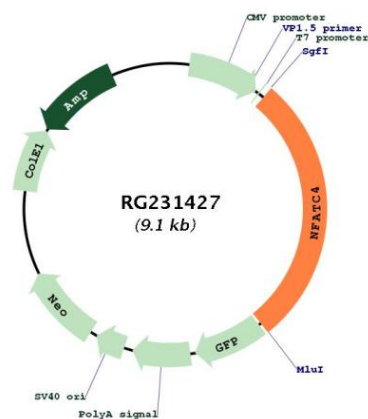
Cytogenetics: 14q12

Protein Families: Druggable Genome, Transcription Factors

Protein Pathways: Axon guidance, B cell receptor signaling pathway, MAPK signaling pathway, Natural killer cell mediated cytotoxicity, T cell receptor signaling pathway, VEGF signaling pathway, Wnt signaling pathway

Gene Summary: This gene encodes a member of the nuclear factor of activated T cells (NFAT) protein family. The encoded protein is part of a DNA-binding transcription complex. This complex consists of at least two components: a preexisting cytosolic component that translocates to the nucleus upon T cell receptor stimulation and an inducible nuclear component. NFAT proteins are activated by the calmodulin-dependent phosphatase, calcineurin. The encoded protein plays a role in the inducible expression of cytokine genes in T cells, especially in the induction of interleukin-2 and interleukin-4. Alternative splicing results in multiple transcript variants. [provided by RefSeq, Jan 2014]

Product images:



Circular map for RG231427

