

## Product datasheet for **RG231426**

### CD130 (IL6ST) (NM\_001190981) Human Tagged ORF Clone

#### Product data:

Product Type:	Expression Plasmids
Product Name:	CD130 (IL6ST) (NM_001190981) Human Tagged ORF Clone
Tag:	TurboGFP
Symbol:	IL6ST
Synonyms:	CD130; CDW130; GP130; HIES4; IL-6RB; sGP130
Mammalian Cell Selection:	Neomycin
Vector:	pCMV6-AC-GFP (PS100010)
E. coli Selection:	Ampicillin (100 ug/mL)



[View online »](#)

ORF Nucleotide  
Sequence:

>RG231426 representing NM\_001190981  
Red=Cloning site Blue=ORF Green=Tags(s)

TTTTGTAATACGACTCACTATAGGGCGGCCGGGAATTCGTCGACTGGATCCGGTACCGAGGAGATCTGCC  
GCC**CGCATCGCC**

ATGTTGACGTTGCAGACTTGGCTAGTGCAGCCTTGTTTATTTTCTCACCAGTGAATCTACAGGTGAAC  
TTCTAGATCCATGTGGTTATATCAGTCCTGAATCTCCAGTTGTACAACCTCATTCTAATTTCACTGCAGT  
TTGTGTGCTAAAGGAAAAATGTATGGATTATTTTCATGTAATGCTAATTACATTGTCTGAAAAACAAAC  
CATTTTACTATTCTAAGGAGCAATATACTATCATAAACAGAACAGCATCCAGTGTACCTTTACAGATA  
TAGCTTCATTAATATTCAGCTCACTTGAACATTCTTACATTCCGACAGCTTGAACAGAATGTTTATGG  
AATCACAATAATTTAGGCTTGCCTCCAGAAAAACCTAAAAATTTGAGTTGCATTGTGAACGAGGGGAAG  
AAAATGAGGTGTAGTGGGATGGTGAAGGAAACACACTGGAGACAACTTCACTTTAAATCTGAAT  
GGCAACACACAAGTTTCTGATTGCAAGCAAAACGTGACACCCACCTCATGCAGTGTGATTATTC  
TACTGTGATTTTGTCAACATTGAAGTCTGGGTAGAAGCAGAGAATGCCCTTGGGAAGGTTACATCAGAT  
CATATCAATTTTGTATCTGTATATAAAGTGAAGCCCAATCCGCCACATAATTTATCAGTGTCAACTCAG  
AGGAACTGTCTAGTATCTTAAAATTGACATGGACCAACCAAGTATTAAGAGTGTATAATACTAAAATA  
TAACATTCAATATAGGACCAAAGATGCCTCAACTTGGAGCCAGATTCTCCTGAAGACACAGCATCCACC  
CGATCTTCATTCACTGTCCAAGACCTTAAACCTTTACAGAATATGTGTTTAGGATTCGCTGTATGAAGG  
AAGATGGTAAGGGATACTGGAGTACTGGAGTGAAGAAGCAAGTGGGATCACCTATGAAGATAGACCATC  
TAAAGCACCAAGTTTCTGGTATAAAATAGATCCATCCCATACTCAAGGCTACAGAAGTGTACAACCTGTG  
TGAAGACATTGCCTCCTTTTGAAGCAATGGAAAACTTGGATTATGAAGTACTCTCACAAGATGGA  
AATCACATTTACAAAATTACACAGTTAATGCCACAAAACACTGACAGTAAATCTCACAAGATCGCTATCT  
AGCAACCTAACAGTAAGAAATCTTGTGGCAAATCAGATGCAGCTGTTTTAACTATCCCTGCCTGTGAC  
TTTCAAGGGAACCTAGCAGAGAGCAATGCTATTTGATAACAGTTACTCCAGTATATGCTGATGGACCAG  
GAAGCCCTGAATCCATAAAGGCATACCTTAAACAGCTCCACCTTCAAAGGACCTACTGTTCCGACAAA  
AAAAGTAGGAAAAACGAAGCTGTCTTAGAGTGGGACCAACTTCTGTTGATGTTCAGAATGGATTTATC  
AGAAATTACTATATTTTATAGAACCATTGGAAATGAAACTGCTGTGAATGTGGATTCTTCCACA  
CAGAATATACATTGTCTCTTTGACTAGTGACACATTGTACATGGTACGAATGCCAGCATACACAGATGA  
AGGTGGGAAGGATGGTCCAGAATCACTTTTACTACCCAAAGTTTGTCAAGGAGAAAATGAAGCCATA  
GTCGTGCCTGTTGCTTAGCATTCTATTGACAACTCTTCTGGGAGTGTCTGCTTTAATAAGCGAG  
ACCTAATTAACAAAACACATCTGGCCTAATGTTCCAGATCCTTCAAAGAGTCATATTGCCAGTGGTCACC  
TCACACTCCTCCAAGGCACAATTTAATCAAAAGATCAATGTATTAGATGGCAATTTCACTGATGTA  
AGTGTGTGGAAATAGAAGCAAATGACAAAAAGCCTTTTCCAGAAGATCTGAAATCATTGGACCTGTTCA  
AAAAGGAAAAAATTAATACTGAAGGACACAGCAGTGGTATTGGGGGGTCTTCATGCATGTCATCTCTAG  
GCCAAGCATTCTAGCAGTGTGAAAATGAATCTTACAAAACACTTCGAGCACTGTCCAGTATTCTACC  
GTGGTACACAGTGGCTACAGACCAAGTCCGTCAAGTCTTCTCAAGATCCGAGTCTACCCAGC  
CCTTGTAGATTAGAGGAGCGGCCAGAAGATCTACAATTAGTAGATCATGTAGATGGCGGTGATGGTAT  
TTTGCCAGGCAACAGTACTTCAAACAGAACTGCAGTCAAGTGAATCCAGTCCAGATATTTACATTTT  
GAAAGGTCAAAGCAAGTTTCATCAGTCAATGAGGAAGATTTTGTAGACTTAAACAGCAGATTTTCAGATC  
ATATTTACAATCCTGTGGATCTGGGCAAATGAAATGTTTCAGGAAGTTTCTGCAGCAGATGCTTTTGG  
TCCAGGTAAGGACAAAGTAGAAAGATTTGAAACAGTTGGCATGGAGGCTGCGACTGATGAAGGCATG  
CCTAAAAGTTACTTACCACAGACTGTACGGCAAGGCGGCTACATGCCTCAG

**ACGCGT**ACGCGGCCGCTCGAG – GFP Tag – GTTTAA

**Protein Sequence:** >RG231426 representing NM\_001190981  
Red=Cloning site Green=Tags(s)

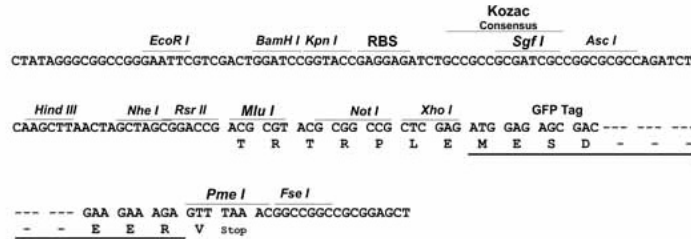
MLTLQTWLVQALFIFLTTESTGELLDPGYSIPESPVVQLHSNFTAVCVLKEKCMDYFHVNANYIVWKTN  
HFTIPKEQYTIINRTASSVTFTDIASLNIQLTCNILTFGQLEQNVYGITIISGLPPEKPKNLSCIVNEGK  
KMRCEWDGGRETHLETNFTLKSEWATHKFADCKAKRDTPTSTVDYSTVYFVNIEVWVEAENALGKVTSD  
HINFDPVYKVKPNPPHNSVINSEELSSILKLTWTNPSIKSVIILKYNIQYRTKDASTWSQIPPEDTAST  
RSSFTVQDLKPFTEYVFRIRCMKEDGKGYWSDWSEEASGITYEDRPSKAPSFWKIDPSHTQGYRTVQLV  
WKTLPPEANGKILDYEVTLTRWKSHLQNYTVNATKLTVNLNDRYLATLTVRNLVGKSDAAVLTIPACD  
FQGNLAESKCYLITVTPVYADGPGSPESIKAYLKQAPPSKGPTVRTKVKVGNKNEAVLEWDQLPVDVQNGFI  
RNYTIFYRTIIGNETAVNVDSSTHEYTLSSLTSDTLYMVRMAAYTDEGGKDGPEFTFTPKFAQGEIEAI  
VVPVCLAFLLTLLGVLFCFNKRDLIKKHIWPNVPDPSKSHIAQWSPHTPPRHNFNSKDQMYSDGNFTDV  
SVVEIEANDKKPFPEDLKSLDLFKKEKINTEGHSSGIGGSSCMSSSRPISSSDENESSQNTSSTVQYST  
VVHSGYRHRQVPSVQVFSRSESTQPLLDSEERPDLQLVDHVDGGDGLPRQQYFKQNCQSHESSPDISHF  
ERSKQVSSVNEEDFVRLKQQISDHSIQSCGSGQMFMFQEVSAADAFGPGTEGQVERFETVGMEEATDEGM  
PKSYLPQTVRQGGYMPQ

TRTRPLE - GFP Tag - V

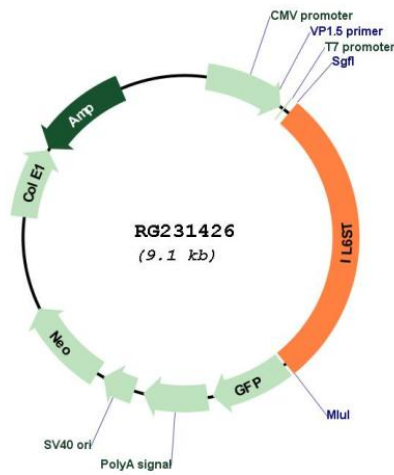
**Restriction Sites:** Sgfl-MluI

Cloning Scheme:

Cloning sites used for ORF Shutting:



Plasmid Map:



<b>ACCN:</b>	NM_001190981
<b>ORF Size:</b>	2571 bp
<b>OTI Disclaimer:</b>	The molecular sequence of this clone aligns with the gene accession number as a point of reference only. However, individual transcript sequences of the same gene can differ through naturally occurring variations (e.g. polymorphisms), each with its own valid existence. This clone is substantially in agreement with the reference, but a complete review of all prevailing variants is recommended prior to use. <a href="#">More info</a>
<b>OTI Annotation:</b>	This clone was engineered to express the complete ORF with an expression tag. Expression varies depending on the nature of the gene.
<b>Components:</b>	The ORF clone is ion-exchange column purified and shipped in a 2D barcoded Matrix tube containing 10ug of transfection-ready, dried plasmid DNA (reconstitute with 100 ul of water).
<b>Reconstitution Method:</b>	<ol style="list-style-type: none"><li>1. Centrifuge at 5,000xg for 5min.</li><li>2. Carefully open the tube and add 100ul of sterile water to dissolve the DNA.</li><li>3. Close the tube and incubate for 10 minutes at room temperature.</li><li>4. Briefly vortex the tube and then do a quick spin (less than 5000xg) to concentrate the liquid at the bottom.</li><li>5. Store the suspended plasmid at -20°C. The DNA is stable for at least one year from date of shipping when stored at -20°C.</li></ol>
<b>RefSeq:</b>	<a href="#">NM_001190981.2</a>
<b>RefSeq Size:</b>	8888 bp
<b>RefSeq ORF:</b>	2574 bp
<b>Locus ID:</b>	3572
<b>UniProt ID:</b>	<a href="#">P40189</a>
<b>Cytogenetics:</b>	5q11.2
<b>Protein Families:</b>	Druggable Genome, Secreted Protein, Transmembrane
<b>Protein Pathways:</b>	Cytokine-cytokine receptor interaction, Jak-STAT signaling pathway
<b>Gene Summary:</b>	The protein encoded by this gene is a signal transducer shared by many cytokines, including interleukin 6 (IL6), ciliary neurotrophic factor (CNTF), leukemia inhibitory factor (LIF), and oncostatin M (OSM). This protein functions as a part of the cytokine receptor complex. The activation of this protein is dependent upon the binding of cytokines to their receptors. vIL6, a protein related to IL6 and encoded by the Kaposi sarcoma-associated herpesvirus, can bypass the interleukin 6 receptor (IL6R) and directly activate this protein. Knockout studies in mice suggest that this gene plays a critical role in regulating myocyte apoptosis. Alternatively spliced transcript variants have been described. A related pseudogene has been identified on chromosome 17. [provided by RefSeq, May 2014]