

Product datasheet for **RG231419**

AOPEP (NM_001193329) Human Tagged ORF Clone

Product data:

Product Type:	Expression Plasmids
Product Name:	AOPEP (NM_001193329) Human Tagged ORF Clone
Tag:	TurboGFP
Symbol:	AOPEP
Synonyms:	AP-O; APO; C9orf3; C9ORF3; ONPEP
Mammalian Cell Selection:	Neomycin
Vector:	pCMV6-AC-GFP (PS100010)
E. coli Selection:	Ampicillin (100 ug/mL)



[View online »](#)

ORF Nucleotide Sequence:

>RG231419 representing NM_001193329
 Red=Cloning site Blue=ORF Green=Tags(s)

TTTTGTAATACGACTCACTATAGGGCGGCCGGAATTCGTGACTGGATCCGGTACCGAGGAGATCTGCC
 GCC**CGGATCGCC**

ATGGACATACAGCTGGACCTGCCAGAGATGACCTGCCTCTCATGGCCAACACCAGCCACATACTTGTGA
 AGCACTATGTAAGTGGATTTGGATGTGGATTTTGAAGTCAAGTCATTGAGGGGACCATAGTGCTTTTCCT
 CGAGGATGGAAACAGATTCAAGAAACAGAAATAGCTCTATTGAGGAAGCCTGCCAATCAGAATCAAACAAA
 GCCTGCAAATTTGGGATGCCTGAACCTGCCATATCCCGTGACAAATGCAAGGACCTTCTCATCTGAAA
 TGGAAATAATGATTTTGAATCTGTAGTAAAGGTGAAAAAGATACTTCTGATAAAGATGGTAACCATGA
 CAACCAGGAACATGCTTCTGGGATTTCTAGCTCAAAGTACTGCTGTGACACAGGGAAATCATGGGAGTGAG
 GATTTTTTGTAGTGTGGACTGCTGTGATTTATCTGTGTTAAAAGTCGAGGAGGTGGATGTTGCTGCTG
 TGCCAGGTCTGGAAAAATTTACAAGTCTCCTGAGCTCACGGTTGTTTCTGAGGAGTTCAGGAATCAGAT
 TGTACGTGAACCTGTGACTTTGCCTGCAAATCGTTGGAGGGAGCAGTTAGACTATTACGCTCGCTGCAGC
 CAGGCTCCTGGCTGTGGGAACTCCTCTTTGACACTGACACTGGAGCTTGACAGATAAGGAAGACAGGGG
 CTCAGACAGCTACTGACTTTCTCATGCTATCAGGATATGGTACAAAACAACTAAACCTGAAGGGCGATCCGGT
 TACATGGACCTCAGACCAGAGTGGCAGGCCATGTGTTTATACTGTGGGATCTCCCATAAACAACAGGGCC
 CTTTTCCATGCCAGGAGCCACCCGTTGCCATGTCAACATGGCAGGCTACAGTTCGAGCAGCTGCATCTT
 TTGTTGTTTTAATGAGTGGGGAAAATTTGCCAAACCAACGCAGCTTTGGGAAGAGTGCTCAAGCTGGTA
 TTAATAATGTAACATGCCAATGCCAGCTCCACCTTACAATTGCAGTGGGATGCTGGACAGAAATGAAG
 ATGGAGACATGGTCATCAAATGATTTGGCAACAGAGAGACCCTTCTCACCTTCTGAGGCCAACTCAGGC
 ATGTTGGTGTTCAGTCACATGGAATACCCCTGCCGCTTCCAGAATGCTTCTGCCACCACCCAGGAGAT
 CATTCTCATCGGTCTTTGCCCTGTGTGCCTCACGGGTGCCTGCCAAGAGACCCTTCTGCGGCTGATC
 CCTCCTTGCTCTCAGCAGCACATTCTGTTCTGGGAGCACACCCGTTCTCTCGGCTGGATGTTCTCATCG
 TCCCTGCCAACTTTCCAAGTCTGGGGATGGCCAGCCACACATCATGTTCTCTCTCAGAGCATCTTGAC
 AGGAGGGAACCATCTCTGTGGGACCCGCTCTGCCATGAAATGCCATGCCTGGTTTGGCTAGCCATC
 GGGGCCGAGACTGGACGGAGGAGTGGCTGAGTGAAGGCTTCGCCACTCACTTGGAGGATGTGTTTTGGG
 CCACAGCACAGCAGCTGGCCCCATGAGGCCCGGGAGCAGCAGGAGCTGAGGGCTTGCTGCGCTGGCG
 TCGCTCCAGGACGAGATGCAATGCTCCCCGAGGAGATGCAGGTGTTAAGACCCAGTAAAGACAAAAC
 GGCCACACAAGTACTCGGGAGCATCTGTTATCAAGCATGGACTTAATCCGGAGAAGATCTTCATGCAGG
 TGCAATATTTAAAGGGCTACTTCCTTCTCGGTTTCTTGCCAAAAGACTTGGAGATGAAACCTATTTTTC
 ATTTTTAAGAAAATTTGTGCACACATTTTCATGGACAGCTGATTCTTTCCAGGATTTCTTCAAATGCTA
 CTGGAGAACATTCAGAAGAAAAAGGCTTGAGCTGTCTGTTGAAAACATCTACCAAGACTGGCTTGAGA
 GTTCCGGAATACCAAAGCCGCTGCAGAGGGAGCGTTCGCGCCGGGGCGGAGTGCAGGCTTGCAGCGCAAGT
 GCGCGCCGAGGTCACGAAATGGATTGGAGTGAACCGGAGACCCCGAAAACGGAAGCGCAGGGAGAAGGAA
 GAGGTGTTTAAAAGCTTCTCCAGACCAGCTGGTCTTGTCTTGGAGCATCTCTTGGAGCAGAAGACTC
 TGAGCCCCGAACTCTGCAAAGCCTCCAGAGGACATACCACCTCCAGGATCAGGATGCAGAGTTCCGCCA
 TCGGTGGTGTGAACTCATTGTTAAGCACAAAGTTCACGAAAAGCTACAAAAGTGTGGAGAGGTTCTTCAG
 GAGGATCAGGCCATGGGTGTGTACCTCTACGGGGAGCTGATGGTGAAGTGAAGACGGCAGACAGCAGCAGC
 TCGCCCGTAGGTGCTTCGAGCGGACCAAGGAGCAGATGGATAGGTCTCAGCCCAGGTGGTGGCCGAAAT
 GTTATTT

ACGCGTACGCGGCCGCTCGAG - GFP Tag - GTTTAA

Protein Sequence: >RG231419 representing NM_001193329
Red=Cloning site Green=Tags(s)

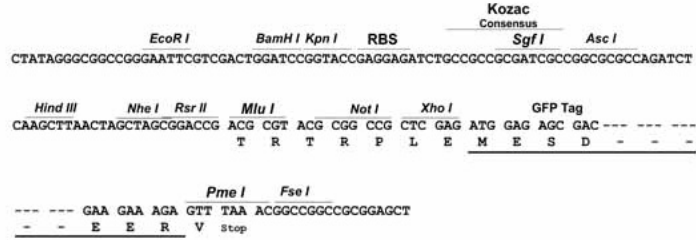
MDIQLDPARDDLPLMANTSHILVKHYVLDLVDVFESQVIEGTIVLFLEDGNRFKKQNSSIEEACQSESNK
ACKFGMPEPCHIPVTNARTFSSEMEYNDFAIKSKGEKDTSDKDGNHDNQEHASGISSSKYCCDTGNHGSE
DFLLVLDCCDL SVLKVEEVDVAAVPGLEKFTRSPELTVVSEEFRNQIVRELVTL PANRWREQLDYYARCS
QAPGCGELLFDTD TWSLQIRKTGAQTATDFPHAIRIWKTKPEGRSVTWTSDQSGRPCVYTVGSPINNRA
LFPCQEPPVAMSTWQATVRAAASFVVLMSGENSAKPTQLWEECSSWYYYVTMPMPASTFTI AVGCWTEMK
METWSSNDLATERPFPSEANFRHVGVC SHMEYPCRFQNASATTQEIIPHRVFAPVCLTGACQETLLRLI
PPCLSAAHSVLGAHPFSRLDVLIVPANFPSLGMASPHIMFLSQSILTGGNHL CGTRLCHEIAHAWFGLAI
GARDWTEEWLSEGFATHLEDVFWATAQQLAPYEAREQQELRACLRWRRLQDEMQCSPEEMQVLRPSKDKT
GHTSDSGASVIKHGLNPEKIFMQVHYLKG YLLRFLAKRLGDETYFSFLRKFVHTFHGQLILSQDFLQML
LENIPEEKRELSVENIYQDWLESSGIPKPLQRERRAGAECGLARQVRAEVTKWIGVNRPRKRKRREKE
EVFEKLLPDQLVLLLEHLL EQTLSPRTLQSLQRTYHLQDQDAEVRHRWCELIVKHKFTKAYKSVERFLQ
EDQAMGVVLYGELMVSEDARQQQLARRCFERTKEQMDRSSAQVVAEMLF

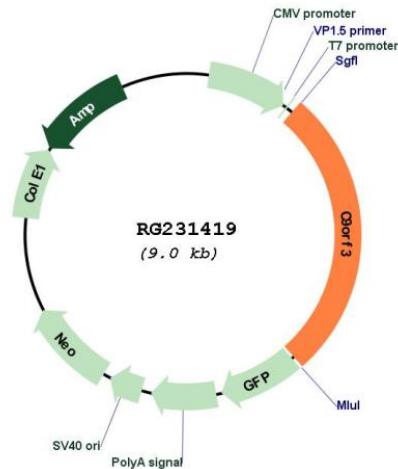
TRTRPLE - GFP Tag - V

Restriction Sites: Sgfl-Mlul

Cloning Scheme:

Cloning sites used for ORF Shutting:



Plasmid Map:


ACCN: NM_001193329

ORF Size: 2457 bp

OTI Disclaimer: The molecular sequence of this clone aligns with the gene accession number as a point of reference only. However, individual transcript sequences of the same gene can differ through naturally occurring variations (e.g. polymorphisms), each with its own valid existence. This clone is substantially in agreement with the reference, but a complete review of all prevailing variants is recommended prior to use. [More info](#)

OTI Annotation: This clone was engineered to express the complete ORF with an expression tag. Expression varies depending on the nature of the gene.

Components: The ORF clone is ion-exchange column purified and shipped in a 2D barcoded Matrix tube containing 10ug of transfection-ready, dried plasmid DNA (reconstitute with 100 ul of water).

Reconstitution Method:

1. Centrifuge at 5,000xg for 5min.
2. Carefully open the tube and add 100ul of sterile water to dissolve the DNA.
3. Close the tube and incubate for 10 minutes at room temperature.
4. Briefly vortex the tube and then do a quick spin (less than 5000xg) to concentrate the liquid at the bottom.
5. Store the suspended plasmid at -20°C. The DNA is stable for at least one year from date of shipping when stored at -20°C.

RefSeq: [NM_001193329.1](#), [NP_001180258.1](#)

RefSeq Size: 3145 bp

RefSeq ORF: 2460 bp

Locus ID: 84909

UniProt ID: [Q8N6M6](#)

Cytogenetics: 9q22.32

Protein Families: Protease

Gene Summary: This gene encodes a member of the M1 zinc aminopeptidase family. The encoded protein is a zinc-dependent metallopeptidase that catalyzes the removal of an amino acid from the amino terminus of a protein or peptide. This protein may play a role in the generation of angiotensin IV. Alternate splicing results in multiple transcript variants. [provided by RefSeq, Oct 2010]