

## Product datasheet for **RG231413**

### **PTPN22 (NM\_001193431) Human Tagged ORF Clone**

#### **Product data:**

Product Type:	Expression Plasmids
Product Name:	PTPN22 (NM_001193431) Human Tagged ORF Clone
Tag:	TurboGFP
Symbol:	PTPN22
Synonyms:	LYP; LYP1; LYP2; PEP; PTPN8; PTPN22.5; PTPN22.6
Mammalian Cell Selection:	Neomycin
Vector:	pCMV6-AC-GFP (PS100010)
E. coli Selection:	Ampicillin (100 ug/mL)



[View online »](#)

ORF Nucleotide  
Sequence:

>RG231413 representing NM\_001193431  
 Red=Cloning site Blue=ORF Green=Tags(s)

TTTTGTAATACGACTCACTATAGGGCGGCCGGAATTCGTCGACTGGATCCGGTACCGAGGAGATCTGCC  
 GCC**CGGATCGCC**

ATGGACCAAGAGAAATTCTGCAGAAGTTCCTGGATGAGGCCAAAGCAAGAAAATTACTAAAGAGGAGT  
 TTGCCAATGAATTTCTGAAGCTGAAAAGGCAATCTACCAAGTACAAGGCAGACAAAACCTATCCTACAAC  
 TGTGGCTGAGAAGCCCAAGAATATCAAGAAAAACAGATATAAGGATATTTTGGCCCTATGATTATAGCCGG  
 GTAGAACTATCCCTGATAACCTCTGATGAGGATCCAGCTACATCAATGCCAACTTCATTAAGGGAGTTT  
 ATGGACCAAGGCTTATATTGCCACCCAGGGTCTTTTCTACAACCTCCTGGACTTCTGGAGGATGAT  
 TTGGGAATATAGTGTCTTATCATTGTTATGGCATGCATGGAGTATGAAATGGGAAAGAAAAAGTGTGAG  
 CGCTACTGGGCTGAGCCAGGAGAGATGCAGCTGGAATTTGGCCCTTCTCTGTATCCTGTGAAGCTGAAA  
 AAAGGAAATCTGATTATATAATCAGGACTCTAAAAGTTAAGTTCAATAGTAAACTCGAACTATCTACCA  
 GTTTCATTACAAGAATTGGCCAGACCATGATGTACCTTCATCTATAGACCCTATTCTTGAGCTCATCTGG  
 GATGTACGTTGTTACCAAGAGGATGACAGTGTTCCCATATGCATTCACTGCAAGTGTGGCTGTGGAAAGGA  
 CTGGTGTATTTGTGCTATTGATTATACATGGATGTTGCTAAAAGATGGGATAATTCCTGAGAACTTCAG  
 TGTTTTGAGTTTATCCGGGAAATGCGGACACAGAGGCCTTCATTAGTTCAAACGCAGGAACAATATGAA  
 CTGGTCTACAATGCTGTATTAGAATAATTAAGAGACAGATGGATGTTATCAGAGATAAACATTCCTGGAA  
 CAGAGAGTCAAGCAAAGCATTGTATTCTGAGAAAAATCACACTCTCCAAGCAGACTCTTATTCTCCTAA  
 TTTACCAAAAAGTACCACAAAAGCAGCAAAAATGATGAACCAACAAGGACAAAAATGGAATCAAAGAA  
 TCTTCTCCTTTGACTTTAGGACTTCTGAAATAAGTGCAAAAAGAGAGCTAGTTTTGCACCCTGCTAAAT  
 CAAGCACTTCTTTGACTTTCTGGAGCTAAATTACAGTTTTGACAAAAATGCTGACACAACCATGAAATG  
 GCAGACAAAGGCATTTCCAATAGTTGGGAGCCTCTTCAGAAGCATCAAAGTTTGGATTTGGGCTCTCTT  
 TTGTTTGAGGGATGTTCTAATTCTAAACCTGTAATGCAGCAGGAAGATATTTAATTCAAAGGTGCCAA  
 TAACACGGACCAATCAACTCCTTTTGAATTGATACAGCAGAGAGAAACCAAGGAGGTGGACAGCAAGGA  
 AAACCTTTCTTATTTGGAATCTCAACCACATGATTCTTGTGTTTGTAGAGATGCAGGCTCAAAAAGTAATG  
 CATGTTTCTTTCAGCAGAAGTGAATTATTCAGTCCATATGACTCTAAACACCAAATACGTAATGCCTCTA  
 ATGTAAGCACCATGACTCTAGTGCTCTTGGTGTATATTCTTACATACCTTTAGTGGAAAATCCTTATTT  
 TTCATCATGGCCTCCAAGTGGTACCAGTCTAAGATGTCTCTTGATTTACCTGAGAAGCAAGATGGAAC  
 GTTTTTCTTCTCTCTGTTGCCAACATCCTCTACATCCCTCTTCTCTTATTACAATTCACATGATTCTT  
 TATCACTGAATTCACCACAATATTTCTCACTATTGAACCAGGAGTCAGCTGTACTAGCAACTGCTCC  
 AAGGATAGATGATGAAATCCCCCTCCACTTCTGTACGGACACCTGAATCATTTATTGTGGTTGAGGAA  
 GCTGGAGAATTCTCACCAATGTTCCCAATCCTTATCCTCAGCTGTGAAGAGTGTAAAACCTCCGAAGTC  
 CTAATCAGAAGTACATCAAGATCGTTCCTTCTCCCCACCTCCTCTCCAGAAAAGAACTCTAGAGTCCTT  
 CTTTCTTGCCGATGAAGATTGTATGCAGGCCCAATCTATAGAAACATATTCTACTAGCTATCCTGACACC  
 ATGGAAAATTCAACATCTTCAAAACAGACACTGAAGACTCCTGGAAAAAGTTTACAAGGAGTAAGAGTT  
 TGAATAATTTGCGAAAACATGAAAAAGAGTATCTGTAATTTGCCCACCAACAAGCCTGCAGAATCTGT  
 TCAGTCAATAACTCCAGCTCATTCTGAATTTGGTTTTGCAAACCGTTTTTTCAAACCCAAAGGACCA  
 AGGAATCCACCACCAACTTGAATATT

ACGCGTACGCGGCCGCTCGAG - GFP Tag - GTTTAA

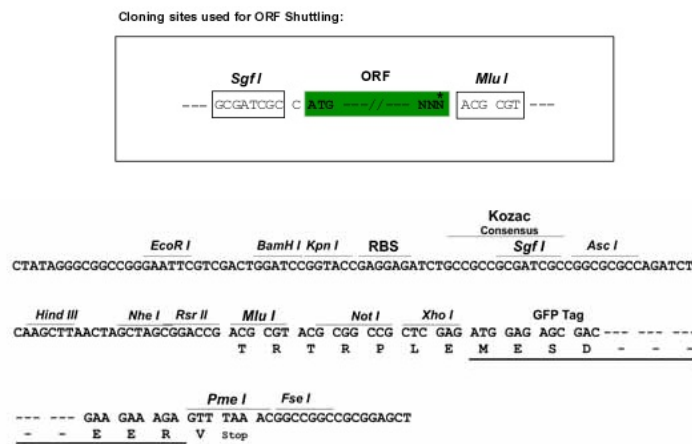
**Protein Sequence:** >RG231413 representing NM\_001193431  
Red=Cloning site Green=Tags(s)

```
MDQREILQKFLDEAQSKITKEEFANFLKLRQSTKYKADKTYPTTVAEKPKNIKKNRYKDILPYDYSR
VELSLITSDDESSYINANFIKGVYGPKAYIATQGPLSTLLDFWRMIWEYSVLIIVMACMEYEMGKKKCE
RYWAEPGEMQLEFGPFSVSCEAEKRKSDYIIRTLKVKFNSETRTIYQFHYKNWPDHVPSSIDPILELIW
DVRCYQEDDSVPICIHCSAGCGRTGVICAIDYTWMLLKDGIIPENFSVFLIREMRTQRPVSLVQTQEYVE
LVYNAVLELFKRQMDVIRDKHSGTESQAKHCIPKHNHTLQADSYPNLPKSTTTAAKMMNQRTKMEIKE
SSSDFDRTSEISAKEELVLHPAKSSTSFDFLELNYSFDKNADTTMKWQTKAFPIVGEPLQKHQSLDLGSL
LFEGCSNSKPVNAAGRYFNSKVPITRTRKSTPFELIQQRETKEVDSKENFSYLESQPHDSCFVEMQAQKVM
HVSSAELNYSPLPYDSKHQIRNASNVKHHDSALGVYSYIPLVENPYFSSWPPSGTSSKMSLDLPEKQDGT
VFPSSLLPTSSTLSFSYNSHDSLSLNSPTNISSLLNQESAVLATAPRIDDEIPPLPVRTPEFIVVEE
AGEFSPNVPKSLSSAVKSVKLRSPKSELHQDRSSPPPPLPERTLESFFLADEDCMQAQSIETYSTSPYDT
MENSTSSKQTLKTPGKSFTRSKSLKILRNMKKSICNSCPPNPKAESVQSNSSSFLNFGFANRFSKPKPG
RNPPPTWNI
```

TRTRPLE - GFP Tag - V

**Restriction Sites:** SgfI-MluI

**Cloning Scheme:**



**ACCN:** NM\_001193431

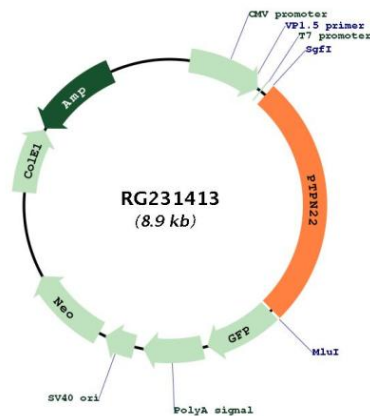
**ORF Size:** 2337 bp

**OTI Disclaimer:** The molecular sequence of this clone aligns with the gene accession number as a point of reference only. However, individual transcript sequences of the same gene can differ through naturally occurring variations (e.g. polymorphisms), each with its own valid existence. This clone is substantially in agreement with the reference, but a complete review of all prevailing variants is recommended prior to use. [More info](#)

**OTI Annotation:** This clone was engineered to express the complete ORF with an expression tag. Expression varies depending on the nature of the gene.

- Components:** The ORF clone is ion-exchange column purified and shipped in a 2D barcoded Matrix tube containing 10ug of transfection-ready, dried plasmid DNA (reconstitute with 100 ul of water).
- Reconstitution Method:**
1. Centrifuge at 5,000xg for 5min.
  2. Carefully open the tube and add 100ul of sterile water to dissolve the DNA.
  3. Close the tube and incubate for 10 minutes at room temperature.
  4. Briefly vortex the tube and then do a quick spin (less than 5000xg) to concentrate the liquid at the bottom.
  5. Store the suspended plasmid at -20°C. The DNA is stable for at least one year from date of shipping when stored at -20°C.
- RefSeq:** [NM\\_001193431.2](#)
- RefSeq Size:** 3588 bp
- RefSeq ORF:** 2340 bp
- Locus ID:** 26191
- UniProt ID:** [Q9Y2R2](#)
- Cytogenetics:** 1p13.2
- Protein Families:** Druggable Genome, Phosphatase
- Gene Summary:** This gene encodes of member of the non-receptor class 4 subfamily of the protein-tyrosine phosphatase family. The encoded protein is a lymphoid-specific intracellular phosphatase that associates with the molecular adapter protein CBL and may be involved in regulating CBL function in the T-cell receptor signaling pathway. Mutations in this gene may be associated with a range of autoimmune disorders including Type 1 Diabetes, rheumatoid arthritis, systemic lupus erythematosus and Graves' disease. Alternatively spliced transcript variants encoding distinct isoforms have been described. [provided by RefSeq, Mar 2009]

**Product images:**



Circular map for RG231413