

Product datasheet for **RG231411**

DENND1B (NM_001195215) Human Tagged ORF Clone

Product data:

Product Type:	Expression Plasmids
Product Name:	DENND1B (NM_001195215) Human Tagged ORF Clone
Tag:	TurboGFP
Symbol:	DENND1B
Synonyms:	C1ORF18; C1orf218; FAM31B
Mammalian Cell Selection:	Neomycin
Vector:	pCMV6-AC-GFP (PS100010)
E. coli Selection:	Ampicillin (100 ug/mL)



[View online »](#)

ORF Nucleotide Sequence:

>RG231411 representing NM_001195215
 Red=Cloning site Blue=ORF Green=Tags(s)

TTTTGTAATACGACTCACTATAGGGCGGCCGGAATTCGTCGACTGGATCCGGTACCGAGGAGATCTGCC
 GCC**CGATCGCC**

ATGGACTGCAGGACCAAGGCAAATCCAGACAGAACCTTTGACTTGGTGTGAAAGTGAAATGTCATGCCT
 CTGAAAATGAAGATCCTGTGGTATTGTGGAAATCCCAGAGACTTTGGAGACCAGGAAATACTACAGAG
 TGTGCCAAAGTTCTGTTTTCCCTTTGACGTTGAAAGGGTGTCTCAGAATCAAGTTGGACAGCACTTTACC
 TTTGACTGACAGACATTGAAAGTAAACAGAGATTTGGATTCTGCAGACTGACGTGAGGAGCACAATTT
 GTTTATGCATCCTTAGTTACCTCCCTGGTTTGAAGTGTATTACAAGCTTCTAAATACTCTTGAGATTA
 CTTGGCTAAGGAACTGAAAAATGATTTGAATGAACTCTCAGATCACTGTATAACCAACCCAGTACCAAAG
 GCAAATACTCCTGTAATTTGAGTGTGAACCAAGAGATATTTATGCCTGTGAGCAAGTTCTGAAAGATC
 AGCCTGCTCTAGTACCGCATTCTACTTCACTTCCCTGATGTAAGTGGACTCCCAACAATACCCGAGAG
 TAGAAATCTTACAGAATATTTTGTGCCGTGGATGTGAACAACATGCTGCAGCTGTATGCCAGTATGCTG
 CATGAAAGGCGCATCGTATTATCTCGAGCAAATTAAGCACTTTAACTGCCTGTATCCATGGATCAGCTG
 CTCTTCTATACCAATGTATTGGCAACACATATACATCCCAGTGTCTTCTCCACACCTGCTGGACTACTG
 CTGTGCCCAATGCCATACCTGATTGGAATACACTCCAGCCTCATAGAGAGAGTGAAAAACAATCATTG
 GAAGATGTTGTTATGTTAAATGTTGATACAAACACATTAGAATCACCATTTAGTGACTTGAACAACCTAC
 CAAGTGATGTGGTCTCGGCCTTGAATAAATACTGAAGAAGCAGTCTACAGCTACGGGTGATGGAGTAGC
 TAGGGCCTTTCTAGAGCACAGGCTGCTTTGTTGGATCCTACAGAGATGCACTGAGATACAAACCTGGT
 GAGCCCATCACTTTCTGTGAGGAGAGTTTTGTAAGCACCGCTCAAGCGTGTAAACAGTTCTGGAAGG
 CTGCCATTAACCTCCAGCTTTTTAAGCAGTTTTATCGATGGTGCAGTGGCAAACTAAATGCAGGAAGGGG
 TTTCTCTGATGTATTTGAAGAAGAGATCACTTCAGGTGGCTTTTGTGGAGGGAACCCGAGGTCATATCAA
 CAATGGGTGCATACAGTCAAGAAAGGAGGTGCACTGTTCAACACAGCAATGACCAAGCAACCCCTGCTG
 TACGGACAGCATATAATTTGCAAAAAATCATGCAAAGCTGGGACTAAAGGAAGTGAAGAGTAACTAAA
 ACACAAGGAAAAATGAAGAAGATTATGGGACCTGTTCTAGTTCTGTACAATATACACCAGTTTACAAATTA
 CACAATGAAAAGGGAGGAACTCAGAAAAGCGTAAGCTTGCTCAGGCACGCTTAAAAAGCCTCTTAAGA
 GCCTTGATGGTGTCTATATGATGATGAAGATGATGATGACATTGAAAGAGCAAGCAAGTTATCTTCTGA
 AGATGGTGAAGAAGCTTCTGCTTATCTCTATGAGAGTATGACTCTGTTGAAACAAGAGTGAAGACTCCT
 TACTCAGGTGAAATGGACTTACTAGGAGAGATTCTTGATACATTGAGCACACACAGCTCAGATCAGGGGA
 AGCTGGCAGCTGCAAAGAGCTTGGATTTCTTTAGATCAATGGATGACATTGATTACAAACCTACGAATAA
 ATCTAATGCTCCTAGTGAGAATAACCTGGCTTTCCTCTGTGGTGGTTCTGGTGACCAAGCAGAGTGGAAAT
 CTTGGGCAAGACGATAGTGCCCTCCATGGCAAACACCTCCCTCCATCTCCTAGGAAGCGGGTTTCTCTA
 GTGGTTTGACAGATTCTCTGTTTATCCTGAAAGAGGAAAAACAGTAACAAGCACCTCGGTGCTGACAAATG
 GAGTGACCCTACTTCAGGACTGGATTTCCAACCTCACTTCCCTGAAGTTTCCAGACTGATAAAGGAAAA
 ACAGAAAAGAGGGAAACACTAAGCCAGATTTAGATGATCTGCTTATACCCGGTCTTGGGCGGCATTTCAT
 CGACTTTTGTTCCTTGGGAGAAAAGGGAAAGCAAGCAAGAGACTTCAAGAATATTGGACTGCTCCA
 TGAAGTAGTGTCATTATGTCATATGACATCTGACTTCCAACAAAGCTTGAACATTTACAGACAAAAACACA
 AATGAAAACCAAAT

ACGCGTACGCGGCCGCTCGAG – GFP Tag – GTTTAA

Protein Sequence: >RG231411 representing NM_001195215
Red=Cloning site Green=Tags(s)

MDCRTKANPDRTFDLVLKVKCHASENEDPVVLWKFPEDFGDQEILQSVPKFCFPFDVERVSQNQVGGHFT
FVLTDIESKQRFQFCRLTSGGTICLCILSYLPWFVEVYKLLNLTADYLAKELENDLNETLRSLYNHPVPK
ANTPVNLSVNQEIFIACEQVLKQDPALVPHSYFIAPDVTGLPTIPESRNLTEYFVAVDVNNMLQLYASML
HERRIVIISSKSLTLTACIHGSAALLYPMYWQHIYIPVLPPhLLDYCCAPMPYLIGIHSSLIERVKNKSL
EDVVMLNVDNTLESPFSDLNLPDVSALKNKLLKQSTATGDGVARAFLRAQAALFGSYRDALRYKPG
EPITFCEESFVKHRSSVMKQFLETAINLQLFKQFIDGRLAKLNAGRGFSDVFEEETSGGFCGGNPRSYQ
QWVHTVKKGGALFNTAMTKATPAVRTAYKFAKNHAKLGLKEVSKLKHKENEEDYGTSSSVQYTPVYKL
HNEKGGNSEKRKLAQARLKRPLKSLDGALYDEDDDDIERASKLSEEDGEASAYLYESDDSVETRVKTP
YSGEMDLLGEILDTLSTHSSDQGLAAAKSLDFFRSMDDIDYKPTNKSNAPENNLAFLCGGSGDQAEWN
LGQDSDSALHGKHLPPSPRKRVS SGLTDSLFI LKEENS NKHLGADNVSDPTSGLDLDFQLTSPEVSQTDKGG
TEKRETL S QISDDL LIPGLGRHSSTFVPWEKEGKEAKETSEDIGLLHEVVS LCHMTSDFQQSLNISDKNT
NGNQ T

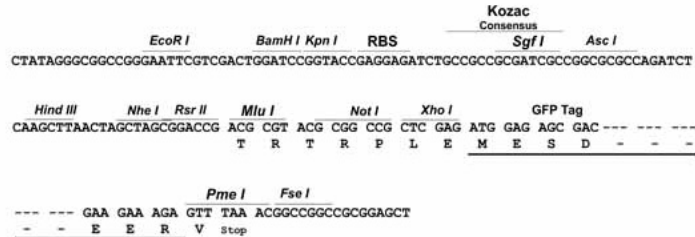
TRTRPLE - GFP Tag - V

Chromatograms: https://cdn.origene.com/chromatograms/ja2049_a05.zip

Restriction Sites: Sgfl-Mlul

Cloning Scheme:

Cloning sites used for ORF Shutting:



ACCN: NM_001195215

ORF Size: 2325 bp

OTI Disclaimer: The molecular sequence of this clone aligns with the gene accession number as a point of reference only. However, individual transcript sequences of the same gene can differ through naturally occurring variations (e.g. polymorphisms), each with its own valid existence. This clone is substantially in agreement with the reference, but a complete review of all prevailing variants is recommended prior to use. [More info](#)

OTI Annotation: This clone was engineered to express the complete ORF with an expression tag. Expression varies depending on the nature of the gene.

Components: The ORF clone is ion-exchange column purified and shipped in a 2D barcoded Matrix tube containing 10ug of transfection-ready, dried plasmid DNA (reconstitute with 100 ul of water).

Reconstitution Method:

1. Centrifuge at 5,000xg for 5min.
2. Carefully open the tube and add 100ul of sterile water to dissolve the DNA.
3. Close the tube and incubate for 10 minutes at room temperature.
4. Briefly vortex the tube and then do a quick spin (less than 5000xg) to concentrate the liquid at the bottom.
5. Store the suspended plasmid at -20°C. The DNA is stable for at least one year from date of shipping when stored at -20°C.

RefSeq: [NM_001195215.2](#)

RefSeq Size: 8388 bp

RefSeq ORF: 2328 bp

Locus ID: 163486

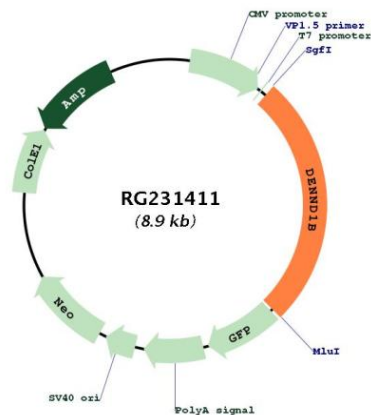
UniProt ID: [Q6P3S1](#)

Cytogenetics: 1q31.3

Protein Families: Transmembrane

Gene Summary: Clathrin (see MIM 118955)-mediated endocytosis is a major mechanism for internalization of proteins and lipids. Members of the connecdenn family, such as DENND1B, function as guanine nucleotide exchange factors (GEFs) for the early endosomal small GTPase RAB35 (MIM 604199) and bind to clathrin and clathrin adaptor protein-2 (AP2; see MIM 601024). Thus, connecdenns link RAB35 activation with the clathrin machinery (Marat and McPherson, 2010 [PubMed 20154091]).[supplied by OMIM, Nov 2010]

Product images:



Circular map for RG231411