

Product datasheet for **RG231410**

HIF1 beta (ARNT) (NM_001197325) Human Tagged ORF Clone

Product data:

Product Type:	Expression Plasmids
Product Name:	HIF1 beta (ARNT) (NM_001197325) Human Tagged ORF Clone
Tag:	TurboGFP
Symbol:	ARNT
Synonyms:	bHLHe2; HIF-1-beta; HIF-1beta; HIF1-beta; HIF1B; HIF1BETA; TANGO
Mammalian Cell Selection:	Neomycin
Vector:	pCMV6-AC-GFP (PS100010)
E. coli Selection:	Ampicillin (100 ug/mL)



[View online »](#)

ORF Nucleotide Sequence:

>RG231410 representing NM_001197325
 Red=Cloning site Blue=ORF Green=Tags(s)

TTTTGTAATACGACTCACTATAGGGCGGCCGGAATTCGTCGACTGGATCCGGTACCGAGGAGATCTGCC
 GCC**CGGATCGCC**

ATGGCGGCGACTACTGCCAACCCGAAATGACATCAGATGTACCATCACTGGGTCCAGCCATTGCCTCTG
 GAAACTCTGGACCTGGAATTC AAGGTGGAGGAGCCATTGTCCAGAGGGCTATTAAGCGGCCAGCAGGGCT
 GGATTTTGATGATGATGGAGAAGGGAACAGTAAATTTTTGAGGTGTGATGATGATCAGATGTCTAACGAT
 AAGGAGCGGTTTGCCAGGGAAAATCACAGTGAATTTGAACGGCGCGACGGAACAAGATGACAGCCTACA
 TCACAGAACTGTCAGATATGGTACCCACCTGTAGTGCCCTGGCTCGAAAACCAGACAAGTAACCATCTT
 ACGCATGGCAGTTTCTCACATGAAGTCTTGGGGGAACTGGCAACACATCCACTGATGGCTCCTATAAG
 CCGTCTTCTCACTGATCAGGAACTGAAACATTTGATCTTGAGGCAGCAGATGGCTTTCTGTTTATTG
 TCTCATGTGAGACAGGCAGGGTGGTGTATGTGTCTGACTCCGTGACTCCTGTTTTGAACCAGCCACAGTC
 TGATGGTTTGGCAGCACACTCTATGATCAGGTGCACCCAGATGATGTGGATAAACTTCGTGAGCAGCTT
 TCCACTTCAGAAAATGCCCTGACAGGGCGTATCCTGGATCTAAAGACTGGAACAGTGAAAAGGAAGGTC
 AGCAGTCTTCCATGAGAATGTGTATGGGCTCAAGGAGATCGTTTATTTGCCGAATGAGGTGTGGCAGTAG
 CTCTGTGGACCCAGTTTCTGTGAATAGGCTGAGCTTTGTGAGGAACAGATGCAGGAATGGACTTGGCTCT
 GTAAAGGATGGGGAACCTCACTTCGTGGTGGTCCACTGCACAGGCTACATCAAGGCTGGCCCCAGCAG
 GTGTTTCCCTCCCAGATGATGACCCAGAGGCTGGCCAGGGAAGCAAGTTTTGCCTAGTGGCCATTGGCAG
 ATTGACAGTAAGTCTTCCAACTGTACAGACATGAGTAATGTTTGTCAACCAACAGAGTTTCACTCC
 CGACACAACATTGAGGGTATCTTCACTTTGTGGATCACCGCTGTGTGGCTACTGTTGGTACCAGCCAC
 AGGAACCTTAGGAAAGAATATTGTAGAATCTGTCATCCTGAAGACCAGCAGCTTCTAAGAGACAGCTT
 CCAACAGGTAGTGAAATTAAGGCAAGTGTCTGTCTGTCATGTTCCGGTTCCGGTCTAAGAACCAAGAA
 TGGCTCTGGATGAGAACCAGCTCCTTTACTTTCCAGAACCCTTACTCAGATGAAATTTGAGTACATCATCT
 GTACCAACACCAATGTGAAGAACTTAGCCAAGAACCACGGCCTACACTCTCAACACAATCCAGAGGCC
 ACAACTAGGTCCCACAGCTAATTTACCCCTGGAGATGGGCTCAGGACAGCTGGCACCCAGGCAGCAGCAA
 CAGCAAACAGAATTGGACATGGTACCAGGAAGAGATGGACTGGCCAGCTACAATCATTCCCAGGTGGTTC
 AGCCTGTGACAACCACAGGACCAGAACACAGCAAGCCCTTGAGAAGTCAGATGGTTTATTTGCCAGGA
 TAGAGATCCAAGATTTTCAGAAATCTATCACAACTCAATGCGGATCAGAGTAAAGGCATCTCCTCCAGC
 ACTGTCCCTGCCACCAACAGCTATTCTCCAGGGCAACACATTCCTCCTACCCCCCGCCGGCAGAGA
 ATTTCAGGAATAGTGGCCTAGCCCTCCTGTAACCATTGTCCAGCCATCAGCTTCTGCAGGACAGATGTT
 GGCCAGATTTCCCGCCACTCCAACCCACCAAGGAGCAACCCCAACTTGGACCCCTACTACCCGCTCA
 GGCTTTTCTGCCAGGTGGTACCAGGCTACTGCTAAGACTCGTACTTCCCAGTTTGGTGTGGGAGCT
 TTCAGACTCCAATCCTCCTCAGCTCCATGTCCCTCCCTGGTGCCCAACTGCATCGCCTGGTGTCTGCTG
 CTACCCTAGTCTACCAATCGTGGATCTAATTTGCTCCTGAGACTGGACAGACTGCAGGACAATCCAG
 ACACGGACAGCAGAGGGTGTGGGTGTCTGGCCACAGTGGCAGGGCCAGCAGCCTCATCATCGTTCAAGTT
 CTAGTGAGCAACATGTTCAACAACCGCCAGCACAGCAACCTGGCCAGCCTGAGGTCTTCCAGGAGATGCT
 GTCCATGCTGGGAGATCAGAGCAACAGCTACAACAATGAAGAATCCCTGATCTAACTATGTTTCCCCC
 TTTTCAGAA

ACGCGTACGCGGCCGCTCGAG – GFP Tag – GTTTAA

Protein Sequence: >RG231410 representing NM_001197325
 Red=Cloning site Green=Tags(s)

```

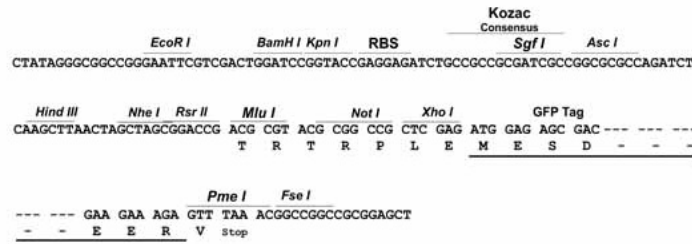
MAATTANPEMTSDVPSLGPATIASGNSGPGIQGGGAI VQRAIKRRPGLDFDDDGEGNSKFLRCDDQMSND
KERFARENHSEIERRRRNKMTAYITELSDMVPTCSALARKPKL TILRMAVSHMKSLRGTGNTSTDGSYK
PSFLTDQELKHLILEAADGFLFIVSCETGRVVYVSDSVTPVLNQPSQSEWFGSTLYDQVHPDDVDKLRQL
STSENAL TGRILD LKTGTVKKEGQQSSMRMCMGSRRSFICRMRCGSSSDVPVSVNRLSFVRNRCRNLGSL
VKDGEPHFVVVHCTGYIKAWPPAGVSLPDDDEAGQGSKFCLVAIGRLQVTSSPNCTDMSNVCQPTTEFIS
RHNIIEGIFTFVDHRCVATVGYQPQELLGKNIVEFCHPEDQQLLRDSFQQVVKLKGQVLSVMFRFRSKNQE
WLMWRTSSFTFQNPYSDEIEYIICTNTNVKNSSQEPRTLNTIQRPLGPTANLPLEMGSGQLAPRQQQ
QQTELDMPGRDGLASYNHSQVVQPVTGPEHSKPLEKSDGLFAQDRDPRFSEIYHNINADQSKGISSS
TVPATQQLFSQGNTPPTPRPAENFRNSGLAPPVTIVQPSASAGQMLAQISRHSNPTQGATPTWPTTRS
GFSAQVATQATAKTRTSQFVGVSFQTPSSFSSMSLPGAPTASPGAAAAYPSLTNRGSNFAPETGQTAGQFQ
TRTAEGVGVPWQWQGGQPPHRRSSSEQHVQPPAQPGQPEVFQEMLSMLGDQSNSYNNEEFPDLTMFPP
FSE
  
```

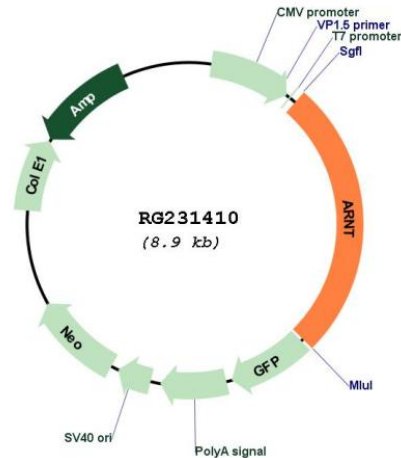
TRTRPLE - GFP Tag - V

Restriction Sites: SgfI-MluI

Cloning Scheme:

Cloning sites used for ORF Shuttling:



Plasmid Map:


ACCN: NM_001197325

ORF Size: 2319 bp

OTI Disclaimer: The molecular sequence of this clone aligns with the gene accession number as a point of reference only. However, individual transcript sequences of the same gene can differ through naturally occurring variations (e.g. polymorphisms), each with its own valid existence. This clone is substantially in agreement with the reference, but a complete review of all prevailing variants is recommended prior to use. [More info](#)

OTI Annotation: This clone was engineered to express the complete ORF with an expression tag. Expression varies depending on the nature of the gene.

Components: The ORF clone is ion-exchange column purified and shipped in a 2D barcoded Matrix tube containing 10ug of transfection-ready, dried plasmid DNA (reconstitute with 100 ul of water).

Reconstitution Method:

1. Centrifuge at 5,000xg for 5min.
2. Carefully open the tube and add 100ul of sterile water to dissolve the DNA.
3. Close the tube and incubate for 10 minutes at room temperature.
4. Briefly vortex the tube and then do a quick spin (less than 5000xg) to concentrate the liquid at the bottom.
5. Store the suspended plasmid at -20°C. The DNA is stable for at least one year from date of shipping when stored at -20°C.

RefSeq: [NM_001197325.2](#)

RefSeq Size: 4855 bp

RefSeq ORF: 2322 bp

Locus ID: 405

UniProt ID: [P27540](#)

Cytogenetics: 1q21.3

Protein Families: Druggable Genome, Transcription Factors

Protein Pathways: Pathways in cancer, Renal cell carcinoma

Gene Summary: This gene encodes a protein containing a basic helix-loop-helix domain and two characteristic PAS domains along with a PAC domain. The encoded protein binds to ligand-bound aryl hydrocarbon receptor and aids in the movement of this complex to the nucleus, where it promotes the expression of genes involved in xenobiotic metabolism. This protein is also a co-factor for transcriptional regulation by hypoxia-inducible factor 1. Chromosomal translocation of this locus with the ETV6 (ets variant 6) gene on chromosome 12 have been described in leukemias. Alternative splicing results in multiple transcript variants. [provided by RefSeq, Oct 2013]