

Product datasheet for **RG231408**

PDE1C (NM_001191058) Human Tagged ORF Clone

Product data:

Product Type:	Expression Plasmids
Product Name:	PDE1C (NM_001191058) Human Tagged ORF Clone
Tag:	TurboGFP
Symbol:	PDE1C
Synonyms:	cam-PDE 1C; DFNA74; hCam-3; Hcam3
Mammalian Cell Selection:	Neomycin
Vector:	pCMV6-AC-GFP (PS100010)
E. coli Selection:	Ampicillin (100 ug/mL)



[View online »](#)

ORF Nucleotide
Sequence:

>RG231408 representing NM_001191058
Red=Cloning site Blue=ORF Green=Tags(s)

TTTTGTAATACGACTCACTATAGGGCGGCCGGAATTCGTCGACTGGATCCGGTACCGAGGAGATCTGCC
GCCGCGATCGCC

ATGACGGACGCCGCAACAGGAAGGAGGGCTTCAAAAAATGCCGGAGCGCCACTTTCAGCATCGATGGCT
ACAGCTTCACCATAGTTGCAAATGAAGCTGGAGACAAGAATGCCAGACCACTGGCCCGCTTCTCTCGGT
TAAGTCACAGAAGTGTCTGTGGAACCTCCCTCATCGATGGGCTCACAGGAATGTCAAGGAGAAGCCAAGG
CCAACAATTGTCCATGACCCTCGACCCAGAGGAGATCCTAGCTGATGAATTGCCACAGCTGGATAGCT
CAGAAGCTTTGGTGAAGACATCCTTCAGATTACGGTCTTTGGTCAACAATTAGAGAGAGGGGAAGCTTC
AGTGGTAGATCTAAGAAGAATTTGGAATATGCAGCCACAGTGCCTGAATCTGTGTATATTGATGAAACA
AGGAGACTCCTGGATACAGAGGATGAGCTCAGTGACATTCAGTCAGATGCTGTGCCTTCTGAGGTCGGAG
ACTGGCTGGCCTCCACCTTCACGCGCAGATGGGGATGATGCTCAGGAGGAGCGACGAGAAGCCCCGGTT
CAAGAGCATCGTTCACGCAGTGCAGGCTGGGATATTTGTGGAGAGAATGTATAGACGGACATCAAACATG
GTTGGACTGAGCTATCCACCAGCTGTTATTGAGGCATTAAGGATGTGGACAAGTGGTCTTTGACGTCT
TTCCCTCAATGAGGCCAGTGGGATCATGCACTGAAATTTATTTCTATGAACTACTCACACGTTATGA
TCTGATCAGCCGTTTCAAGATCCCCATTTCTGCACTTGTCTCATTGTGGAGGCCCTGGAAGTGGGATAC
AGCAAGCACAAAAATCCTTACCATAACTTAATGCACGCTGCCGATGTTACACAGACAGTGCATTACCTCC
TCTATAAGACAGGAGTGGCGAAGTGGCTGACGGAGCTGGAGATCTTTGCTATAATCTTCTCAGTGCCAT
CCATGACTACGAGCATACCGGAACCACCAACAATTTCCACATTCAGACTCGGTCTGATCCAGCTATTCTG
TATAATGACAGATCTGTACTGGAGAATCACCATTTAAGTGCAGCTTATCGCCTTCTGCAAGATGACGAGG
AAATGAATTTTTGATTAACCTCTCAAAGGATGACTGGAGGGAGTTTCGAACCTTGGTAAATGAAATGGT
GATGGCCACAGATATGTCTTGTCACTTCCAACAATCAAAGCAATGAAGACTGCTCTGCAGCAGCCAGAA
GCCATTGAAAAGCAAAAGCCTTATCCCTTATGCTGCATACAGCAGATATTAGCCATCCAGCAAAAAGCAT
GGGACCTCCATCATCGCTGGACAATGCACTCCTGGAGGAGTTCTTACAGCAGGGTGACAGAGAAGCAGA
GCTGGGGCTGCCTTTTTCTCTGTGTGACCGAAAGTCCACTATGGTTGCTCAGTCACAAGTAGGTTTC
ATTGATTCATCGTGAACCCACCTTCACTGTGCTTACGGACATGACCGAGAAGATTGTGAGTCCATTAA
TCGATGAAACCTCTCAAAGTGGTGGACAGGACAGAGGCGTTTCGAGTTTGAATAGCATCAGCTCGTCAGA
TGCCAAGCGATCAGGTGTCAAGACCTCTGGTTCAGAGGGAAGTGCCTCGATCAACAATTCTGTCATCTCC
GTTGACTATAAGAGCTTTAAAGCTACTTGGACGGAAGTGGTGCACATCAATCGGGAGAGATGGAGGGCCA
AGGTACCCAAAGAGGAGAAGGCCAAGAAGGAAGCAGAGGAAAAGGCTCGCCTGGCCGACAGGAGAGCA
AAAGGAAATGGAAGCCAAAAGCCAGGCTGAAGAAGGCGCATCTGGCAAAGCTGAGAAAAAGCAGTCTGGA
GAAACTAAGAATCAAGTCAATGGAACACGGGCAAAACAAAAGTACAACCTCGTGGGAAAAACTCCAAAG
CCGAGAAGTCAACAGGAGAACAGCAACAGAATGGTACTTCAAAGATGGTAAAAATAAGACAGACAAGAA
GGATCACTCTAACATCGGAAATGATTCAAAGAAAAACAGATGGCACAAAACAGCGTTCTCACGGCTCACCA
GCCCAAGCACCAGCTCCACGTGTCGCTTACGTTGCCAGTCATCAAGCCTCCTTTGCGTCATTTTAAAC
GCCCTGCTTACGCATCTAGCTCCTATGCACCTTCAGTCTCAAAGAAAAGTATGATGAGCATCCTGCAAGGTA
CAAGATGCTGGATCAGAGGATCAAAATGAAAAGATTGAGAATCTCACATAACTGGAACAGAAAA

ACGCGTACGCGGCCGCTCGAG - GFP Tag - GTTTAA

Protein Sequence: >RG231408 representing NM_001191058
 Red=Cloning site Green=Tags(s)

MTDAGNRKEGFKKCRSATFSIDGYSFTIVANEAGDKNARPLARFSRSKSNCLWNSLIDGLTGNVKEKPR
 PTIVHDPRPPEEILADELPQLDSSEVLVKTFSFRLRSLVKQLERGEASVVDLKKNLEYAATVLESVIDET
 RRLDDEDELSDIQSDAVPSEVRDLASTFTRQMGMLRRSDEKPRFKSIVHAVQAGIFVERMYRRTSNM
 VGLSYPPAVIEALKDVKWSFDVFSLNEASGDHALKFIFYELLTRYDLISRFKIPISALVSFVEALEVGY
 SKHKNPYHNLMAADVTQTVHYLLYKTGVANWLTELEIFAIIFSAAIHDYEHTGTTNNFHIQTRSDPAIL
 YNDRSVLENHHL SAAYRLLQDDEMNILINL SKDDWREFRTLVIEMMATDMSCHFQQIKAMKTALQQPE
 AIEKPKALSLMLHTADISHPAKAWDLHHRWTMSLLEEFFRQGDREAELGLPFSPLCDRKSTMVAQSQVGF
 IDFIVEPTFTVL TDMTEKIVSPL IDETSQTGGTGQRRSSLNSISSDAKRSGVKTSGSEGSAPINNSVIS
 VDYKSFKATWTEVVHINRERWRKVPKEEKAKKEAEKARLAAEEQQKEMEAKSQAEEGASGKAEEKTSG
 ETKNQVNGTRANKSDNPRGKNSKAEKSSGEQQQNGDFKDGKNKTDKDHNSNIGNDSKKTDTGKQRSHGSP
 APSTSSTCRLTLPVIKPLRHFKRPAAYASSYAPSVSKTDEHPARYKMLDQRIKMKKIQNI SHNWNRK

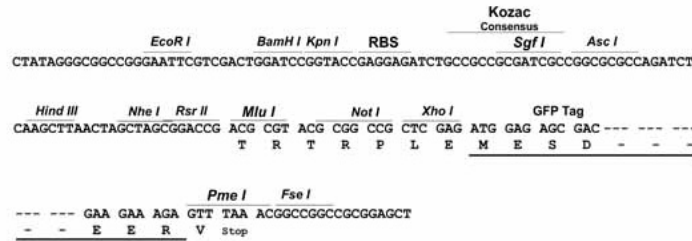
TRTRPLE - GFP Tag - V

Restriction Sites:

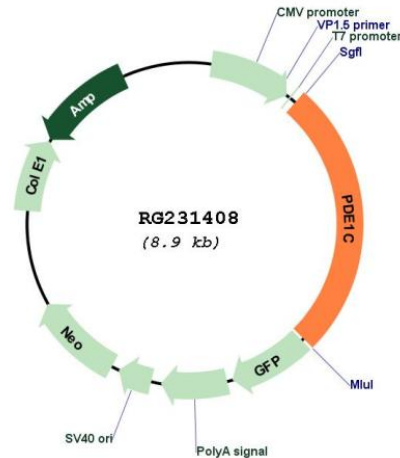
SgfI-MluI

Cloning Scheme:

Cloning sites used for ORF Shutting:



Plasmid Map:



ACCN: NM_001191058

ORF Size: 2307 bp

OTI Disclaimer: The molecular sequence of this clone aligns with the gene accession number as a point of reference only. However, individual transcript sequences of the same gene can differ through naturally occurring variations (e.g. polymorphisms), each with its own valid existence. This clone is substantially in agreement with the reference, but a complete review of all prevailing variants is recommended prior to use. [More info](#)

OTI Annotation: This clone was engineered to express the complete ORF with an expression tag. Expression varies depending on the nature of the gene.

Components: The ORF clone is ion-exchange column purified and shipped in a 2D barcoded Matrix tube containing 10ug of transfection-ready, dried plasmid DNA (reconstitute with 100 ul of water).

Reconstitution Method:

1. Centrifuge at 5,000xg for 5min.
2. Carefully open the tube and add 100ul of sterile water to dissolve the DNA.
3. Close the tube and incubate for 10 minutes at room temperature.
4. Briefly vortex the tube and then do a quick spin (less than 5000xg) to concentrate the liquid at the bottom.
5. Store the suspended plasmid at -20°C. The DNA is stable for at least one year from date of shipping when stored at -20°C.

RefSeq: [NM_001191058.1](#), [NP_001177987.1](#)

RefSeq Size: 2712 bp

RefSeq ORF: 2310 bp

Locus ID: 5137

UniProt ID: [Q14123](#)

Cytogenetics: 7p14.3

Protein Families: Druggable Genome

Protein Pathways: Calcium signaling pathway, Olfactory transduction, Progesterone-mediated oocyte maturation, Purine metabolism

Gene Summary: This gene encodes an enzyme that belongs to the 3'5'-cyclic nucleotide phosphodiesterase family. Members of this family catalyze hydrolysis of the cyclic nucleotides, cyclic adenosine monophosphate and cyclic guanosine monophosphate, to the corresponding nucleoside 5'-monophosphates. The enzyme encoded by this gene regulates proliferation and migration of vascular smooth muscle cells, and neointimal hyperplasia. This enzyme also plays a role in pathological vascular remodeling by regulating the stability of growth factor receptors, such as PDGF-receptor-beta. [provided by RefSeq, Jul 2016]