

## Product datasheet for **RG231403**

### Cullin 2 (CUL2) (NM\_001198779) Human Tagged ORF Clone

#### Product data:

Product Type:	Expression Plasmids
Product Name:	Cullin 2 (CUL2) (NM_001198779) Human Tagged ORF Clone
Tag:	TurboGFP
Symbol:	CUL2
Mammalian Cell Selection:	Neomycin
Vector:	pCMV6-AC-GFP (PS100010)
E. coli Selection:	Ampicillin (100 ug/mL)



[View online »](#)

ORF Nucleotide  
Sequence:

>RG231403 representing NM\_001198779  
Red=Cloning site Blue=ORF Green=Tags(s)

TTTTGTAATACGACTCACTATAGGGCGGCCGGAATTCGTCGACTGGATCCGGTACCGAGGAGATCTGCC  
GCC**CGGATCGCC**

ATGGTGCCTGGCAAGGAATTTCAACACTACACTTGCACAATGTCTTTGAAACCAAGAGTAGTAGATTTTG  
ATGAAACATGGAACAACTTTTGACGACAATAAAAGCCGTGGTCATGTTGGAATACGTCGAAAGAGCAAC  
ATGGAATGACCGTTTCTCAGATATCTATGCTTTATGTGTGGCCTATCCTGAACCCCTGGAGAAAGACTT  
TATACAGAACTAAGATTTTTTTGGAAAATCATGTTTCGGCATTTCGATAAGAGAGTTTTGGAGTCAGAAG  
AACAACTACTTGTATGTATCATAGGACTGGGAAGAATACAGCAAGGGTGCAGACTATATGGACTGCTT  
ATATAGGTATCTCAACACCCAGTTTATTAAGAAATAAATTAACAGAAGCGGACCTTCAGTATGGCTAT  
GGTGGTGTAGATATGAATGAACCACTTATGAAAATAGGAGAGCTAGCATTGGATATGTGGAGGAAATTGA  
TGGTTGAACCACTTCAGGCCATCCTTATCCGAATGCTGCTCCGAGAAATCAAAAATGATCGTGGTGGAGA  
AGACCCAAACCAGAAAGTAATCCATGGGGTTATTAAGTCTTTGTTTCATGTTGAACAGTATAAGAAAAA  
TTCCCTTAAAGTTTTATCAGGAAATTTTTGAGTCTCCCTTTCTGACTGAAACAGGAGAGATTACAAC  
AAGAAGCTTCAAATTTATTACAAGAATCAAAGTCTCACAGTATATGGAAAAGGTTCTAGGTAGATTA  
AGATGAAGAAATTCGATGTCGAAAATACCTACATCCAAGTTCATATACTAAGGTGATTTCATGAATGTCAA  
CAACGAATGGTAGCAGACCACCTTACAGTTTTTACATGCAGAAATGCATAATATAATTCGACAAGAGAAAA  
AAAATGACATGGCAAATATGTACGTCCTACTCCGTGCTGTGTCCACTGGTTTACCTCATATGATTCAGGA  
GCTGCAAAACCACATCCATGATGAGGGCCTTCGAGCAACCAGCAACCTTACTCAGGAAAACATGCCAACA  
CTATTTGTGGAGTCAGTTTTGGAAGTGCATGGTAAATTTGTTTCAGCTTATCAACACTGTTTTGAATGGTG  
ATCAGCATTTTTATGAGTGCCTGGATAAGGCCCTTACGTCAGTTGTAATTAACAGAGAACCCTAAGTCTGT  
TTGCAAAGCACCTGAACCTGCTTAAGTACTGTGACAACCTTACTGAAGAAGTCAGCGAAAAGGGATGACA  
GAGAATGAAGTGAAGACAGGCTCACGAGCTTCATCACAGTGTTCAAATACATTGATGACAAGGACGTCT  
TTCAAAGTTCTACGCAAGAATGCTGGCAAAACGTTTAAATTCATGGGTTATCCATGTCTATGGACTCTGA  
AGAAGCCATGATCAACAAATTAAGCAAGCCTGTGGTTATGAGTTTACCAGCAAGCTACATCGGATGTAT  
ACAGATATGAGTGTACGCGCTGATCTCAACAATAAGTTCAACAATTTTATCAAAAACCAAGACACAGTAA  
TAGATTTGGGAATTAGTTTTCAATATATGTTCTACAGGCTGGTGCCTGGCCTTACTCAGGCTCCTTC  
ATCTACGTTTGAATTTCCCAAGGAAATAGAAAAAGTGTACAGATGTTTGAATTTTATAGCCAACAT  
TTCAGTGAAGGAACTTACATGGTTACATTATCTGTGTACAGGTGAAGTTAAATGAACATTTTGGGCA  
AACCATATGTAGCCATGTTTACAACATACCAAATGGCAGTTCTTCTTGCCTTAAACAACAGTGAAACTGT  
CAGTTATAAAGAGCTTCAGGACAGCACTCAGATGAATGAAAAGGAACTGACAAAAACAATCAAATCATT  
CTTGATGTGAAAATGATTAACCATGATTCAGAAAAGGAAGATTTGATGCAGAACTCTTCTGTTTTTCATTAA  
ATATGAACTTTAGCAGTAAAAGAACAAAATTTAAATTAATCAATCAATGCAGAAAGACACACCACAAGA  
AATGGAGCAGACTAGAAGTGCAGTTGATGAGGACCGGAAAATGTATCTCCAAGCTGCTATAGTTCGTATC  
ATGAAAGCACGAAAAGTCTTCGGCACAATGCCCTTATTAAGAGGTGATTAGCCAGTCAAGAGCTAGGT  
TTAATCCAGTATCAGCATGATTAAGAAGTGTATTGAAGTCTGTAGACAAACAATACATAGAACGCGAG  
CCAGGCGTCGGCAGATGAATACAGCTACGTCGCG

**ACGCGT**ACGCGGCCGCTCGAG – GFP Tag – GTTTAA

**Protein Sequence:** >RG231403 representing NM\_001198779  
 Red=Cloning site Green=Tags(s)

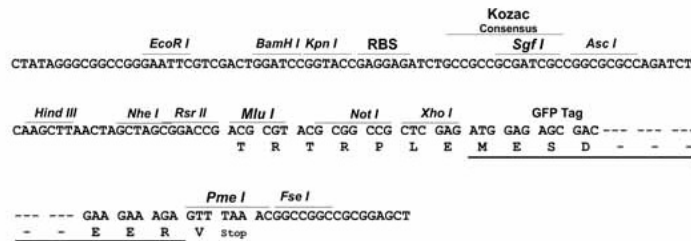
MVPGKEFQHYTCTMSLKPRVDFDETWNKLLTTIKAVVMLEYVERATWDRFSDIYALCVAYPEPLGERL  
 YTETKIFLENHVRHLHKRVLESEEQVLV MYHRYWEEYSKGADYMDCLYRYLNTQF IKKNKLEADLQYGY  
 GGVDMNEPLMEIGELALDMWRKLMVEPLQAAILRMLLREIKNDRGGEDPNQKVIHGVINSFVHVEQYKKK  
 FPLKFYQEIFESPFLTETGEYKQEASNLLQESNCSQYMEKVLGRLKDEEIRCRKYLHPSSYTKVIHECQ  
 QRMVADHLQFLHAECHNIIRQEKKNDMANMYVLLRAVSTGLPHMIQELQNHIDEGLRATSNLTQENMPT  
 LFVESVLEVHGKQVQLINTVLNGDQHFMSALDKALTSVVNYREP KSVCKAPELLAKYCDNLLKKSAGMT  
 ENEVEDRLTSFITVFKYIDDKDVFQKFYARMLAKRLIHGLSMSMDSEEAMINKLKQACGYEFTSKLHRMY  
 TDMSVSADLNNKFNNFIKNQDVTIDLGISFQIYVLQAGAWPLTQAPSSTFAIPQELEKSVQMFEFYSQH  
 FSGRKLTLWHLCTGEVKMNYLGKPYVAMVTTYQMAVLLAFNNSSETVSYKELQDSTQMNEKELTKTIKSL  
 LDVKMINHDSEKEDIDAESSFSLNMFSSKRTKFKITTSMQKDTPOEMEQTSAVDEDRKMYLQAAIVRI  
 MKARKVLRHNALIQEVISQSRARFNPSISMIKKCIEVLIDKQYIERSQASADEYSYVA

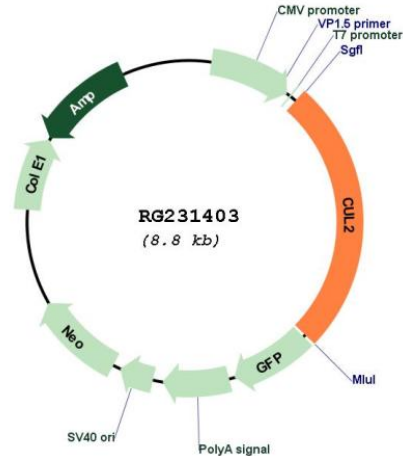
TRTRPLE - GFP Tag - V

**Restriction Sites:** SgfI-MluI

**Cloning Scheme:**

Cloning sites used for ORF Shutting:



**Plasmid Map:**


**ACCN:** NM\_001198779

**ORF Size:** 2274 bp

**OTI Disclaimer:** The molecular sequence of this clone aligns with the gene accession number as a point of reference only. However, individual transcript sequences of the same gene can differ through naturally occurring variations (e.g. polymorphisms), each with its own valid existence. This clone is substantially in agreement with the reference, but a complete review of all prevailing variants is recommended prior to use. [More info](#)

**OTI Annotation:** This clone was engineered to express the complete ORF with an expression tag. Expression varies depending on the nature of the gene.

**Components:** The ORF clone is ion-exchange column purified and shipped in a 2D barcoded Matrix tube containing 10ug of transfection-ready, dried plasmid DNA (reconstitute with 100 ul of water).

**Reconstitution Method:**

1. Centrifuge at 5,000xg for 5min.
2. Carefully open the tube and add 100ul of sterile water to dissolve the DNA.
3. Close the tube and incubate for 10 minutes at room temperature.
4. Briefly vortex the tube and then do a quick spin (less than 5000xg) to concentrate the liquid at the bottom.
5. Store the suspended plasmid at -20°C. The DNA is stable for at least one year from date of shipping when stored at -20°C.

**RefSeq:** [NM\\_001198779.1](#), [NP\\_001185708.1](#)

**RefSeq Size:** 4285 bp

**RefSeq ORF:** 2277 bp

<b>Locus ID:</b>	8453
<b>UniProt ID:</b>	<a href="#">Q13617</a>
<b>Cytogenetics:</b>	10p11.21
<b>Protein Families:</b>	Druggable Genome
<b>Protein Pathways:</b>	Pathways in cancer, Renal cell carcinoma, Ubiquitin mediated proteolysis
<b>Gene Summary:</b>	Core component of multiple cullin-RING-based ECS (ElonginB/C-CUL2/5-SOCS-box protein) E3 ubiquitin-protein ligase complexes, which mediate the ubiquitination of target proteins. ECS complexes and ARIH1 collaborate in tandem to mediate ubiquitination of target proteins (PubMed:27565346). May serve as a rigid scaffold in the complex and may contribute to catalysis through positioning of the substrate and the ubiquitin-conjugating enzyme. The E3 ubiquitin-protein ligase activity of the complex is dependent on the neddylation of the cullin subunit and is inhibited by the association of the deneddylated cullin subunit with TIP120A/CAND1. The functional specificity of the ECS complex depends on the substrate recognition component. ECS(VHL) mediates the ubiquitination of hypoxia-inducible factor (HIF).[UniProtKB/Swiss-Prot Function]