

Product datasheet for **RG231385**

STRA6 (NM_001199042) Human Tagged ORF Clone

Product data:

Product Type:	Expression Plasmids
Product Name:	STRA6 (NM_001199042) Human Tagged ORF Clone
Tag:	TurboGFP
Symbol:	STRA6
Synonyms:	MCOPCB8; MCOPS9; PP14296
Mammalian Cell Selection:	Neomycin
Vector:	pCMV6-AC-GFP (PS100010)
E. coli Selection:	Ampicillin (100 ug/mL)



[View online »](#)

ORF Nucleotide Sequence:

>RG231385 representing NM_001199042
 Red=Cloning site Blue=ORF Green=Tags(s)

TTTTGTAATACGACTCACTATAGGGCGGCCGGGAATTCGTCGACTGGATCCGGTACCGAGGAGATCTGCC
 GCC**CGATCGCC**

ATGGGCGGAAGGGAGGAGGGGACACGAGAGGCCCTGTCTCTTCCCGTGCCAGCTTGCTCAGGCCCTCA
 GTCCCAGACGGGCTTTTCCAGAGAGCTAAAAGAGAAGGGCCAGAGAATGTCGTCCCAGCCAGCAGGGAA
 CCAGACCTCCCCGGGGCCACAGAGGACTACTCTATGGCAGCTGGTACATCGATGAGCCCCAGGGGGC
 GAGGAGCTCCAGCCAGAGGGGAAGTGCCTCCTGCCACACCAGCATACCACCGGCTGTACCACGCCCT
 GCCTGGCTCGTGTCAATCCTTGTGCTGCTGCTCCTGGCCATGCTGGTGAAGCGCCGACGCTCTGGCC
 TGACTGTGTGCGTGGCAGGCCCGGCTGCCAGCCCTGTGGATTCTTGGCTGGGACAGGCCCGGGCA
 GTGCTGCTGCTGTTTTATGGTCTCCTGAGCTCCCTGTGTTTGTGCTCCCCGACGAGGACGCATTGC
 CCTTCTGACTCTCGCTCAGCACCCAGCAAGATGGGAAAAGTGGGCTCCAAGAGGGGCTGGAAGAT
 ACTGGGACTGTTCTATTATGCTGCCCTTACTACCTCTGGCTGCCTGTGCCACGGCTGGCCACACAGCT
 GCACACCTGCTCGCAGCACGCTGCTCCTGGGCCACCTTGGGGTCCAGGTCTGGCAGAGGGCAGAGTGT
 CCCAGGTGCCAAGATCTACAAGTACTACTCCCTGCTGGCCTCCCTGCCTCTCCTGCTGGCCCTCGGATT
 CCTGAGCCTTTGGTACCCTGTGCAGCTGGTGAGAAGCTTCAGCCGTAGGACAGGAGCAGGCTCCAAGGGG
 CTGCAGAGCAGCTACTCTGAGGAATATCTGAGGAACCTCCTTTCAGGAAGAAGCTGGGAAGCAGCTACC
 ACACCTCCAAGCATGGCTTCTGTCTGGGCGCGCTGCTTGGAGACTGCATCTACACTCCACAGCC
 AGGATTCATCTCCCGCTGAAGCTGGTGTCTTTCAGCTACACTGACAGGGACGGCCATTTACCAGGTGGCC
 CTGCTGCTGCTGGTGGGCGTGGTACCCACTATCCAGAAGGTGAGGGCAGGGGTACCACGGATGTCTCCT
 TCTGTGGGCTCTGGAAGTGTGCTACATCTCAGCCTTGGTCTTGTCTGCTTACTCACCTTCTGGTCTG
 ATGCGCTCACTGGTGACACACAGGACCAACCTTCGAGCTCTGCACCGAGGAGCTGCCCTGGACTTGAGTC
 CCTTGCATCGGAGTCCCCATCCCTCCCGCAAGCCATATTCTGTTGGATGAGCTTCAGTGCTACCAGAC
 AGCCTTTATCTGCCTTGGGCTCCTGGTGCAGCAGATCATCTTCTTCTGGGAACCACGGCCCTGGCCTT
 CTGGTGCATGCCTGTGCTCCATGGCAGGAACCTCCTGCTTCCGTTCCCTGGAGTCTCGTGGCCCT
 TCTGGCTGACTTTGGCCCTGGCTGTGATCCTGCAGAACATGGCAGCCATTGGGTCTTCTGGAGACTCA
 TGATGGACACCCACAGCTGACCAACCGGCGAGTGTCTATGCAGCCACCTTCTTCTTCCCCCTCAAT
 GTGCTGGTGGGTGCCATGGTGGCCACCTGGCGAGTGTCTCTCTGCCCTTACAAGCCATCCACCTTG
 GCCAGATGGACCTCAGCCTGCTGCCACCGAGAGCCGCACTCTCGACCCCGGCTACTACAGTACCGAAA
 TTCTTGAAGATTGAAGTCAGCCAGTCGCATCCAGCCATGACAGCCTTCTGCTCCCTGCTCCTGCAAGCG
 CAGAGCCTCTACCCAGGACCATGGCAGCCCCCAGGACGCCTCAGACCAGGGGAGGAAGCAAGGGGA
 TGCAGTGTCTACAGACAAAGGACTCCAATGGCCAAGGGAGCTAGGCCCGGGGCCAGCCGGCAGGGCTCG
 CTGGGTCTGGCCTACACGCTGCTGCACAACCAACCTGCAGGTCTTCCGCAAGACGGCCCTGTTGGGT
 GCCAATGGTGCCAGCCC

ACGCGTACGCGGCCGCTCGAG – GFP Tag – GTTTAA

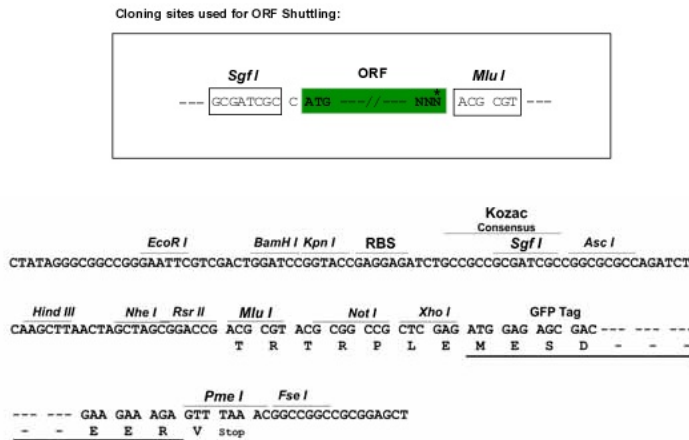
Protein Sequence: >RG231385 representing NM_001199042
Red=Cloning site Green=Tags(s)

```
MGGKGGGDTRGPVLFPCQLAQUALSPRRAFPRELKEKGQRMSSQPAGNQTSPGATEDYSYGSWYIDEPQGG
EELQPEGEVPSCHTSIPPGLYHACLASLSILVLLLLLAMLVRRRQLWPDCVRGRPLPSPVDFLAGDRPRA
VPAAVFMVLLSSLCLLLPDEDALPFLTLASAPSDQKGTEAPRGAWKILGLFYAAALYYPLAACATAGHTA
AHLLGSTLSWAHLGVQVWQRAECPQVPKIYKYYSLLASLPLLLGLGFLSLWYPVQLVRSFSRRTGAGSKG
LQSSYSEEYLRNLLCRKKLGSSYHTSKHGFLSWARVCLRHCIYTPQPGFHLPLKLVLSATLTGTAIYQVA
LLLLVGVVPTIQKVRAGVTTDVSYLLAGFGIVLSEDKQEVVELVKHHLWALEVCYISALVLSCLLTFLVL
MRSLVTHRTNLRALHRGAALDLSPLHRSPHPSRQAIFCWMSFSAYQTAFICLGLLVQQIIFFLGTALAF
LVLMVPLHGRNLLLFRSLESSWPFWLTLALAVILQNMAAHWVLETHDGHPQLTNRRLVYAATFLFPLN
VLVGAMVATWRVLLSALYNAIHLQMDLSLLPPRAATLDPGYTYRNFLEKIEVQSHPAMTAFCSLLLQA
QSLLPRTMAAPQDSL R P G E E D E G M Q L L Q T K D S M A K G A R P G A S R G R A R W G L A Y T L L H N P T L Q V F R K T A L L G
ANGAQP
```

TRTRPLE - GFP Tag - V

Restriction Sites: SgfI-MluI

Cloning Scheme:



ACCN: NM_001199042

ORF Size: 2118 bp

OTI Disclaimer: The molecular sequence of this clone aligns with the gene accession number as a point of reference only. However, individual transcript sequences of the same gene can differ through naturally occurring variations (e.g. polymorphisms), each with its own valid existence. This clone is substantially in agreement with the reference, but a complete review of all prevailing variants is recommended prior to use. [More info](#)

OTI Annotation: This clone was engineered to express the complete ORF with an expression tag. Expression varies depending on the nature of the gene.

Components: The ORF clone is ion-exchange column purified and shipped in a 2D barcoded Matrix tube containing 10ug of transfection-ready, dried plasmid DNA (reconstitute with 100 ul of water).

Reconstitution Method:

1. Centrifuge at 5,000xg for 5min.
2. Carefully open the tube and add 100ul of sterile water to dissolve the DNA.
3. Close the tube and incubate for 10 minutes at room temperature.
4. Briefly vortex the tube and then do a quick spin (less than 5000xg) to concentrate the liquid at the bottom.
5. Store the suspended plasmid at -20°C. The DNA is stable for at least one year from date of shipping when stored at -20°C.

RefSeq: [NM_001199042.2](#)

RefSeq Size: 3097 bp

RefSeq ORF: 2121 bp

Locus ID: 64220

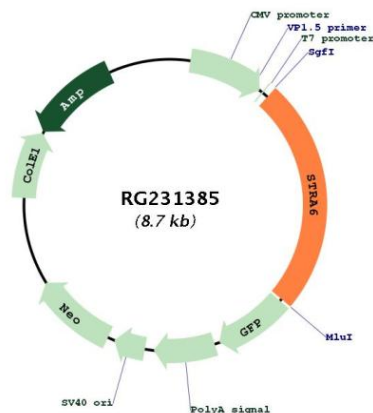
UniProt ID: [Q9BX79](#)

Cytogenetics: 15q24.1

Protein Families: Transmembrane

Gene Summary: The protein encoded by this gene is a membrane protein involved in the metabolism of retinol. The encoded protein acts as a receptor for retinol/retinol binding protein complexes. This protein removes the retinol from the complex and transports it across the cell membrane. Defects in this gene are a cause of syndromic microphthalmia type 9 (MCOPS9). Several transcript variants encoding a few different isoforms have been found for this gene. [provided by RefSeq, Dec 2008]

Product images:



Circular map for RG231385