

Product datasheet for **RG231381**

ODF2 (NM_153432) Human Tagged ORF Clone

Product data:

Product Type:	Expression Plasmids
Product Name:	ODF2 (NM_153432) Human Tagged ORF Clone
Tag:	TurboGFP
Symbol:	ODF2
Synonyms:	CT134; ODF2/1; ODF2/2; ODF84
Mammalian Cell Selection:	Neomycin
Vector:	pCMV6-AC-GFP (PS100010)
E. coli Selection:	Ampicillin (100 ug/mL)



[View online »](#)

ORF Nucleotide
Sequence:

>RG231381 representing NM_153432
Red=Cloning site Blue=ORF Green=Tags(s)

TTTTGTAATACGACTCACTATAGGGCGGCCGGAATTCGTCGACTGGATCCGGTACCGAGGAGATCTGCC
GCC**CGCATCGCC**

ATGGGCGAGCTGCCGACCGGGTGTGCGAAAAGGAGGCGGAAGCGGGGAGGAGCCGCTGCCAGAGCCAGAC
TGCATCCGCCGCGCGTCTCCATGGCACGACCCTGGCCTCCGACTTCAACGACTTCATAAGGCGGGGTTT
CTGGGCGCAGCCGTGTCGCTCCTGGTTTCCATCGTGTGGGAAGAACGGAGTAACGAGTCTCACGCAGAAA
AAGGTCTTGAGAGCACCTTGTCGCGCACCCAGTGTAACTGTGACGAAATCTCACAAAGCGAGGAATGAAA
GGGACACTGTGAATGTGCGGGGAGTGTCCGGGTGAAAACCAAGGTACCTTGGATGCCCCCTGAAAAATC
ATCTGCCCGCCGTGGGATGCAAGTGGGAGAATCCACCTCATTGCCTGGAGATCACGCCACCATCTTCA
GAAAAGCTGGTCTCAGTGATGCGGTTAAGTGACCTCTACAGAAGATGATGACTCAGGTCAGTGTAAAA
TGAACCGTTATGATAAGAAGATTGATAGTCTAATGAATGCGGTTGGTTGTCTGAAGTCTGAGGTCAAGAT
GCAAAAAGGTGAGCGCCAGATGGCCAAAAGGTTCTGGAGGAACGGAAGGAAGAGCTGGAGGAGGTGCC
CACGAACCTGGCTGAGACTGAGCAGGAGAACACCGGTGTTGAGGCACAACATCGAGCGCATGAAGGAGGAGA
AGGACTTCACCATACTTCAGAAGAAACCTACAAAGGAGAAGGAGTGCCTCATGTCCAAGCTGGTGGGA
GGCGGAAATGGATGGGGCTGCGGCTGCCAAGCAGGTGATGGCCTTGAAGGATACCATCGGGAAGCTGAAA
ACGGAGAAAACAAATGACCTGCACGGACATCAACACCCTGACAAGGAGGAGGAACTTCTCCTGCAGAAGC
TGAGCACAATTTGAGGAGACCAACCGCACCTCCGAGACCTCCTGAGGGAACAGCACTGCAAAAGAGGATTC
TGAAAGACTAATGGAGCAACAAGGAGCACTGCTGAAACGGCTGGCGGAGGCCGACTCAGAGAAAGCGCGC
CTGCTGTTACTGCTGCAAGACAAGGACAAGGAGGTGGAAGAGCTCCTTCAGGAAATACAATGTGAGAAGG
CTCAAGCAAAGACAGCCTCTGAGCTTTCTAAATCCATGGAGTCCATGCGTGGGCATTTGACGGCACAGCT
TCGGTCCAAAGAGGCTGAGAACAGTCCCTGTGCATGCAGATTAAGAATCTGGAGCGCAGCGGGAATCAG
CATAAGGCAGAAGTGGAGGCCATCATGGAGCAGCTGAAGGAGTTGAAGCAGAAGGAGACCGAGACAAG
AGAGCTTGAAGAAGGCCATCCGAGCCCAGAAGGAGCGAGCCGAGAAGAGCGAGGAGTATGCTGAGCAGCT
ACACGTGCAACTCGCTGACAAGGATCTTTATGTCGCTGAAGCTTTATCCACTCTGGAATCCTGGAGGAGC
CGCTACAACCAAGTTGTAAGAAAAGGGAGACCTTGAGCTGGAATTTATGTCCTGAATGACCGGGTAA
CAGATCTTGTAAACCAACAACAACCCCTGGAGGAGAAGATGCGGGAAGACCGGGATAGCCTGGTGGAGAG
ACTACACCGTCAGACTGCTGAGTATTCGCATTCAGCTGGAGAATGAGAGGCTGAAGGCCAGCTTTGCT
CCAATGGAGGACAACTCAACCAGGCACACCTCGAGGTCCAGCAGCTGAAGGCCTCAGTGAAGAATATG
AGGGGATGATTGACAACATAAGAGTCAGGTGATGAAGACCAGATTGGAGGCTGATGAAGTAGCTGCCCA
GCTAGAACGCTGTGACAAAGAGAACAAGATCCTTAAAGATGAGATGAACAAAGAGATTGAGGCGGCACGA
AGGCAGTTCAGTCTCAGCTGGCTGACCTGCAGCAGCTCCCTGACATCCTGAAGATCACGGAGGCGAAGC
TGGCTGAGTGCCAAGACCAACTGCAGGGCTATGAGCGGAAGAATCGACCTCACAGCCATCATATCAGA
CCTGCGCAGCCGGTAAGGGACTGGCAGAAAGGTTCCACGAACCTGACCCGAGCAGGGGCCCGCATACCA
AGA

ACGCGTACGCGGCCGCTCGAG - GFP Tag - GTTTAA

Protein Sequence: >RG231381 representing NM_153432
 Red=Cloning site Green=Tags(s)

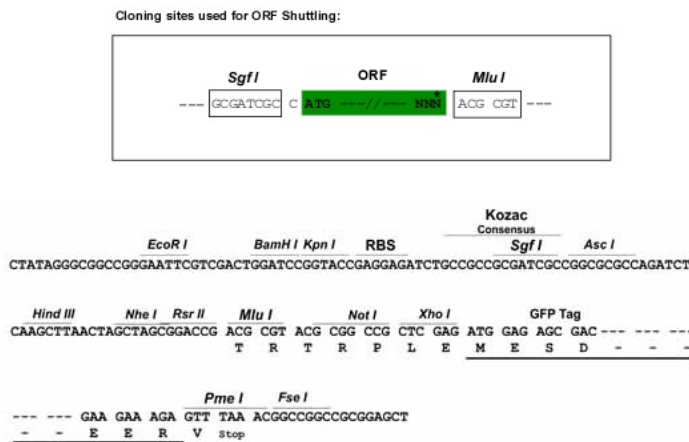
```

MGELPTGCRKRRRKRGGAAARLHPPRRLHGTTLASDFNDFIRRRFWAQPGRSWFPCGKNGVTSLTQK
KVLRAPCGAPSVTVTKSHKRGMKGDTVNVRRSVRVKTKVPWMPGKSSARVPGCKWENPPHCLEITPPSS
EKLVSVMRLSDLSTEDDDSGHCKMNRDCKIDSMLMNAVGLKSEVKMQKGERQMAKRFLERKEELEVA
HELAETEHEHTVLRHNIERMKEEKDFITLQKKHLQQEKECLMSKLVAEAMDGAAAQVMALKDITGKGL
TEKQMTCTDINTLTRQKELLLQKLSSTFEETNRTRLRDLLREQHCKEDSERLMEQQGALLKRLAEADSEKAR
LLLLLQDKDKEVEELLQEIQCEKAQAKTASELSKSMESMRGHLQAQLRSKEAENSRLCMQIKNLSRGNQ
HKA EVEAIMEQLKELKQKGRDKESLKKAI RAQKERA EKSE EYAEQLHVQLADKDLVYAEALSTLESWRS
RYNQVVKKEGDLLELEIIVLNDRVTDLVNQQTLEEKMRDRDSLVERLHRQTAEYSAFKLENERLKASFA
PMEDKLNQAHLEVQQLKASVKNYEGMIDNYKSQVMKTRLEAEVAAQLERCDKENILKDEMKEIEAAR
RQFQSQLADLQQLPDILKITEAKLAECQDQLQGYERKNIDLTAIISDLRSRVRDQWQKGSHELTRAGARIP
R
  
```

TRTRPLE - GFP Tag - V

Restriction Sites: SgfI-MluI

Cloning Scheme:



ACCN: NM_153432

ORF Size: 2103 bp

OTI Disclaimer: The molecular sequence of this clone aligns with the gene accession number as a point of reference only. However, individual transcript sequences of the same gene can differ through naturally occurring variations (e.g. polymorphisms), each with its own valid existence. This clone is substantially in agreement with the reference, but a complete review of all prevailing variants is recommended prior to use. [More info](#)

OTI Annotation: This clone was engineered to express the complete ORF with an expression tag. Expression varies depending on the nature of the gene.

Components: The ORF clone is ion-exchange column purified and shipped in a 2D barcoded Matrix tube containing 10ug of transfection-ready, dried plasmid DNA (reconstitute with 100 ul of water).

Reconstitution Method:

1. Centrifuge at 5,000xg for 5min.
2. Carefully open the tube and add 100ul of sterile water to dissolve the DNA.
3. Close the tube and incubate for 10 minutes at room temperature.
4. Briefly vortex the tube and then do a quick spin (less than 5000xg) to concentrate the liquid at the bottom.
5. Store the suspended plasmid at -20°C. The DNA is stable for at least one year from date of shipping when stored at -20°C.

RefSeq: [NM_153432.1](#), [NP_702910.1](#)

RefSeq Size: 2301 bp

RefSeq ORF: 2106 bp

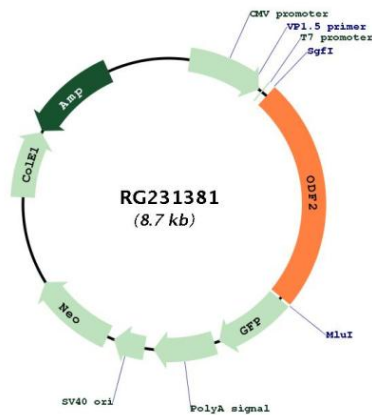
Locus ID: 4957

UniProt ID: [Q5BJF6](#)

Cytogenetics: 9q34.11

Gene Summary: The outer dense fibers are cytoskeletal structures that surround the axoneme in the middle piece and principal piece of the sperm tail. The fibers function in maintaining the elastic structure and recoil of the sperm tail as well as in protecting the tail from shear forces during epididymal transport and ejaculation. Defects in the outer dense fibers lead to abnormal sperm morphology and infertility. This gene encodes one of the major outer dense fiber proteins. Alternative splicing results in multiple transcript variants. The longer transcripts, also known as 'Cenexins', encode proteins with a C-terminal extension that are differentially targeted to somatic centrioles and thought to be crucial for the formation of microtubule organizing centers. [provided by RefSeq, Oct 2010]

Product images:



Circular map for RG231381