

Product datasheet for **RG231379**

Calpastatin (CAST) (NM_001190442) Human Tagged ORF Clone

Product data:

Product Type:	Expression Plasmids
Product Name:	Calpastatin (CAST) (NM_001190442) Human Tagged ORF Clone
Tag:	TurboGFP
Symbol:	CAST
Synonyms:	BS-17; PLACK
Mammalian Cell Selection:	Neomycin
Vector:	pCMV6-AC-GFP (PS100010)
E. coli Selection:	Ampicillin (100 ug/mL)



[View online »](#)

ORF Nucleotide
Sequence:

>RG231379 representing NM_001190442
Red=Cloning site Blue=ORF Green=Tags(s)

TTTTGTAATACGACTCACTATAGGGCGGCCGGGAATTCGTCGACTGGATCCGGTACCGAGGAGATCTGCC
GCCGCGATCGCC

ATGAATCCCACAGAAACCAAGGCCATTCCAGTCAGCCAACAGATGGAAGGACCACATCTTCTAACAAGA
AAAAACACAAAAACAGGCTGTAAAAACAGAACCTGAGAAGAAGTCACAGTCAACCAAGCTGTCTGTGGT
TCATGAGAAAAAATCCCAAGAAGGAAAGCCAAAAAAGCACACAGAGCCAAAAAGCCTACCCAAGCAGGCA
TCAGATACAGGAAGTAACGATGCTCACAATAAAAAAGCAGTTTCCAGATCAGCTGAACAGCAGCCATCAG
AGAAATCAACAGAACCAAGACTAAACCACAAGACATGATTTCTGCTGGTGGAGAGAGTGTGCTGGTAT
CACTGCAATATCTGGCAAGCCGGTGACAAGAAAAAGAAAAAGAAATCATTAACCCAGCTGTGCCAGTT
GAATCTAAACCGGATAAACCATCGGAAAGTCAGGCATGGATGCTGCTTTGGATGACTTAATAGATACTT
TAGGAGGACCTGAAGAACTGAAGAAGAAAATACAACGTATACTGGACCAGAAGTTTCAGATCCAATGAG
TTCCACCTACATAGAGGAATTGGGTAAGGAGAAGTCACAATTCCTCCAAAATATAGGGAATATTGGCT
AAACCCATAGGGCCAGATGATGCTATAGACGCCTTGTCATCTGACTTCACCTGTGGGTCGCCTACAGCTG
CTGGAAAGAAAAGTGAAGAAAGAGGAATCTACAGAAGTTTTAAAAGCTCAGTCAGCAGGGACAGTCAGAAG
TGCTGCTCCACCCAAGAGAAGAAAAGAAAGGTGGAGAAGGATACAATGAGTGAATCAAGCACTCGAGGCT
CTGTGGCTTCACTGGGCACCCGGCAAGCAGAACCTGAGCTCGACCTCCGCTCAATTAAGGAAGTCGATG
AGGCAAAAGCTAAAGAAGAAAAGTGAAGAAGTGTGGTGAAGGATGATGAAACAATCCCATCTGAGTACAG
ATTAACCAGCCACGGATAAAGATGGAAGAACCTATTGCCAGAGCCTGAAGAAAAACCAAGCCTCGG
AGTGAATCAGAACTCATTGATGAACTTTCAGAAGATTTGACCGGCTGAATGTAAGAGAAACCATCTA
AGCCAACTGAAAAGACAGAAGAATCTAAGGCCGCTGCTCCAGCTCCTGTGTCGGAGGCTGTGTGTCGGAC
CTCCATGTGTAGTATACAGTCAGCACCCCTGAGCCGGCTACCTTGAAGGGCACAGTGCCAGATGATGCT
GTAGAAGCCTTGCTGATAGCCTGGGAAAAAGGAAGCAGATCCAGAAGATGAAAAACCTGTGATGGATA
AAGTCAAGGAGAAGGCCAAAGAAGAACCCGTGAAAAGCTTGGTAAAAAGAAAGAAACAATTCCTCCTGA
TTATAGATTAGAAGAGGTCAAGGATAAAGATGGAAGCCACTCCTGCCAAAAGAGTCTAAGGAACAGCTT
CCACCCATGAGTGAAGACTTCTTCTGGATGCTTTGTCTGAGGACTTCTCTGGTCCAAAAATGCTTCAT
CTCTTAAATTTGAAGATGCTAACTTGTGCTGCCATCTCTGAAGTGGTTTCCCAAACCCAGCTTCAAC
GACCCAAGCTGGAGCCCCACCCGTGATACCTCGCAGAGTGACAAAGACCTCGATGATGCCTTGGATAAA
CTCTCTGACAGTCTAGGACAAAGCAGCCTGACCCAGATGAGAACAACCAATGGAAGATAAAGTAAAGG
AAAAAGCTAAAGCTGAACATAGAGACAAGCTTGGAGAAAGAGATGACACTATCCCACCTGAATACAGACA
TCTCTGGATGATAATGGACAGGACAAACAGTGAAGCCACTACAAAGAAATCAGAGGATTCAAAGAAA
CCTGCAGATGACCAAGACCCATTGATGCTCTCTCAGGAGATCTGGACAGCTGTCCCTCCACTACAGAAA
CCTCACAGAACACAGCAAGGATAAGTGAAGAAGGCTGCTTCCAGCTCCAAAGCCTAAGAATGGAGG
TAAAGCGAAGGATTACGCAAGACAACAGAGGAAACTTCAAGCCAAAAGATGAC

ACGCGTACGCGGCCGCTCGAG – GFP Tag – GTTTAA

Protein Sequence: >RG231379 representing NM_001190442
 Red=Cloning site Green=Tags(s)

MNPTETKAIPVSQQMEGPHLPNKKKHKKQAVKTEPEKKSQSTKLSVVHEKKSQEGPKKEHTEPKSLPKQA
 SDTGSNDAHNKKAVSRSAEQPSEKSTEPKTKPQDMI SAGGESVAGITAI SGKPGDKKKEKSLTPAVPV
 ESKPDKPSGKSGMDAALDDLIDTLGGPEETEENTTYTGPEVSDPMSSTYIEELGKREVTIPPKYRELLA
 KP IGPDDAIDALSSDFTCGSPTAAGKKTEKEESTEVLKAQSAGTVRSAAPPQEKKRKVEKDTMSDQALEA
 LSASLGRQAPEL DLRSI KEVDEAKAKEEKLEKCGEDDETIPSEYRLKPATDKDGKPLLP EPEEKPKPR
 SESELIDELSEDFDRSECKEKPSKPTKTEESKAAAPAVSEAVCRTSMCSIQSAPPEPATLKGTVPDDA
 VEALADSLGKKEADPEDGKPVMDKVKEKAKEEDREKLGEKEETIPDPYRLEEVKDKDGKPLLPKESKEQL
 PPMSEDFLLDALSEDFSGPQNASSLKFEDAKLAAAI SEVVSQTPASTTQAGAPPRDTSQSDKDLDDALDK
 LSDSLGQRQPPDENKPMEDKVKKEKAKAEHRDKLGERDDTIPPEYRHLDDNGQDKPVKPPTKKSEDSK
 PADDQPIDALSGDL DSCPSTTETSQNTAKDKCKKAASSSKAPKNGGKAKDSAKTTEETSKPKDD

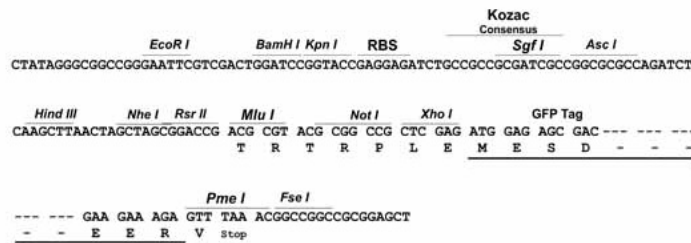
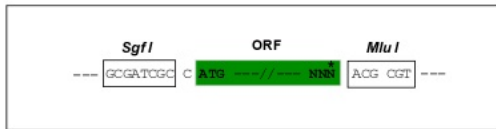
TRTRPLE - GFP Tag - V

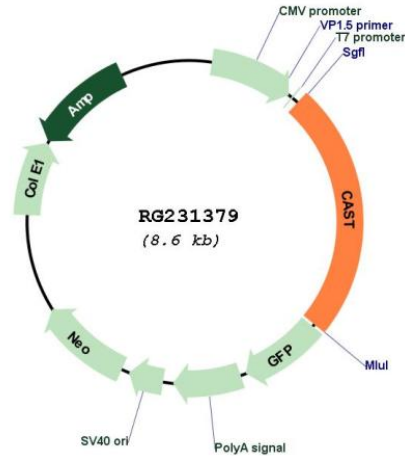
Restriction Sites:

SgfI-MluI

Cloning Scheme:

Cloning sites used for ORF Shuttling:



Plasmid Map:


ACCN: NM_001190442

ORF Size: 2085 bp

OTI Disclaimer: The molecular sequence of this clone aligns with the gene accession number as a point of reference only. However, individual transcript sequences of the same gene can differ through naturally occurring variations (e.g. polymorphisms), each with its own valid existence. This clone is substantially in agreement with the reference, but a complete review of all prevailing variants is recommended prior to use. [More info](#)

OTI Annotation: This clone was engineered to express the complete ORF with an expression tag. Expression varies depending on the nature of the gene.

Components: The ORF clone is ion-exchange column purified and shipped in a 2D barcoded Matrix tube containing 10ug of transfection-ready, dried plasmid DNA (reconstitute with 100 ul of water).

Reconstitution Method:

1. Centrifuge at 5,000xg for 5min.
2. Carefully open the tube and add 100ul of sterile water to dissolve the DNA.
3. Close the tube and incubate for 10 minutes at room temperature.
4. Briefly vortex the tube and then do a quick spin (less than 5000xg) to concentrate the liquid at the bottom.
5. Store the suspended plasmid at -20°C. The DNA is stable for at least one year from date of shipping when stored at -20°C.

RefSeq: [NM_001190442.1](#), [NP_001177371.1](#)

RefSeq Size: 4468 bp

RefSeq ORF: 2088 bp

Locus ID: 831

Cytogenetics: 5q15

Gene Summary: The protein encoded by this gene is an endogenous calpain (calcium-dependent cysteine protease) inhibitor. It consists of an N-terminal domain L and four repetitive calpain-inhibition domains (domains 1-4), and it is involved in the proteolysis of amyloid precursor protein. The calpain/calpastatin system is involved in numerous membrane fusion events, such as neural vesicle exocytosis and platelet and red-cell aggregation. The encoded protein is also thought to affect the expression levels of genes encoding structural or regulatory proteins. Alternatively spliced transcript variants encoding different isoforms have been described. [provided by RefSeq, Jun 2010]