

Product datasheet for **RG231358**

IKBKE (NM_001193322) Human Tagged ORF Clone

Product data:

Product Type:	Expression Plasmids
Product Name:	IKBKE (NM_001193322) Human Tagged ORF Clone
Tag:	TurboGFP
Symbol:	IKBKE
Synonyms:	IKK-E; IKK-i; IKKE; IKKI
Mammalian Cell Selection:	Neomycin
Vector:	pCMV6-AC-GFP (PS100010)
E. coli Selection:	Ampicillin (100 ug/mL)



[View online »](#)

ORF Nucleotide
Sequence:

>RG231358 representing NM_001193322
Red=Cloning site Blue=ORF Green=Tags(s)

TTTTGTAATACGACTCACTATAGGGCGGCCGGGAATTCGTCGACTGGATCCGGTACCGAGGAGATCTGCC
GCCGCGATCGCC

ATGCAGAGCACAGCCAATTACCTGTGGCACACAGATGACCTGCTGGGGCAGGGGGCCACTGCCAGTGTGT
ACAAGGCCCGCAACAAGAAATCCGGAGAGCTGGTTGCTGTGAAGGTCTTCAACACTACCAGCTACCTGCG
GCCCCGCGAGGTGCAGGTGAGGGAGTTTGGAGTCTGCGGAAGCTGAACCACCAGAACATTGTCAAGCTC
TTTGCGGTGGAGGAGACGGGCGGAAGCCGGCAGAAAGTACTGGTGTGAGTACTGCTCCAGTGGGAGCC
TGCTGAGTGTGCTGGAGAGCCCTGAGAATGCCTTTGGGCTGCCTGAGGATGAGTTCCTGGTGGTGTGCG
CTGTGTGGTGGCCGGCATGAACCACCTGCGGGGAGAACGGCATTGTGCATCGCGACATCAAGCCGGGAAC
ATCATGCGCCTCGTAGGGGAGGAGGGGCAGAGCATCTACAAGCTGACAGACTTCGGCGCTGCCCGGGAGC
TGGATGATGATGAGAAGTTCGTCTCGTCTATGGGACTGAGGAGTACCTGCATCCCGACATGTATGAGCG
GGCGGTGCTTCGAAAGCCCCAGCAAAAAGCGTTCCGGGTGACTGTGGATCTCTGGAGCATTGGAGTGACC
TTGTACCATGCAGCCACTGGCAGCCTGCCTTCACTCCCTTTGGTGGGCCACGGCGGAACAGGAGATCA
TGTACCGGATCACCCAGGAGAAGCCGGCTGGGGCCATTGCAGGTGCCAGAGCGGGGAGAACGGGCCCT
GGAGTGGAGCTACACCCTCCCCATCACCTGCCAGCTGTCACTGGGGCTGCAGAGCCAGCTGGTGGCCATC
CTGGCCAAACATCTGGAGGTGGAGCAGGCCAAGTGTGGGGCTTCGACCAGTTCTTTGCGGAGACCAGTG
ACATCTGCAGCGAGTTGTCTGCATGTCTTCTCCCTGTCCCAGGCAGTCTGCACCACATCTATATCCA
TGCCCCAACACGATAGCCATTTCCAGGAGCCGTGCACAAGCAGACCAGTGTGGCCCCCGACACCAG
GAGTACCTCTTTGAGGGTACCCTCTGTCTCGAGCCAGCGTCTCAGCACAGCACATCGCCACACGA
CGGAAGCAGCCCCCTGACCCTTTCAGCACAGCCATCCCTAAGGGGCTGGCCTTCAGGGACCTGTCT
GGACGTCCCCAAGTTCGTCCCCAAAGTGGACCTGCAGGCGGATTACAACACTGCCAAGGGCGTGTGGGC
GCCGGCTACCAGGCCCTGCGGCTGGCACGGCCCTGCTGGATGGGCAGGAGCTAATGTTTCGGGGCTGC
ACTGGGTGATGGAGGTGCTCCAGGCCACATGCAGACGGACTCTGGAAGTGGCAAGGACATCCCTCTCTA
CCTCAGCAGCAGCCTGGGAACTGAGAGGTTTCAGCAGCGTGGTGGAAAGCCTGAGATCCAGGAACTGAAG
GCGGCTGCAGAACTGAGGTCCAGGCTGCGGACTCTAGCGGAGGTCTCTCCAGATGCTCCCAAAATATCA
CGGAGACCCAGGAGCCTGAGCAGCCTGAACCGGAGCTGGTGAAGAGCCGGGATCAGGTACATGAGGA
CAGAAGCATCCAGCAGATTCACTGCTGTTTGGACAAGATGAAGTTCATCTACAAACAGTTCAAGAAGTCT
AGGATGAGGCCAGGGCTTGCTACAACGAGGAGCAGATTACAAGCTGGATAAGGTGAATTTCAAGTATT
TAGCCAAAAGACTCCTGCAGGTGTTCCAGGAGGAGTGCCTGCAGAAGTATCAAGCGTCTTAGTCACACA
CGGCAAGAGGATGAGGTTGGTGCACGAGACCAGGAACCTGCGCCTGGTTGGCTGTTCTGTGGCTGCC
TGTAACACAGAAGCCAGGGGTCCAGGAGAGTCTCAGCAAGCATGCAAGAGCTCTGCGAGGGGATGAAG
CTGCTGGCATC

ACGCGTACGCGGCCGCTCGAG – GFP Tag – GTTTAA

Protein Sequence: >RG231358 representing NM_001193322
 Red=Cloning site Green=Tags(s)

MQSTANYLWHTDDLQGGATASVYKARNKKSSELVAVKVFNTTSYLRPREVQVREFEVLRLKLNHQNIVKL
 FAVEETGGSRQKVLVMEYCSSGSLLSVLESPENAFGLPEDEFLVLRVAVAGMNLRENGIVHRDIKPGN
 IMRLVGEEGQSIYKLTDFGAARELDDDEKFFSVYGTTEEYLHPDMYERAVLRKPKQKAFQVTVDLWSIGVT
 LYHAATGSLPFIPIFGGPRRNKEIMYRITTEKPGAIAGAQRRENGPLEWSYTLPIITCQLSLGLQSLVPI
 LANILEVEQAKCWGFDQFFAETSDILQRVVVHVFSLSQAVLHHIYIHAHNTIAIFQEAVHKQTSVAPRHQ
 EYLFEGHLCVLEPSVSAQHIAHTTASSPLTLFSTAIPKGLAFRDPALDVPKFPVKVDLQADYNTAKVGLG
 AGYQALRLARALLDQELMFRGLHWVMEVLQATCRRTLEVARTSLLYLSSSLGTERFSSVAGTPEIQELK
 AAAELRSRLRTLAEVLSRCSQNI TETQESLSSLNREL VKSRDQVHEDRSIQIQCCLDKMMFIYKQFKKS
 RMRPGLGYNEEQIHKLDKVNFSHLAKRLLQVFQEECVQKYQASLVTHGKRMRVVHETRNHLRLVGCSSVAA
 CNTEAQGVQESLSKHARALRGDEAAGI

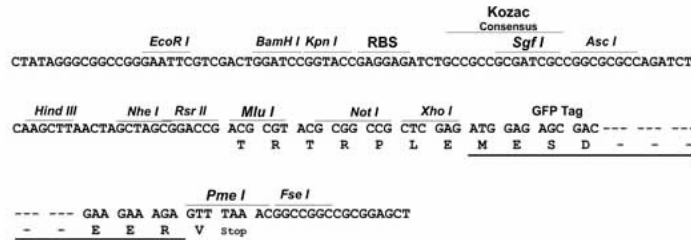
TRTRPLE - GFP Tag - V

Restriction Sites:

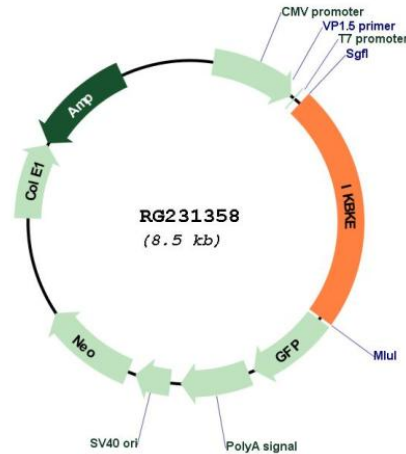
SgfI-MluI

Cloning Scheme:

Cloning sites used for ORF Shuttling:



Plasmid Map:



ACCN: NM_001193322

ORF Size: 1971 bp

OTI Disclaimer: The molecular sequence of this clone aligns with the gene accession number as a point of reference only. However, individual transcript sequences of the same gene can differ through naturally occurring variations (e.g. polymorphisms), each with its own valid existence. This clone is substantially in agreement with the reference, but a complete review of all prevailing variants is recommended prior to use. [More info](#)

OTI Annotation: This clone was engineered to express the complete ORF with an expression tag. Expression varies depending on the nature of the gene.

Components: The ORF clone is ion-exchange column purified and shipped in a 2D barcoded Matrix tube containing 10ug of transfection-ready, dried plasmid DNA (reconstitute with 100 ul of water).

Reconstitution Method:

1. Centrifuge at 5,000xg for 5min.
2. Carefully open the tube and add 100ul of sterile water to dissolve the DNA.
3. Close the tube and incubate for 10 minutes at room temperature.
4. Briefly vortex the tube and then do a quick spin (less than 5000xg) to concentrate the liquid at the bottom.
5. Store the suspended plasmid at -20°C. The DNA is stable for at least one year from date of shipping when stored at -20°C.

RefSeq: [NM_001193322.2](#)

RefSeq Size:	3379 bp
RefSeq ORF:	1974 bp
Locus ID:	9641
UniProt ID:	Q14164
Cytogenetics:	1q32.1
Protein Families:	Druggable Genome, Protein Kinase
Protein Pathways:	Cytosolic DNA-sensing pathway, RIG-I-like receptor signaling pathway, Toll-like receptor signaling pathway
Gene Summary:	IKBKE is a noncanonical I-kappa-B (see MIM 164008) kinase (IKK) that is essential for regulating antiviral signaling pathways. IKBKE has also been identified as a breast cancer (MIM 114480) oncogene and is amplified and overexpressed in over 30% of breast carcinomas and breast cancer cell lines (Hutti et al., 2009 [PubMed 19481526]).[supplied by OMIM, Oct 2009]