

## Product datasheet for **RG231355**

### **NT5C1B (NT5C1B-RDH14) (NM\_001199103) Human Tagged ORF Clone**

#### **Product data:**

Product Type:	Expression Plasmids
Product Name:	NT5C1B (NT5C1B-RDH14) (NM_001199103) Human Tagged ORF Clone
Tag:	TurboGFP
Symbol:	NT5C1B
Synonyms:	AIRP; cN-IB; cN1B; NT5C1B
Mammalian Cell Selection:	Neomycin
Vector:	pCMV6-AC-GFP (PS100010)
E. coli Selection:	Ampicillin (100 ug/mL)



[View online »](#)

**ORF Nucleotide Sequence:**

>RG231355 representing NM\_001199103  
 Red=Cloning site Blue=ORF Green=Tags(s)

TTTTGTAATACGACTCACTATAGGGCGGCCGGAATTCGTCGACTGGATCCGGTACCGAGGAGATCTGCC  
 GCC**CGGATCGCC**

ATGAGTCAAACATCTCTCAAACAGAAAAAAGATGAGCCTGGAATGAGGTCCTCAAAGAGAGTCTAGAAG  
 CAGAAAAAAGAAAGGAATCTGACAAAACAGGAGTTCGTCTGAGCAATCAGGGATCACAAGAATCATCACT  
 GCGGAAGACAGACTCTCGAGGGTACCTTGTGCGCAGTCAATGGTCTAGAATATCCCGGAGCCCATCCACC  
 AAGGCTCCATCCATAGATGAGCCTAGAAGCAGGAACACCAGTGCTAAGGTAGAGCTCCCCAGCAGCTCCA  
 CGAGCTCCCGGACTCCATCCACCTCCCCAAGCCTGCATGACTCCTACCGCCGCCGCTGTCCGGGCAGCC  
 CTCGCTCCAGCCACCCGCGTCGCCCCAGCTGCCCGGTGCTGGACTCGCGGCCTCCACGCCCCAGAG  
 CCCGATCTGGCTCCCGGCGCAGCACAAAATGCAAGAGAATCCGGAGGCCTGGGCCAAGGCATCGTGC  
 GGGAAATCCGCCAGACCCGGGACTCGCAGCCGCTGGAATATTGCGCACGTCGCCACCGAGTGGAAAGTC  
 CTCAGCCAGCGCAGGGGATCTACCCGCTCCACCCAGCTGGACCGCAACTCTCTGTCCGAGCAGCAG  
 CAGCAGCAGCGGAGGACGAGGACGACTACGAGGCTGCCTACTGGGCATCCATGAGGTGTTCTACGAGA  
 AGAACCCGAGCTGCTCGGCCCTGGCCGCCAAACCCAAAGAAGCCATCACCATTGCTCTCTATCCTG  
 CGCGCTTTCAACATGGTGGACGGCAGGAAAATCTACGAGCAAGAGGGTCTGAAAAAGTACATGGAGTAT  
 CAGCTACCAATGAGAACGTCATCTGACCCCGGGCCCGCGTTCGCTTCAAGGCACTACAGTATG  
 TCAATGCTAGACTCCGTGATCTATCTGATGAACAGGACTATTTGATATTGACTGATGACTAATAA  
 CCATGCCAAAGTGGGAGTGGGCTTATAAACAGCGTCAATCACTACGGCTTACTGATTGACCGCTTCTGT  
 CTGACCCGGGGAAAAGACCCATTGGCTATTTGAAGGCATATCTACCACTTGTATATTGCTGCAGATT  
 TGGAAAAAGTCAAGAGGCAATACAAGAAGGATTGCTCTGCGACAATGTTTGTAGGCCAAAGACAT  
 GGCTTACTGTGACACTCAGCTCCGTGTAGCCTTTGATGGGATGCTGTCCTTCTCTGATGAGTCTGAA  
 CATTTTACCAAGGAGCATGGGCTCGACAATTCTTCCAGTATGATACATTATGTGAAAGTAAAGCCTCTTG  
 CTCAGGAAGAGCCTAGGCTGGATGTCTTGTCAATAACGCAGGGATCTTCCAGTGCCTTACATGAAGAC  
 TGAAGATGGGTTTGTAGTGCAGTTCGGAGTGAACCATCTGGGCACCTTCTACTACCAATCTTCTCCTT  
 GGACTCTCAAAGTTTCACTCCAGCAGGATTGTGGTAGTTTCTTCAAACCTTATAAAACGGAGACA  
 TCAATTTTGTAGACTTGAACAGTGAACAAAGCTATAATAAAAGCTTTTGTATAGCCGGAGCAAAGTGGC  
 TAACATCTTTTTACCAGGAACTAGCCCGCCGCTTAGAAGGCACAAATGTCACCGTCAATGTGTTGCAT  
 CCTGGTATTGTACGGACAAATCTGGGAGGCACATACACATTCCACTGTTGGTCAAACCACTCTTCAATT  
 TGGTGTATGGGCTTTTTTCAAACCTCCAGTAGAAGGTGCCAGACTTCCATTTATTTGGCTCTTACC  
 TGAGGTAGAAGGAGTGTAGGAAGATACTTTGGGATTGTAAGAGGAAGAACTGTTGCCAAAGCTATG  
 GATGAATCTGTTGCAAGAAAACCTCTGGGATATCAGTGAAGTATGGTTGGCCTGCTAAAA

**ACGCGT**ACGCGGCCGCTCGAG – GFP Tag – GTTTAA

**Protein Sequence:**

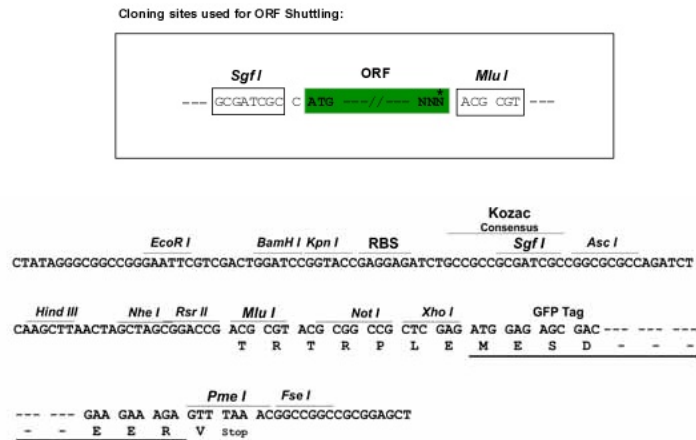
>RG231355 representing NM\_001199103  
 Red=Cloning site Green=Tags(s)

MSQTSLKQKKNPEGMRSSKESLEAEKRKESDKTGVRLSNQGSQESSLRKTDSTRGYLVRSQWSRISRSPST  
 KAPSIDEPKRSNTSAKVELPSSSTSSRTPSTSPSLHDSPPPLSGQPSLQPPASPQLPRSLDSRPPTPE  
 PDPGSRSTKMQENPEAWAQIVREIRQTRDSQPLEYSRTSPTWKSQRRGIYPASTQLDRNSLSEQQ  
 QQQREDDDYEAAYWASMRSFYEKNPSCSRPWPCKPKNAITIALSSCALFNMVDGRKIYEQEGLEKMEY  
 QLTNENVILTPGPAFRFVKALQYVNRRLRDLYPDEQDLFDIVLMTNHAQVGVRLINSVNHVGLLIDRF  
 LTGGKDPJIGYLKAYLTNLYIAADSEKVEAIQEGIASATMFDGAKDMAYCDTQLRVAFDGDAVLFSDSE  
 HFTKEHGLDKFFQYDTLCEKPLAQEPRDLVLIINNAGIFQCPYMKTEDGFEMQFVGNHGHFLLTNLLL  
 GLLKSSAPSRIVVVSSKLYKYGDINFDDLNSEQSYNKSFCYSRSLANILFTRELARRLEGNTVNVNLH  
 PGIVRNLGRHIHPLLVKPLFNLVSWAFFKTPVEGAQTSIYLASSPEVEGVSGRYFGDCKEELLPKAM  
 DESVARKLWDISEVMVGLLK

**TRTRPLE** – GFP Tag – V

Restriction Sites: SgfI-MluI

Cloning Scheme:



ACCN: NM\_001199103

ORF Size: 1950 bp

OTI Disclaimer: The molecular sequence of this clone aligns with the gene accession number as a point of reference only. However, individual transcript sequences of the same gene can differ through naturally occurring variations (e.g. polymorphisms), each with its own valid existence. This clone is substantially in agreement with the reference, but a complete review of all prevailing variants is recommended prior to use. [More info](#)

OTI Annotation: This clone was engineered to express the complete ORF with an expression tag. Expression varies depending on the nature of the gene.

Components: The ORF clone is ion-exchange column purified and shipped in a 2D barcoded Matrix tube containing 10ug of transfection-ready, dried plasmid DNA (reconstitute with 100 ul of water).

Reconstitution Method:

1. Centrifuge at 5,000xg for 5min.
2. Carefully open the tube and add 100ul of sterile water to dissolve the DNA.
3. Close the tube and incubate for 10 minutes at room temperature.
4. Briefly vortex the tube and then do a quick spin (less than 5000xg) to concentrate the liquid at the bottom.
5. Store the suspended plasmid at -20°C. The DNA is stable for at least one year from date of shipping when stored at -20°C.

RefSeq: [NM\\_001199103.1](#), [NP\\_001186032.1](#)

RefSeq Size: 2533 bp

RefSeq ORF: 1953 bp

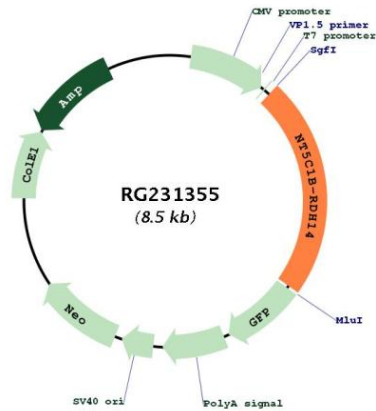
Locus ID: 100526794

Cytogenetics: 2p24.2

**Gene Summary:**

This locus represents naturally occurring read-through transcription between the neighboring NT5C1B (5'-nucleotidase, cytosolic 1B) and RDH14 (retinol dehydrogenase 14) genes on chromosome 2. Alternative splicing results in multiple transcript variants, one of which encodes a fusion protein that shares sequence identity with the products of each individual gene. [provided by RefSeq, Nov 2010]

**Product images:**



Circular map for RG231355