

Product datasheet for **RG231346**

CNOT4 (NM_001190847) Human Tagged ORF Clone

Product data:

| | |
|---------------------------|---|
| Product Type: | Expression Plasmids |
| Product Name: | CNOT4 (NM_001190847) Human Tagged ORF Clone |
| Tag: | TurboGFP |
| Symbol: | CNOT4 |
| Synonyms: | CLONE243; NOT4; NOT4H |
| Mammalian Cell Selection: | Neomycin |
| Vector: | pCMV6-AC-GFP (PS100010) |
| E. coli Selection: | Ampicillin (100 ug/mL) |



[View online »](#)

ORF Nucleotide Sequence:

>RG231346 representing NM_001190847
 Red=Cloning site Blue=ORF Green=Tags(s)

TTTTGTAATACGACTCACTATAGGGCGGCCGGGAATTCGTCGACTGGATCCGGTACCGAGGAGATCTGCC
 GCCGCGATCGCC

ATGTCTCGCAGTCTGATGCGAAGGAAGACCCTGTGGAGTGCCCTCTTTCATGGAGCCCTTGGAGATAG
 ATGATATCAACTTTTCCCTTGACCTGTGGCTACCAGATTTGCCGATTTTGTGGCATCGAATTCGCAC
 TGATGAAAATGGCTTTGTCTGATGTAGAAAAGCCATATCCAGAAGACCCAGCAGTTTATAAAACCACTC
 TCCAGGAAGAGCTGCAAAGGATAAAGAATGAGAAAAACAGAAACAAAATGAGAGAAAACAGAAAATAT
 CAGAAAATCGCAAACATTTGGCTAGTGTACGTGTCGTACAAAAAACCTCGTCTTTGTTGTAGGTTTATC
 TCAGCGCTAGCAGACCCAGAGGTTTTAAAAACGACCAGAATATTTTGGGAAGTTTGGTAAAAACATAAA
 GTTGTCAATAATAGCACATCATATGCAGGCTCACAGGGTCCAAGTCCAGTGTCTTATGTAACCTATA
 TCCGGTCAGAAGACGCTCTCAGAGCCATACAGTGTGTCAACAATGGTAGTAGATGGCAGAACACTTAA
 GGCATCTCTAGGTACAACAAAATACTGCAGTACTTCTTAAAGAATATGCAGTGTCCAAAACCTGACTGC
 ATGTATCTTCATGAATTTGGGGATGAGGCGGCCAGCTTCAAAAAGAGGAAATGCAGGCGGGTAAACACC
 AAGAATATGAACAGAAGCTACTTCAAGAATTATATAAAATTAATCCCAATTTTCTTCAGCTATCTACGGG
 TTCAGTTGATAAAAAAAGAACAAGTGACACCACTGCAGAGGTACGATACCCCCATTGACAAAACCTTCA
 GATTCTCTCAGTATAGGGAACGGTGATAATCCCAGCAGATATCTAACAGTGTACGCCTTACCACCAC
 CTGGTTTGTCAAATCCAATCCAGTCAATCCCATCAGTTCATCCAATCACAGTGCACGGTCCCCTTTTGA
 AGGGGCAGTAACAGAGTCACAGTCGTTATTCTCAGACAATTTTCGCCATCCCAACCTATCCCAAGTGGG
 CTTCTCTTTCCCCAGCTCCCCACAGACATCCAGTACTGGCTACAGCACCAGAACCAGAGACCTCT
 TCACATCAGAAAACAATCCAGTATCATCTCTACAGACTGGCAAGCAGCTTTTGGCTTTGGTTCTCTAA
 ACAACCAGAGGATGACTTGGGTTTTGATCCCTTCGATGTCACTCGAAAAGCCTTAGCAGACCTGATTGAG
 AAGGAAGTGTCCGTTCAAGACCAACCTCCCTTTCGCCACATCTCTTCAAGAACTCTTTCACACACTA
 CAACCGCAAAGGTCCAGGCTCTGGATTCTGCATCTGCTGCAGCTACAAATGCCAATTCTCTCAATAG
 TACCTTTTCAGTCTTGGCCAGAGGTTCCCTCAATTTTCAGCAGCACCGAGCGGTTTATAATTCATTAGT
 TTTCCAGGCCAGGACCCGCTATCCTTGGATGGCCTTCCACGCAATAGCATCATGCATTGAACCACA
 CAGCAAACCCACCTCAAATAGTAATTTCTGGACTTGAATCTCCCGCCACAGCACAACACAGGTCTGGG
 AGGGATCCCTGTAGCAGGTATCCAGCGTCTTCAGGAAACAGTTTAGACTCTCTCAAGATGACAATCCT
 CCACACTGGCTAAAATCCCTTCAGGCCCTCACAGAGATGGACGGCCCGAGCGTCTCCATCACAGACCC
 ACCACAGCGCCCTTACGACACAGATCCCGCTGCACAGAGCCAGTTGGAATCCCTACCCTCCTCCTTC
 AAACCTTCCAGCTTCCACTCCCAACCCAGGCTTTCAGACAGCCTTTCAGACCCCCAGCAAAACCCCC
 ACAGATTTACTACAGAGTTCAACTGGACCGCCAT

ACGCGTACGCGGCCGCTCGAG - GFP Tag - GTTTAA

Protein Sequence:

>RG231346 representing NM_001190847
 Red=Cloning site Green=Tags(s)

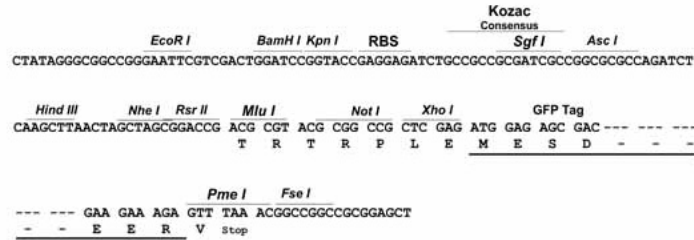
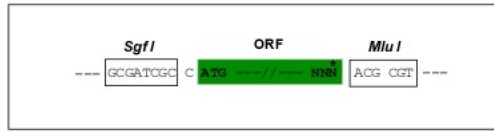
MSRSPDAKEDPVECPLCMEPLEIDDIINFPPCTCGYQICRFWHRIRTDENGLCPACRKPYPEDPAVYKPL
 SQEELQRIKNEKKQKQNERKQKISENRKHLASVRVVQKNLVFVGLSQRLADPEVLKRPEYFGKFGKIHK
 VVINNSTSYAGSQGPSASAYVTYIRSEDALRAIQCVNNVVVDGRTLKASLGTTKYCSYFLKNMQCPKPD
 MYLHELGDAAASFKEEMQAGKHQEQKLLQELYKLNPNFLQLSTGSVDKNKNVTPLQRYDTPIDKPS
 DSLSIGNGDNSQQISNSDTPSPPPGLSKSNPVIPISSSNHSARSPFEGAVTESQSLFSDNFRHPNPIP
 LPPFPSSPQTSSDWPTAPEPQSLFTSETIPVSSSTDWQAAFVGFSSKQPEDDLGDFDVTTRKALADLIE
 KELSVQDQPSLSPSLQNSSHTTAKGPGSGFLHPAAATNANSLNSTFVLPQRFQFQHRVYNSFS
 FPGQAARYPWMAFPRNSIMHLNHTANPTSNSNFLDLNLPQHNTGLGGIPVAGIPASSGNSLDSLQDDNP
 PHWLKSLQALTEMDGSAAPSQTHHSAPFSTQIPLHRASWNPYPPSNPSSFHSPPPGFQAFRPPSKTP
 TDLLQSSTLDRH

TRTRPLE - GFP Tag - V

Restriction Sites: SgfI-MluI

Cloning Scheme:

Cloning sites used for ORF Shutting:



ACCN: NM_001190847

ORF Size: 1926 bp

OTI Disclaimer: The molecular sequence of this clone aligns with the gene accession number as a point of reference only. However, individual transcript sequences of the same gene can differ through naturally occurring variations (e.g. polymorphisms), each with its own valid existence. This clone is substantially in agreement with the reference, but a complete review of all prevailing variants is recommended prior to use. [More info](#)

OTI Annotation: This clone was engineered to express the complete ORF with an expression tag. Expression varies depending on the nature of the gene.

Components: The ORF clone is ion-exchange column purified and shipped in a 2D barcoded Matrix tube containing 10ug of transfection-ready, dried plasmid DNA (reconstitute with 100 ul of water).

Reconstitution Method:

1. Centrifuge at 5,000xg for 5min.
2. Carefully open the tube and add 100ul of sterile water to dissolve the DNA.
3. Close the tube and incubate for 10 minutes at room temperature.
4. Briefly vortex the tube and then do a quick spin (less than 5000xg) to concentrate the liquid at the bottom.
5. Store the suspended plasmid at -20°C. The DNA is stable for at least one year from date of shipping when stored at -20°C.

RefSeq: [NM_001190847.2](#)

RefSeq Size: 3350 bp

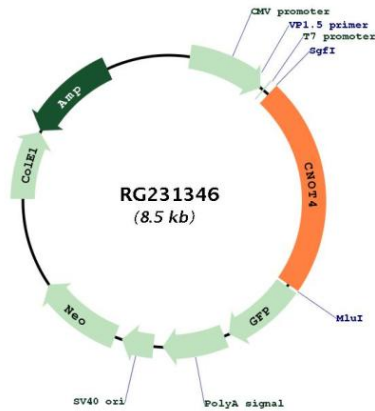
RefSeq ORF: 1929 bp

Locus ID: 4850

UniProt ID: [O95628](#)

Cytogenetics: 7q33
Protein Families: Druggable Genome, Transcription Factors
Protein Pathways: RNA degradation
Gene Summary: The protein encoded by this gene is a subunit of the CCR4-NOT complex, a global transcriptional regulator. The encoded protein interacts with CNOT1 and has E3 ubiquitin ligase activity. Several transcript variants encoding different isoforms have been found for this gene.[provided by RefSeq, Jul 2010]

Product images:



Circular map for RG231346