

## Product datasheet for **RG231317**

### **AOPEP (NM\_001193331) Human Tagged ORF Clone**

#### **Product data:**

Product Type:	Expression Plasmids
Product Name:	AOPEP (NM_001193331) Human Tagged ORF Clone
Tag:	TurboGFP
Symbol:	AOPEP
Synonyms:	AP-O; APO; C9orf3; C9ORF3; ONPEP
Mammalian Cell Selection:	Neomycin
Vector:	pCMV6-AC-GFP (PS100010)
E. coli Selection:	Ampicillin (100 ug/mL)



[View online »](#)

**ORF Nucleotide Sequence:**

>RG231317 representing NM\_001193331  
 Red=Cloning site Blue=ORF Green=Tags(s)

TTTTGTAATACGACTCACTATAGGGCGGCCGGAATTCGTCGACTGGATCCGGTACCGAGGAGATCTGCC  
 GCC**CGGATCGCC**

ATGGACATACAGCTGGACCTGCCAGAGATGACCTGCCTCTCATGGCCAACACCAGCCACATACTTGTGA  
 AGCACTATGTAAGTGGATTGGATGTGGATTTTGAAGTCAAGTATTGAGGGACCATAGTGCTTTTCCT  
 CGAGGATGGAAACAGATTCAAGAAACAGAAATAGCTCTATTGAGGAAGCCTGCCAATCAGAATCAAACAAA  
 GCCTGCAAATTTGGGATGCCTGAACCTGCCATATTCCCGTGACAAATGCAAGGACCTTCTCATCTGAAA  
 TGGAAATAATGATTTTGAATCTGTAGTAAAGGTGAAAAAGATACTTCTGATAAAGATGGTAACCATGA  
 CAACCAGGAACATGCTTCTGGGATTTCTAGCTCAAAGTACTGCTGTGACACAGGGAATCATGGGAGTGAG  
 GATTTTTTGTAGTGTGGACTGCTGTGATTTATCTGTGTTAAAAGTCGAGGAGGTGGATGTTGCTGCTG  
 TGCCAGGTCTGGAAAAATTTACAAGTCTCCTGAGCTCACGGTTGTTTCTGAGGAGTTCAGGAATCAGAT  
 TGTACGTGAACCTGTGACTTTGCCTGCAAATCGTTGGAGGGAGCAGTTAGACTATTACGCTCGCTGCAGC  
 CAGGCTCCTGGCTGTGGGAACTCCTCTTTGACACTGACACTGGAGCTTGACAGATAAGGAAGACAGGGG  
 CTCAGACAGCTACTGACTTTCTCATGCTATCAGGATATGGTACAAAACAACTAAACCTGAAGGGCGATCCGGT  
 TACATGGACCTCAGACCAGAGTGGCAGGCCATGTGTTTATACTGTGGGATCTCCCATAAACACAGGGCC  
 CTTTTCCATGCCAGGAGCCACCCGTTGCCATGTCAACATGGCAGGCTACAGTTCGAGCAGCTGCATCTT  
 TTGTTGTTTTAATGAGTGGGAAAAATTTGCCAAACCAACGCAGCTTTGGGAAGAGTGCTCAAGCTGGTA  
 TTAATAAGTAACTATGCCAATGCCAGCTCCACCTTACAATTGCAGTGGGATGCTGGACAGAAATGAAG  
 ATGGAGACATGGTCATCAAATGATTTGGCAACAGAGAGACCCTTCTCACCTTCTGAGGCCAATTCAGGC  
 ATGTTGGTGTTCAGTCACATGGAATACCCCTGCCGCTCCAGAAATGCTTCTGCCACCACCCAGGAGAT  
 CATTCTCATCGGGTCTTTGCCCTGTGTGCCTCACGGGTGCCTGCCAAGAGACCCTTCTGCGGCTGATC  
 CCTCCTTGCTCTCAGCAGCACATTCTGTTCTGGGAGCACACCCGTTCTCTCGGCTGGATGTTCTCATCG  
 TCCCTGCCAACTTTCAAGTCTGGGATGGCCAGCCACACATCATGTTCTCTCAGAGCATCTTGAC  
 AGGAGGAAACATCTCTGTGGGACCCGCTCTGCCATGAAATGGCCATGCCTGGTTTGGCTAGCCATC  
 GGGGCCGAGACTGGACGGAGGAGTGGCTGAGTGAAGGCTTCGCCACTCACTGGAGGATGTGTTTTGGG  
 CCACAGCACAGCAGCTGGCCCCATGAGGCCCGGAGCAGCAGGAGCTGAGGGCTGTCTGCGCTGGCG  
 TCGCTCCAGGACGAGATGCAATGCTCCCCGAGGAGATGCAGGTGTTAAGGTTCCACATGTTGGCGGA  
 TGCAGTGAAGCTTCTCT

**ACGCGT**ACGCGGCCGCTCGAG - GFP Tag - GTTTAA

**Protein Sequence:**

>RG231317 representing NM\_001193331  
 Red=Cloning site Green=Tags(s)

MDIQLDPARDDLPLMANTSHILVKHYVLDLVDVFESQVIEGTIVLFLLEDGNRFKQNSSIEEACQSESNK  
 ACKFGMPEPCHIPVTNARTFSSEMEYNDFAICSKGEKDTSDKDGNHDNQEHASGISSSKYCCDTGNHGSE  
 DFLLVLDCCDLSVLKVEEVDVAAVPGLEKFTRSPELTVVSEEFNRQIVRELVTLPANRWREQLDYYARCS  
 QAPGCGELLFDTDTWSLQIRKTGAQTADFPHAIRIWIYKTKPEGRSVTWTSDQSGRPCVYTVGSPINNRA  
 LFPCQEPVAMSTWQATVRAAASFVVLMSGENSAKPTQLWEECSSWYVVYVMPMPASTFTIIVGCVTEMK  
 METWSSNDLATERPFSPSEANFRHVGVCSHMEYPCRFQNASATTQEIIIPHRVAFVCLTGACQETLLRLI  
 PPCLSAHSLVLAHPFSRLDVLIVPANFSLGMASPHIMFLSQSILTGGNHLCGTRLCHEIAHAWFGLAI  
 GARDWTEEWLSEGFATHLEDVFWATAQQLAPYEAREQQELRACLRWRRLQDEMQCSPPEMQVLRFPVHVG  
 CSGSFS

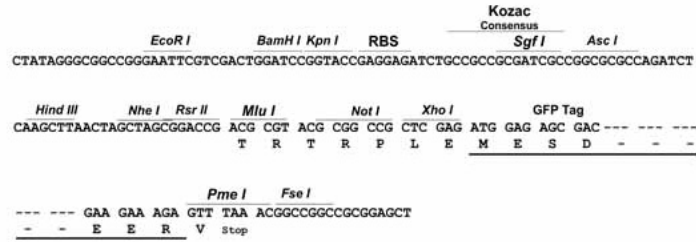
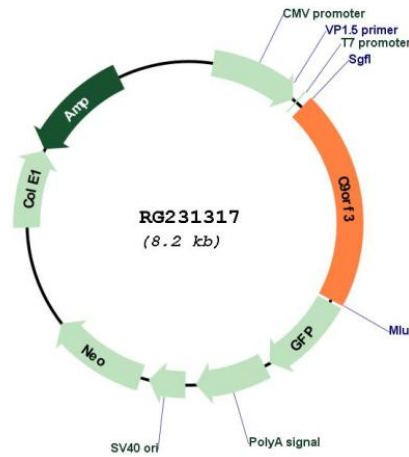
**TRTRPLE** - GFP Tag - V

**Restriction Sites:**

Sgfl-MluI

**Cloning Scheme:**

Cloning sites used for ORF Shutting:


**Plasmid Map:**

**ACCN:**                      NM\_001193331

**ORF Size:**                1698 bp

<b>OTI Disclaimer:</b>	The molecular sequence of this clone aligns with the gene accession number as a point of reference only. However, individual transcript sequences of the same gene can differ through naturally occurring variations (e.g. polymorphisms), each with its own valid existence. This clone is substantially in agreement with the reference, but a complete review of all prevailing variants is recommended prior to use. <a href="#">More info</a>
<b>OTI Annotation:</b>	This clone was engineered to express the complete ORF with an expression tag. Expression varies depending on the nature of the gene.
<b>Components:</b>	The ORF clone is ion-exchange column purified and shipped in a 2D barcoded Matrix tube containing 10ug of transfection-ready, dried plasmid DNA (reconstitute with 100 ul of water).
<b>Reconstitution Method:</b>	<ol style="list-style-type: none"><li>1. Centrifuge at 5,000xg for 5min.</li><li>2. Carefully open the tube and add 100ul of sterile water to dissolve the DNA.</li><li>3. Close the tube and incubate for 10 minutes at room temperature.</li><li>4. Briefly vortex the tube and then do a quick spin (less than 5000xg) to concentrate the liquid at the bottom.</li><li>5. Store the suspended plasmid at -20°C. The DNA is stable for at least one year from date of shipping when stored at -20°C.</li></ol>
<b>RefSeq:</b>	<a href="#">NM_001193331.3</a>
<b>RefSeq Size:</b>	3851 bp
<b>RefSeq ORF:</b>	1701 bp
<b>Locus ID:</b>	84909
<b>UniProt ID:</b>	<a href="#">Q8N6M6</a>
<b>Cytogenetics:</b>	9q22.32
<b>Protein Families:</b>	Protease
<b>Gene Summary:</b>	This gene encodes a member of the M1 zinc aminopeptidase family. The encoded protein is a zinc-dependent metallopeptidase that catalyzes the removal of an amino acid from the amino terminus of a protein or peptide. This protein may play a role in the generation of angiotensin IV. Alternate splicing results in multiple transcript variants. [provided by RefSeq, Oct 2010]