

Product datasheet for **RG231305**

SCHIP1 (IQCJ-SCHIP1) (NM_001197114) Human Tagged ORF Clone

Product data:

Product Type:	Expression Plasmids
Product Name:	SCHIP1 (IQCJ-SCHIP1) (NM_001197114) Human Tagged ORF Clone
Tag:	TurboGFP
Symbol:	IQCJ-SCHIP1
Mammalian Cell Selection:	Neomycin
Vector:	pCMV6-AC-GFP (PS100010)
E. coli Selection:	Ampicillin (100 ug/mL)



[View online »](#)

ORF Nucleotide Sequence:

>RG231305 representing NM_001197114
 Red=Cloning site Blue=ORF Green=Tags(s)

TTTTGTAATACGACTCACTATAGGGCGGCCGGGAATTCGTCGACTGGATCCGGTACCGAGGAGATCTGCC
 GCC**CGGATCGCC**

ATGCGTCTGGAAGAACTGAAAAGATTGCAGAATCCTCTAGAACAAGTTAATGATGAAAAATATTCATTTG
 AAAACATTCAGCGAGCATGGCGAGAGTACTGCAGCGGCAGGAGCCCTGGGGAAGAGGAGCCCGTCCCC
 ACCCTCTGTCTCCTCAGAGAAGCTGAGCAGCTCTGTCTCAGCATGAACACCTTCTCCGACAGCAGCACACCC
 GATTACCGAGAGGATGGGATGGATCTAGGCAGTGACGCCGGCAGCAGCAGCAGCAGCAGCAGCCGCGCCAGTT
 CACAGTCCAACCTCACCAAAGTGACCCCTTGTCCGAGTGCAAATCTTCATCGTCGCCGGGGGGCAGCCT
 GGACTTGGTGTCTGCCCTGGAGGACTATGAGGAGCCCTTCCCGTCTACCAGAAGAAGGTGATTGATGAG
 TGGGCGCCGGAGGAGGACGGGGAGGAGGAAGAGGAGGACGAGCGGACCAGCGAGGGTACCGGGATG
 ACCGCTCTCCGGCCCGGAACCGGGGACGTAAAGCGCCAGGACCCGAGCGGCGGGCGGGGGCAGGAG
 CGCCACCACCGCCATGCCGCCCGGTGCCAACGGCAACCTCCACCAGCAGACCCCCAGGACCTCAGG
 CACAATGGCAACGTGGTGGTGGCTGGCCGGCCGAGCTGTTCCCGGGCCCCCGCCGGGCGATCCAAAAGC
 CCCAGCCGGCTGGGGGCCGGCGCAGTGGCCGCGGCCCGGGCTGGGGGGCTCTGCCTTACGCCCCAGA
 CGGCGGGAGCTGCGTCCCCGAAGAGCCCCCGGTGCCACCTATGGATTGGGAGGCGCTGGAGAAGCATCTG
 GCCGGGCTGCAGTTCCGGGAGCAGGAGGTACGGAACCAGGGCCAGGCGAGGACCAACTCCACCTCCGCAC
 AGAAAAATGAGAGAGAGTCTATCAGACAGAAGTTGGCACTTGGAAAGCTTCTTTGATGATGGCCCAGGAAT
 TTATACCAGCTGTAGCAAAAGTGGGAAGCAAGCCTTCTCCGACTGCAGAGTGGGATGAACTTGCGAG
 ATATGCTTTGTCAACGACAGTGGCAGTGATAAGGACAGTGATGCTGATGACAGTAAGACTGAAACCAGCT
 TGGACACCCCTTGTCTCCCATGAGCAACAGAGTTCTTCTATCTGATAGAGACTGAAGAGGA
 GTCTGAATCCTTGGATGACATGGACTTCTTACAAGGCAAAAAGAAATTGCAAGCTGAAGCCAAAATGGCC
 CTTGCCATGGCCAAACCAATGGCCAAAATGCAAGTAGAAGTGGAGAAACGAACAGGAAAAAGTCTCCCG
 TCGCTGATCTTCTGCCACACATGCCTCATATAAGTGAATGCTTGTGAAAAGAAGTTAAAACCCACCGA
 CCTGAGAGACATGACTATTGGGCAGCTACAAGTATAGTCAATGATCTCCATTCCAGATAGAAAGCTTG
 AATGAAGAGTTGGTCCAGCTGCTTCTCATCCGAGATGAGCTGCACACAGAGCAGGATGCCATGCTGGTGG
 ACATTGAAGACTTGACCAGACATGCTGAAAGTCAGCAGAAGCACATGGCAGAGAAAATGCCTGCAAAG

ACGCGTACGCGGCCGCTCGAG – GFP Tag – GTTTAA

Protein Sequence:

>RG231305 representing NM_001197114
 Red=Cloning site Green=Tags(s)

MRLEELKRLQNPLEQVNDGKYSFENIQRAWREYLQRQEPLGKRSPSPSPVSSEKLSSSVSMNTFSDSSTP
 DYREDGMDLGSAGSSSSSRASSQSNSTKVTPCSECKSSSSPGGSLDLVSALEDYEFPVYQKKVIDE
 WAPEEDGEEEEEDERDQRYRDRSPAREPGDVSARTRSGGGGGRSATTAMPPPVPNGLHQHDPQDLR
 HNGNVVVAGRPSCSRGPRRAIQKQPAGGRRSGRGAAGGLCLQPPDGGTCVPEEPPVPPMDWEALEKHL
 AGLQFREQEVNRNQARTNSTSAQKNERESIRQKLALGSFFDDGPGIYTSCKSKGKPSLSRQLQSGMNLQ
 ICFVNDSGSDKSDADDSKTETSLDTPLSPMSKQSSSYSDRDTTEEESESLDDMDFLTRQKQLQAEAKMA
 LAMAKPMAKMQVEVEKQNRKSPVADLLPHMPHISECLMKRSLKPTDLRDMTIGQLQVIVNDLHSQIESL
 NEELVQLLLIRDELHTEQDAMLVDIEDLTRAESQKHMMAEKMPAK

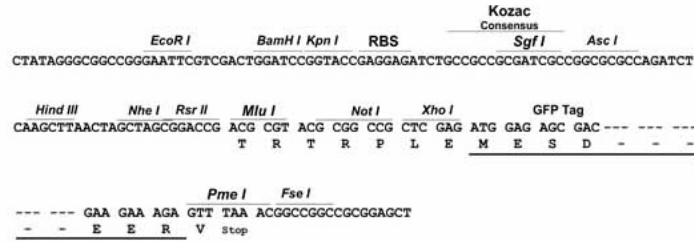
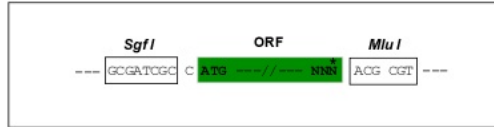
TRTRPLE – GFP Tag – V

Restriction Sites:

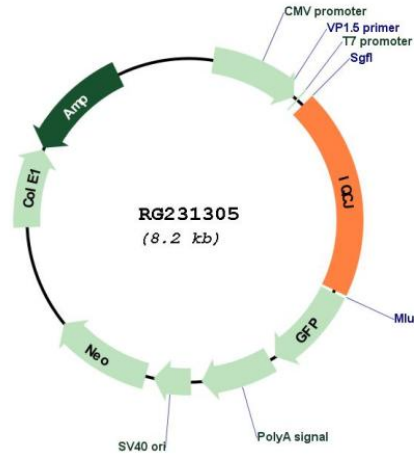
Sgfl-MluI

Cloning Scheme:

Cloning sites used for ORF Shuttling:



Plasmid Map:



ACCN: NM_001197114

ORF Size: 1608 bp

OTI Disclaimer: The molecular sequence of this clone aligns with the gene accession number as a point of reference only. However, individual transcript sequences of the same gene can differ through naturally occurring variations (e.g. polymorphisms), each with its own valid existence. This clone is substantially in agreement with the reference, but a complete review of all prevailing variants is recommended prior to use. [More info](#)

OTI Annotation: This clone was engineered to express the complete ORF with an expression tag. Expression varies depending on the nature of the gene.

Components: The ORF clone is ion-exchange column purified and shipped in a 2D barcoded Matrix tube containing 10ug of transfection-ready, dried plasmid DNA (reconstitute with 100 ul of water).

Reconstitution Method:

1. Centrifuge at 5,000xg for 5min.
2. Carefully open the tube and add 100ul of sterile water to dissolve the DNA.
3. Close the tube and incubate for 10 minutes at room temperature.
4. Briefly vortex the tube and then do a quick spin (less than 5000xg) to concentrate the liquid at the bottom.
5. Store the suspended plasmid at -20°C. The DNA is stable for at least one year from date of shipping when stored at -20°C.

RefSeq: [NM_001197114.1](#), [NP_001184043.1](#)

RefSeq Size: 2384 bp

RefSeq ORF: 1611 bp

Locus ID: 100505385

UniProt ID: [Q9P0W5](#)

Cytogenetics: 3q25.32-q25.33

Gene Summary: This locus represents naturally occurring read-through transcription from the neighboring IQ motif containing J (IQJ) and schwannomin interacting protein 1 (SCHIP1) genes. Alternative splicing results in multiple transcript variants that are composed of in-frame exons from each individual gene. The resulting fusion products are thought to be components of the multimolecular complexes of axon initial segments and nodes of Ranvier, and they may play a role in calcium-mediated responses. [provided by RefSeq, Oct 2010]