

## Product datasheet for **RG231271**

### CDADC1 (NM\_001193478) Human Tagged ORF Clone

#### Product data:

Product Type:	Expression Plasmids
Product Name:	CDADC1 (NM_001193478) Human Tagged ORF Clone
Tag:	TurboGFP
Symbol:	CDADC1
Synonyms:	bA103J18.1; NYD-SP15
Mammalian Cell Selection:	Neomycin
Vector:	pCMV6-AC-GFP (PS100010)
E. coli Selection:	Ampicillin (100 ug/mL)



[View online »](#)

**ORF Nucleotide Sequence:**

>RG231271 representing NM\_001193478  
 Red=Cloning site Blue=ORF Green=Tags(s)

TTTTGTAATACGACTCACTATAGGGCGGCCGGGAATTCGTCGACTGGATCCGGTACCGAGGAGATCTGCC  
 GCC**GCGATCGCC**

ATGAAAGAAGCTGGGCAGATGCAAAATCTGGAGAGCGCGAGGGCCGGCGGTTCAGTCAGCACCCAGACTG  
 GCAGCATGACCGGTCAGATACCAAGGCTTTCTAAAGTCAACCTTTTCACTCTGCTCAGCCTCTGGATGGA  
 GCTCTTTCCAGCAGAAGCCAGCGGCAAAAATCTCAGAAAAATGAAGAGGAAAGCATGGACCCTTAGGA  
 GATAATGAAGAGAGGACCAGAGTATCTACTGACAAAAGACAGGTAAGAGAACTGGTCTTGTGGTGGTGA  
 AAAACATGAAAATTGTTGGTCTCCACTGTTCTAGTGAAGATTTACATGCCGGCAGATTGCTCTTATTAA  
 ACATGGTCAAGGCTGAAAACTGTGATCTTTATTTTTCCAGAAAACCATGTTCTGCTTGTGAAAATG  
 ATTGTAATGCTGGAGTTAACCGAATTTCACTAGGCCTGCTGATCCAGAAATAAGTTTGTTCACGGAGG  
 CTTCTAGTTCTGAAGATGCAAAGTTAGATGCCAAAGCAGTGAAAAGATTGAAGTCAAACAGTCGGGCCA  
 TGTGTGTGCTTACTTCAACCTTTGGTGTGTTATATGGTGCAGTTTGTAGAGGAGACCTCTACAAATGT  
 GACTTTATTCAAAAAATTACAAAAACATTCGCCGATGCTAACACTGACTTTTATTATGAATGTAAACAAG  
 AAAGAATAAAAAGAAATGAAATGTTATTTTTGGTTTTCAAATGAAGAAATGCATAAGCAAATACTGATGAC  
 TATAGGTTTGGAGAACCTGTGTGAAAATCCATACTTTAGCAATCTAAGGCAAAACATGAAAGACCTTATC  
 TACTTTTGGCCACAGTAGCTTCCAGTGTGCCAACTTTAAACACTTCGGATTTTACCGTAGCAATCCAG  
 AACAGATTAATGAAATTCACAATCAAAGTTTGCACAGGAAATGCAAGGCACTGCATGGTTCAGGCCAG  
 GTTATTGGCATAATCGAAGTGAAGTGCATATAAACAGGAGTTGGGGCAGTCATTTGGCAGAAGGAAATCT  
 AGAAGTTGTGATGGAACAGGTGCCATGTACTTTGTAGGATGTGGTTACAATGCTTTTCTGTGGATCTG  
 AGTATGCTGACTTCCCACACATGGATGACAAGCAGAAAGACAGAGAAAATGAAGAAATTCAGATACATCAT  
 ACATGCGGAACAGAATGCCTTGACATTTAGGTGTCAAGAAATAAAACCAGAAGAAAGAAGCATGATTTTT  
 GTGACAAAAGTGCCCATGTGATGAGTGTGTACCTTTAATTAAGGTGCAGGCATAAAAAACAAATCTATGCAG  
 GAGATGTAGATGTTGGAAAAAGAAGGCAGACATCTTACATGAGGTTTCGGGGAGCTTGAAGGTGTTAG  
 CAAATTTACGTGGCAGCTGAATCCATCAGGAGCTTATGGTCTTGAACAAAATGAGCCTGAAAGGAGAGAA  
 AGT

**ACGCGTACGCGGCCGCTCGAG** - GFP Tag - GTTTAA

**Protein Sequence:**

>RG231271 representing NM\_001193478  
 Red=Cloning site Green=Tags(s)

MKEAGQMQLNESARAGRSVSTQTSMTGQIPRLSKVNLFTLLSLWMELFPAAEQRQKSQKNEEGKHGPLG  
 DNEERTRVSTDKRQVKRTGLVVVKNMKIVGLHCSSDLHAGQIALIKHGSRLKNCNDLYFSRKPCSACLKM  
 IVNAGVNRISYWPADPEISLLTEASSSEDAKLDKAVERLKSNSRAHVCVLLQPLVCYMQVFVEETS YKC  
 DFIQKITKTLPDANTDFYIECKQERIKEYEMLFLVSNEEMHKQILMTIGLENLCENPYFSNLRQNMKDLI  
 LLLLATVASSVPNFKHFGFYRSNPEQINEIHNQSLPQEIARHCMVQARLLAYRTEDHKTGVGAVIWAEGKS  
 RSCDGTGAMYFVCGYNAFPVGSEYADFPHMDDKQKDREIRKFRYIIHAEQNALTFRCQEIKPEERSMIF  
 VTKCPCDECVPLIKGAGIKQIYAGDVDVGKKKADISYMRFGELGVSKFTWQLNPSGAYGLEQNEPERRE  
 S

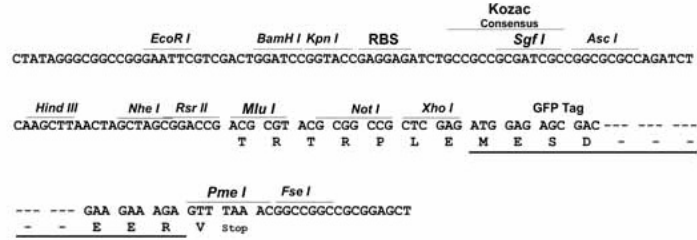
**TRTRPLE** - GFP Tag - V

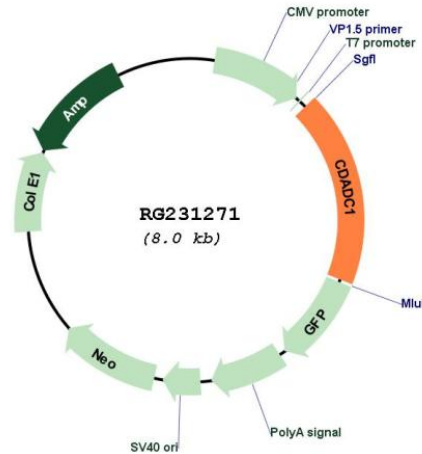
**Restriction Sites:**

Sgfl-Mlul

Cloning Scheme:

Cloning sites used for ORF Shutting:



**Plasmid Map:**


**ACCN:** NM\_001193478

**ORF Size:** 1473 bp

**OTI Disclaimer:** The molecular sequence of this clone aligns with the gene accession number as a point of reference only. However, individual transcript sequences of the same gene can differ through naturally occurring variations (e.g. polymorphisms), each with its own valid existence. This clone is substantially in agreement with the reference, but a complete review of all prevailing variants is recommended prior to use. [More info](#)

**OTI Annotation:** This clone was engineered to express the complete ORF with an expression tag. Expression varies depending on the nature of the gene.

**Components:** The ORF clone is ion-exchange column purified and shipped in a 2D barcoded Matrix tube containing 10ug of transfection-ready, dried plasmid DNA (reconstitute with 100 ul of water).

**Reconstitution Method:**

1. Centrifuge at 5,000xg for 5min.
2. Carefully open the tube and add 100ul of sterile water to dissolve the DNA.
3. Close the tube and incubate for 10 minutes at room temperature.
4. Briefly vortex the tube and then do a quick spin (less than 5000xg) to concentrate the liquid at the bottom.
5. Store the suspended plasmid at -20°C. The DNA is stable for at least one year from date of shipping when stored at -20°C.

**RefSeq:** [NM\\_001193478.2](#)

**RefSeq Size:** 2323 bp

**RefSeq ORF:** 1476 bp

**Locus ID:** 81602

**UniProt ID:** [Q9BWV3](#)

**Cytogenetics:** 13q14.2

**Gene Summary:** May play an important role in testicular development and spermatogenesis.  
[UniProtKB/Swiss-Prot Function]