

## Product datasheet for **RG231269**

### **YAP1 (NM\_001195044) Human Tagged ORF Clone**

#### **Product data:**

Product Type:	Expression Plasmids
Product Name:	YAP1 (NM_001195044) Human Tagged ORF Clone
Tag:	TurboGFP
Symbol:	YAP1
Synonyms:	COB1; YAP; YAP2; YAP65; YKI
Mammalian Cell Selection:	Neomycin
Vector:	pCMV6-AC-GFP (PS100010)
E. coli Selection:	Ampicillin (100 ug/mL)



[View online »](#)

**ORF Nucleotide Sequence:**

>RG231269 representing NM\_001195044  
 Red=Cloning site Blue=ORF Green=Tags(s)

TTTTGTAATACGACTCACTATAGGGCGGCCGGGAATTCGTCGACTGGATCCGGTACCGAGGAGATCTGCC  
 GCC**CGGATCGCC**

ATGGATCCCGGGCAGCAGCCGCCCTCAACCGGCCCCAGGGCCAAGGCAGCCGCTTCGCAGCCCC  
 CGCAGGGGCAGGGCCCGCGTCCGGACCGGGCAACCGCACCCGCGGACCCAGGCGGCGCCGAGGC  
 ACCCCCCGCCGGCATCAGATCGTGCACGTCCGCGGGACTCGGAGACCGACCTGGAGGCGCTTCAAC  
 GCCGTCATGAACCCCAAGACGGCCAACGTGCCCCAGACCGTGCCCATGAGGCTCCGGAAGCTGCCGACT  
 CCTTCTCAAGCCCGGAGCCAAATCCCACTCCCGACAGGCCAGTACTGATGCAGGACTGCAGGAGC  
 CCTGACTCCACAGCATGTTGAGCTCATTCTCTCCAGCTTCTCTGCAGTTGGGAGCTGTTTCTCTGGG  
 AACTGACCCCCACTGGAGTAGTCTCTGGCCAGCAGCTACACCCACAGCTCAGCATCTTCGACAGTCTT  
 CTTTTGAGATACCTGATGATGTACCTCTGCCAGCAGGTTGGGAGATGGCAAAGACATCTTCTGGTCAGAG  
 ATACTTCTTAAATCACATCGATCAGACAACAACATGGCAGGACCCAGGAAGGCCATGCTGTCCCAGATG  
 AACGTCACAGCCCCACCACTCCACAGTGCAGCAGAATATGATGAACTCGGCTTCAGGTCCTCTTCTCTG  
 ATGGATGGGAACAAGCCATGACTCAGGATGGAGAAATTTACTATATAAACCATAGAACAAGACCACCTC  
 TTGGCTAGACCCAAGGCTTGACCCTCGTTTTGCCATGAACCAGAGAATCAGTCAGAGTGCTCCAGTGAAA  
 CAGCCACCACCCCTGGCTCCCCAGAGCCACAGGGAGGCGTCA TGGGTGGCAGCAACTCCAACCAGCAGC  
 AACAGATGCGACTGCAGCAACTGCAGATGGAGAAGGAGAGGCTGCGGCTGAAACAGCAAGAAGCTGCTTCG  
 GCAGGAGTTAGCCCTGCGTAGCCAGTTACCAACTGGAGCAGGATGGTGGGACTCAAAATCCAGTGTCT  
 TCTCCCGGATGTCTCAGGAATTGAGAACAATGACGACCAATAGCTCAGATCCTTCTTAAACAGTGGCA  
 CCTATCACTCTCGAGATGAGAGTACAGACAGTGGACTAAGCATGAGCAGCTACAGTGTCCCTGAAACCC  
 AGATGACTTCTGAAACAGTGTGGATGAGATGGATACAGGTGATACTATCAACCAAGCACCCCTGCCCTCA  
 CAGCAGAACCCTTCCAGACTACCTTGAAGCCATTCTGGGACAAATGTGGACCTTGAACACTGGAAG  
 GAGATGGAATGAACATAGAAGGAGAGGAGCTGATGCCAAGTCTGCAGGAAGCTTTGAGTTCTGACATCCT  
 TAATGACATGGAGTCTGTTTTGGCTGCCACCAAGCTAGATAAAGAAAGCTTTCTTACATGGTTA

**ACGCGTACGCGGCCGCTCGAG** - GFP Tag - GTTTAA

**Protein Sequence:**

>RG231269 representing NM\_001195044  
 Red=Cloning site Green=Tags(s)

MDPGQQPPPQPAPQGQGGPPSQPPQGQGGPPSGPGQPAPAATQAAPQAPPAGHQIVHVRGDSETDLEALFN  
 AVMNPKTANVPQTVPMRLRKLPSFFKPPPEPKSHSRQASTDAGTAGALTPQHVRHSSPASLQLGAVSPG  
 TLTPTGTVVSGPAATPTAQHLRQSSFEIPDDVPLPAGWEMAKTSSGQRYFLNHIDQTTTWQDPRKAMLSQM  
 NVTAPTSPPVQQNMNSASGPLPDGWEQAMTQDGEIYYINHKNTTSWLDPRLDPRFAMNQRI SQSAPVK  
 QPPPLAPQSPQGGVMGGSNSNQQQMRLQQLQMEKERLRLLKQELLRQELALRSQLPTLEQDGGTQNPVS  
 SPGMSQELRTMTTNSDPFLNSGTYHSRDESTDSGLSMSSYSVPRTPDDFLNSVDEMDTGDTINQSTLPS  
 QQRNRPDYLEAIPGTNVDLGTLEGDMNIEGEELMPSLQEALSSDILNDMESVLAATKLDKESFTWL

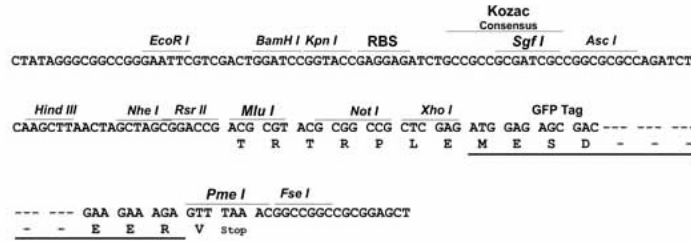
**TRTRPLE** - GFP Tag - V

**Restriction Sites:**

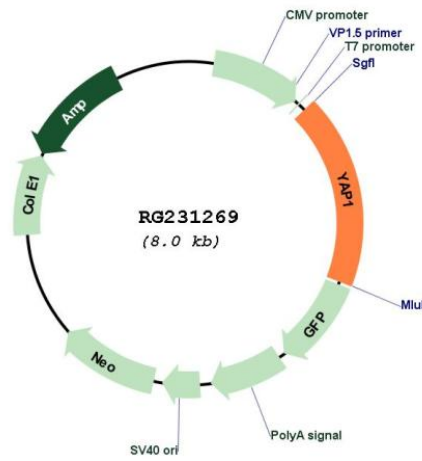
Sgfl-MluI

Cloning Scheme:

Cloning sites used for ORF Shutting:



Plasmid Map:



ACCN: NM\_001195044  
 ORF Size: 1464 bp

<b>OTI Disclaimer:</b>	<p>Due to the inherent nature of this plasmid, standard methods to replicate additional amounts of DNA in E. coli are highly likely to result in mutations and/or rearrangements. Therefore, OriGene does not guarantee the capability to replicate this plasmid DNA. Additional amounts of DNA can be purchased from OriGene with batch-specific, full-sequence verification at a reduced cost. Please contact our customer care team at <a href="mailto:custsupport@origene.com">custsupport@origene.com</a> or by calling 301.340.3188 option 3 for pricing and delivery.</p> <p>The molecular sequence of this clone aligns with the gene accession number as a point of reference only. However, individual transcript sequences of the same gene can differ through naturally occurring variations (e.g. polymorphisms), each with its own valid existence. This clone is substantially in agreement with the reference, but a complete review of all prevailing variants is recommended prior to use. <a href="#">More info</a></p>
<b>OTI Annotation:</b>	<p>This clone was engineered to express the complete ORF with an expression tag. Expression varies depending on the nature of the gene.</p>
<b>Components:</b>	<p>The ORF clone is ion-exchange column purified and shipped in a 2D barcoded Matrix tube containing 10ug of transfection-ready, dried plasmid DNA (reconstitute with 100 ul of water).</p>
<b>Reconstitution Method:</b>	<ol style="list-style-type: none"><li>1. Centrifuge at 5,000xg for 5min.</li><li>2. Carefully open the tube and add 100ul of sterile water to dissolve the DNA.</li><li>3. Close the tube and incubate for 10 minutes at room temperature.</li><li>4. Briefly vortex the tube and then do a quick spin (less than 5000xg) to concentrate the liquid at the bottom.</li><li>5. Store the suspended plasmid at -20°C. The DNA is stable for at least one year from date of shipping when stored at -20°C.</li></ol>
<b>RefSeq:</b>	<a href="#">NM_001195044.2</a>
<b>RefSeq Size:</b>	5348 bp
<b>RefSeq ORF:</b>	1467 bp
<b>Locus ID:</b>	10413
<b>UniProt ID:</b>	<a href="#">P46937</a>
<b>Cytogenetics:</b>	11q22.1
<b>Protein Families:</b>	Druggable Genome
<b>Gene Summary:</b>	<p>This gene encodes a downstream nuclear effector of the Hippo signaling pathway which is involved in development, growth, repair, and homeostasis. This gene is known to play a role in the development and progression of multiple cancers as a transcriptional regulator of this signaling pathway and may function as a potential target for cancer treatment. Alternative splicing results in multiple transcript variants encoding different isoforms. [provided by RefSeq, Aug 2013]</p>