

Product datasheet for **RG231251**

SERINC2 (NM_001199038) Human Tagged ORF Clone

Product data:

Product Type:	Expression Plasmids
Product Name:	SERINC2 (NM_001199038) Human Tagged ORF Clone
Tag:	TurboGFP
Symbol:	SERINC2
Synonyms:	FKSG84; PRO0899; TDE2; TDE2L
Mammalian Cell Selection:	Neomycin
Vector:	pCMV6-AC-GFP (PS100010)
E. coli Selection:	Ampicillin (100 ug/mL)



[View online »](#)

ORF Nucleotide Sequence:

>RG231251 representing NM_001199038
 Red=Cloning site Blue=ORF Green=Tags(s)

TTTTGTAATACGACTCACTATAGGGCGGCCGGGAATTCGTCGACTGGATCCGGTACCGAGGAGATCTGCC
 GCC**CGGATCGCC**

ATGGACGGGAGGATGATGAGAAGCATGAGGCTGAGAGAGGAGGAGTCACCCGGACCCAGCCACACAGCGT
 CCTGCCTCTGCGGCTCTGCCCCCTGCATCCTGTGCAGCTGCTGCCCGCCAGCCGCAACTCCACCGTGAG
 CCGCCTCATCTTCACGTTCTTCTCTTCTGGGGTGCTGGTGTCCATCATTATGCTGAGCCCGGGCGTG
 GAGAGTCAGTCTACAAGCTGCCCTGGGTGTGTGAGGAGGGGGCCGGGATCCCCACCGTCTGCAGGGCC
 ACATCGACTGTGGCTCCCTGCTTGGCTACCGCGCTGTCTACCGCATGTGCTTCGCCACGGCGGCCTTCTT
 CTTCTTTTTACCCTGCTCATGCTCTGCGTGAGCAGCAGCCGGGACCCCGGGCTGCCATCCAGAATGGG
 TTTTGGTCTTTAAGTTCCTGATCCTGGTGGCCCTCACCGTGGTGCCTTCTACATTCTGACGGCTCT
 TCACCAACATCTGGTCTACTTCGGCGTCTGGGCTCCTTCTCTTCATCCTCATCCAGCTGGTGTCTGCT
 CATCGACTTTGCGCACTCCTGGAACCAGCGGTGGCTGGCAAGGCCGAGGAGTGGATTCCCGTGCCTGG
 TACGCAGGCCTCTTCTTCTCACTCTCCTTCTACTTGTGTGCATCGCGGCCGTGGCGCTGATGTTCA
 TGTACTACACTGAGCCCAGCGGCTGCCACGAGGGCAAGGTCTTATCAGCCTCAACCTCACCTTCTGTGT
 CTGCGTGTCCATCGCTGTCTGCTGCCAAGGTCCAGGACGCCAGCCAACTCGGGTCTGCTGCAGGCC
 TCGGTCATCACCTCTACACCATGTTTGTACCTGGTCAGCCCTATCCAGTATCCCTGAACAGAAATGCA
 ACCCCATTGCAACCCAGCTGGGCAACGAGACAGTTGTGGCAGGCCCGAGGGCTATGAGACCCAGTG
 GTGGGATGCCCGAGCATTGTGGCCCTCATCATCTTCTCCTGTGCACCCCTTTCATCAGTCTGCCTCC
 TCAGACCACCGGAGGTGAACAGCCTGATGCAGACCGAGGAGTGGCCACCTATGCTAGACGCCACACAGC
 AGCAGCAGCAGGTGGCAGCCTGTGAGGGCCGGCCCTTTGACAACGAGCAGGACGGCGTCACTACAGCTA
 CTCTTCTTCCACTTCTGCCTGGTGTGGCCCTCACTGCAGTCTGATGACGCTACCAACTGGTACAAG
 CCCGGTGAACCCGAAGATGATCAGCAGTGGACCGCCGTGGGTGAAGATCTGTGCCAGCTGGGCAG
 GGCTGCTCCTCTACTGTGGACCCTGGTAGCCCACTCCTCTGCGCAACCGCGACTTCAGC

ACGCGTACGCGGCCGCTCGAG – GFP Tag – GTTTAA

Protein Sequence:

>RG231251 representing NM_001199038
 Red=Cloning site Green=Tags(s)

MDGRMMRSMRLREEESPGSHTASCLCGSAPCILCSCCPASRNSTVSRIFTFLLFLGVLVSIIMLSPGV
 ESQLYKLPWVCEEGAGIPTVLQGHIDCGSLLGYRAVYRMCFAAAFFFTLLMLCVSSSRDPRAAIQNG
 FWFKFLILVGLTVGAFYIPDGSFTNIWFYFGVVSFLFILIQLVLLIDFAHSWNQRWLKAEEDSRAW
 YAGLFFFLLFYLLSIAAVALMFMYYTEPSGHEGKVFISLNLTFVCVSVIAAVLPKVQDAQPNGLLQA
 SVITLYTMFVTSALSSIQEKCNPHLPTQLGNETVVAGPEGYETQWWDAPSIVGLIIFLLCTLFISLRS
 SDHRQVNSLMQTEECPPMLDATQQQQVAACEGRAFDNEQDGVITYSFFHFCLVLASLHVMMTLTNWYK
 PGETRKMISTWTAVWVKICASWAGLLLWLTLVAPLLLNRNDFS

TRTRPLE – GFP Tag – V

Restriction Sites:

Sgfl-MluI

Cloning Scheme:


ACCN: NM_001199038

ORF Size: 1392 bp

OTI Disclaimer: The molecular sequence of this clone aligns with the gene accession number as a point of reference only. However, individual transcript sequences of the same gene can differ through naturally occurring variations (e.g. polymorphisms), each with its own valid existence. This clone is substantially in agreement with the reference, but a complete review of all prevailing variants is recommended prior to use. [More info](#)

OTI Annotation: This clone was engineered to express the complete ORF with an expression tag. Expression varies depending on the nature of the gene.

Components: The ORF clone is ion-exchange column purified and shipped in a 2D barcoded Matrix tube containing 10ug of transfection-ready, dried plasmid DNA (reconstitute with 100 ul of water).

Reconstitution Method:

1. Centrifuge at 5,000xg for 5min.
2. Carefully open the tube and add 100ul of sterile water to dissolve the DNA.
3. Close the tube and incubate for 10 minutes at room temperature.
4. Briefly vortex the tube and then do a quick spin (less than 5000xg) to concentrate the liquid at the bottom.
5. Store the suspended plasmid at -20°C. The DNA is stable for at least one year from date of shipping when stored at -20°C.

RefSeq: [NM_001199038.2](#)

RefSeq Size: 2210 bp

RefSeq ORF: 1395 bp

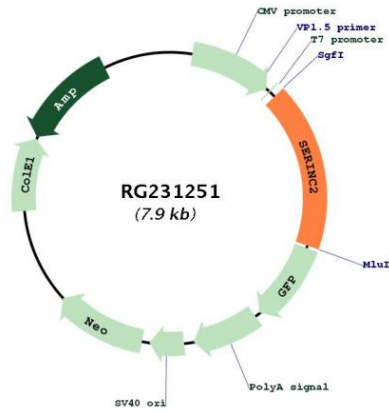
Locus ID: 347735

UniProt ID: [Q96SA4](#)

Cytogenetics: 1p35.2

Protein Families: Transmembrane

Product images:



Circular map for RG231251