

Product datasheet for **RG231249**

SERINC2 (NM_018565) Human Tagged ORF Clone

Product data:

Product Type:	Expression Plasmids
Product Name:	SERINC2 (NM_018565) Human Tagged ORF Clone
Tag:	TurboGFP
Symbol:	SERINC2
Synonyms:	FKSG84; PRO0899; TDE2; TDE2L
Mammalian Cell Selection:	Neomycin
Vector:	pCMV6-AC-GFP (PS100010)
E. coli Selection:	Ampicillin (100 ug/mL)



[View online »](#)

ORF Nucleotide Sequence:

>RG231249 representing NM_018565
 Red=Cloning site Blue=ORF Green=Tags(s)

TTTTGTAATACGACTCACTATAGGGCGGCCGGGAATTCGTCGACTGGATCCGGTACCGAGGAGATCTGCC
 GCC**CGGATCGCC**

ATGGGAGCGGAGGAGCCCGGACTTTCTTAGCTGCCCTCGAGTGAGCGGGCGTCTGCCTCTGCGGCT
 CTGCCCCCTGCATCCTGTGCAGCTGCTGCCCCGCCAGCCGCAACTCCACGTGAGCCGCCTCATCTTCAC
 GTTCTTCTCTTCTGGGGGTGCTGGTGTCCATCATTATGCTGAGCCCGGGCGTGAGAGTCACTCTAC
 AAGCTGCCCTGGGTGTGTGAGGAGGGGGCCGGGATCCCCACCGTCTGCAGGGCCACATCGACTGTGGCT
 CCCTGCTTGGCTACCGCGCTGTCTACCGCATGTGCTTCGCCACGGCGGCCTTCTTCTTTTCCACCT
 GCTCATGCTCTGCGTGAGCAGCAGCCGGGACCCCGGGCTGCCATCCAGAATGGGTTTTGGTTCTTTAAG
 TTCCTGATCCTGGTGGGCTCACCGTGGTGCCTTCTACATTCTGACGGCTCCTCACCAACATCTGGT
 TCTACTTCGGCGTCGTGGGCTCCTTCTTCTCATCCTCATCCAGCTGGTGTCTCATCGACTTTGCGCA
 CTCTGGAACCAGCGGTGGCTGGCAAGGCCGAGGAGTGGGATCCCGTGCCTGGTACGAGGCCTCTTC
 TTCTTCACTCTCCTTCTACTTGTGTGATCGCGGCCGTGGCGCTGATGTTTCACTACTACACTGAGC
 CCAGCGGTGCCACGAGGCAAGGTCTTATCAGCCTCAACCTCACCTTCTGTGTCTGCGTGTCCATCGC
 TGCTGTCTGCCAAGGTCCAGGACGCCAGCCAACTCGGGTCTGCTGCAGGCCTCGGTATCACCCCTC
 TACACCATGTTTGTACCTGGTCAGCCCTATCCAGTATCCCTGAACAGAAATGCAACCCCATTTGCCAA
 CCCAGCTGGGCAACGAGACAGTTGTGGCAGGCCCGAGGGCTATGAGACCCAGTGGTGGGATGCCCGAG
 CATTGTGGGCTCATCATCTTCTCCTGTGCACCTTTCATCAGTCTGCGCTCCTCAGACCACCGGCAG
 GTGAACAGCCTGATGCAGACCGAGGAGTCCCACCTATGCTAGACGCCACACAGCAGCAGCAGGAGTGG
 CAGCCTGTGAGGGCCGGGCTTTGACAACGAGCAGGACGGCGTCACTACAGTACTCTTCTTCCACTT
 CTGCCTGGTGTGGCCTCACTGCAGTCACTGATGACGCTCACCAACTGGTACAAGCCGGTGAGACCCGG
 AAGATGATCAGCACGTGGACCGCGTGTGGTGAAGATCTGTGCCAGCTGGGAGGGCTGCTCCTTACC
 TGTGGACCCTGGTAGCCCACTCCTCTGCGCAACCGGACTTCAGC

ACGCGTACGCGGCCGCTCGAG – GFP Tag – GTTTAA

Protein Sequence:

>RG231249 representing NM_018565
 Red=Cloning site Green=Tags(s)

MGAEGAPDFLSCPVRRRASCLCGSAPCILCSCCPASRNSTVSRLIFTFLLFLGVLVSIIMLSPGVESQLY
 KLPWVCEEAGIPTVLQGHIDCGSLLGYRAVYRMCFAAFAFFFTLLMLCVSSSRDPRAAIQNGFWFFK
 FLILVGLTVGAFYIPDGSFTNIWFYFGVVSFLFILIQLVLLIDFAHSWNQRWLGAEECDSDRAWYAGLF
 FFTLLFYLLSIAAVALMFMYYTEPSGCHEGKVFISLNLTFVCVSIAAVLPKVQDAQPNSGLLQASVITL
 YTMFVTWSALSSIPEQKCNPHLPTQLGNETVVAGPEGYETQWWDAPSIVGLIIFLLCTLFISLRSSDHRQ
 VNLSLMQTEECPPMLDATQQQQVAACEGRAFDNEQDGVTYSYFFHFCLVLASLHVMMTLTNWYKPGETR
 KMISTWTAVWVKICASWAGLLLYLWTLVAPLLLRNDFS

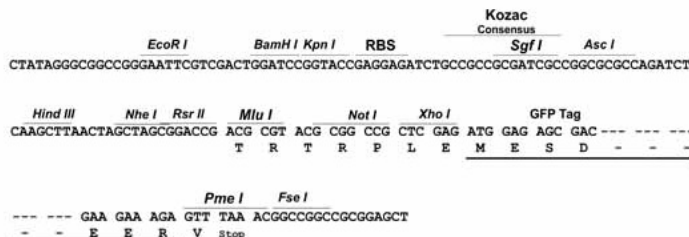
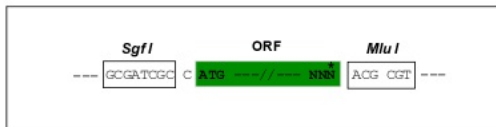
TRTRPLE – GFP Tag – V

Restriction Sites:

SgfI-MluI

Cloning Scheme:

Cloning sites used for ORF Shutting:


ACCN: NM_018565

ORF Size: 1377 bp

OTI Disclaimer: The molecular sequence of this clone aligns with the gene accession number as a point of reference only. However, individual transcript sequences of the same gene can differ through naturally occurring variations (e.g. polymorphisms), each with its own valid existence. This clone is substantially in agreement with the reference, but a complete review of all prevailing variants is recommended prior to use. [More info](#)

OTI Annotation: This clone was engineered to express the complete ORF with an expression tag. Expression varies depending on the nature of the gene.

Components: The ORF clone is ion-exchange column purified and shipped in a 2D barcoded Matrix tube containing 10ug of transfection-ready, dried plasmid DNA (reconstitute with 100 ul of water).

Reconstitution Method:

1. Centrifuge at 5,000xg for 5min.
2. Carefully open the tube and add 100ul of sterile water to dissolve the DNA.
3. Close the tube and incubate for 10 minutes at room temperature.
4. Briefly vortex the tube and then do a quick spin (less than 5000xg) to concentrate the liquid at the bottom.
5. Store the suspended plasmid at -20°C. The DNA is stable for at least one year from date of shipping when stored at -20°C.

RefSeq: [NM_018565.3](#), [NP_061035.2](#)
RefSeq Size: 2123 bp

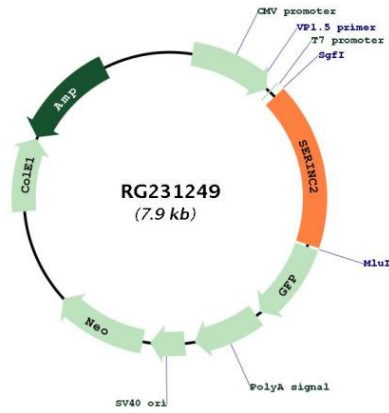
RefSeq ORF: 1380 bp

Locus ID: 347735

UniProt ID: [Q96SA4](#)
Cytogenetics: 1p35.2

Protein Families: Transmembrane

Product images:



Circular map for RG231249