

Product datasheet for **RG231241**

Dermokine (DMKN) (NM_001190347) Human Tagged ORF Clone

Product data:

Product Type:	Expression Plasmids
Product Name:	Dermokine (DMKN) (NM_001190347) Human Tagged ORF Clone
Tag:	TurboGFP
Symbol:	Dermokine
Synonyms:	UNQ729; ZD52F10
Mammalian Cell Selection:	Neomycin
Vector:	pCMV6-AC-GFP (PS100010)
E. coli Selection:	Ampicillin (100 ug/mL)



[View online »](#)

ORF Nucleotide Sequence:

>RG231241 representing NM_001190347
 Red=Cloning site Blue=ORF Green=Tags(s)

TTTTGTAATACGACTCACTATAGGGCGGCCGGAATTCGTCGACTGGATCCGGTACCGAGGAGATCTGCC
 GCC**CGGATCGCC**

ATGAAGTTCAGGGGCCCTGGCCTGCCTCCTGCTGGCCCTCCTGCTGGGAGTGGGGAGGCTGGCCCC
 TGCAGAGCGGAGAGGAAAGCACTGGGACAAATATTGGGGAGGCCCTTGGACATGGCTGGGAGACGCCCT
 GAGCGAAGGGGTGGGAAAGGCCATTGGCAAAGAGGCCGAGGGGAGCTGGCTCTAAAGTCAGTAGAGCC
 CTTGGCCAAGGGACCAGAGAAGCAGTTGGCACTGGAGTCAAGCAGGTTCCAGGCTTTGGCGTAGCAGATG
 CTTTGGGCAACAGGGTCGGGGAAGCAGCCCATGCTCTGGGAAACTGGGCACGAGATTGGCAGACAGGC
 AGAAGATGTCATTGACACGGAGCAGATGCTGTCCGCGGCTCCTGGCAGGGGTGCCTGGCCACAATGGT
 GCTTGGGAAACTTCTGGAGGCCATGGCATCTTTGGCTCTCAAGGTGGCCTTGGAGGCCAGGGCCAGGGCA
 ATCCTGGAGGCTGGGGACTCCGTGGGTCCACGGATACCCCGAAACTCAGCAGGCGAGCTTTGGAATGAA
 TCCTCAGGGAGCTCCCTGGGGTCAAGGAGGCAATGGAGGGCCACCAAACCTTTGGGACCAACTCAGGGA
 GCTGTGGCCAGCTGGCTATGTTTCAAGTGAAGGAGCCAGCAACCAAGGATGAAGGGTGCACGAATCCCCAC
 CATCTGGCTCAGGTGGAGGCTCCAGCAACTCTGGGGATCCAGCACCGGCTCCTCCTCCGGCAACCACGG
 TGGGAGCGCGGAGGAAATGGACATAAACCCGGGTGTGAAAAGCCAGGGAATGAAGCCCGCGGGAGCGGG
 GAATCTGGGATTCAGGGGCAAGGGTCGAGCTGGGGCAGTGGAGGAGGTGACGCTGTTGGTGGAGTCAATA
 CTGTGAAGTCTGAGACGCTCCTGGGATGTTTAACTTTGACACTTTCTGGAAGAATTTTAAATCCAAGCT
 GGGTTTCACTCACTGGGATGCCATAAACAAGAACCAGTCCCAGCCAGCAGCCGAGCCCTCCTCTAC
 TTCAGCCGACTCTGGGAGGATTTCAAACAGAACAACCTCTTCTCACTGGAAGCAATTTGAGGGTG
 CGGACCGTCACTGCAGAAACGTGCAGGCAGAGCCGATCAGCCGGGTGCAGGATGGCAGGAGGTGGC
 AGCTGTAAGTTCAGAACTACAATTACAACCAGCATGGTATCCCACTGCCTATGGTGGGAAAGTACTCA
 GTCAAGACCCCTGCAAGGGGGAGTCTCACCTTCTCCTCGGCTTCCCGGTGCAACTGGCCTGCTGC
 AGTGGGTGAAGTTTTGG

AG**CGGACCG**ACGCGTACGCGGCCGCTCGAG - GFP Tag - GTTTAA

Protein Sequence:

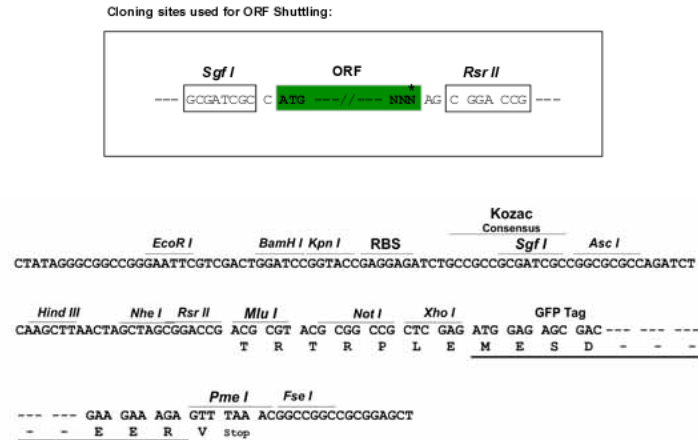
>RG231241 representing NM_001190347
 Red=Cloning site Green=Tags(s)

MKFQGPLACLLALCLGSGEAGPLQSGEESTGTNIGEALGHGLGDALSEGVGKAIGKEAGGAAGSKVSEA
 LGQGTREAVGTGVRQVPFGVADALGNRVGEAAHALGNTGHEIGRQAEDVIRHGADAVRGSWQGVPHNG
 AWETSGGHGIFGSQGLGGQGNPGLGTPWVHGYPGNSAGSFGMNPQAPWGQGGNGGPPNFGTNTQG
 AVAQPGYGSVRASNQNEGCTNPPPSGSGGSSNSGGSSSTGSSSGNHGSGGGNGHKPGCEKPGNEARGSG
 ESGIQQGSSWGSGGDAVGGVNTVNSETSPGMFNFDTFWKNFKSKLGFINWDAINKNQVPPPSTRALLY
 FSRLWEDFKQNTPFLNWKAIIEGADASSLQKRAGRADQPGAGWQEVAAVTSKNYNYNQHA YPTAYGGKYS
 VKTPAKGGVSPSSASRVQPGLLQWVKFW

SGP**TRRRLE** - GFP Tag - V

Restriction Sites:

Sgfl-RsrII

Cloning Scheme:


ACCN: NM_001190347

ORF Size: 1347 bp

OTI Disclaimer: The molecular sequence of this clone aligns with the gene accession number as a point of reference only. However, individual transcript sequences of the same gene can differ through naturally occurring variations (e.g. polymorphisms), each with its own valid existence. This clone is substantially in agreement with the reference, but a complete review of all prevailing variants is recommended prior to use. [More info](#)

OTI Annotation: This clone was engineered to express the complete ORF with an expression tag. Expression varies depending on the nature of the gene.

Components: The ORF clone is ion-exchange column purified and shipped in a 2D barcoded Matrix tube containing 10ug of transfection-ready, dried plasmid DNA (reconstitute with 100 ul of water).

Reconstitution Method:

1. Centrifuge at 5,000xg for 5min.
2. Carefully open the tube and add 100ul of sterile water to dissolve the DNA.
3. Close the tube and incubate for 10 minutes at room temperature.
4. Briefly vortex the tube and then do a quick spin (less than 5000xg) to concentrate the liquid at the bottom.
5. Store the suspended plasmid at -20°C. The DNA is stable for at least one year from date of shipping when stored at -20°C.

RefSeq: [NM_001190347.1](#), [NP_001177276.1](#)

RefSeq Size: 1865 bp

RefSeq ORF: 1350 bp

Locus ID: 93099

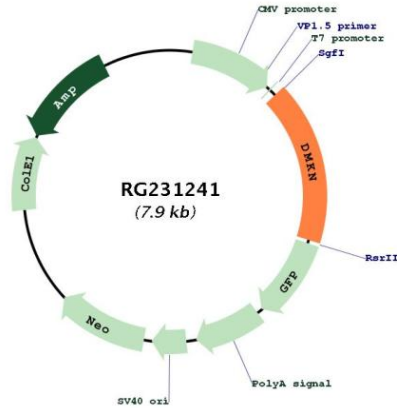
UniProt ID: [Q6E0U4](#)

Cytogenetics: 19q13.12

Gene Summary:

This gene is upregulated in inflammatory diseases, and it was first observed as expressed in the differentiated layers of skin. The most interesting aspect of this gene is the differential use of promoters and terminators to generate isoforms with unique cellular distributions and domain components. Alternatively spliced transcript variants encoding different isoforms have been identified for this gene. [provided by RefSeq, Jun 2010]

Product images:



Circular map for RG231241