

## Product datasheet for **RG231174**

### **TMEM184B (NM\_001195072) Human Tagged ORF Clone**

#### Product data:

**Product Type:** Expression Plasmids  
**Product Name:** TMEM184B (NM\_001195072) Human Tagged ORF Clone  
**Tag:** TurboGFP  
**Symbol:** TMEM184B  
**Synonyms:** C22orf5; FM08; HS5O6A; HSPC256  
**Mammalian Cell Selection:** Neomycin  
**Vector:** pCMV6-AC-GFP (PS100010)  
**E. coli Selection:** Ampicillin (100 ug/mL)  
**ORF Nucleotide Sequence:** >RG231174 representing NM\_001195072  
Red=Cloning site Blue=ORF Green=Tags(s)

TTTTGTAATACGACTCACTATAGGGCGCCGGGAATTCGTCGACTGGATCCGGTACCGAGGAGATCTGCC  
 GCCCGCATCGCC

ATGCACCTGCGCTGCTACAGCTGCCCAACGAGCAGCGCTACATCGTGCGCATCCTCTTCATCGTGCCCA  
 TCTACGCCTTTGACTCCTGGCTCAGCCTCCTCTTCCACCAACGACCAGTACTACGTGTACTTCGGCAC  
 CGTCCGCGACTGCTATGAGGCCCTGGTCATCTATAATTTCTGAGCCTGTGCTATGAGTACCTAGGAGGA  
 GAAAGTCCATCATGTCGGAGATCAGAGGAAAACCCATTGAGTCCAGCTGTATGTATGGCACCTGCTGCC  
 TCTGGGAAAGACTTATTCCATCGGATTTCTGAGGTTCTGCAAACAGGCCACCCTGCAGTTCTGTGTGGT  
 GAAGCCACTCATGGCGGTGAGCACTGTGGTCCTCCAGGCCTTCGCAAGTACCGGATGGGGACTTTGAC  
 GTCACCACTGGCTACCTCTACGTGACCATCATCTACAACATCTCCGTGAGCCTGGCCCTCTACGCCCTCT  
 TCCTCTTCTACTTCGCCACCCGGGAGCTGCTCAGCCCCTACAGCCCCGTCTCAAGTTCTTCATGGTCAA  
 GTCCGTGATCTTTCTTCTTCTGGCAAGGCATGCTCCTGGCCATCCTGGAGAAGTGTGGGGCCATCCCC  
 AAAATCCACTCGGCCCGGTGTCGGTGGGCGAGGGCACCCTGGCTGCCGGTACCAGGACTTCATCATCT  
 GTGTGGAGATGTTCTTTGCAGCCCTGGCCCTGCGGCACGCCTTCACTACAAGGTCTATGCTGACAAGAG  
 GCTGGACGCACAAGGCCGCTGTGCCCATGAAGAGCATCTCCAGCAGCTCAAGGAGACCATGAACCCG  
 CACGACATCGTGACAGGACCCATCCACAACCTTTCACCTGCCTACCAGCAGTACACGCAGCAGTCCACCC  
 TGGAGCCTGGGCCACCTGGCGTGGTGGCGCCACGGCCTCTCCGCTCCACAGCCTCAGTGGCGCCCG  
 CGACAACGAGAAGACTCTCTGCTCAGCTCTGATGATGAATTC

ACGCGTACGCGGCCGCTCGAG - GFP Tag - GTTTAA



[View online »](#)

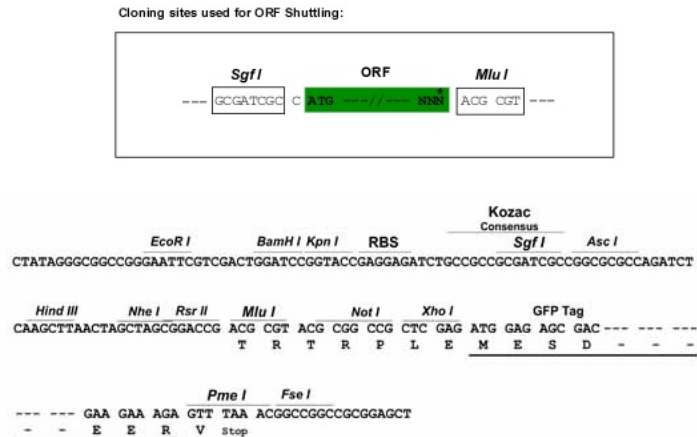
**Protein Sequence:** >RG231174 representing NM\_001195072  
 Red=Cloning site Green=Tags(s)

```
MHLRCYSCPNQRYIVRILFIVPIYAFDSWLSLLFFTNDQYVVYFGTVRDCYEALVIYNFLSLCYEYLGGE
SSIMSEIRGKPIESSCMYGTCLWGKTYSIGFLRFCKQATLQFCVVKPLMAVSTVVLQAFGKYRDLGDFD
VTSGYLYVTIINYISVSLALYALFLFYFATRELLSPYSPVLKFFMVKSVIFLSFWQGMLLAILEKCGAIP
KIH SARVSVGEGTVAAGYQDFIICVEMFFAALALRHAFYKVVYADKRLDAQGRCAPMKSISSSLKETMNP
HDIVQDAIHNFSPAYQYTTQSTLEPGPTWRGGAGHLSRSLSLSGARDNEKTLSSDDEF
```

TRTRPLE - GFP Tag - V

**Restriction Sites:** SgfI-MluI

**Cloning Scheme:**



**ACCN:** NM\_001195072

**ORF Size:** 1023 bp

**OTI Disclaimer:** The molecular sequence of this clone aligns with the gene accession number as a point of reference only. However, individual transcript sequences of the same gene can differ through naturally occurring variations (e.g. polymorphisms), each with its own valid existence. This clone is substantially in agreement with the reference, but a complete review of all prevailing variants is recommended prior to use. [More info](#)

**OTI Annotation:** This clone was engineered to express the complete ORF with an expression tag. Expression varies depending on the nature of the gene.

**Components:** The ORF clone is ion-exchange column purified and shipped in a 2D barcoded Matrix tube containing 10ug of transfection-ready, dried plasmid DNA (reconstitute with 100 ul of water).

**Reconstitution Method:**

1. Centrifuge at 5,000xg for 5min.
2. Carefully open the tube and add 100ul of sterile water to dissolve the DNA.
3. Close the tube and incubate for 10 minutes at room temperature.
4. Briefly vortex the tube and then do a quick spin (less than 5000xg) to concentrate the liquid at the bottom.
5. Store the suspended plasmid at -20°C. The DNA is stable for at least one year from date of shipping when stored at -20°C.

**RefSeq:** [NM\\_001195072.2](#)

**RefSeq Size:** 3730 bp

**RefSeq ORF:** 1026 bp

**Locus ID:** 25829

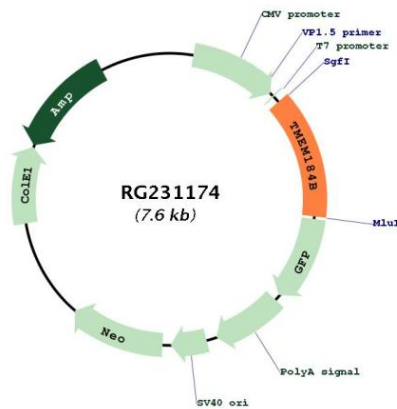
**UniProt ID:** [Q9Y519](#)

**Cytogenetics:** 22q13.1

**Protein Families:** Transmembrane

**Gene Summary:** May activate the MAP kinase signaling pathway.[UniProtKB/Swiss-Prot Function]

**Product images:**



Circular map for RG231174