

Product datasheet for **RG231173**

GPR35 (NM_001195381) Human Tagged ORF Clone

Product data:

Product Type:	Expression Plasmids
Product Name:	GPR35 (NM_001195381) Human Tagged ORF Clone
Tag:	TurboGFP
Symbol:	GPR35
Mammalian Cell Selection:	Neomycin
Vector:	pCMV6-AC-GFP (PS100010)
E. coli Selection:	Ampicillin (100 ug/mL)
ORF Nucleotide Sequence:	>RG231173 representing NM_001195381 Red=Cloning site Blue=ORF Green=Tags(s)

TTTTGTAATACGACTCACTATAGGGCGGCCGGAATTCGTCGACTGGATCCGGTACCGAGGAGATCTGCC
GCC**CGATCGCC**

ATGCTGAGTGGTTCCCGGGCTGTCCCACTCCACACCGTGGCAGTGAAGAGCTGCTGAAGTACATGCTTC
ATAGTCCTTGGCTCTCTGACCATGAATGGCACCTACAACACCTGTGGCTCCAGCGACCTCACCTGGCC
CCCAGCGATCAAGCTGGGCTTCTACGCCTACTTGGGCGTCTGCTGGTGTAGGCTGCTGCTCAACAGC
CTGGCGCTCTGGGTGTTCTGCTGCCGCATGCAGCAGTGGACGGAGACCCGCATCTACATGACCAACCTGG
CGGTGGCCGACCTCTGCCTGCTGTGCACCTTGCCTTCGTGCTGCACTCCCTGCGAGACACCTCAGACAC
GCCGCTGTGCCAGCTCTCCAGGGCATCTACCTGACCAACAGGTACATGAGCATCAGCCTGGTCACGGCC
ATCGCCGTGGACCGCTATGTGGCCGTGCCGCACCCGCTGCGTGCCCGGGCTGCGGTCCCCAGGCAGG
CTGCGGCCGTGTGCGCGTCTCTGGGTGCTGGTTCATCGGCTCCCTGGTGGCTCGCTGGCTCCTGGGGAT
TCAGGAGGGCGGCTTCTGCTTACAGGAGCACCCGGCACAATTTCAACTCCATGGCGTTCCCGCTGCTGGGA
TTCTACCTGCCCTGGCCGTGGTGGTCTTCTGCTCCCTGAAGGTGGTACTGCCCTGGCCAGAGGCCAC
CCACCGACGTGGGCAGGCAGAGGCCACCCGAAGGCTGCCCGCATGGTCTGGGCCAACCTCCTGGTGT
CGTGGTCTGCTTCTGCCCTGCAGTGGGGCTGACAGTGGCCTCGCAGTGGGCTGGAACGCTGTGCC
CTCCTGGAGACGATCCGTGCGCCCTGTACATAACCAGCAAGCTCTCAGATGCCAACTGCTCCTGGACG
CCATCTGCTACTACTACATGGCCAAGGAGTCCAGGAGGCGTCTGCACTGGCCGTGGCTCCCAGTGCTAA
GGCCACAAAAGCCAGGACTCTCTGTGCGTGACCCCTCGCC

ACGCGTACGCGGCCGCTCGAG - GFP Tag - GTTTAA



[View online »](#)

Protein Sequence: >RG231173 representing NM_001195381
Red=Cloning site Green=Tags(s)

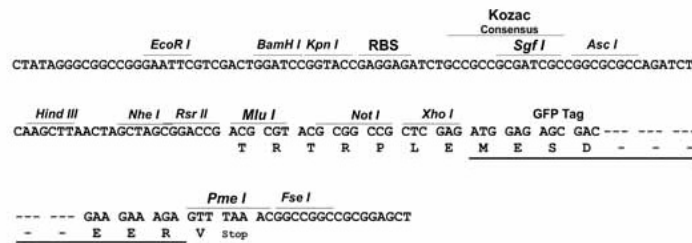
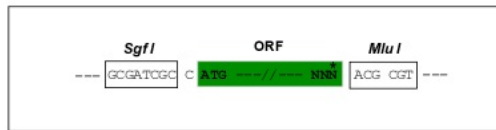
MLSGSRAVPTPHRGSEELLKYMLHSPCVSLTMNGTYNTCGSSDLTWPPAIKLGFYAYLGVLLVLGLLLNS
 LALWVFCRMQQWTETRIYMTNLAVADLCLLCTLPFVLHSLRDTSDTPLCQLSQGIYLTNRYMSISLVTA
 IAVDRYVAVRHPLRARGLRSPRQAAAVCAVLWVLVIGSLVARWLLGIQEGGFCFRSTRHNFNSMAFPLLG
 FYLPLAVVVFCSLKVVVTAQAQRPTDVGQAEATRKAARMVWANLLVFVVCFLPLHVGLTVRLAVGWNACA
 LLETIRRALYITSKLSDANCLDAICYYYMAKEFQEASALAVAPSAKAHKSQDSLQCVTLA

TRTRPLE - GFP Tag - V

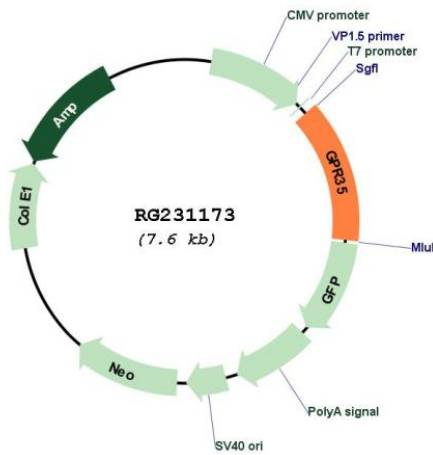
Restriction Sites: SgfI-MluI

Cloning Scheme:

Cloning sites used for ORF Shutting:



Plasmid Map:



ACCN: NM_001195381

ORF Size: 1020 bp

OTI Disclaimer:	The molecular sequence of this clone aligns with the gene accession number as a point of reference only. However, individual transcript sequences of the same gene can differ through naturally occurring variations (e.g. polymorphisms), each with its own valid existence. This clone is substantially in agreement with the reference, but a complete review of all prevailing variants is recommended prior to use. More info
OTI Annotation:	This clone was engineered to express the complete ORF with an expression tag. Expression varies depending on the nature of the gene.
Components:	The ORF clone is ion-exchange column purified and shipped in a 2D barcoded Matrix tube containing 10ug of transfection-ready, dried plasmid DNA (reconstitute with 100 ul of water).
Reconstitution Method:	<ol style="list-style-type: none">1. Centrifuge at 5,000xg for 5min.2. Carefully open the tube and add 100ul of sterile water to dissolve the DNA.3. Close the tube and incubate for 10 minutes at room temperature.4. Briefly vortex the tube and then do a quick spin (less than 5000xg) to concentrate the liquid at the bottom.5. Store the suspended plasmid at -20°C. The DNA is stable for at least one year from date of shipping when stored at -20°C.
RefSeq:	NM_001195381.2
RefSeq Size:	2293 bp
RefSeq ORF:	1023 bp
Locus ID:	2859
UniProt ID:	Q9HC97
Cytogenetics:	2q37.3
Protein Families:	Druggable Genome, GPCR, Transmembrane
Protein Pathways:	Neuroactive ligand-receptor interaction
Gene Summary:	Acts as a receptor for kynurenic acid, an intermediate in the tryptophan metabolic pathway. The activity of this receptor is mediated by G-proteins that elicit calcium mobilization and inositol phosphate production through G(qi/o) proteins.[UniProtKB/Swiss-Prot Function]