

Product datasheet for **RG231155**

Nck (NCK1) (NM_001190796) Human Tagged ORF Clone

Product data:

| | |
|---------------------------|--|
| Product Type: | Expression Plasmids |
| Product Name: | Nck (NCK1) (NM_001190796) Human Tagged ORF Clone |
| Tag: | TurboGFP |
| Symbol: | NCK1 |
| Synonyms: | NCK; nck-1; NCKalpha |
| Mammalian Cell Selection: | Neomycin |
| Vector: | pCMV6-AC-GFP (PS100010) |
| E. coli Selection: | Ampicillin (100 ug/mL) |
| ORF Nucleotide Sequence: | >RG231155 representing NM_001190796 Red=Cloning site Blue=ORF Green=Tags(s) |

TTTTGTAATACGACTCACTATAGGGCGGCCGGAATTCGTCGACTGGATCCGGTACCGAGGAGATCTGCC
GCC**CGATCGCC**

ATGGATTGGTTAAACGCTCTTTAAAGATTTTTTCAGCATTGGAAAAGTGAAAAGAAAACCTAGTGTGCCAG
ATTCTGCATCTCCTGCTGATGATAGTTTTGTTGACCCAGGGGAACGCTCTATGACCTCAACATGCCCGC
TTATGTGAAATTTAACTACATGGCTGAGAGAGAGGATGAATTATCATTGATAAAGGGGACAAAGGTGATC
GTCATGGAGAAATGCAGTATGGGTGGTGGCGTGGTAGCTACAATGGACAAGTTGGATGGTTCCTTCAA
ACTATGTAAGTGAAGAAGGTGACAGTCCCTTTGGGTGACCATGTGGTTCTCTGTCAGAGAAATTAGCAGC
AGTCGTCAATAACCTAAATACTGGGCAAGTGTTCATGTGGTACAGGCTCTTACCCATTAGCTCATCT
AATGATGAAGAACTTAATTTTCGAGAAAGGAGATGTAATGGATGTTATTGAAAAACCTGAAAATGACCCAG
AGTGGTGGAAATGCAGGAAGATCAATGGTATGGTGGTCTAGTACCAAAAACTATGTTACCGTTATGCA
GAATAATCCATTAACCTCAGGTTTGAACCATCACCTCCACAGTGTGATTACATTAGGCCTTCACTCACT
GGAAAGTTTGCTGGCAATCCTTGGTATTATGGCAAAGTCAACAGGCATCAAGCAGAAATGGCATTAAATG
AAAGAGGACATGAAGGGGATTTCTCATTTCGTGATAGTGAATCTTCGCCAAATGATTTCTCAGTATCACT
AAAAGCACAAGGGAAAAACAAGCATTTTAAAGTCCAACAAAAGAGACTGTCTACTGCATTGGGCAGCGT
AAATTCAGCACCATGGAAGAACTTGTAGAACATTACAAAAAGGCACCAATTTTACAAGTGAACAAGGAG
AAAAATTATATCTTGTCAAGCATTATCA

ACGCGTACGCGGCCGCTCGAG - GFP Tag - GTTTAA



[View online »](#)

Protein Sequence: >RG231155 representing NM_001190796
Red=Cloning site Green=Tags(s)

MDWLVNFKDFFSIGVKRKPSVPDSASPADDSFVDPGERLYDLNMPAYVKFNMAEREDELSLIKGTKVI
 VMEKCSDGWWRGSYNGQVGFPSNYVTEEGDSPLGDHVGSLSEKLAAVVNNLNTGQVLHVQALYPFSSS
 NDEELNFEKGDVMDVIEKPENDPEWVKCRKINGMVGLVPKNYVTVMQNNPLTSGLEPSPQCXYIRPSLT
 GKFAGNPWYYGKPTRHQAEMALNERGHEGDFLIRDSESSPNDFSVSLKAQGKNKHFVKVQLKETVYICIGQR
 KFSTMEELVEHYKKAPIFTSEQEKLYLVKHL

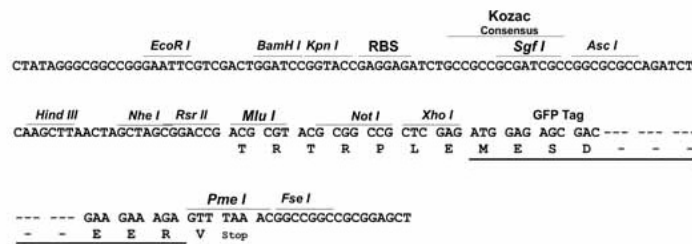
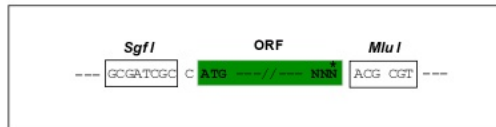
TRTRPLE - GFP Tag - V

Restriction Sites:

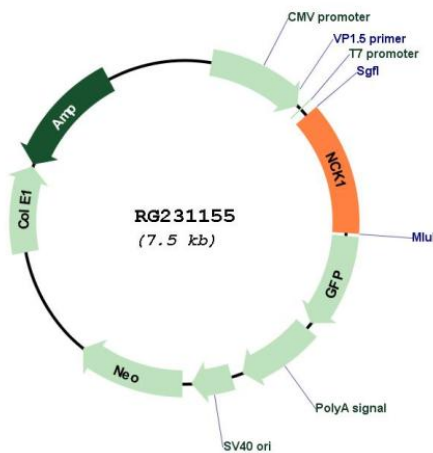
SgfI-MluI

Cloning Scheme:

Cloning sites used for ORF Shuttling:



Plasmid Map:



ACCN: NM_001190796

ORF Size: 939 bp

| | |
|-------------------------------|---|
| OTI Disclaimer: | The molecular sequence of this clone aligns with the gene accession number as a point of reference only. However, individual transcript sequences of the same gene can differ through naturally occurring variations (e.g. polymorphisms), each with its own valid existence. This clone is substantially in agreement with the reference, but a complete review of all prevailing variants is recommended prior to use. More info |
| OTI Annotation: | This clone was engineered to express the complete ORF with an expression tag. Expression varies depending on the nature of the gene. |
| Components: | The ORF clone is ion-exchange column purified and shipped in a 2D barcoded Matrix tube containing 10ug of transfection-ready, dried plasmid DNA (reconstitute with 100 ul of water). |
| Reconstitution Method: | <ol style="list-style-type: none">1. Centrifuge at 5,000xg for 5min.2. Carefully open the tube and add 100ul of sterile water to dissolve the DNA.3. Close the tube and incubate for 10 minutes at room temperature.4. Briefly vortex the tube and then do a quick spin (less than 5000xg) to concentrate the liquid at the bottom.5. Store the suspended plasmid at -20°C. The DNA is stable for at least one year from date of shipping when stored at -20°C. |
| RefSeq: | NM_001190796.3 |
| RefSeq Size: | 1725 bp |
| RefSeq ORF: | 942 bp |
| Locus ID: | 4690 |
| UniProt ID: | P16333 |
| Cytogenetics: | 3q22.3 |
| Protein Families: | Druggable Genome |
| Protein Pathways: | Axon guidance, ErbB signaling pathway, Pathogenic Escherichia coli infection, T cell receptor signaling pathway |
| Gene Summary: | The protein encoded by this gene is one of the signaling and transforming proteins containing Src homology 2 and 3 (SH2 and SH3) domains. It is located in the cytoplasm and is an adaptor protein involved in transducing signals from receptor tyrosine kinases to downstream signal recipients such as RAS. Alternatively spliced transcript variants encoding different isoforms have been found. [provided by RefSeq, Jun 2010] |