

Product datasheet for **RG231123**

CDRT15L2 (NM_001190790) Human Tagged ORF Clone

Product data:

Product Type:	Expression Plasmids
Product Name:	CDRT15L2 (NM_001190790) Human Tagged ORF Clone
Tag:	TurboGFP
Symbol:	CDRT15L2
Mammalian Cell Selection:	Neomycin
Vector:	pCMV6-AC-GFP (PS100010)
E. coli Selection:	Ampicillin (100 ug/mL)
ORF Nucleotide Sequence:	>RG231123 representing NM_001190790 Red=Cloning site Blue=ORF Green=Tags(s)

TTTTGTAATACGACTCACTATAGGGCGGCCGGAATTCGTCGACTGGATCCGGTACCGAGGAGATCTGCC
GCC**CGATCGCC**

ATGTTCTCCTGTTGCTTCCCCACTTCGAGAGGTTGCTGCTTCAGGAATGGAGGGAGTGAGAGCCTTTTCC
GACAATGCCGAAGAAGGCTCATCCCTCACCCAGACGCTGTGGCCCTTTGTAAGAAGGCGCACCCAGGT
ACCACAGGACAGCCCGGGCAGGCCCTAGCTGGCCAGGCCACACCAGAGATCCCATCGGGGCTGCCTCTG
CACATTGTCCTTGTCCAGGAGGAGATTCGGGAGCCCATGGAGGCACAGACACATGCTCCTGGTCCGTACG
CAGACATAGCAGCACTTGCAGCCAGGCTGTCGAGCCAAAGCCAGCATGGGAAGAGCCCTCCAGAGAG
AGCGCTGGAGGTGGAGGGAGCTCCAGCCAAGGACCAGCCAGCCAGGAGCTGCCTGAAATCATGGCACCT
ACTGTAGCCACTGGCCTTAATGCTGGAGCTGAAAACGTGGCTGGAGAGAGAAGTGGGAGGGAGGGGTGA
CAAGCACAGCCCCAGCCAGCAGATCCCATGCTGCCCTAGTCTGGGCATGGTGGCAAACATGGAGGCGG
AGACCAGGGCATTAGACTGGACTCCTGTACCTCGCTGGAGAGAGGCTTCTCATTGCGCCGAACCACA
GCCCTGCTGTCAGGGCCTGTTTATTGTGCTAATTCTGGTGGGTATATCTCTGTGAAGGTGATGCTCA
AGAGCATAAAACAAGGCTGGGAAGAAGAGTTCAGCAGCTCCTCCTGCTCAGACGCAATCTTCTCTCT
CCAGGCATGGAAGTGTGCTGCAACTGGGCATCCAGGCTGTTGCCCTAATGTGCTGCCCCGAACGGGC
TCT

ACGCGTACGCGGCCGCTCGAG - GFP Tag - GTTTAA



[View online »](#)

Protein Sequence: >RG231123 representing NM_001190790
Red=Cloning site Green=Tags(s)

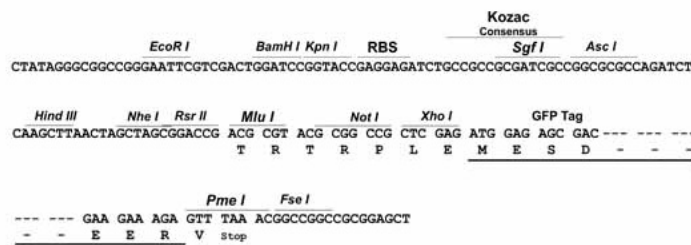
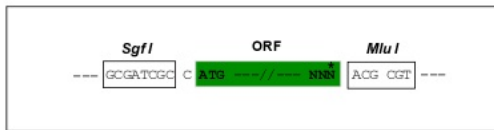
MFSCCFPTSRGCCFRNGGSESLFRQCRRRLIPHPRRLWPFVRRRTQVPQDSPGQALAGQATPEIPSGLPL
 HIVLVQEEIREPMEAQTHAPGPYADIAALAAPAVEPKPAWEPPPERALEVEGAPAKDQPSQELPEIMAP
 TVATGLNAGAENVAGERSGREGVTSTAPASRSHAAPSPGHGGKHGGDQGIQTGLLYLAGERLLSFAGTT
 ALLLQGLFIVLILVGYISVKVMLKSIKTRLGRRVPAAPPALRRNLLLQAWKVCVCNWSRLFAPNVLPRTS

TRTRPLE - GFP Tag - V

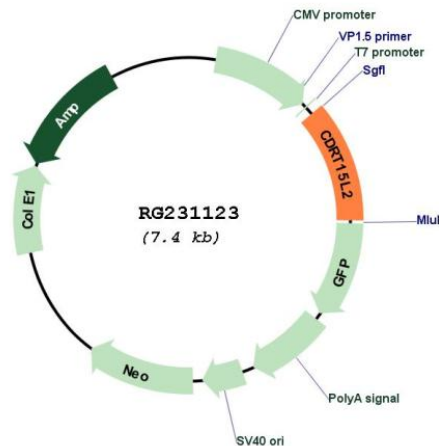
Restriction Sites: SgfI-MluI

Cloning Scheme:

Cloning sites used for ORF Shutting:



Plasmid Map:



ACCN: NM_001190790

ORF Size: 843 bp

OTI Disclaimer:	The molecular sequence of this clone aligns with the gene accession number as a point of reference only. However, individual transcript sequences of the same gene can differ through naturally occurring variations (e.g. polymorphisms), each with its own valid existence. This clone is substantially in agreement with the reference, but a complete review of all prevailing variants is recommended prior to use. More info
OTI Annotation:	This clone was engineered to express the complete ORF with an expression tag. Expression varies depending on the nature of the gene.
Components:	The ORF clone is ion-exchange column purified and shipped in a 2D barcoded Matrix tube containing 10ug of transfection-ready, dried plasmid DNA (reconstitute with 100 ul of water).
Reconstitution Method:	<ol style="list-style-type: none">1. Centrifuge at 5,000xg for 5min.2. Carefully open the tube and add 100ul of sterile water to dissolve the DNA.3. Close the tube and incubate for 10 minutes at room temperature.4. Briefly vortex the tube and then do a quick spin (less than 5000xg) to concentrate the liquid at the bottom.5. Store the suspended plasmid at -20°C. The DNA is stable for at least one year from date of shipping when stored at -20°C.
RefSeq:	NM_001190790.2
RefSeq Size:	1051 bp
RefSeq ORF:	846 bp
Locus ID:	256223
UniProt ID:	A8MXV6
Cytogenetics:	17p11.2
Protein Families:	Transmembrane