

Product datasheet for **RG231095**

C1orf93 (FAM213B) (NM_001195736) Human Tagged ORF Clone

Product data:

Product Type:	Expression Plasmids
Product Name:	C1orf93 (FAM213B) (NM_001195736) Human Tagged ORF Clone
Tag:	TurboGFP
Symbol:	C1orf93
Synonyms:	C1orf93; FAM213B
Mammalian Cell Selection:	Neomycin
Vector:	pCMV6-AC-GFP (PS100010)
E. coli Selection:	Ampicillin (100 ug/mL)
ORF Nucleotide Sequence:	>RG231095 representing NM_001195736 Red=Cloning site Blue=ORF Green=Tags(s)

TTTTGTAATACGACTCACTATAGGGCGGCCGGAATTCGTCGACTGGATCCGGTACCGAGGAGATCTGCC
GCC**CGATCGCC**

ATGAGCCGGGAGCGGGATCCAGGAGCGAGGAGCCGGGAGCGGGAAACAGGGAGTCGGGAGCCGGGAAC
CAGGGCTGGCAGCGCCGCCATGAGCACGGTGGACCTTGCTCGCGTGGGCGGTGCATCCTGAAGCATGC
GGTGACCGGGGAGCCGTGGAGCTGCGGAGCCTGTGGCGGAGCACGCGTGCCTGGTGGCCGGGCTGCGG
CGCTTCGGGTGCGTGGTGTGCCGCTGGATCGCCAGGACCTCAGCAGCCTTGCTGGGCTCCTGGACCAAC
ACGGCGTGCCTGGTGGGCGTAGGGCCGAGGCCCTGGGTCTGCAGGAGTTCCTGGACGGCGACTACTT
CGCGGGAGAGCTCTACCTGGATGAGAGCAAGCAGCTTTACAAGGAGCTAGGCTTCAAGCGGCTCTGGACC
CAGGCTTCTCCGGAGTTTGGCCAAGCGACCTGGTGTCTTCGCAGGTACAACAGCCTGAGCATCCTCCAG
CAGCTCTGGGGAAGCCCGTGCCTGATGTGGCTGCCAAGGCCAAGGCTGTTGGCATCCAGGGGAAGCTTGT
TGGGACCTGCTGCAGAGCGGAGGGCTGCTGGTGGTCAGCAAAGGTGGTATAAAGTGCTCCTGCATTTT
GTCCAGAAGTCCCAGGCGACTACGTCCCAAGGAGCACATCCTGCAGGTCTGGCATCTCTGCGGAGG
TCTGTGCCAGCGACCCGCTCAGTGTGACAGAGAGTG

AG**CGGACCG**ACGCGTACGCGGCCGCTCGAG - GFP Tag - GTTTAA



[View online »](#)

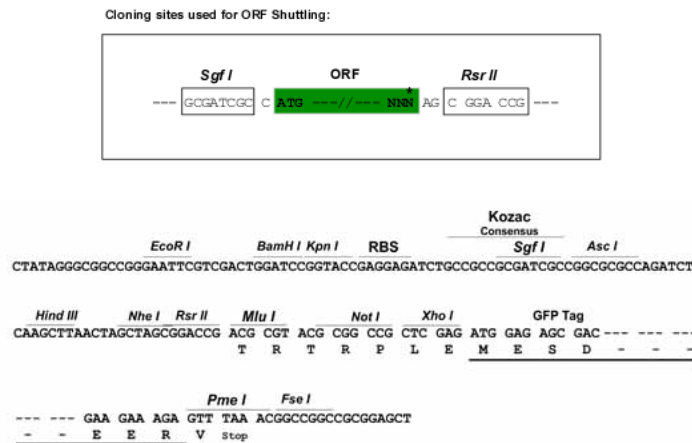
Protein Sequence: >RG231095 representing NM_001195736
Red=Cloning site Green=Tags(s)

MSRERGRSEEPGAGNRESGSRPGLAAAAMSTVDLARVACILKHAVTGEAVELRSLWREHACVVAGLR
 RFGCVVCRWIAQDLSSLAGLLDQHGVRLLVGVGPEALGLQEFLDGDYFAGELYLDESKQLYKELGFKRLWT
 QASPEFGQATWCLRRYNSLSILPAALGKPVVDVAAKAKAVGIQGNLSGDLQLQSGLLVVSXGGDKVLLHF
 VQKSPGDYVPKEHILQVLGISAECASDPPQCDREV

SGPTRRRLE - GFP Tag - V

Restriction Sites: SgfI-RsrII

Cloning Scheme:



ACCN: NM_001195736

ORF Size: 738 bp

OTI Disclaimer: The molecular sequence of this clone aligns with the gene accession number as a point of reference only. However, individual transcript sequences of the same gene can differ through naturally occurring variations (e.g. polymorphisms), each with its own valid existence. This clone is substantially in agreement with the reference, but a complete review of all prevailing variants is recommended prior to use. [More info](#)

OTI Annotation: This clone was engineered to express the complete ORF with an expression tag. Expression varies depending on the nature of the gene.

Components: The ORF clone is ion-exchange column purified and shipped in a 2D barcoded Matrix tube containing 10ug of transfection-ready, dried plasmid DNA (reconstitute with 100 ul of water).

Reconstitution Method:

1. Centrifuge at 5,000xg for 5min.
2. Carefully open the tube and add 100ul of sterile water to dissolve the DNA.
3. Close the tube and incubate for 10 minutes at room temperature.
4. Briefly vortex the tube and then do a quick spin (less than 5000xg) to concentrate the liquid at the bottom.
5. Store the suspended plasmid at -20°C. The DNA is stable for at least one year from date of shipping when stored at -20°C.

RefSeq: [NM_001195736.1](#), [NP_001182665.3](#)

RefSeq Size: 2845 bp

RefSeq ORF: 651 bp

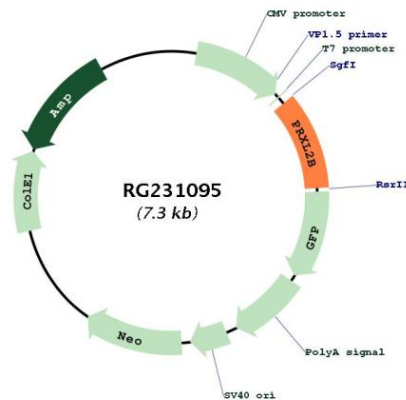
Locus ID: 127281

UniProt ID: [Q8TBF2](#)

Cytogenetics: 1p36.32

Gene Summary: Catalyzes the reduction of prostaglandin-ethanolamide H(2) (prostamide H(2)) to prostamide F(2alpha) with NADPH as proton donor. Also able to reduce prostaglandin H(2) to prostaglandin F(2alpha) (By similarity).[UniProtKB/Swiss-Prot Function]

Product images:



Circular map for RG231095