

Product datasheet for **RG231076**

NDUFA11 (NM_001193375) Human Tagged ORF Clone

Product data:

Product Type: Expression Plasmids
Product Name: NDUFA11 (NM_001193375) Human Tagged ORF Clone
Tag: TurboGFP
Symbol: NDUFA11
Synonyms: B14.7; CI-B14.7; MC1DN14
Mammalian Cell Selection: Neomycin
Vector: pCMV6-AC-GFP (PS100010)
E. coli Selection: Ampicillin (100 ug/mL)
ORF Nucleotide Sequence: >RG231076 representing NM_001193375
Red=Cloning site Blue=ORF Green=Tags(s)

TTTTGTAATACGACTCACTATAGGGCGGCCGGAATTCGTCGACTGGATCCGGTACCGAGGAGATCTGCC
GCC**CGATCGCC**

ATGGCGCCGAAGGTTTTTCGTCAGTACTGGGATATCCCCGATGGCACCGATTGCCACCGCAAAGCCTACA
GCACCACCAGTATTGCCAGCGTCGCTGGCCTGACCGCGCTGCCTACAGAGTCACACTCAATCCTCCGGG
CACCTTCCTTGAAGGAGTGGCTAAGGTTGGACAATACAGTTCACTGCAGCTGCTGTGGGGCCGTGTT
GGCCTCACACCTGCATCAGCGCCCATGTCGCGAGAAGCCGACGACCCCTGAACACTTCTCGGTG
GCTGCGCCGAGGCCTGACTCTGGGAGCACGAAGACAGGATCTCACTGTGTTGTGCAGGCTGGTCTCAA
ACTCCTGGCCTCGAGCAGTCTCACACCTCAGCCTCCCAGAGTGTGGGATTATAGGCATGAGCCACTGT
GTACAGAGATTCTGGGTCCCTTCTCCAGCGCCTGCCTCGAAGTCTCTCTGGAGAGACAGATGTCC
ACGCGTGTTCAGCACAAGGGGGCATGCAACAGCTCAGGGTCACGTCCACTTCCGGAGCTGGGTGCCCC
GGCCTCGGGCTCCCTGAGAAAGGGCGGACACCCACCCCGCACCAGAGGGGCAGGGCCCTGACACCT
GTCCAAGCCCTAATAGAGTCATTGTTAAACACTCTGGGTTCGAACCCAGAAGT

AG**CGGACCG**ACGCGTACGCGGCCGCTCGAG - GFP Tag - GTTTAA



[View online »](#)

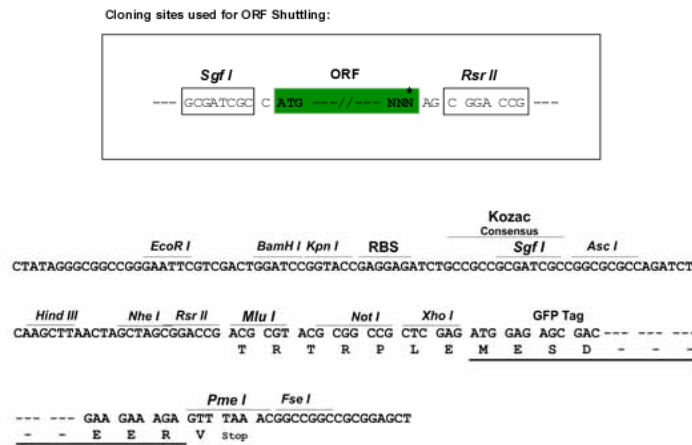
Protein Sequence: >RG231076 representing NM_001193375
 Red=Cloning site Green=Tags(s)

MAPKVFRQYWDIPDGTDCRKAYSTTSIASVAGLTAAAYRVTLNPPGTFLEGVAKVGQYTFATAAVGAVF
 GLTTCISAHVREKPDPLNYFLGGCAGGLTLGARKTGSHCVVQAGLKLLASSPHTSASQSAGIIGMSHC
 VQRFWVPSSSACLEVLSGESTDVHACSSSTRGACNSSGSRPLPEL GARASGSLRKGGHHTHPAPRGAGALTP
 VQALIESLLNLTGNSPRT

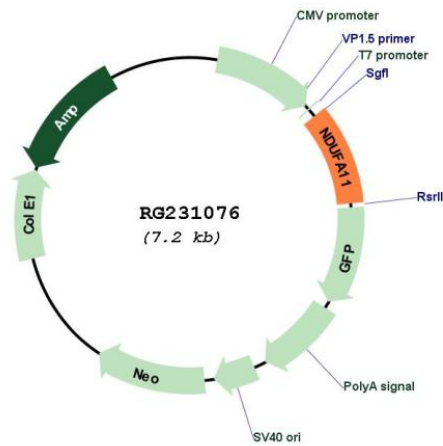
SGPTRRRLE - GFP Tag - V

Restriction Sites: SgfI-RsrII

Cloning Scheme:



Plasmid Map:



ACCN: NM_001193375

ORF Size: 684 bp

OTI Disclaimer:	The molecular sequence of this clone aligns with the gene accession number as a point of reference only. However, individual transcript sequences of the same gene can differ through naturally occurring variations (e.g. polymorphisms), each with its own valid existence. This clone is substantially in agreement with the reference, but a complete review of all prevailing variants is recommended prior to use. More info
OTI Annotation:	This clone was engineered to express the complete ORF with an expression tag. Expression varies depending on the nature of the gene.
Components:	The ORF clone is ion-exchange column purified and shipped in a 2D barcoded Matrix tube containing 10ug of transfection-ready, dried plasmid DNA (reconstitute with 100 ul of water).
Reconstitution Method:	<ol style="list-style-type: none">1. Centrifuge at 5,000xg for 5min.2. Carefully open the tube and add 100ul of sterile water to dissolve the DNA.3. Close the tube and incubate for 10 minutes at room temperature.4. Briefly vortex the tube and then do a quick spin (less than 5000xg) to concentrate the liquid at the bottom.5. Store the suspended plasmid at -20°C. The DNA is stable for at least one year from date of shipping when stored at -20°C.
RefSeq:	NM_001193375.2
RefSeq Size:	2633 bp
RefSeq ORF:	687 bp
Locus ID:	126328
UniProt ID:	Q86Y39
Cytogenetics:	19p13.3
Protein Families:	Transmembrane
Protein Pathways:	Metabolic pathways, Oxidative phosphorylation
Gene Summary:	This gene encodes a subunit of the membrane-bound mitochondrial complex I. Complex I is composed of numerous subunits and functions as the NADH-ubiquinol reductase of the mitochondrial electron transport chain. Mutations in this gene are associated with severe mitochondrial complex I deficiency. Alternate splicing results in multiple transcript variants. [provided by RefSeq, Oct 2010]