

## Product datasheet for **RG231039**

### **C1orf93 (FAM213B) (NM\_001195740) Human Tagged ORF Clone**

#### Product data:

**Product Type:** Expression Plasmids  
**Product Name:** C1orf93 (FAM213B) (NM\_001195740) Human Tagged ORF Clone  
**Tag:** TurboGFP  
**Symbol:** C1orf93  
**Synonyms:** C1orf93; FAM213B  
**Mammalian Cell Selection:** Neomycin  
**Vector:** pCMV6-AC-GFP (PS100010)  
**E. coli Selection:** Ampicillin (100 ug/mL)  
**ORF Nucleotide Sequence:** >RG231039 representing NM\_001195740  
 Red=Cloning site Blue=ORF Green=Tags(s)

TTTTGTAATACGACTCACTATAGGGCGGCCGGAATTCGTCGACTGGATCCGGTACCGAGGAGATCTGCC  
 GCC**CGATCGCC**

ATGAGCCGGGAGCGGGGATCCAGGAGCGAGGAGCCGGGAGCGGGGAACAGGGAGTCGGGGAGCCGGGAAC  
 CAGGGCTGGCAGCGCCGCCATGAGCACGGTGGACCTTGCTCGCGTGGCGCGTGCATCTGAAGCATGC  
 GGTGACCGGGGAGCCGTGGAGCTGCGGAGCCTGTGGCGGAGCACGCGTGCCTGGTGGCCGGGCTGCGG  
 CGCTTCGGGTGCGTGGTGTGCCGCTGGATCGCCAGGACCTCAGCAGCCTTGCTGGGCTCCTGGACCAAC  
 ACGGCGTGCCTGGTGGCGTAGGGCCGAGGCCCTGGGTCTGCAGGAGTTCCTGGACGGCGACTACTT  
 CGCGGGAGAGCTCTACCTGGATGAGAGCAAGCAGCTTTACAAGGAGCTAGGCTTCAAGCGGTACAACAGC  
 CTGAGCATCCTCCAGCAGCTCTGGGGAAGCCCGTGCCTGATGTGGCTGCCAAGAAGTCCCAGGCGACT  
 ACGTCCCCAAGGAGCACATCCTGCAGGTCTGGGCATCTCTGCGGAGGTCTGTGCCAGCGACCCGCCTCA  
 GTGTGACAGAGAGGTG

AG**CGGACCG**ACGCGTACGCGGCCGCTCGAG - GFP Tag - GTTTAA

**Protein Sequence:** >RG231039 representing NM\_001195740  
 Red=Cloning site Green=Tags(s)

MSRERGSRSEEPGAGNRESGSRPGLAAAAAMSTVDLARVGACILKHAVTGEAVELRSLWREHACVVAGLR  
 RFGCVVCRWIAQDLSSLAGLLDQHGVRLVGVGPEALGLQEFLDGDYFAGELYLDESKQLYKELGFKRYNS  
 LSILPAALGKPVVDVAKKSPGDYVPKEHILQVLGISAEVCASDPPQCDREV

SGP**TRRRLE** - GFP Tag - V

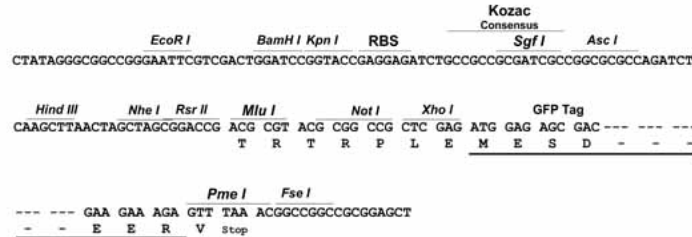
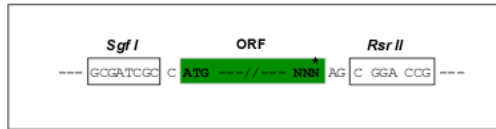
**Restriction Sites:** Sgfl-RsrII



[View online »](#)

**Cloning Scheme:**

Cloning sites used for ORF Shuttling:


**ACCN:** NM\_001195740

**ORF Size:** 576 bp

**OTI Disclaimer:** The molecular sequence of this clone aligns with the gene accession number as a point of reference only. However, individual transcript sequences of the same gene can differ through naturally occurring variations (e.g. polymorphisms), each with its own valid existence. This clone is substantially in agreement with the reference, but a complete review of all prevailing variants is recommended prior to use. [More info](#)

**OTI Annotation:** This clone was engineered to express the complete ORF with an expression tag. Expression varies depending on the nature of the gene.

**Components:** The ORF clone is ion-exchange column purified and shipped in a 2D barcoded Matrix tube containing 10ug of transfection-ready, dried plasmid DNA (reconstitute with 100 ul of water).

**Reconstitution Method:**

1. Centrifuge at 5,000xg for 5min.
2. Carefully open the tube and add 100ul of sterile water to dissolve the DNA.
3. Close the tube and incubate for 10 minutes at room temperature.
4. Briefly vortex the tube and then do a quick spin (less than 5000xg) to concentrate the liquid at the bottom.
5. Store the suspended plasmid at -20°C. The DNA is stable for at least one year from date of shipping when stored at -20°C.

**RefSeq:** [NM\\_001195740.1](#), [NP\\_001182669.3](#)
**RefSeq Size:** 2683 bp

**RefSeq ORF:** 489 bp

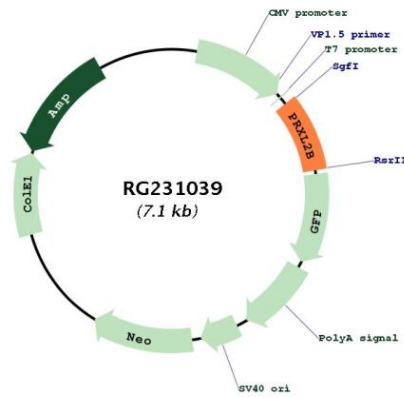
**Locus ID:** 127281

**UniProt ID:** [Q8TBF2](#)
**Cytogenetics:** 1p36.32

**Gene Summary:**

Catalyzes the reduction of prostaglandin-ethanolamide H(2) (prostamide H(2)) to prostamide F(2alpha) with NADPH as proton donor. Also able to reduce prostaglandin H(2) to prostaglandin F(2alpha) (By similarity).[UniProtKB/Swiss-Prot Function]

**Product images:**



Circular map for RG231039