

Product datasheet for **RG231025**

RERG (NM_001190726) Human Tagged ORF Clone

Product data:

Product Type: Expression Plasmids
Product Name: REG (NM_001190726) Human Tagged ORF Clone
Tag: TurboGFP
Symbol: REG
Mammalian Cell Selection: Neomycin
Vector: pCMV6-AC-GFP (PS100010)
E. coli Selection: Ampicillin (100 ug/mL)
ORF Nucleotide Sequence: >RG231025 representing NM_001190726
Red=Cloning site **Blue**=ORF **Green**=Tags(s)

TTTTGTAATACGACTCACTATAGGGCGGCCGGAATTCGTCGACTGGATCCGGTACCGAGGAGATCTGCC
GCC**CGATCGCC**

ATGGCTAAAAGTGC GGAGGTCAA CTGGCAATATTTGGGAGAGCAGGCGTGGCAAGTCAGAATCAACCT
ACCGACACCAAGCAACCATCGATGATGAAGTTGTTCCATGGAGATACTAGACACTGCTGGTCAGGAAGA
TACCATTAGAGGGAGGGGCACATGCGATGGGGGAAGGCTTTGTGCTGGTCTACGACATTACTGACCGA
GGAAGTTTTGAGGAAGTGTGCCACTTAAGAACATCCTAGATGAGATCAAAAAGCCCAAGAATGTGACTC
TCATCTTGGTTGAAACAAAGCTGACTTGACCCTCCAGGCAGGTTAGCACAGAAGAAGGAGAGAAGCT
GGCCACAGAATTGGCTTGTGCTTTTACGAGTGTCTGCCTGCACTGGAGAAGGGAACATCACAGAGATA
TTCTATGAATTGTGTCGAGAGGTGCGTCGCCGGAGGATGGTGCAGGGCAAGACGAGGCGACGCAGCTCCA
CCACGCATGTCAAGCAAGCCATTAACAAGATGCTCACAAAATCAGTAGT

ACGCGTACGCGGCCGCTCGAG - GFP Tag - GTTTAA

Protein Sequence: >RG231025 representing NM_001190726
Red=Cloning site **Green**=Tags(s)

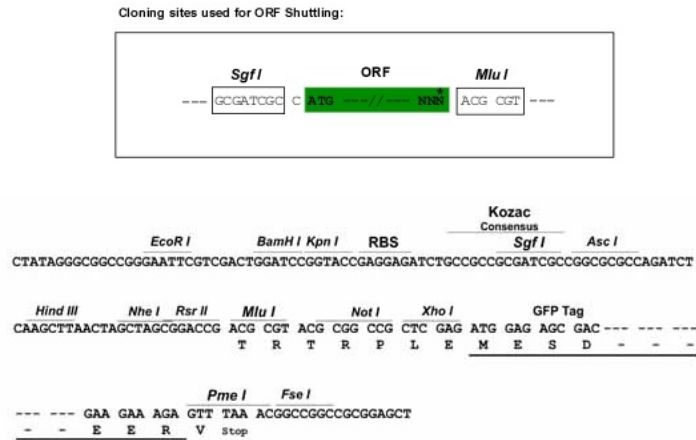
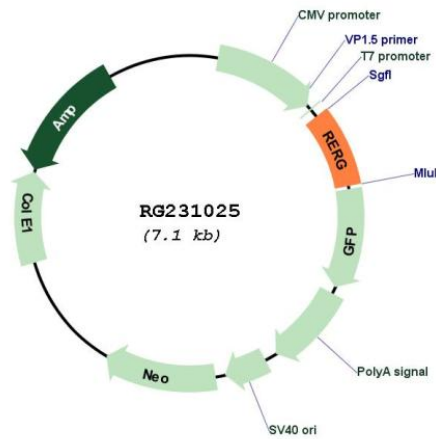
MAKSAEVKLAIFGRAGVGKSESTYRHQATIDDEVVSMEILD TAGQEDTIQREGHMRWGEFVLYVDITDR
GSFEEVLPKKNILDEIKPKNVTLLVGNKADLDHSRQVSTEEGEKLATELACAFYECSACTGEGNITEI
FYELCREVRRRMVQKTRRRSSTTHVKQAINKMLTKISS

TRTRPLE - GFP Tag - V

Restriction Sites: SgfI-MluI



[View online »](#)

Cloning Scheme:

Plasmid Map:


ACCN: NM_001190726

ORF Size: 540 bp

OTI Disclaimer: The molecular sequence of this clone aligns with the gene accession number as a point of reference only. However, individual transcript sequences of the same gene can differ through naturally occurring variations (e.g. polymorphisms), each with its own valid existence. This clone is substantially in agreement with the reference, but a complete review of all prevailing variants is recommended prior to use. [More info](#)

OTI Annotation: This clone was engineered to express the complete ORF with an expression tag. Expression varies depending on the nature of the gene.

Components:	The ORF clone is ion-exchange column purified and shipped in a 2D barcoded Matrix tube containing 10ug of transfection-ready, dried plasmid DNA (reconstitute with 100 ul of water).
Reconstitution Method:	<ol style="list-style-type: none">1. Centrifuge at 5,000xg for 5min.2. Carefully open the tube and add 100ul of sterile water to dissolve the DNA.3. Close the tube and incubate for 10 minutes at room temperature.4. Briefly vortex the tube and then do a quick spin (less than 5000xg) to concentrate the liquid at the bottom.5. Store the suspended plasmid at -20°C. The DNA is stable for at least one year from date of shipping when stored at -20°C.
RefSeq:	<u>NM_001190726.2</u>
RefSeq Size:	2268 bp
RefSeq ORF:	543 bp
Locus ID:	85004
UniProt ID:	<u>Q96A58</u>
Cytogenetics:	12p12.3
Protein Families:	Druggable Genome
Gene Summary:	RERG, a member of the RAS superfamily of GTPases, inhibits cell proliferation and tumor formation (Finlin et al., 2001 [PubMed 11533059]).[supplied by OMIM, Mar 2009]