

Product datasheet for **RG231024**

EPPIN-WFDC6 (NM_001198986) Human Tagged ORF Clone

Product data:

Product Type: Expression Plasmids
Product Name: EPPIN-WFDC6 (NM_001198986) Human Tagged ORF Clone
Tag: TurboGFP
Symbol: EPPIN-WFDC6
Synonyms: SPINLW1-WFDC6
Mammalian Cell Selection: Neomycin
Vector: pCMV6-AC-GFP (PS100010)
E. coli Selection: Ampicillin (100 ug/mL)
ORF Nucleotide Sequence: >RG231024 representing NM_001198986
Red=Cloning site **Blue**=ORF **Green**=Tags(s)

TTTTGTAATACGACTCACTATAGGGCGGCCGGAATTCGTCGACTGGATCCGGTACCGAGGAGATCTGCC
GCC**CGATCGCC**

ATGGGATCTTCTGGACTTTTGAGCCTCCTGGTCTATTGTCCTCTTAGCGAATGTCCAGGGACCTGGTC
TGACTGATTGGTTATTTCCAGGAGATGTCCAAAATCAGAGAAGAATGTGAATCCAAGAAAGGGATGT
GTGTACAAAGGACAGACAATGCCAGGACAACAAGAAGTGTGTCTTCAGCTGCGGAAAAAATGTTTA
GATCTCAAACAAGATGTATGCGAAATGCCAAAAGAACTGGCCCTGCCTGGCTTATTTCTTCATTGGT
GGTATGACAAGAAAGATAATACTTGCTCCATGTTGTCTATGGTGGCTGCCAGGAAACAATAACA
CTTCCAATCCAAGCCAAGTGCCTGAACACCTGCAAGAATAAACAGCCGTGTCCAAAATCAAAGTGG
AATGC GAAGTGGAAAGAAATAGACCAGTGTACCAAAACCCAGAGATTGCCAGAAAACATGAAGT
GTTGCCCGTTCA GCCGTGGAAGAAATGTTTAGACTTCAGAAAGCCTCTCTGTCTACA

ACGCGTACGCGGCCGCTCGAG - GFP Tag - GTTTAA

Protein Sequence: >RG231024 representing NM_001198986
Red=Cloning site **Green**=Tags(s)

MGSSGLLSLLVLFVLLANVQGPGLTDWLFPRRCPKIREECEVFQERDVCTKDRQCQDNKKCCVFSCGKKCL
DLKQDVCMPKETGPCLAYFLHWWYDKKDNTCSMFVYGGCQGNNNNFQSKANCLNTCKNKQPCPKIKVEE
EVEEIDQCTKPRDCPENMKCCPF SRGKKCLDFRKASLST

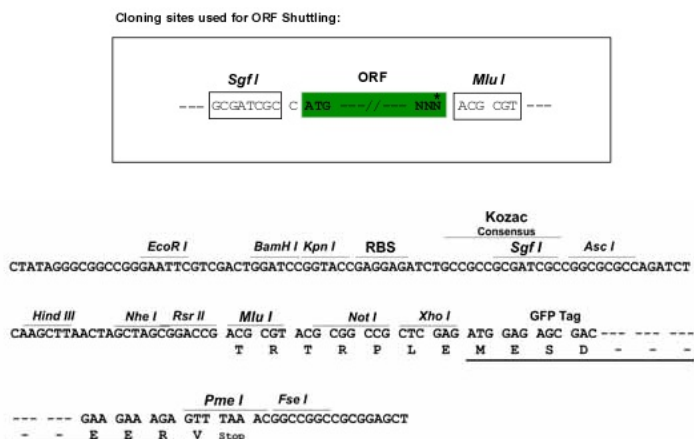
TRTRPLE - GFP Tag - V

Restriction Sites: Sgfl-MluI

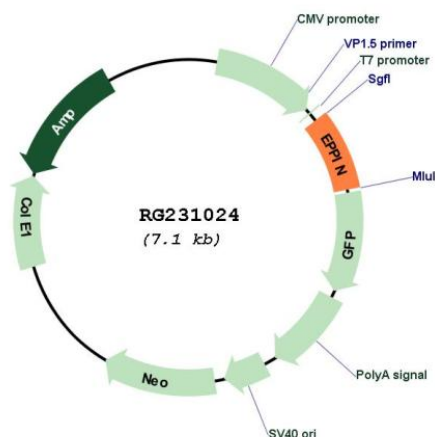


[View online >](#)

Cloning Scheme:



Plasmid Map:



ACCN: NM_001198986

ORF Size: 537 bp

OTI Disclaimer: The molecular sequence of this clone aligns with the gene accession number as a point of reference only. However, individual transcript sequences of the same gene can differ through naturally occurring variations (e.g. polymorphisms), each with its own valid existence. This clone is substantially in agreement with the reference, but a complete review of all prevailing variants is recommended prior to use. [More info](#)

OTI Annotation: This clone was engineered to express the complete ORF with an expression tag. Expression varies depending on the nature of the gene.

Components:	The ORF clone is ion-exchange column purified and shipped in a 2D barcoded Matrix tube containing 10ug of transfection-ready, dried plasmid DNA (reconstitute with 100 ul of water).
Reconstitution Method:	<ol style="list-style-type: none">1. Centrifuge at 5,000xg for 5min.2. Carefully open the tube and add 100ul of sterile water to dissolve the DNA.3. Close the tube and incubate for 10 minutes at room temperature.4. Briefly vortex the tube and then do a quick spin (less than 5000xg) to concentrate the liquid at the bottom.5. Store the suspended plasmid at -20°C. The DNA is stable for at least one year from date of shipping when stored at -20°C.
RefSeq:	<u>NM_001198986.2</u>
RefSeq Size:	1867 bp
RefSeq ORF:	540 bp
Locus ID:	100526773
UniProt ID:	<u>O95925</u>
Cytogenetics:	20q13.12
Gene Summary:	This locus represents naturally occurring read-through transcription between the neighboring SPINLW1 (serine peptidase inhibitor-like, with Kunitz and WAP domains 1) and WFDC6 (WAP four-disulfide core domain 6) genes. The read-through transcript encodes a fusion protein that shares sequence identity with the products of each individual gene. [provided by RefSeq, Nov 2010]