

Product datasheet for **RG231012**

DHRS4L2 (NM_001193635) Human Tagged ORF Clone

Product data:

Product Type: Expression Plasmids
Product Name: DHRS4L2 (NM_001193635) Human Tagged ORF Clone
Tag: TurboGFP
Symbol: DHRS4L2
Synonyms: SDR25C3
Mammalian Cell Selection: Neomycin
Vector: pCMV6-AC-GFP (PS100010)
E. coli Selection: Ampicillin (100 ug/mL)
ORF Nucleotide Sequence: >RG231012 representing NM_001193635
 Red=Cloning site Blue=ORF Green=Tags(s)

TTTTGTAATACGACTCACTATAGGGCGCCGGGAATTCGTCGACTGGATCCGGTACCGAGGAGATCTGCC
 GCC**CGATCGCC**

ATGCCATCCCCTGCCTCAGCCTCCCGAGTAGCTGGGACTACAGGATCGGCTTCGCCATCGCCCGGCGTT
 TGGCCCAGGACAGGGCCACGTGGTCGTCAGCAGCCGGAAGCAGCAGAATGTGGACCAGGCGGTGGCCAC
 GCTGCAGGGGAGGGGCTGAGCGTGACGGGCACTGTGTCCATGTGGGAAGGCGGAGGACCGGGAGCGG
 CTGGTGGCCATGACTCTGGACATTAATGTGAAGGCCCCAGCCCTGATGACAAAGGCAGTGGTGCCAGAAA
 TGGAGAAAACGAGGAGGCGGCTCAGTGGTGATCGTGTCTTCCATAGCAGCCTTCAGTCCATCTCCTGGCTT
 CAGTCCTTACAATGTAGTAAAACAGCCTTGCTGGGCCTCAACAATACCCTGGCCATAGAGCTGGCCCCA
 AGGAACATTAGGGTGAAGTGCCTGCACCTGGACTTATCAAGACTAGCTTCAGCAGGATGCTCTGGATGGA
 CAAGGAAAAGAGGAAAGCA

ACGCGTACGCGGCCGCTCGAG - GFP Tag - GTTTAA

Protein Sequence: >RG231012 representing NM_001193635
 Red=Cloning site Green=Tags(s)

MPFPCLSLPSSWDYRIGFAIARRLAQDRAHVVVSSRKQQNVDQAVATLQGEGLSVTGTVCHVGAEDRER
 LVAMTLDINVKAPALMTKAVVPEMEKRGGSVIVSSIAAFSPSPGFSPYNVSKTALLGLNNTLAIELAP
 RNIRVNCLHLDLRLASAGCSGWTRKKRKA

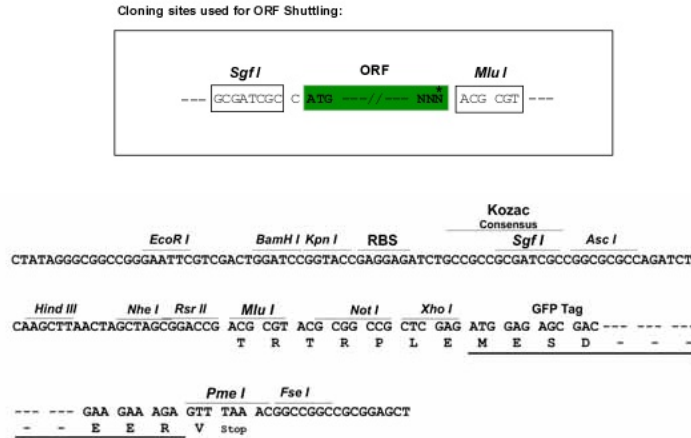
TRTRPLE - GFP Tag - V

Restriction Sites: Sgfl-MluI

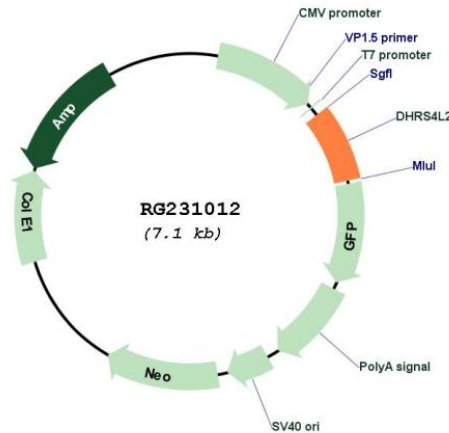


[View online »](#)

Cloning Scheme:



Plasmid Map:



ACCN: NM_001193635

ORF Size: 510 bp

OTI Disclaimer: The molecular sequence of this clone aligns with the gene accession number as a point of reference only. However, individual transcript sequences of the same gene can differ through naturally occurring variations (e.g. polymorphisms), each with its own valid existence. This clone is substantially in agreement with the reference, but a complete review of all prevailing variants is recommended prior to use. [More info](#)

OTI Annotation: This clone was engineered to express the complete ORF with an expression tag. Expression varies depending on the nature of the gene.

Components:	The ORF clone is ion-exchange column purified and shipped in a 2D barcoded Matrix tube containing 10ug of transfection-ready, dried plasmid DNA (reconstitute with 100 ul of water).
Reconstitution Method:	<ol style="list-style-type: none">1. Centrifuge at 5,000xg for 5min.2. Carefully open the tube and add 100ul of sterile water to dissolve the DNA.3. Close the tube and incubate for 10 minutes at room temperature.4. Briefly vortex the tube and then do a quick spin (less than 5000xg) to concentrate the liquid at the bottom.5. Store the suspended plasmid at -20°C. The DNA is stable for at least one year from date of shipping when stored at -20°C.
RefSeq:	<u>NM_001193635.1, NP_001180564.1</u>
RefSeq Size:	1342 bp
RefSeq ORF:	513 bp
Locus ID:	317749
Cytogenetics:	14q11.2
Protein Families:	Druggable Genome
Protein Pathways:	Metabolic pathways, Retinol metabolism
Gene Summary:	This gene encodes a member of the short chain dehydrogenase reductase family. The encoded protein may be an NADPH dependent retinol oxidoreductase. Alternate splicing results in multiple transcript variants. [provided by RefSeq, Aug 2010]