

## Product datasheet for **RG230913**

### LEPROT (NM\_001198683) Human Tagged ORF Clone

#### Product data:

**Product Type:** Expression Plasmids  
**Product Name:** LEPROT (NM\_001198683) Human Tagged ORF Clone  
**Tag:** TurboGFP  
**Symbol:** LEPROT  
**Synonyms:** LEPR; OB-RGRP; OBRGRP; VPS55  
**Mammalian Cell Selection:** Neomycin  
**Vector:** pCMV6-AC-GFP (PS100010)  
**E. coli Selection:** Ampicillin (100 ug/mL)  
**ORF Nucleotide Sequence:** >RG230913 representing NM\_001198683  
Red=Cloning site Blue=ORF Green=Tags(s)

TTTTGTAATACGACTCACTATAGGGCGGCCGGAATTCGTCGACTGGATCCGGTACCGAGGAGATCTGCC  
GCC**CGATCGCC**

**ATGGCGGGCGTTAAAGCTCTCGTGGCATTATCCTTCAGTGGGCTATTGGACTGACTTTTCTTATGCTGG  
GATGTGCCTTAGAGGATTATGGAGATGCCACAACACCCAGC**

**ACGCGTACGCGGCCGCTCGAG** - GFP Tag - GTTTAA

**Protein Sequence:** >RG230913 representing NM\_001198683  
Red=Cloning site Green=Tags(s)

MAGVKALVALSFSGAIGLTFMLGCALEDYGDATTPS

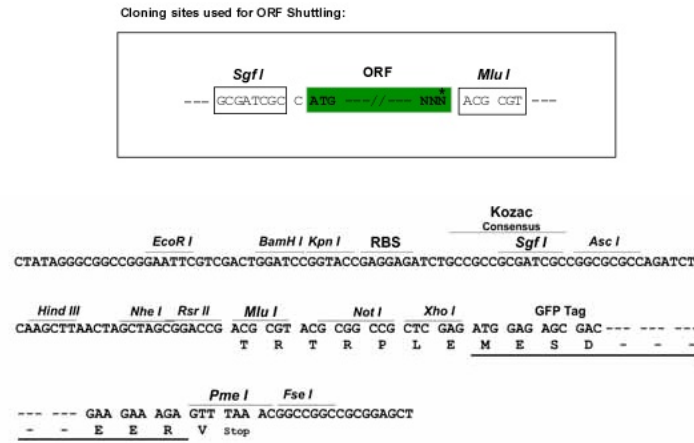
**TRTRPLE** - GFP Tag - V

**Restriction Sites:** Sgfl-Mlul

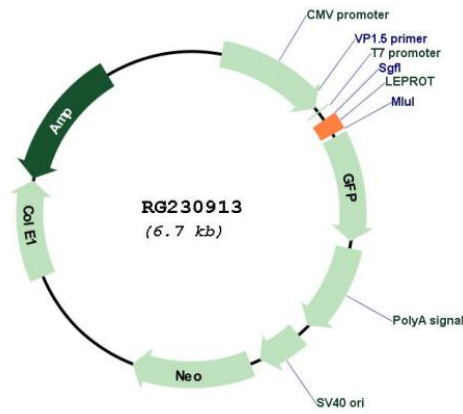


[View online »](#)

## Cloning Scheme:



## Plasmid Map:



ACCN: NM\_001198683  
 ORF Size: 111 bp

<b>OTI Disclaimer:</b>	The molecular sequence of this clone aligns with the gene accession number as a point of reference only. However, individual transcript sequences of the same gene can differ through naturally occurring variations (e.g. polymorphisms), each with its own valid existence. This clone is substantially in agreement with the reference, but a complete review of all prevailing variants is recommended prior to use. <a href="#">More info</a>
<b>OTI Annotation:</b>	This clone was engineered to express the complete ORF with an expression tag. Expression varies depending on the nature of the gene.
<b>Components:</b>	The ORF clone is ion-exchange column purified and shipped in a 2D barcoded Matrix tube containing 10ug of transfection-ready, dried plasmid DNA (reconstitute with 100 ul of water).
<b>Reconstitution Method:</b>	<ol style="list-style-type: none"><li>1. Centrifuge at 5,000xg for 5min.</li><li>2. Carefully open the tube and add 100ul of sterile water to dissolve the DNA.</li><li>3. Close the tube and incubate for 10 minutes at room temperature.</li><li>4. Briefly vortex the tube and then do a quick spin (less than 5000xg) to concentrate the liquid at the bottom.</li><li>5. Store the suspended plasmid at -20°C. The DNA is stable for at least one year from date of shipping when stored at -20°C.</li></ol>
<b>RefSeq:</b>	<a href="#">NM_001198683.2</a>
<b>RefSeq Size:</b>	611 bp
<b>RefSeq ORF:</b>	114 bp
<b>Locus ID:</b>	54741
<b>UniProt ID:</b>	<a href="#">O15243</a>
<b>Cytogenetics:</b>	1p31.3
<b>Protein Families:</b>	Druggable Genome, Transmembrane
<b>Gene Summary:</b>	LEPROT is associated with the Golgi complex and endosomes and has a role in cell surface expression of growth hormone receptor (GHR; MIM 600946) and leptin receptor (OBR, or LEPR; MIM 601007), thereby altering receptor-mediated cell signaling (Couturier et al., 2007 [PubMed 18042720]; Touvier et al., 2009 [PubMed 19907080]).[supplied by OMIM, Jul 2010]