

## Product datasheet for **RG230899**

### EIF4G1 (NM\_001194946) Human Tagged ORF Clone

#### Product data:

**Product Type:** Expression Plasmids  
**Product Name:** EIF4G1 (NM\_001194946) Human Tagged ORF Clone  
**Tag:** TurboGFP  
**Symbol:** EIF4G1  
**Synonyms:** EIF-4G1; EIF4F; EIF4G; EIF4GI; P220; PARK18  
**Mammalian Cell Selection:** Neomycin  
**Vector:** pCMV6-AC-GFP (PS100010)  
**E. coli Selection:** Ampicillin (100 ug/mL)  
**ORF Nucleotide Sequence:** >RG230899 representing NM\_001194946  
 Red=Cloning site Blue=ORF Green=Tags(s)

TTTTGTAATACGACTCACTATAGGGCGGCCGGAATTCGTCGACTGGATCCGGTACCGAGGAGATCTGCC  
 GCC**CGATCGCC**

ATGAACAAAGCTCCACAGTCCACAGGCCCCACCCGCCCATCCCCGGACTCCACAGCCAGCGTTTC  
 CCCCAGGGCAGACAGCGCGGTGGTGTTCAGTACGCCACAAGCGACACAATGAACACGCCTTCTCAGCC  
 CCGCCAGGGAGGATTCAAGTCTCTGCAGCACTTACCCTAGCCGGGCCAGCCCCGAGCAGTGCAGCC  
 TCCCGAGTGCAGAGTGCAGCCCCGCCCCCTGGCCAGCTGCCATGTCTACCCTGCTGGATCCCAAG  
 TAATGATGATCCCTTCCAGATCTCTACCCAGCTCCAGGGGGCTACTACATCCCTGGACAGGGGCG  
 TTCCACATACGTTGTCCCGACACAGCAGTACCCTGTGCAGCCAGGAGCCCCAGGCTTCTATCCAGGTGCA  
 AGCCCTACAGAATTTGGGACCTACGCTGGCGCCTACTATCCAGCCCAAGGGGTGCAGCAGTTTCCCACTG  
 GCGTGGCCCCCGCCAGTTTTGATGAACCAGCCACCCAGATTGCTCCCAAGAGGGAGCGTAAGACGAT  
 CCGAATTCGAGATCCAAACCAAGGAGGAAAGGATATCACAGAGGAGATCATGTCTGGGGCCCGCACTGCC  
 TCCACACCCACCCCTCCCGAGACGGGAGGCGGTCTGGAGCCTCAAGCTAATGGGGAGACGCCCAAGTTG  
 CTGTCAATGTCGGCCAGATGACCGGTACAGGGAGCAATCATTGCTGACCGGCCAGGGTGCCTGGCCC  
 AGAGCATAGCCCTTCAGAATCCAGCCTTCGTCGCCTTCTCCGACCCATCACCATCCCCAGTCTTGAA  
 CCGGGTCTGAGCCTAATCTCGCAGTCTCTATTCTGGGGACACTATGACAACATAACAAATGTCTG  
 TAGAAGAATCAACCCCATCTCCCGTAAACTGGGGAGCCATATCGCCTCTCTCCAGAACCCACTCTCT  
 CGCCGAACCCATACTGGAAGTAGAAGTGACACTTAGCAAACCGGTTCCAGAATCTGAGTTTTCTCCAGT  
 CCTCTCCAGGCTCCACCCCTTTGGCATCTCACACAGTGGAAATTCATGAGCCTAATGGCATGGTCCCAT  
 CTGAAGATCTGGAACAGAGGTGGAGTCAAGCCCAGAGCTTGCTCCTCCCCAGCTTGCCCTCCGAATC  
 CCCTGTGCCATTGCTCCAACCTGCCAACCTGAGGAAGTCTCAACGGAGCCCCCTGCCACCAGCTGTG  
 GACTTAAGCCCAGTCAGTGAAGCAGAGGAGCAGGCCAAGGAGGTGACAGCATCAGTGGCGCCCCCACCA  
 TCCCTCTGCTACTCCAGCTACGGCTCCTCAGCTACTCCCCAGCTCAGGAGGAGAAATGGAAGAAGA  
 AGAAGAAGAGGAAGAAGGAGAAGCAGGAGAAGCAGGAGAAGCTGAGAGTGAGAAAGGAGGAGGAACTG



[View online >](#)

CTCCCCCAGAGAGTACCCCTATTCCAGCCAACCTGTCTCAGAATTTGGAGGCAGCAGCAGCCACTCAAG  
 TGGCAGTATCTGTGCCAAGAGGAGACGGAAAATTAAGGAGCTAAATAAGAAGGAGGCTGTTGGAGACCT  
 TCTGGATGCCTTCAAGGAGGCGAACCCGGCAGTACCAGAGGTGAAAAATCAGCCTCTGCAGGCAGCAAT  
 CCAGGCCCAGAGTCTGAGGGCAGTGGTGTGCCCCACGTCTGAGGAAGCAGATGAGACCTGGGACTCAA  
 AGGAAGACAAAATTCACAATGCTGAGAACATCCAGCCCGGGAACAGAAGTATGAATATAAGTCAGATCA  
 GTGGAAGCCTCTAAACCTAGAGGAGAAAAACGTTACGACCGTGAGTTCCTGCTTGGTTTTCAAGTTCATC  
 TTTGCCAGTATGCAGAAGCCAGAGGGATTGCCACATATCAGTGACGTGGTGTGACCAAGCCAAATAAAA  
 CACCAGTGGCCACTGGATCCCACTAGACTACAAGGCATAAATTGTGGCCAGACTTCACTCCATCCCTT  
 TGCCAACCTTGGCCGGACAACCCCTTAGCACCCGTGGGCCCAAGGGGTGGGCCAGGTGGGGAGCTGCC  
 CGTGGGCCGGCTGGCCTGGGACCCCGGCCTCTCAGCAGGGACCCGAAAAGAACCACGCAAGATCATTG  
 CCACAGTGTTAATGACCGAAGATATAAACTGAACAAAGCAGAGAAAGCCTGGAAACCCAGCAGCAAGCG  
 GACGGCGGCTGATAAGGATCGAGGGGAAGAAGTGTGATGGCAGCAAAACCCAGGACCTATCCGCGAGG  
 GTGCGCTCCATCCTGAATAAACTGACACCCAGATGTTCCAGCAGCTGATGAAGCAAGTGACGCAGCTGG  
 CCATCGACACCGAGGAACGCCTCAAAGGGGTATTGACCTCATTTTTGAGAAGGCCATTTAGAGCCCAA  
 CTTCTCTGTGGCCTATGCCAACATGTGCCGCTGCCTCATGGCGTGAAAGTGCCCACTACGAAAAGCCA  
 ACAGTGACTGTGAACCTCCGAAAGCTGTTGTTGAATCGATGTCAGAAGGAGTTTGAGAAAAGCAAGATG  
 ATGATGAGGTTTTTGAGAAGAAGCAAAAAGAGATGGATGAAGCTGCTACGGCAGAGGAACAGGACGCCT  
 GAAGGAAGAGCTGGAAGAGGCTCGGGACATAGCCCGCGCGCTCTTTAGGGAATATCAAGTTTATTGGA  
 GAGTTGTTCAAAGTGAAGATGTTAACAGAGGCAATAATGCATGACTGTGTGGTCAAAGTCTTAAGAACC  
 ATGATGAAGAGTCCCTTGAGTGCCTTTGTGCTGCTCACCACCTATGGCAAAGACTGGACTTTGAAAA  
 AGCCAAGCCCGAATGGATCAGTATTTCAACCAGATGGAAAAATCATTAAAGAAAAGAAGACGTATCC  
 CGCATCCGCTTTATGCTGCAGGACGTGCTGGATCTGCGAGGGAGCAATTGGTGCCACCGCAGGGGATC  
 AGGGTCCCAAGACCATTGACCAGATCCATAAGGAGGCTGAGATGGAAGAACATCGAGACACATCAAAGT  
 GCAGCAGCTCATGGCCAAGGGCAGTGACAAGCGTCGGGGCGGTCTCCAGGCCCTCCCATCAGCCGTGGA  
 CTTCCCTTGTGGATGATGGTGGCTGGAACACAGTTCATCAGCAAAGGTAGCCGCCCTTGGACACCT  
 CACGACTACCAAGATACCAAGCCTGGCTCCATCGATTCTAACAACCAGCTCTTTGACCTGGAGGGCG  
 ACTGAGCTGGGGCAAGGGCAGCAGCGGAGGCTCAGGAGCCAAGCCCTCAGACGCAGCATCAGAAGCTGCT  
 CGCCAGCTACTAGTACTTTGAATCGTCTCTCAGCCCTCAACAAGCGGTACCCACAGAAAGCACAGATA  
 ATAGACGTGTGGTGCAGAGGAGTAGCTTGAAGCCGAGAACGAGGCGAGAAAGCTGGAGACCGAGGAGCCG  
 CCTAGAGCGGAGTGAACGGGAGGGGACCGTGGGGACCGCTTGATCGTGCAGGACACCTGCTACCAAG  
 CGGAGCTTCAGCAAGGAAGTGGAGGAGCGGAGTAGAGAACGGCCCTCCAGCCTGAGGGGCTGCGCAAGG  
 CAGCTAGCCTCACGGAGGATCGGGACCGTGGGGCGGATGCCGTGAAGCGAGAAGCTGCCCTACCCCAAGT  
 GAGCCCTTGAAGGGCGCTCTCTGAGGAGGAGTTAGAGAAGAAATCCAAGGCTATCATTGAGGAATAT  
 CTCCATCTCAATGACATGAAAGAGGCGAGTCCAGTGCCTGCAGGAGCTGGCCTCACCTCCTTGCTTTCA  
 TCTTTGTACGGCATGGTGTGCAGTCTACGCTGGAGCGCAGTGCCATTGCTCGTGAGCATATGGGGCAGCT  
 GCTGCACCAGTCTCTGTGCTGGGCATCTGTCTACTGCTCAGTACTACCAAGGGTTGTATGAAATCTTG  
 GAATTGGCTGAGGACATGGAAATGACATCCCCATGTGTGGCTACCTAGCGGAAGTGGTAACACCCA  
 TTCTGCAGGAAGGTGGGTGCCATGGGGAGCTGTTCAAGGAGATTACAAAGCCTCTGAGACCGTTGGG  
 CAAAGCTGCTTCCCTGTTGCTGGAGATCCTGGCCTCCTGTGCAAAAGCATGGGTCTAAAAAGGTGGGG  
 ACGCTGTGGCGAGAAGCCGGCTTAGCTGGAAGGAATTTCTACCTGAAGGCCAGGACATTGGTGCATTG  
 TCGCTGAACAGAAGGTGGAGTATACCCTGGGAGAGGAGTCGGAAGCCCTGGCCAGAGGGCACTCCCTC  
 CGAGGAGCTGAACAGGCAGCTGGAGAAGCTGCTGAAGGAGGGCAGCAGTAACCAGCGGTGTTGACTGG  
 ATAGAGGCCAACCTGAGTGAACAGCAGATAGTATCCAACACGTTAGTTCGAGCCCTCATGACGGCTGTCT  
 GCTATTCTGCAATATTTTTGAGACTCCCTCCGAGTGGACGTTGCAGTGTGAAAGCGCGAGCGAAAGCT  
 GCTGCAGAAATACCTGTGTGACGAGCAGAAGGAGCTACAGGCGCTCTACGCCCTCAGGCCCTTGTAGTG  
 ACCTTAGAACAGCCTCCCAACCTGCTGCGGATGTTCTTTGACGCACTGTATGACGAGGACGTGGTGAAGG  
 AGGATGCCTTCTACAGTTGGGAGAGTAGCAAGGACCCCGTGAAGCAGAGGGCAAGGGTGTGGCCCTTAA  
 ATCTGTACAGCCTTCTCAAGTGGCTCCGTGAAGCAGAGGAGGAGTCTGACCACAAC

ACGCGTACGCGGCCGCTCGAG - GFP Tag - GTTTAA

**Protein Sequence:** >RG230899 representing NM\_001194946  
 Red=Cloning site Green=Tags(s)

```

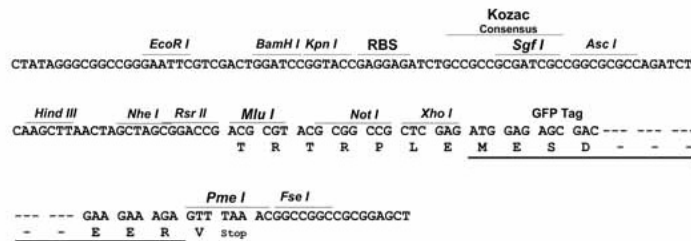
MNKAPQSTGPPPAPSPGLPQPAFPPGQTAPVVFSTPQATQMNTPSQPRQGGFRSLQHFYPSRAQPPSSAA
SRVQSAAPARPGPAAHVYPAGSQVMMIPISQISYPASQGYIIPGQGRSTYVVPTQQYVPVQAGPFYPGA
SPTEFGTYAGAYPAQGVQVQFPTGVAPAPVLMNQPPQIAPKRERKTIRIRDNPQGGKDITEEIMSGARTA
STPTPPQTGGGLEPQANGETPQVAVIVRPDDRSQGAIIADRPGLPGPEHSPSESQSPSSPPTPSPSPVLE
PGSEPNLAVLSIPGDTMTTIQMSVEESTPISRETGEPYRLSPEPTPLAEPILEVEVTLSPKVPSEFSSS
PLQAPTPLASHTVEIHEPNGMVPSEDLEPEVESSPELAPPPACPSESPVPIAPTAQPEELLNGAPSPPAV
DLSPVSEPEEQAKEVTASVAPPTIPSATPATAPSATSPAQEEEMEEEEEEEGEAGEAGEAESEKGGEEL
LPPESTPIPANLSQNLEAAAATQVAVSVPKRRRIKELNKKEAVGDLLDAFKEANPAVPEVENQPPAGSN
PGPESEGSVPPRPEEADETWDSKEDIHNAENIQPGEQKYEYKSDQWKPLNLEEKRYDREFLLGFQFI
FASMQKPEGLPHISDVVLDKANKTPLRPLDPTLQGINCGPDFTPSFANLGRITLSTRGPPRGGGGELP
RGPAGLGPRRSQQGPRKEPRKIIATVLMTEEDIKLNKAEKAWKPSSKRTAADKDRGEEDADGSKTQDLFRR
VRSILNKLTPQMFQQLMKQVTQLAIDTEERLKGVIDLIFEKAISEPNFSVAYANMCRCLMALKVPTTEKP
TVTVNFRKLLLNRCQKEFEKDKDDEVEFEKQKEMDEAATAEERGRLEELEEARRIARRRSLGNIKFIG
ELFKLMLTEAIMHDCVVKLLKNHDEESLECLCRLLTTIGKDLDFEKAKPRMDQYFNQMEKIIKEKKTSS
RIRFMLQDVLDLRGSNWVPRRGDQPKTIDQIHKEAEMEEHREHIKVQQLMAKGS DKRRGGPPGPIISRG
LPLVDDGGWNTVPI SKGSRPIDT SRLTKITKPGSIDSNQLFAPGGRLSWGKGS SGGGSAKPSDAASEAA
RPATSTLNRFSALQQAVPTESTDNRRVQRSSL SRERGEKAGDRGDRLERSERGGDRGDRLD RARTPATK
RSFSKEVEERSRERPSQPEGLRKAASL TEDRDRGRDAVKREAALPPVSPLKAAL SEEELEKKS KAIIEEY
LHLNDMKEAVQCVELASPSLLFIFVRHGVESTLERSAIAREHMGQLLHQLL CAGHLSTAQYYQGLYEIL
ELAEDMKEIDIPHVWLYLAELVTPILQEGGVPMGELFREITKPLRPLGKAASLLEILGLLCKSMGPKKVG
TLWREAGLSWKEFLPEGQDIGAFVAEQKVEYTLGEESEAPGQRALPSEELNRQLEKLLKEGSSNQRFVDW
IEANLSEQQIVSNTLVRALMTAVCYSAIIFETPLRVDVAVLKARAKLLQKYL CDEQKELQALYALQALV
TLEQPPNLLRMFFDALYDEDVVKEDAFYSWESSKDPAEQQGKGVALKSVTAFFKWLREAEESDHN
  
```

TRTRPLE - GFP Tag - V

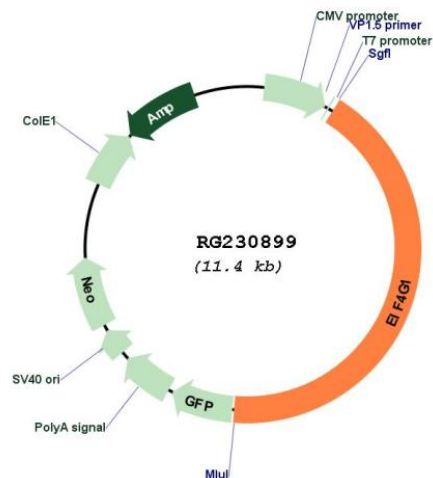
**Restriction Sites:** SgfI-MluI

**Cloning Scheme:**

Cloning sites used for ORF Shutting:



## Plasmid Map:



ACCN: NM\_001194946

ORF Size: 4818 bp

**OTI Disclaimer:** The molecular sequence of this clone aligns with the gene accession number as a point of reference only. However, individual transcript sequences of the same gene can differ through naturally occurring variations (e.g. polymorphisms), each with its own valid existence. This clone is substantially in agreement with the reference, but a complete review of all prevailing variants is recommended prior to use. [More info](#)

**OTI Annotation:** This clone was engineered to express the complete ORF with an expression tag. Expression varies depending on the nature of the gene.

**Components:** The ORF clone is ion-exchange column purified and shipped in a 2D barcoded Matrix tube containing 10ug of transfection-ready, dried plasmid DNA (reconstitute with 100 ul of water).

**Reconstitution Method:**

1. Centrifuge at 5,000xg for 5min.
2. Carefully open the tube and add 100ul of sterile water to dissolve the DNA.
3. Close the tube and incubate for 10 minutes at room temperature.
4. Briefly vortex the tube and then do a quick spin (less than 5000xg) to concentrate the liquid at the bottom.
5. Store the suspended plasmid at -20°C. The DNA is stable for at least one year from date of shipping when stored at -20°C.

RefSeq: [NM\\_001194946.1](#), [NP\\_001181875.1](#)

RefSeq Size: 5559 bp

RefSeq ORF: 4821 bp

Locus ID: 1981

Cytogenetics: 3q27.1

Protein Pathways: Viral myocarditis

**Gene Summary:** The protein encoded by this gene is a component of the multi-subunit protein complex EIF4F. This complex facilitates the recruitment of mRNA to the ribosome, which is a rate-limiting step during the initiation phase of protein synthesis. The recognition of the mRNA cap and the ATP-dependent unwinding of 5'-terminal secondary structure is catalyzed by factors in this complex. The subunit encoded by this gene is a large scaffolding protein that contains binding sites for other members of the EIF4F complex. A domain at its N-terminus can also interact with the poly(A)-binding protein, which may mediate the circularization of mRNA during translation. Alternative splicing results in multiple transcript variants, some of which are derived from alternative promoter usage. [provided by RefSeq, Aug 2010]