

Product datasheet for **RG230898**

eIF4GII (EIF4G3) (NM_001198802) Human Tagged ORF Clone

Product data:

Product Type:	Expression Plasmids
Product Name:	eIF4GII (EIF4G3) (NM_001198802) Human Tagged ORF Clone
Tag:	TurboGFP
Symbol:	EIF4G3
Synonyms:	eIF-4G 3; eIF4G 3; eIF4GII
Mammalian Cell Selection:	Neomycin
Vector:	pCMV6-AC-GFP (PS100010)
E. coli Selection:	Ampicillin (100 ug/mL)
ORF Nucleotide Sequence:	>RG230898 representing NM_001198802 Red=Cloning site Blue=ORF Green=Tags(s)

TTTTGTAATACGACTCACTATAGGGCGGCCGGAATTCGTCGACTGGATCCGGTACCGAGGAGATCTGCC
GCC**CGATCGCC**

ATGAATTCACAACCTCAAACCCGTTCTCCGGGAGGATTGACACCTATCCAGTTTTCCAGAGGCCTCAA
TACAGCCTCCTAGAGCTACCATCCGAACAGCAGTCTCCATTCGTCTGGTGCACAGACCCACTGC
AGTGTACCAGGCTAATCAGCACATCATGATGGTTAACCATCTGCCATGCCGTACCCAGTGCCCAAGGG
CCTCAGTACTGTATACCACAGTACCGTCATAGTGGCCCTCCTTATGTTGGCCCCCAACAATATCCAG
TTCAACCACCGGGCCAGGTCTTTTTATCCTGGACCAGGACCTGGGACTTCCCAATGCTTATGGAAC
GCCTTTTTACCAAGTCAGCCGGTGTATCAGTCAGCACCTATCATAGTGCCTACGCAGCAACAGCCGCT
CCAGCCAAGAGAGAGAAAAAATAAAGAATTCGGGATCCAAACCAGGGAGGTAAGACATAACAGAGG
AGATTATGTCTGGAGGTGGCAGCAGAAATCCTACTCCACCCATAGGAAGACCCAGTCCACACCTACTCC
TCCTCAGCTGCCAGCCAGGTCCCGAGCACAGCCCTGTGGTTTATGGGACTGTGGAGAGCGCTCATCTT
GCTGCCAGCACCCCTGTCACTGCAGTACGACCAAGAAGCAAGAGGAGAAGCCAAAACAGATCCAGTGT
TAAAGTCTCTCCCAAGTCTTAGGCTAGTCTCAGTGGAGAGAAGAAAGAACAAGAAGGCCAGACATC
TGAAACTACTGCAATAGTATCCATAGCAGAGCTTCTCTGCTCTTAGTAGCCAACCAATATTCACCCACTG
GCTCGAAGTACAATTGCAGCCCCACCTCTTCTGCTCTTAGTAGCCAACCAATATTCACCCACTGCTATAG
ATGACAGATGTGAACTCTCATCCCAAGAGAAGACACAATTCTATACCCAGCCTCACATCTTGCACAGA
AACATCAGACCCTTTACCAACAAATGAAAATGATGATGATATATGCAAGAAACCTGTAGTGTAGCACCT
AATGATATTCAGTGGTTCTAGTACTAACCTAATTAATGAAATAAATGGAGTTAGCGAAAAATTATCAG
CCACGGAGAGCATTGTGGAAATAGTAAAACAGGAAGTATTGCCATTGACTCTTGAATTGGAGATTCTCGA
AAATCCCCCAGAAGAAATGAAACTGGAGTGTATCCAGCTCCCATCACCCCTCCACAGTTCCTTCCTTT
CCTCCAACCTCCAACCTCCAGCTTCTCCTCCTCACACTCCAGTCATTGTTCTGCTGCTGCCACTA
CTGTTAGTCTCCGAGTGTGCCATCACAGTCCAGAGAGTCTAGAGGAGGACGAGAGCATAAGAAGTGT
CCTTAGTGAAGATGCAAAAGAGATTCAGAACAAAATAGAGGTAGAAGCAGATGGGCAACAGAAGAGATT



[View online >](#)

TTGGATTCTCAAACTTAAATTCAGAAGGAGCCCTGTCCAGCTCAAATAGCTATAACTGTACCAAAGA
 CATGGAAGAAACCAAAAGATCGGACCCGAACACTGAAGAGATGTTAGAGGCAGAATTGGAGCTTAAAGC
 TGAAGAGGAGCTTTCCATTGACAAAAGTACTTGAATCTGAACAAGATAAAATGAGCCAGGGGTTTCATCCT
 GAAAGAGACCCCTCTGACCTAAAAAAGTGAAAGCTGTGGAAGAAAATGGAGAAGAAGCTGAGCCAGTAC
 GTAATGGTGTGAGAGTGTCTGAGGGTGAAGGAATAGATGCTAATTCAGGCTCCACAGATAGTTCTGG
 TGATGGGGTTACATTTCCATTTAAACCAGAATCCTGGAAGCCTACTGATACTGAAGGTAAGAAGCAGTAT
 GACAGGGAGTTTCTGCTGGACTTCCAGTTCATGCCTGCCTGTATACAAAAACAGAGGGCCTGCCTCCTA
 TCAGTGATGTGGTCTTGACAAGATCAACCAACCCAAATTGCCAATGCGAACTCTGGATCCTCGAATTTT
 GCCTCGAGGACCAGACTTTACACCAGCCTTTGCTGATTTTGAAGGCAGACACCTGGTGAAGAGGCGTA
 CCTTTGTTGAATGTTGGGTACGAAAGTCTCAACCTGGCCAAAGAAGAGAACCCAGAAAAGATCATCACAG
 TTTCTGTAAAAGAAGATGTACACCTGAAAAAGGCAGAAAATGCCTGGAAGCCAAGCCAAAAACGAGACAG
 CCAAGCCGATGATCCCGAAAACATTA AACCCAGGAGCTTTTTAGAAAAGTTCGAAGTATCTTAAATAAA
 TTGACACCACAGATGTTCAATCAACTGATGAAGCAAGTGTGAGGACTTACTGTTGACACAGAGGAGCGGC
 TGAAGGAGTTATTGACCTGGTCTTTGAGAAGGCTATTGATGAACCCAGTTTCTCTGTGGCTTACGCAA
 CATGTGTCGATGTCTAGTAACGCTGAAAGTACCATGGCAGACAAGCCTGGTAACACAGTGAATTTCCGG
 AAGCTGCTACTGAACCGTTGCCAGAAGGAGTTTGA AAAAGATAAAGCAGATGATGATGCTTTTGAGAAGA
 AGCAGAAAAGA ACTTGAGGCTGCCAGTGTCCAGAGGAGAGGACAAGGCTTCATGATGAACTGGAAGAAGC
 CAAGGACAAAAGCCCGGCGGAGATCCATTGGCAACATCAAGTTTATTGGAGAACTCTTTAAACTCAAATG
 CTGACTGAAGCCATCATGCATGACTGTGTGGTGAAGCTGCTAAAGAACCATGATGAAGAATCCCTGGAGT
 GCCTGTGTCGCCTGTCCACCATTGGCAAAGACTTGGACTTTGAAAAGCAAAGCCACGATGGACCA
 GTACTTTAATCAGATGGAGAAAATTGTGAAAGAAAAGAAAACCTCATCTAGGATTCGGTTCATGCTTCAA
 GATGTTATAGACCTAAGGCTGTGCAATTGGGTATCTCGAAGAGCAGATCAAGGGCCTAAAACATCGAAC
 AGATTCACAAAGAGGCTAAAATAGAAGAACAAGAAGAGCAAAGGAAGTCCAGCAACTCATGACCAAAGA
 GAAGAGAAGACCAGGTGTCCAGAGAGTGGACGAAGGTGGGTGGAACACTGTACAAGGGGCAAGAACAAGT
 CGGGTACTGGACCCCTCAAAATTCCTAAAAATCACTAAGCCTACAATTGATGAAAAAATTCAGCTGGTAC
 CTAAGACACAGCTAGGCAGCTGGGAAAAGGCAGCAGTGGTGGAGCAAAGGCAAGTGAAGTGTGACCTT
 ACGGTCAAGTGTCTCCAGTTTAAACAGATTCTCTGCCCTGCAACCTCCAGCACCTCAGGGTCCACGCCA
 TCCACGCCTGTAGAGTTTGATCCCGAAGGACCTTAAGTGTGGAAGTATGGGCAGGGAGAAGAATG
 ACAAGCCCCTCCATCTGCAACAGCTCGGCCAAATACTTTTCATGAGGGGTGGCAGCAGTAAAGACCTGCT
 AGACAATCAGTCTCAAGAAGAGCAGCGGAGAGAGATGCTGGAGACCGTGAAGCAGCTCACAGGAGGTGTG
 GATGTGGAGAGGAACAGCACTGAGGCTGAGCGAAATAAAACAAGGGAGTCAAGAAAACAGAAATTTTCAG
 CAATGTCAGTCTATGACAAGGCTGCAATTATCAGAAGAGGAAGTGGAGAGGAAGTCAAAATCTATCATTGA
 TGAATTTCTACACATTAATGATTTTAAGGAAGCCATGCAGTGTGTGGAAGAGCTGAATGCCAGGGCCTA
 CTACATGTTTTTTGTGAGAGTGGGAGTGGAGTCCACCCTGGAAAGGAGCCAGATCACAGGGATCACATGG
 GCCAACTACTCTATCAGCTGGTACAGTCAGAAAAACTCAGCAAACAGGACTTTTTCAAAGGTTTTTCAGA
 AACTTTGGAATTTGGCAGATGACATGGCCATTGATATTTCCCATATTTGGTTGTACCTTGCTGAAGTGGT
 ACCCCCATGTTAAAAGAAGGTGGAATCTCCATGAGAGA ACTTACCATAGAATTTAGCAAACCTTTACTTC
 CTGTTGGAAGAGCTGGGGTCTTGCTATCTGAAATATTGCACCTACTATGCAAACAATGAGCCATAAGAA
 AGTGGGAGCCTTATGGAGGGAGGCTGACCTCAGCTGGAAGGACTTTTTACCAGAAGGAGAAGATGTACAT
 AATTTTCTTTTGGAGCAGAAGTTGGACTTCATAGAGTCTGACAGTCCCTGTTTCTCTGAAGCACTTTCAA
 AGAAAGA ACTGTCTGCCGAAGAGCTGTATAAGCGACTCGAGAACTCATTATTGAGGACAAAAGCGAATGA
 TGAACAGATCTTTGACTGGGTAGAGGCTAATCTAGACGAAATCCAGATGAGTTACCTACATTCCTTAGA
 GCTTTAATGACTGCTGTTTGTAAAGCAGCTATTATAGCCGACTCTTCTACCTTCAGAGTGGACACTGCTG
 TTATCAAGCAGAGAGTGGCGATCTTACTCAAGTACCTAGACTCAGATACAGAGAAGGAACTGCAAGCACT
 TTATGCACTACAAGCATCGATAGTAAA ACTTGATCAACCTGCCAATTTGCTGCGGATGTTTTTTGATTGT
 CTATATGACGAGGAGGTGATCTCCGAGGATGCCTTCTACAAATGGGAGAGCAGCAAGGACCCTGCAGAGC
 AGAATGGGAAGGGCGTGGCTCTGAAATCTGTCACGGCATTCTTCAGTGGCTGCGGGAAGCAGAAGAGGA
 GTCTGAGGATAAC

ACGCGTACGCGGCCGCTCGAG - GFP Tag - GTTTAA

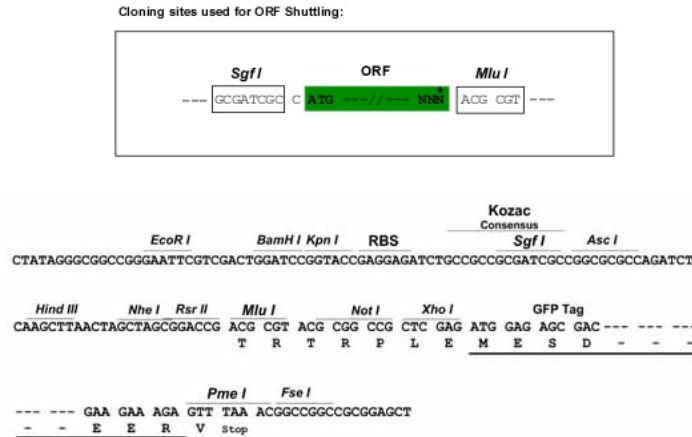
Protein Sequence: >RG230898 representing NM_001198802
 Red=Cloning site Green=Tags(s)

MNSQPQTRSPGGFRPIQFFQRPQIQPPRATIPNSSPSIRPGAQTPTAVYQANQHIMMVNHLMPYPVPQG
 PQYCIQYRHSPPYVGGPPQYVQPPGPGPFYPGPGGDFPNAYGTPFYPSQPVYQSAP IIVPTQQPP
 PAKREKTIIRIRDPNQGKDIITEEIMSGGSRNPTPIIGRPTSTPTPPQLPSQVPEHSPVYGTVESAHL
 AASTPVTAAASDQKQEKPDPVVKSPSPVLRRLVLSGEKKEQEGQTSSETTAIVSIAELPLPPSPTTVSSV
 ARSTIAAPTSSALSSQPIFTTAIDDRCELSSPREDTIPIPSLTSCETSDPLPTNENDDICKKPCSVAP
 NDIPLVSTNLININGVSEKLSATESIVEIVKQEVLP L TLELEILENPPPEMKLECIPAPITPSTVPSF
 PPTPTPPASPPHTPVIVPAAATTVSSPSAAITVQRVLEEDESIRTCLSEDAKEIQNKIEVEADGQTEEI
 LDSQNLNSRRSPVPAQIAITVPKTKPKDRTRTTEEMLEAELELKAEELSIDKVLSEEDKMSQGFHP
 ERDPSDLKVKAVEENGEAEAPVRNGAESVSEGEIDANSGSTDSSGDGVTFFPKPESWKPTDTEGKKQY
 DREFLDLDFQMPACIQKPEGLPPI SDVVLDKINQPKLPMRTLDPRI L PRGPDFTPAFADFGRTPGGRGV
 PLLNVGSRRSQPGQRREPRKIITVSVKEDVHLKKAENAWKPSQKRDSQADDPENIKTQELFRKVR SILNK
 LTPQMFNLQMKQVSGLTVDTEERLKGVIDLVFEKAIDEPSFSVAYANMCRCLVTLKVPMAADKPGNTV NFR
 KLLLNRCKQKFEKDKADDDVFEKKQKLEAASAPEERTRLHDELEEAKDKARRRSIGNIKF IGELFKLKM
 L TEAIMHDCVVKLLKNHDEESLECLCRLTTIGKDLDFEKAKPRMDQYFNQMEKIVKERKTSRIRFMLQ
 DVIDLRLCNWVSRRADQGPKTIEQIHKEAKIEEQEEQRKVQQLMTKEKRRPGVQRVDEGGWNTVQGA KNS
 RVLDPKFLKITKPTIDEKIQLVPAQQLGSWKGSSGGAKASETDALRSSASSLNRFSALQPPAPSGSTP
 STPVEFDSRRTLTSRGSMGREKNDKPLPSATARPNTFMRGGSSKDLLDNQSQEEQRREMLETVKQLTGGV
 DVERNSTEARNKTRESAKPEISAMSAHDKAALSEEELERKSKS I IDEFLHINDFKEAMQCVEELNAOGL
 LHV FVRVGVESTLERSQITRDHMGQLLYQLVQSEKLSKQDFFKGFSETLELADDMAIDIPHIWLYLAELV
 TPMLKEGGISMREL TIEFSKPLLVPVGRAGVLLSEILHL LCKQMSHKVGVALWREADL SWKDFLPEGEDVH
 NFLLLEQKLD FIESDSPCSSEALSKKELSAEELYKRLEKLI IEDKANDEQIFDWVEANLDEIQMSSPTFLR
 ALMTAVCKAAIIADSSTRVDTAVIKQRPILLKYLDSDTEKELQALYALQASIVKLDQPANLLRMFFDC
 LYDEEVISEDAFYKWESSKDPAEQNGKGVALKSVTAFFTWLREAEESSEDN

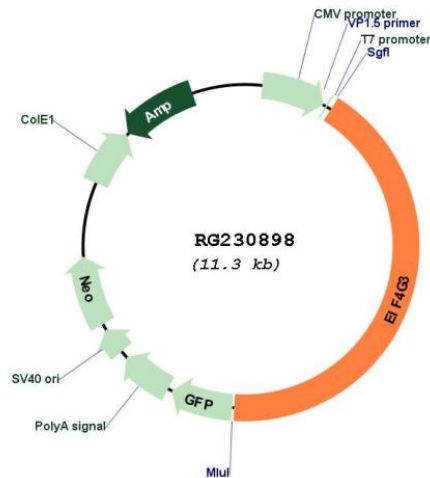
TRTRPLE - GFP Tag - V

Restriction Sites: SgfI-MluI

Cloning Scheme:



Plasmid Map:



ACCN: NM_001198802

ORF Size: 4773 bp

OTI Disclaimer: Due to the inherent nature of this plasmid, standard methods to replicate additional amounts of DNA in *E. coli* are highly likely to result in mutations and/or rearrangements. Therefore, OriGene does not guarantee the capability to replicate this plasmid DNA. Additional amounts of DNA can be purchased from OriGene with batch-specific, full-sequence verification at a reduced cost. Please contact our customer care team at custsupport@origene.com or by calling 301.340.3188 option 3 for pricing and delivery.

The molecular sequence of this clone aligns with the gene accession number as a point of reference only. However, individual transcript sequences of the same gene can differ through naturally occurring variations (e.g. polymorphisms), each with its own valid existence. This clone is substantially in agreement with the reference, but a complete review of all prevailing variants is recommended prior to use. [More info](#)

OTI Annotation: This clone was engineered to express the complete ORF with an expression tag. Expression varies depending on the nature of the gene.

Components: The ORF clone is ion-exchange column purified and shipped in a 2D barcoded Matrix tube containing 10ug of transfection-ready, dried plasmid DNA (reconstitute with 100 ul of water).

Reconstitution Method:	<ol style="list-style-type: none">1. Centrifuge at 5,000xg for 5min.2. Carefully open the tube and add 100ul of sterile water to dissolve the DNA.3. Close the tube and incubate for 10 minutes at room temperature.4. Briefly vortex the tube and then do a quick spin (less than 5000xg) to concentrate the liquid at the bottom.5. Store the suspended plasmid at -20°C. The DNA is stable for at least one year from date of shipping when stored at -20°C.
RefSeq:	<u>NM_001198802.1</u> , <u>NP_001185731.1</u>
RefSeq Size:	6425 bp
RefSeq ORF:	4776 bp
Locus ID:	8672
UniProt ID:	<u>O43432</u>
Cytogenetics:	1p36.12
Protein Families:	Transcription Factors
Protein Pathways:	Viral myocarditis
Gene Summary:	<p>The protein encoded by this gene is thought to be part of the eIF4F protein complex, which is involved in mRNA cap recognition and transport of mRNAs to the ribosome. Interestingly, a microRNA (miR-520c-3p) has been found that negatively regulates synthesis of the encoded protein, and this leads to a global decrease in protein translation and cell proliferation. Therefore, this protein is a key component of the anti-tumor activity of miR-520c-3p. [provided by RefSeq, May 2016]</p>