

Product datasheet for **RG230896**

PTPRU (NM_001195001) Human Tagged ORF Clone

Product data:

Product Type:	Expression Plasmids
Product Name:	PTPRU (NM_001195001) Human Tagged ORF Clone
Tag:	TurboGFP
Symbol:	PTPRU
Synonyms:	FMI; hPTP-J; PCP-2; PTP; PTP-J; PTP-PI; PTP-RO; PTPPSI; PTPRO; PTPU2; R-PTP-PSI; R-PTP-U
Mammalian Cell Selection:	Neomycin
Vector:	pCMV6-AC-GFP (PS100010)
E. coli Selection:	Ampicillin (100 ug/mL)
ORF Nucleotide Sequence:	>RG230896 representing NM_001195001 Red=Cloning site Blue=ORF Green=Tags(s)

TTTTGTAATACGACTCACTATAGGGCGGCCGGAATTCGTCGACTGGATCCGGTACCGAGGAGATCTGCC
GCC**CGATCGCC**

ATGGCCCGTGCCAGGCGCTCGTGCTGGCACTCACCTTCCAGCTCTGCGCGCCGGAGACCGAGACTCCGG
CAGCTGGCTGCACCTTCGAGGAGGCAAGTGACCCAGCAGTGCCCTGCGAGTACAGCCAGGCCAGTACGA
TGACTTCCAGTGGGAGCAAGTGCGAATCCACCCTGGCACCCGGGCACCTGCGGACCTGCCCCACGGCTCC
TACTTGATGGTCAACACTTCCCAGCATGCCCCAGGCCAGCGAGCCCATGTATCTTCCAGAGCCTGAGCG
AGAATGATACCCACTGTGTGCAGTTCAGTACTTCTGTACAGCCGGGACGGGCACAGCCCGGGCACCT
GGGCGTCTACGTGCGCGTAAATGGGGGCCCCCTGGGCAGTGCTGTGTGGAATATGACTGGATCCACGGC
CGTCAGTGGCACCAGGCTGAGCTGGCTGTGCACTTTCTGGCCCAATGAATATCAGGTGCTGTTTGAGG
CCCTCATCTCCCCAGACCGCAGGGGCTACATGGGCCTAGATGACATCCTGCTTCTCAGTACCCCTGCGC
AAAGGCCCCACACTTCTCCCGCTGGGCGACGTGGAGGTCAACGCGGGCCAGAACGCGTCTGTTCCAGTGC
ATGGCCGCGGGCAGAGCGGCCGAGGCGGAACGCTTCTCTTGAACGCGCAGAGCGGGGCGTGGTGCCGG
CGGCGGGCGTGGGCACATCAGCCACCGGCGTTCCTGGCCACTTCCCGCTGGCTGCCGTGAGCCGCGC
CGAGCAGGACCTGTACCCTGTGTGTCCCAGGCCCGCGCGGGCGTCTCTAACTTCGCGGAGCTC
ATCGTCAAGGAGCCCCAACTCCATCGCGCCCCACAGCTGCTGCGTGGCCCCACTACCTCATCA
TCCAGCTCAACACCAACTCCATCATTGGCGACGGGCCGATCGTGCGAAGGAGATTGAGTACCGCATGGC
GCGCGGGCCCTGGGCTGAGGTGCACGCCGTGAGCCTGCAGACCTACAAGTGTGGCACTCGACCCCGAC
ACAGAGTATGAGATCAGCGTGCTGCTCACGCGTCCCGGAGACGGCGGCACTGGCCGCCCTGGGCCACCC
TCATCAGCCGCACCAAATGCGCAGAGCCCATGAGGGCCCCAAAGGCTGGCTTTTGTGAGATCCAGGC
CCGTGAGTACCTGACCTGAGTGGGAACACTGGGCTACAACGTGACGCGTTGCCACACCTATACTGTGTCG
CTGTGCTATCACTACCCCTGGGACGACGCCACAACCAGACCATCCGAGAGTGTGTAAGACAGAGCAAG
GTGTGAGCGCTACACCATCAAGAACCTGCTGCCCTATCGGAACGTTACGTGAGGCTTGTCTCACTAA
CCCTGAGGGCGCAAAGAGGGCAAGGAGTCACTTCCAGACGGATGAGGATGTGCCAGTGGGATTGCA



[View online »](#)

GCCGAGTCCCTGACCTTCACTCCACTGGAGGACATGATCTTCTCAAGTGGGAGGAGCCCCAGGAGCCCA
ATGGTCTCATACCCAGTATGAGATCAGCTACCAGAGCATCGAGTCATCAGACCCGGCAGTGAACGTGCC
AGGCCACGACGTACCATCTCCAAGCTCCGCAATGAGACCTACCATGTCTTCTCCAACCTGCACCCAGGC
ACCACCTACCTGTTCTCCGTGCGGGCCCCGACAGGCAAAGGCTTCGGCCAGGCGGCACTCACTGAGATAA
CCACTAACATCTCTGCTCCAGCTTTGATTATGCCGACATGCCGTACCCCTGGGCGAGTCTGAGAACAC
CATCACCGTGTCTGAGGCCGGCACAGGGCCGGTGCGCCATCAGTGTGTACCAGGTGATTGTGGAG
GAGGACGGGGCGCGGAGGCTGCGCGGGAGCCAGGTGGACAGGACTGCTTCCCAGTGCCATTGACCTTCG
AGGCGGCCCTGGCCCGAGGCTGGTGCCTACTTCGGGGCCGAAGTGGCGGCCAGCAGTCTACCTGAGGC
CATGCCCTTTACCGTGGGTGACAACCAGACCTACCAGGCTTCTGGAACCCACCCTTGAGCCTAGGAAG
GCCTATCTCATCTACTTCCAGGCAGCAAGCCACCTGAAGGGGGAGACCCGGCTGAATTGCATCCGCATTG
CCAGGAAAGCTGCCTGCAAGGAAAGCAAGCGGCCCTGGAGGTGTCCAGAGATCGGAGGAGATGGGGCT
TATCCTGGGCATCTGTGCAGGGGGCTTGTGTCTCATCTTCTCTGGGTGCCATCATTGTGCATCATC
CGCAAAGGAAGCCGGTGAACATGACCAAGGCCACCGTCAACTACCGCCAGGAGAAGACACACATGATGA
GCGCCGTGGACCGCAGCTTACAGACCAGAGCACCTGCAGGAGGACGAGCGGCTGGGCCTGTCTTCAT
GGACCCCATGGCTACAGCACCCGGGAGACCAGCGCAGCGGTGGGGTCACTGAGGCCAGCAGCCTCCTG
GGGGGCTCCCCGAGGCGTCCCTGTGGCCGGAAGGCTCCCATATCACAGGGGCGAGTGCACCCCTGCGG
TGGTGTGCGCAGACCTTCTGCAGCACATCAACCAGATGAAGACGCGCCGAGGGTTACGGCTTCAAGCAGGA
GTATGAGAGCTTCTTTGAAGGCTGGGACGCCACAAGAAGAAAGACAAGGTCAAGGGCAGCCGGCAGGAG
CCAATGCCTGCCTATGATCGGCACCGAGTAAAAGTGCACCCGATGCTGGGAGACCCCAATGCCGACTACA
TTAATGCCAACTACATAGATGGTTACCACAGGTCAAACCACTTCAAGCCACTCAAGGGCCGAAGCCTGA
GATGGTCTATGACTTCTGGCGTATGGTGTGGCAGGAGCACTGTCCAGCATCGTCATGATACCAAGCTG
GTGCGAGGTGAAATGCTCACGGTACTGGCCGGAGGACTCAGACACCTACGGGGACATCAAGATTATGCTGG
TGAAGACAGAGACCTGGCTGAGTATGTCGTGCGCACTTTGCCCTGGAGCGGAGAGGCTACTCTGCCCG
GCACGAGGTCCGCCAGTTCCTCACTTACAGCGTGGCCAGAGCATGGCGTCCCTACCATGCCACGGGGCTG
CTGGCTTTTTCATCCGGCGGTGAAGGCTCCACCCACCTGATGCCGGGCCATTGTGCATCCACTGCAGCG
CGGGCACCGGCCGACAGGTTGTATATCGTCCTGGATGTGATGCTGGACATGGCAGAGTGTGAGGGCGT
CGTGGACATTTACAAGTGTGGAAGACTCTGTCTCCCGCGTGTCAACATGATCCAGACTGAGGAGCAG
TACATCTTTCATTCATGATGCAATCCTGGAGGCTGCCTGTGTGGGAGACCACCATCCCTGTGAGTGT
TCAAGGCCACCTACAAGGAGATGATCCGCATTGATCCTCAGAGTAATTCCTCCAGCTGCGGGAAGAGTT
CCAGACGCTGAACTCGGTACCCCGCCGCTGGACGTGGAGGAGTGCAGCATCGCCCTGTTGCCCGGAAC
CGCGACAAGAACCAGCAGCATGGACGTCTGCCCGCCGACCGCTGCCTGCCCTTCTCATCTCCACTGATG
GGGACTCCAACAACCTACATTAATGCAGCCCTGACTGACAGCTACACAGGAGTGGCGCCTTCATCGTGAC
CCTGCACCCGCTGCAGAGCACCACGCCGACTTCTGGCGGCTGGTCTACGATTACGGGTGCACCTCCATC
GTCATGCTCAACCAGCTGAACCAGTCCAACCTCCGCTGGCCCTGCCTGCAGTACTGGCCAGAGCCAGGCC
GGCAGCAATATGGCCTCATGGAGGTGGAGTTTATGTGGGCACAGCTGATGAAGACTTAGTGGCTCGAGT
CTTCCGGGTGCAGAACATCTCTCGTTGACAGGAGGGGCACCTGCTGGTGGCGCACTTCCAGTTCTGCGC
TGGTCTGCATACCGGGACACACTGACTCCAAGAAGGCCCTTCTTGACCTGCTGGCTGAGGTGGACAAGT
GGCAGGCCGAGAGTGGGGATGGGCGACCATCGTGCCTGCTAAACGGGGGAGGACGACGCGCACCTT
CTGCGCCTGCGCCACGGTCTGGAGATGATCCGCTGCCACAACCTGGTGGACGTTTTCTTTGCTGCCAAA
ACCCTCCGGAACATAAAACCAACATGGTGGAGACCATGGATCAGTACCCTTTTGTACGATGTGGCC
TGGAGTACTTGGAGGGCTGGAGTCAAGA

AGCGGACCGACGCGTACGCGGCCGCTCGAG - GFP Tag - GTTTAA

Protein Sequence: >RG230896 representing NM_001195001
 Red=Cloning site Green=Tags(s)

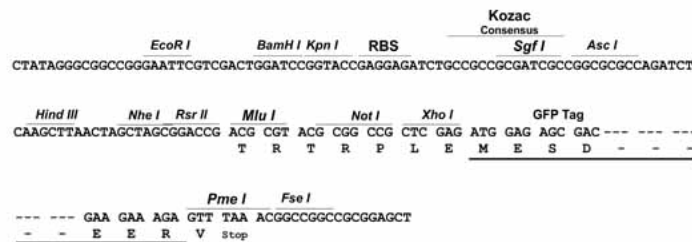
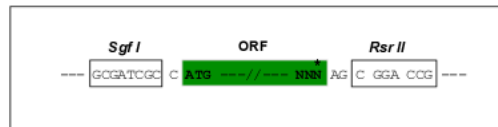
MARAQALVLALTFQLCAPETETPAAGCTFEEASDPAVPCEYSQAQYDDFQWEQVRIHPGTRAPADLPHGS
 YLMVNTSQHAPGQRAHVIFQSLSENDTHCVQFSYFLYSRDGHSPGTLGVYVRVNGGPLGSAVWNMTGSHG
 RQWHQAEALAVSTFWPNEYQVLFALISPDRRGYMGLDDILLLSYPCAKAPHFSRLGDVEVNAGQNASFQC
 MAAGRAAEAEERFLLQRQSGALVPAAGVRHISHRRFLATFPLAAVSRAEQDLYRCVSOAPRGAGVSNFAEL
 IVKEPPTPIAPPQLLRAGPTYLIIQLNTNSIIGDGPVIRKEIEYRMARGPWAEVHAVSLQTYKLWHLDPD
 TEYEISVLLTRPGDGGTGRPGPPLISRTKCAEPMRAPKGLAFAEIQARQLTLQWEPLGYNVTRCHTYTVS
 LCYHYTLGSSHNQTIRECVKTEQGVSRYSYTIKNLLPYRNVHVRVLVTNPEGRKEGKEVTFQDDEDVPSGIA
 AESLTFPLEDMIFLKWEEPQEPNGLITQYEISYQSISSDPVNVPGPRRTISKLRNETYHVFSNLHPG
 TTYLFSVRARTGKGFQAALTEITTNISAPSFYADMPSPLESENTITVLLRPAQGRGAPISVYQVIVE
 EERARRLRREPGGQDCFPVPLTFAALARGLVHYFGAELAASSLPEAMPFTVGDNQTYRGFWNPPLEPRK
 AYLIYFQAASHLKGETRLNCIRIARKAACKESKRPLEVSRSEEMGLILGICAGGLAVLILLGAIIVII
 RKGKPVNMTKATVNYRQEKTHMMSAVDRSFTDQSTLQEDERLGLSFMMDTHGYSTRGDQRSGGVTEASSLL
 GGSPPRCGRKGSPLYHTGQLHPAVRVADLLQHINQMKTAEYGFYKQYEFSEFFEGWDATKKKDKVKGSRQE
 PMPAYDRHRVKLHPMLGDPNADYINANYIDGYHRSNHFIATQGGPKPEMVYDFWRMVWQEHCSIVMITKL
 VEVKCSRYWPEDSDTYGDIKIMLVKTETLAEYVVRTFALERRGYSARHEVRQFHF TAWPEHGVPHYATGL
 LAFIRRVKASTPPDAGPIVIHCSAGTGRGTCYIVLDVMLDMAECEGVVDIYNCVKTLCSRRVNMIIQTEEQ
 YIFIHDAILEACLGETTIPVSEFKATYKEMIRIDPQSNSSQLREEFQTLNSVTPPLDVEECIALLPRN
 RDKNRSMDVLPDRCLPFLISTDGDSSNNYINAAL TDSYTRSAAFIVTLHPLQSTPDFWRLVYDYGCTSI
 VMLNQLNQSNSAWPCLQYWPEPGRQYGLMEVEFMSGTAD EDLVARVFRVQNISRLQEGHLLVRHFQFLR
 WSAYRDT PDSKKAFLHLLAEVDKWQAESGDGRTIVHCLNGGGRSGTFCACATVLEMIRCHNLVDVFFAAK
 TLRNYKPNMVETMDQYHFCYDVALEYLEGLESR

SGPTRRRLE - GFP Tag - V

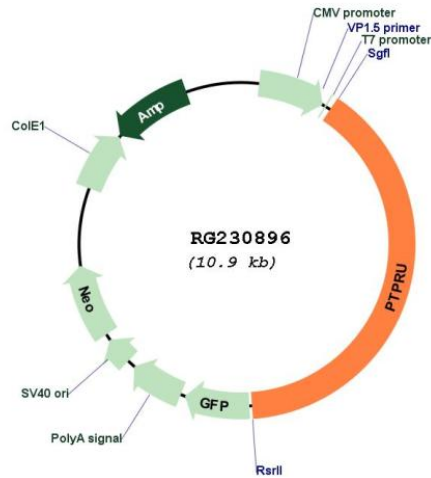
Restriction Sites: SgfI-RsrII

Cloning Scheme:

Cloning sites used for ORF Shuttling:



Plasmid Map:



ACCN: NM_001195001

ORF Size: 4299 bp

OTI Disclaimer: The molecular sequence of this clone aligns with the gene accession number as a point of reference only. However, individual transcript sequences of the same gene can differ through naturally occurring variations (e.g. polymorphisms), each with its own valid existence. This clone is substantially in agreement with the reference, but a complete review of all prevailing variants is recommended prior to use. [More info](#)

OTI Annotation: This clone was engineered to express the complete ORF with an expression tag. Expression varies depending on the nature of the gene.

Components: The ORF clone is ion-exchange column purified and shipped in a 2D barcoded Matrix tube containing 10ug of transfection-ready, dried plasmid DNA (reconstitute with 100 ul of water).

Reconstitution Method:

1. Centrifuge at 5,000xg for 5min.
2. Carefully open the tube and add 100ul of sterile water to dissolve the DNA.
3. Close the tube and incubate for 10 minutes at room temperature.
4. Briefly vortex the tube and then do a quick spin (less than 5000xg) to concentrate the liquid at the bottom.
5. Store the suspended plasmid at -20°C. The DNA is stable for at least one year from date of shipping when stored at -20°C.

RefSeq: [NM_001195001.1](#), [NP_001181930.1](#)

RefSeq Size: 5593 bp

RefSeq ORF: 4302 bp

Locus ID: 10076

UniProt ID: [Q92729](#)

Cytogenetics: 1p35.3

Protein Families: Transmembrane

Gene Summary: The protein encoded by this gene is a member of the protein tyrosine phosphatase (PTP) family. PTPs are known to be signaling molecules that regulate a variety of cellular processes including cell growth, differentiation, mitotic cycle, and oncogenic transformation. This PTP possesses an extracellular region, a single transmembrane region, and two tandem intracellular catalytic domains, and thus represents a receptor-type PTP. The extracellular region contains a meprin-A5 antigen-PTP (MAM) domain, Ig-like and fibronectin type III-like repeats. This PTP was thought to play roles in cell-cell recognition and adhesion. Studies of the similar gene in mice suggested the role of this PTP in early neural development. The expression of this gene was reported to be regulated by phorbol myristate acetate (PMA) or calcium ionophore in Jurkat T lymphoma cells. Alternatively spliced transcript variants have been reported. [provided by RefSeq, Aug 2010]