

## Product datasheet for **RG230883**

### LDL Receptor (LDLR) (NM\_001195798) Human Tagged ORF Clone

#### Product data:

Product Type:	Expression Plasmids
Product Name:	LDL Receptor (LDLR) (NM_001195798) Human Tagged ORF Clone
Tag:	TurboGFP
Symbol:	LDLR
Synonyms:	FH; FHC; FHCL1; LDLCQ2
Mammalian Cell Selection:	Neomycin
Vector:	pCMV6-AC-GFP (PS100010)
E. coli Selection:	Ampicillin (100 ug/mL)



[View online »](#)

**ORF Nucleotide Sequence:**

>RG230883 representing NM\_001195798  
 Red=Cloning site Blue=ORF Green=Tags(s)

TTTTGTAATACGACTCACTATAGGGCGGCCGGGAATTCGTCGACTGGATCCGGTACCGAGGAGATCTGCC  
 GCC**CGGATCGCC**

ATGGGGCCCTGGGGCTGAAATTGCGCTGGACCGTCGCCTTGCTCCTCGCCGCGGGGGACTGCAGTGG  
 GCGACAGATGTGAAAGAAACGAGTTCAGTGCCAAAGACGGGAAATGCATCTCCTACAAGTGGGTCTGCGA  
 TGGCAGCGCTGAGTGCCAGGATGGCTCTGATGAGTCCCAGGAGACGTGCTTGTCTGTACCTGCAAAATCC  
 GGGGACTTCAGCTGTGGGGCCGTGTCAACCGCTGCATTCCTCAGTTCCTGGAGGTGCGATGGCCAAGTGG  
 ACTGCGACAACGGCTCAGACGAGCAAGGCTGTCCCCCAAGACGTGCTCCAGGACGAGTTTCGCTGCCA  
 CGATGGGAAGTGCATCTCTCGGCAGTTCGTCTGTGACTCAGACCGGGACTGCTTGGACGGCTCAGACGAG  
 GCCTCTGCCCGGTGCTCACCTGTGGTCCCGCAGCTTCCAGTGAACAGCTCCACCTGCATCCCCCAGC  
 TGTGGCCTGCGACAACGCCCGACTGCGAAGATGGCTCGGATGAGTGGCCGACGGCTGTAGGGGTCT  
 TTAGCTGTTCCAAGGGGACAGTAGCCCCGCTCGGCCTTCGAGTCCACTGCCTAAGTGGCGAGTGCATC  
 CACTCCAGCTGGCGCTGTGATGGTGGCCCCGACTGCAAGGACAAAATCTGACGAGGAAAATGCGCTGTGG  
 CCACCTGTGCGCCGTGACGAATCCAGTGTCTGATGAAAATGCATCCATGGCAGCCGGCAGTGTGACCG  
 GGAATATGACTGCAAGGACATGAGCGATGAAGTTGGTGCCTAATGTGACACTCTGCGAGGGACCCAAC  
 AAGTTCAGTGTACAGCGGCGAATGCATACCCTGGACAAAAGTCTGCAACATGGCTAGAGACTGCCGGG  
 ACTGGTCAGATGAACCCATCAAAGAGTGGCGGACCAACGAATGCTTGGACAACAACGGCGGCTGTCCCA  
 CGTCTGCAATGACCTTAAGATCGGCTACGAGTGCCTGTGCCCCGACGGCTTCCAGCTGGTGGCCAGCGA  
 AGATCGGAAGATATCGATGAGTGTGAGGATCCCAGACACCTGCAGCCAGCTCTGCGTGAACCTGGAGGGT  
 GCTACAAGTGCCAGTGTGAGGAAGGCTTCCAGCTGGACCCACACGAAGGCTGCAAGGCTGTGGGCTC  
 CATCGCCTACCTTCTTCAACCAACCGGACGAGGTGAGGAAGATGACGCTGGACCGGAGCGAGTACACC  
 AGCCTCATCCCCAACCTGAGGAACGTGGTGCCTCTGGACACGGAGGTGGCCAGCAATAGAATCTACTGGT  
 CTGACCTGTCCCAGAGAATGATCTGCAGACCCAGCTTGACAGAGCCACGGCGTCTTCTCTATGACAC  
 CGTCATCAGCAGGGACATCCAGGCCCGCAGGGCTGGCTGTGGACTGGATCCACAGCAACATCTACTGG  
 ACCGACTGTCTGCGGCACTGTCTGTGGGATACCAAGGGCGTGAAGAGGAAAACGTTATTACGGG  
 AGAACGGCTCCAAGCCAAGGGCCATCGTGGTGGATCCTGTTTATGGCTTCATGTACTGGACTGACTGGG  
 AACTCCCAGCAAGATCAAGAAAGGGGCTGAATGGTGTGGACATCTACTCGCTGGTACTGAAAACATT  
 CAGTGGCCCAATGGCATACCCTAGATCTCCTCAGTGGCCGCTCTACTGGGTTACTCCAACTTCACT  
 CCATCTCAAGCATCGATGTCAATGGGGCAACCGGAAGACCATCTTGGAGGATGAAAAGAGGCTGGCCCA  
 CCCCTTCTCCTTGGCCGCTTTTGGAGACAAAGTATTTTGGACAGATATCATCAACGAAGCCATTTTCACT  
 GCCAACCGCTCACAGGTTCCGATGTCAACTTGTGGTGGTGGAAAACCTACTGTCCCCAGAGGATATGGTCC  
 TCTTCCACAACCTCACCCAGCCAAGAGGAGTGAAGTGGTGTGAGAGGACCACCCTGAGCAATGGCGGCTG  
 CCAGTATCTGTGCTCCTGCCCCGAGATCAACCCCACTCGCCCAAGTTTACCTGCGCCTGCCCGGAC  
 GGCATGCTGTGGCCAGGGACATGAGGAGCTGCCTCACAGAGGCTGAGGCTGCAGTGGCCACCCAGGAGA  
 CATCCACCGTCAGGCTAAAGTCACTCCACAGCCGTAAGGACACAGCACACAACCCAGGCTGTTC  
 CGACACCTCCCGGCTGCCTGGGGCCACCCTGGGCTCACCACGGTGGAGATAGTGACAATGTCTACCCAA  
 GCTCTGGGCGACGTTGCTGGCAGAGGAAATGAGAAGAAGCCAGTAGCGTGGGGCTCTGTCCATTGTCTC  
 TCCCCATCGTGTCTCTCTCTTCTTGGCTGGGGTCTTCTTCTATGGAAGAACTGGCGGCTTAAAGAA  
 CATCAACAGCATCAACTTTGACAACCCGCTCTATCAGAAGACCACAGAGGATGAGGTCCACATTTGCCAC  
 AACAGGACGGCTACAGTACCCTCGAGACAGATGGTCACTGGAGGATGACGTGGCG

**ACGGTACGCGGCCGCTCGAG** - GFP Tag - GTTTAA

**Protein Sequence:** >RG230883 representing NM\_001195798  
Red=Cloning site Green=Tags(s)

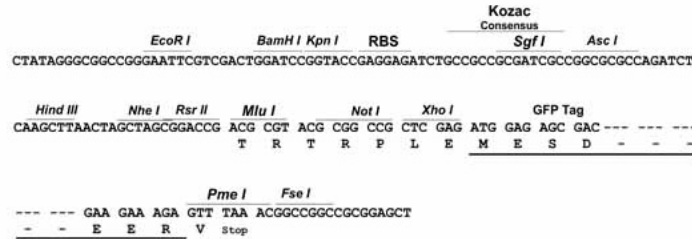
MGPWGWKLRWTVALLAAAGTAVGDR CERNEFQCQDGKCI SYKWVCDGSAECQDGSDESQETCLSVTCKS  
GDFSCGGRVNRICIPQFWRCDGQVDCDNGSDEQGCPPKTC SQDEFRCHDGKCI SRQFVCDSDRDCLDGSDE  
ASCPVLTCGPASFQCNSSTCIPQLWACDNDPDCEDGSDEWPQRCRGLYVFQGDSSPSCSAFEFHCLSGECI  
HSSWRCDGGPDCKDKSDEENCAVATCRPDEFQCS DGNCIHGSRQCDREYDCKDMSDEVGC VNVTLCEGPN  
KFKCHSGECITL DKVCNMARDCRDWSDEPIKECGTNECLDNNGGCSHVCNDLKIGYECLCPDGFQ LVAQR  
RCEDIDECQDPDTC SQLCVNLEGGYKCCQCEEGFLDPHTKACKAVGSIAYLFFTNRHEVRKMTLDRSEYT  
SLIPNLRNVVALDTEVASNRIYWS DLSQRMICSTQLDRAHGVS SYDTVISRDIQAPDGLAVDWIHSNIYW  
TDSVLGT VSVADTKGVKRKTLFRENGSKPRAIVVDPVHGFM YWTDWGTPAKIKKGLNGVDIYSLVTENI  
QWPNGITL DLLSGRLYWVDSKLHSISSIDVNGGNRKTILEDEKRLAHPFSLAVFEDKVFWDIINEAIFS  
ANRLTGS DVNLLAENLLSPEDMVL FHNLTPRGVNW CERTTLSNGGCQYLCLPAPQINPHSPKFTCACPD  
GMLLARDMR SCLTEAEAAVATQETSTVRLKVSSTAVRTQH TTTTRPVDT SRLPGATPGLTTVEIVTMSHQ  
ALGDVAGRGNEKKPSSVRAL SIVLPIVLLVFLCLGVFLLWKNWRLKNINSINF DNPVYQKTTEDEVHICH  
NQDGYSPSRQMVSLEDDVA

TRTRPLE - GFP Tag - V

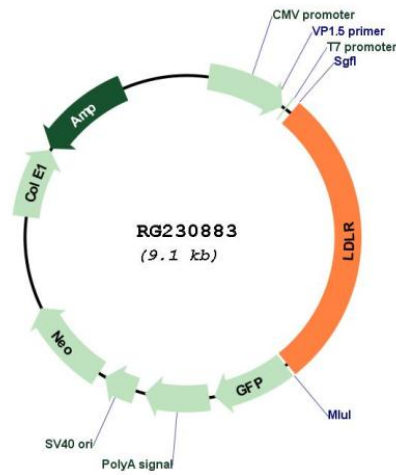
**Restriction Sites:** Sgfl-MluI

Cloning Scheme:

Cloning sites used for ORF Shutting:



Plasmid Map:



<b>ACCN:</b>	NM_001195798
<b>ORF Size:</b>	2574 bp
<b>OTI Disclaimer:</b>	The molecular sequence of this clone aligns with the gene accession number as a point of reference only. However, individual transcript sequences of the same gene can differ through naturally occurring variations (e.g. polymorphisms), each with its own valid existence. This clone is substantially in agreement with the reference, but a complete review of all prevailing variants is recommended prior to use. <a href="#">More info</a>
<b>OTI Annotation:</b>	This clone was engineered to express the complete ORF with an expression tag. Expression varies depending on the nature of the gene.
<b>Components:</b>	The ORF clone is ion-exchange column purified and shipped in a 2D barcoded Matrix tube containing 10ug of transfection-ready, dried plasmid DNA (reconstitute with 100 ul of water).
<b>Reconstitution Method:</b>	<ol style="list-style-type: none"><li>1. Centrifuge at 5,000xg for 5min.</li><li>2. Carefully open the tube and add 100ul of sterile water to dissolve the DNA.</li><li>3. Close the tube and incubate for 10 minutes at room temperature.</li><li>4. Briefly vortex the tube and then do a quick spin (less than 5000xg) to concentrate the liquid at the bottom.</li><li>5. Store the suspended plasmid at -20°C. The DNA is stable for at least one year from date of shipping when stored at -20°C.</li></ol>
<b>RefSeq:</b>	<a href="#">NM_001195798.1</a> , <a href="#">NP_001182727.1</a>
<b>RefSeq Size:</b>	5286 bp
<b>RefSeq ORF:</b>	2577 bp
<b>Locus ID:</b>	3949
<b>UniProt ID:</b>	<a href="#">P01130</a>
<b>Cytogenetics:</b>	19p13.2
<b>Protein Families:</b>	Druggable Genome, ES Cell Differentiation/IPS, Transmembrane
<b>Protein Pathways:</b>	Endocytosis
<b>Gene Summary:</b>	The low density lipoprotein receptor (LDLR) gene family consists of cell surface proteins involved in receptor-mediated endocytosis of specific ligands. Low density lipoprotein (LDL) is normally bound at the cell membrane and taken into the cell ending up in lysosomes where the protein is degraded and the cholesterol is made available for repression of microsomal enzyme 3-hydroxy-3-methylglutaryl coenzyme A (HMG CoA) reductase, the rate-limiting step in cholesterol synthesis. At the same time, a reciprocal stimulation of cholesterol ester synthesis takes place. Mutations in this gene cause the autosomal dominant disorder, familial hypercholesterolemia. Alternate splicing results in multiple transcript variants.[provided by RefSeq, Sep 2010]