

Product datasheet for **RG230881**

TGF beta Receptor III (TGFBR3) (NM_001195684) Human Tagged ORF Clone

Product data:

Product Type:	Expression Plasmids
Product Name:	TGF beta Receptor III (TGFBR3) (NM_001195684) Human Tagged ORF Clone
Tag:	TurboGFP
Symbol:	TGFBR3
Synonyms:	betaglycan; BGCAN
Mammalian Cell Selection:	Neomycin
Vector:	pCMV6-AC-GFP (PS100010)
E. coli Selection:	Ampicillin (100 ug/mL)



[View online »](#)

ORF Nucleotide Sequence:

>RG230881 representing NM_001195684
 Red=Cloning site Blue=ORF Green=Tags(s)

TTTTGTAATACGACTCACTATAGGGCGGCCGGGAATTCGTCGACTGGATCCGGTACCGAGGAGATCTGCC
 GCC**CGCATCGCC**

ATGACTTCCCATTATGTGATTGCCATCTTTGCCCTGATGAGCTCCTGTTTAGCCACTGCAGGTCCAGAGC
 CTGGTGCCTGTGGAAGTGTCACTGTCAAGTGCCTCCCATCCTGTCCAGGCCTTGATGGAGAGCTTCAC
 TGTTTTGTGAGGCTGTGCCAGCAGAGGCACAACCTGGGCTGCCACAGGAGGTGCATGTCCTGAATCTCCGC
 ACTGCGGGCCAGGGCCCTGGCCAGCTACAGAGAGAGGTCACTTCACTGAATCCCATCTCCTCAGTCC
 ACATCCACCACAAGTCTGTTGTGTTCTGCTCACTCCACACCCCCTGGTGTGGCATCTGAAGACAGA
 GAGACTTGCCACTGGGGTCTCCAGACTGTTTTGGTGTCTGAGGGTCTGTGGTCCAGTTTTATCAGCA
 AACTTCTCCTTGACAGCAGAAACAGAAGAAAGAACTCCCCCATGGAAATGAACATCTGTTAAATTGGG
 CCCGAAAAGAGTATGGAGCAGTTACTTCATTACCGAACTCAAGATAGCAAGAAACATTTATATTAAGT
 GGGGGAAGATCAAGTGTCCCTCAAAGTGAACATAGGGAAGAATTTCTCTCACTCAATTACCTTGCT
 GAGTACCTTCAACCCAAAGCAGCAGAAGGGTGTGTGATGTCCAGCCAGCCCAAGATGAGGAAGTACACA
 TCATCGAGCTAATCACCCCAACTCAACCCCTACAGTGTCTTCCAGGTGGATATAACAATTGATATAAG
 ACCTTCTCAAGAGGATCTTGAAGTGGTCAAAAATCTCATCCTGATCTTGAAGTGCAAAAAGTCTGTCAAC
 TGGGTGATCAAATCTTTTGATGTTAAGGGAAGCCTGAAAATTTGCTCCTAACAGTATTGGCTTTGGAA
 AAGAGAGTGAAAGATCTATGACAATGACCAATCAATAAGAGATGACATTCCTTCAACCCAAAGGGAATCT
 GGTGAAGTGGGCTTTGGACAATGGCTATAGTCCAATAACTTCATACAAATGGCTCCTGTGGCTAATAGA
 TTTTCTCTCGGCTTGAATAATGCAGAGGAGATGGGAGATGAGGAAGTCCACACTATTCCTCCTGAGC
 TACGGATCCTGCTGGACCTGGTCCCTGCCTGCCAGCAGAACCCGCCATCCGGGGAGGGGAAGGCCA
 AAATGGAGGCCTTCCGTTTCTTCCAGATATTTCCAGGAGAGTCTGGAATGAAGAGGGAGAAGATGGG
 CTCCTCGGCCAAAGGACCCTGTCAATCCAGCATAACAATGTTTCTGCTCAGAGAGCCAGAAGAGG
 TGCAAGGGAGCGTGGATATTGCCCTGTCTGCAATGTGACAATGAGAAGATGATCGTGGCTGTAGAAAA
 AGATTCTTTTCCAGCCAGTGGCTACTCGGGGATGGACGTCACCCTGTTGGATCCTACCTGCAAGGCCAAG
 ATGAATGGCACACACTTTGTTTGGAGTCTCCTCTGAATGGTGCAGTACTCGGCCCGGTGGTCCAGCCC
 TTGATGGTGTGGTCTACTATAACTCCATTGTGATACAGGTTCCAGCCCTTGGGGACAGTAGTGGTTGGCC
 AGATGGTTATGAAGATCTGGAGTCAAGTATAATGGATTTCCGGGAGATATGGATGAAGGAGATGCTTCC
 CTGTTACCCGACCTGAAATCGTGGTGTAAATTGCAGCCTTCCAGGAGTGGGAACCCAGCAGCTTCC
 AGGAACAGCCCCACGAAACATCACCTCAACATGGAGCTATACAACACTGACCTTTTTTGGTGCCTC
 CCAGGGCGTCTTCTGTGTCAGAGAATGGACAGTATGTTGAGGTATCTGTTACTAAGGCTGAACAA
 GAAGTGGGATTTGCCATCCAAACGTGCTTATCTCTCCATATTGCAACCCCTGATAGGATGTCTCATTACA
 CCATTATTGAGAAATTTGTCCTAAAGATGAATCTGTGAAATCTACAGTCCCAAGAGAGTGCACCTTCC
 TATCCCGCAAGCTGACATGGATAAGAAGCGATTACGCTTTGTCTCAAGCCTGTCTTCAACACCTCACTG
 CTCTTTTACAGTGTGAGCTGACGCTGTGTACGAAGATGGAGAAGCACCCCAAGTGGCTAAGTGTG
 TGCCCTCTGACGAAGCCTGCACCTCGCTGGACGCTCGATAATCTGGGCCATGATGCAGAATAAGAAGAC
 GTTCACCAAGCCCCTTGTGTGATCCACCATGAAGCAGAATCTAAAGAAAAGGTCCAAGCATGAAGGAA
 CCAAATCCAATTTCTCCACCAATTTCCATGGTCTGGACACCCTAACCGTATGGGCATTGCGTTTGCAG
 CCTTTGTGATCGGAGCACTCCTGACGGGGCCTTGTGGTACATCTATTCTCACACAGGGAGACAGCAGG
 AAGGCAGCAAGTCCCACCTCCCGCCAGCCTCGGAAAACAGCAGTGTGCCACAGCATCGGCAGCAGC
 CAGAGCACGCCTTGTCCAGCAGCAGCAGCGCC

ACGCGTACGCGGCCGCTCGAG - GFP Tag - GTTTAA

Protein Sequence: >RG230881 representing NM_001195684
 Red=Cloning site Green=Tags(s)

```

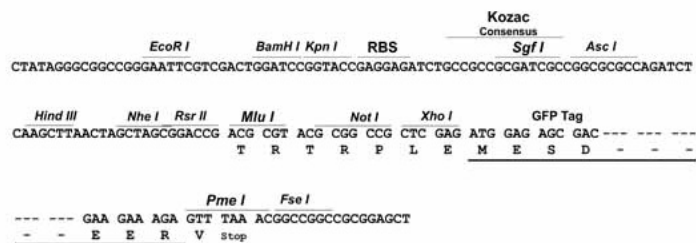
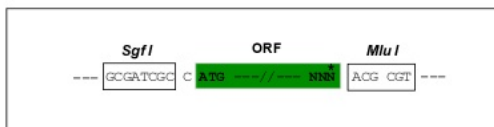
MTSHYVIAIFALMSSCLATAGPEPGALCELSVPSASHPVQALMESFTVLSGCASRGTGLPQEVHVLNLR
TAGQGPGQLQREVTLHLNPISSVHIHHKSVVFLNNSPHPLVWHLKTERLATGVSRLFLVSEGSVVQFSSA
NFSLTAETEERNFPHGNEHLLNWARKEYGAVTSFTELKIARNIYIKVGEDQVFPKCNIGKNFLSLNYLA
EYLQPKAAEGCVMSSQPQNEEVHIIELITPNSNPYSAFQVDITIDIRPSQEDLEVVKNLILILKCKKSVN
WVIKSFQVKGSLKIIAPNSIGFGKESERSMTMTKSIKDDIPSTQGNLVKWDNGYSPITSYTMAPVANR
FHLRLENNAEEMGDEEVHTIPPELRILLDPGALPALQNPPIRGGEGQNGGLPFPFPDISRRVWNEEGEDG
LPRPKDPVIPSILQFPGLREPEEVQGSVDIALSVKCDNEKMIIVAVEKDSFQASGYSMDVTLDDPTCKAK
MNGTHFVLESPLNGCGTRPRWSALDGVVYNSIYIQVPALGDSSGWPDPGYEDLESGDNGFPGDMDEGDAS
LFTRPEI VVFNC SLQQVRNPSSFQEQPHGNITFNMEL YNTDLFLVPSQGVFVSPENGHVYVEVSVTKAEQ
ELGFAIQTCFISPYSNDRMSHYTIIENICPKDES VKFYSPKRVHFP IPQADMDKKRFSFVFKPVFNTSL
LFLQCELTLCTKMEKHPQKLPKCVPPDEACTSLDASIIWAMMKNKFTFTKPLAVIHHEAESKEKGPMSKE
PNPI SPPIFHGLDTLTVMGIAFAAFVIGALLTGALWYIYSHTGETAGRQQVPTSPPASENSAAHSIGST
QSTPCSSSSTA
  
```

TRTRPLE - GFP Tag - V

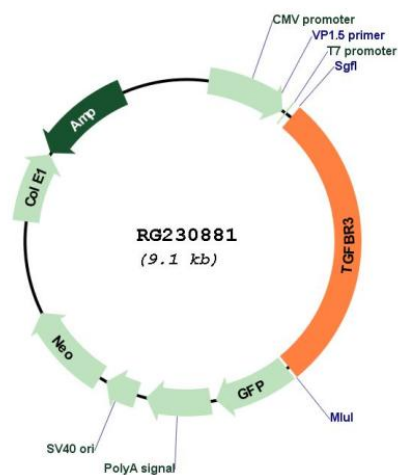
Restriction Sites: Sgfl-Mlul

Cloning Scheme:

Cloning sites used for ORF Shutting:



Plasmid Map:



ACCN:	NM_001195684
ORF Size:	2550 bp
OTI Disclaimer:	The molecular sequence of this clone aligns with the gene accession number as a point of reference only. However, individual transcript sequences of the same gene can differ through naturally occurring variations (e.g. polymorphisms), each with its own valid existence. This clone is substantially in agreement with the reference, but a complete review of all prevailing variants is recommended prior to use. More info
OTI Annotation:	This clone was engineered to express the complete ORF with an expression tag. Expression varies depending on the nature of the gene.
Components:	The ORF clone is ion-exchange column purified and shipped in a 2D barcoded Matrix tube containing 10ug of transfection-ready, dried plasmid DNA (reconstitute with 100 ul of water).
Reconstitution Method:	<ol style="list-style-type: none">1. Centrifuge at 5,000xg for 5min.2. Carefully open the tube and add 100ul of sterile water to dissolve the DNA.3. Close the tube and incubate for 10 minutes at room temperature.4. Briefly vortex the tube and then do a quick spin (less than 5000xg) to concentrate the liquid at the bottom.5. Store the suspended plasmid at -20°C. The DNA is stable for at least one year from date of shipping when stored at -20°C.
RefSeq:	NM_001195684.1 , NP_001182613.1
RefSeq Size:	6308 bp
RefSeq ORF:	2553 bp
Locus ID:	7049
UniProt ID:	Q03167
Cytogenetics:	1p22.1
Protein Families:	Druggable Genome, Secreted Protein, Transmembrane
Gene Summary:	This locus encodes the transforming growth factor (TGF)-beta type III receptor. The encoded receptor is a membrane proteoglycan that often functions as a co-receptor with other TGF-beta receptor superfamily members. Ectodomain shedding produces soluble TGFB3, which may inhibit TGFB signaling. Decreased expression of this receptor has been observed in various cancers. Alternatively spliced transcript variants encoding different isoforms have been identified for this gene.[provided by RefSeq, Sep 2010]