

Product datasheet for **RG230871**

YY1AP1 (NM_018253) Human Tagged ORF Clone

Product data:

Product Type:	Expression Plasmids
Product Name:	YY1AP1 (NM_018253) Human Tagged ORF Clone
Tag:	TurboGFP
Symbol:	YY1AP1
Synonyms:	GRNG; HCCA1; HCCA2; YY1AP
Mammalian Cell Selection:	Neomycin
Vector:	pCMV6-AC-GFP (PS100010)
E. coli Selection:	Ampicillin (100 ug/mL)



[View online »](#)

ORF Nucleotide
Sequence:

>RG230871 representing NM_018253
Red=Cloning site Blue=ORF Green=Tags(s)

TTTTGTAATACGACTCACTATAGGGCGGCCGGGAATTCGTCGACTGGATCCGGTACCGAGGAGATCTGCC
GCCGCGATCGCC

ATGGGATTCTCCAACATGGAAGATGATGGCCAGAAGAGGAGGAGCGTGTGGCTGAGCCTCAAGCTAACT
TTAACACCCCTCAAGCTCTACGGTTTGAGGAACTACTGGCCAACCTACTAAATGAACAACATCAGATAGC
GAAGGAACTATTTGAACAGCTGAAGATGAAGAAACCTTACGCCAAACAGCAGAAGGAGGTAGAGAAGGTT
AAACCCAGTGTAAAGGAAGTTCATCAGACCCTGATTCTGGACCCAGCACAAAGGAGAGACTCCAGCAGC
AGATGCAGCAGCATGTTGAGCTCTTGACACAAATCCACCTTCTTGCCACCTGCAACCCCAATCTCAATCC
GGAGGCCAGTAGCACCAGGATATGTCTTAAAGAGCTGGGAACCTTTGCTCAAAGCTCCATCGCCCTTAC
CATCAGTACAACCCCAAGTTTCAGACCCTGTTCCAACCTGTAACCTTGATGGGAGCTATGCAGCTGATTG
AAGACTTCAGCACACATGTCAGCATTGACTGCAGCCCTCATAAACTGTCAAGAAGACTGCCAATGAATT
TCCCTGTTTGCCAAAGCAAGTGCTTGGATCCTGGCCACAAGCAAGGTTTTTCATGTATCCAGAGTACTT
CCAGTGTGTTCCCTGAAGGCAAAGAATCCCCAGGATAAGATCCTCTTACCAAGGCTGAGGACAATTTGT
TAGCTTTAGGACTGAAGCATTGGAAGGACTGAGTTTCTAACCTCTAATCAGCAAGTACCTTCTAAC
CTGCAAGACTGCCCGCAACTGACAGTGAGAATCAAGAACCTCAACATGAACAGAGCTCCTGACAACATC
ATTAATTTTTATAAGAAGACCAACAGCTGCCAGTCTTAGGAAAATGCTGTGAAGAGATCCAGCCACATC
AGTGGAAGCCACCTATAGAGAGAGAAGAACCAGGCTCCCATTTCTGGTTAAAGGCCAGTCTGCCATCCAT
CCAGGAAGAACTGCGGCACATGGCTGATGGTGCTAGAGAGGTAGGAAATATGACTGGAACCACTGAGATC
AACTCAGATCAAGGCCTAGAAAAAGACAACCTCAGAGTTGGGAGTGAAACTCGGTACCCACTGCTATTGC
CTAAGGGTGTAGTCTGAAACTGAAGCCAGTTGCCGACCGTTTTCCCAAGAAGGCTTGAGACAGAAAGCG
TTCATCAGTCTGAAACCCCTCCTTATCCAACCCAGCCCTCTCTCCAGCCAGCTTCAACCTGGGAAA
ACACCAGCCCAACTCAACTCATTGAGAAGCCCTCCGAGCAAAATGGTGCTCCGGATTCTCACCCAATAC
AGCCAGCCACTGTTTTACAGACAGTTCAGGTGTCCCTCCACTGGGGTCAAGTGGAGGTGAGAGTTTTGA
GTCTCTGAGCACTGCCTGCTATGCCCTGAGGCCAGGACAAGCTTCCCTCTGTCTGAGTCCCAGACT
TTGCTCTCTTCTGCCCTTGTGCCAAGGTAATGATGCCCTCCCTGCCTCTTCCATGTTTCGAAAGCCAT
ATGTGAGACGGAGACCCTCAAAAAGAAGGGGAGCCAGGGCCTTTCGCTGTATCAAACCTGCCCTGTTAT
CCACCCTGCATCTGTTATCTTCACTGTTCTGCTACCACTGTGAAGATTGTGAGCCTTGGCGGTGGCTGT
AACATGATCCAGCCTGTCAATGCGGCTGTGGCCAGAGTCCCAGACTATCCCATCGCCACCCTCTTGG
TTAACCTACTTCTTCCCTGTCCATTGAACCCAGCCCTTGTGGCTCCTCTGTCTCACCTTAATTGT
TTCTGGCAATTCTGTGAATCTTCTATACCATCCACCCTGAAGATAAGGCCACATGAATGTGGACATT
GCTTGTGCTGTGGCTGATGGGAAAATGCCTTTCAGGGCCTAGAACCCTAATTAGAGCCCGAGAACTAT
CTCCTCTCTGCTACTGTTTTCCCAAGTGGACATAGCCAGGGCCTCCACCAGTGCATAAACAGTG
CCAAGAAGGATTGTGAGAGAAGTGCCTATCGCTGGACCGTTGTGAAAACAGAGGAGGGGAAGGCAAGCT
CTGGAGCCGCTCCCTCAGGGCATCCAGGAGTCTCTAAACAACCTTCCCCTGGGGATTTAGAGGAAGTTG
TCAAGATGGAACCTGAAGATGCTACAGAGGAAATCAGTGGATTCTT

ACGCGTACGCGGCCGCTCGAG - GFP Tag - GTTTAA

Protein Sequence: >RG230871 representing NM_018253
 Red=Cloning site Green=Tags(s)

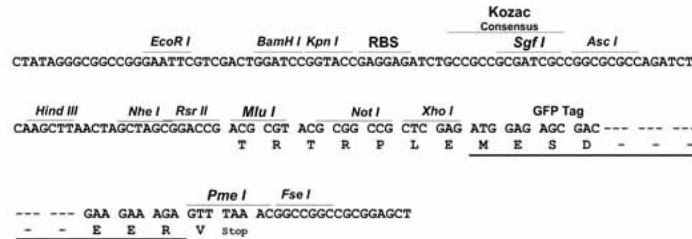
MGFSNMEDDGPEEEERVAEPQANFNTPQALRFEELLANLLNEQHQIAKELFEQLKMKKPSAKQQKEVEKV
 KPQCKEVHQTLILDPAQRKRLQQMQQHVQLL TQIHLLATCNPNLNPEASSTRICKELGTFAQSSIALH
 HQYNPKFQTLFQPCNLMGAMQLIEDFSTHVSIDCSPHKTVKKTANEFPCLPKQVAVILATSKVFMPELL
 PVCSLKAKNPQDKILFTKAEDNLLALGLKHFEGTEFLNPLISKYLLTCKTARQLTVRIKLNLMNRAPDNI
 IKFYKKTQQLPVLGKCCEEIQPHQWKPPIEREEHRLPFWLKASLPSIQEELRHMADGAREVGNMTGTTEI
 NSDQGLEKDNSELGSETRYPLLLPKGVVLKLPVADRFPKKAWRQKRSSVLKPLLIQPSPLQPSFNPGK
 TPAQSTHSEAPPSKMLRIPHPIQPATVLQTVPGVPLGVSGGESFESPAALPAMPPEARTSFPLSESQT
 LLSSALVPKVMMPSPASSMFRKPYVRRRPSKRRGARAFRCIKPAPVIHPASVIFTVPATTVKIVSLGGGC
 NMIQPVNAAVAQSPQTIPIATLLVNPTSFCPLNQPLVASSVSPLIVSGNSVNLPIPSTPEDKAHMNVDI
 ACAVADGENAFQGLEPKLEPQELSPLSATVFPKVEHSPGPPVVKQCQEGLSSENSAYRWTVVKTEEGRQA
 LEPLPQGIQESLNNSSPGDLEEVVKMEPEDATEEISGFL

TRTRPLE - GFP Tag - V

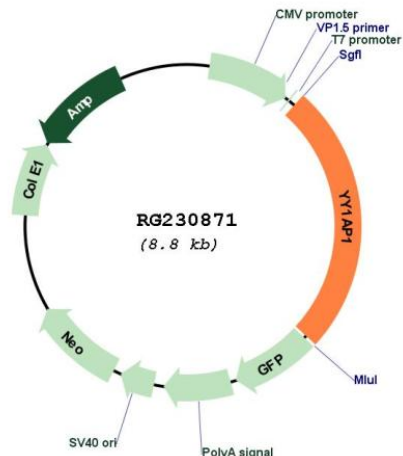
Restriction Sites: SgfI-MluI

Cloning Scheme:

Cloning sites used for ORF Shutting:



Plasmid Map:



ACCN: NM_018253

ORF Size: 2217 bp

OTI Disclaimer: The molecular sequence of this clone aligns with the gene accession number as a point of reference only. However, individual transcript sequences of the same gene can differ through naturally occurring variations (e.g. polymorphisms), each with its own valid existence. This clone is substantially in agreement with the reference, but a complete review of all prevailing variants is recommended prior to use. [More info](#)

OTI Annotation: This clone was engineered to express the complete ORF with an expression tag. Expression varies depending on the nature of the gene.

Components: The ORF clone is ion-exchange column purified and shipped in a 2D barcoded Matrix tube containing 10ug of transfection-ready, dried plasmid DNA (reconstitute with 100 ul of water).

Reconstitution Method:

1. Centrifuge at 5,000xg for 5min.
2. Carefully open the tube and add 100ul of sterile water to dissolve the DNA.
3. Close the tube and incubate for 10 minutes at room temperature.
4. Briefly vortex the tube and then do a quick spin (less than 5000xg) to concentrate the liquid at the bottom.
5. Store the suspended plasmid at -20°C. The DNA is stable for at least one year from date of shipping when stored at -20°C.

RefSeq: [NM_018253.3](#), [NP_060723.2](#)

RefSeq Size: 2833 bp

RefSeq ORF: 2220 bp

Locus ID: 55249

UniProt ID: [Q9H869](#)

Cytogenetics: 1q22

Gene Summary: The encoded gene product presumably interacts with YY1 protein; however, its exact function is not known. Alternative splicing results in multiple transcript variants encoding different isoforms. [provided by RefSeq, Jul 2008]