

Product datasheet for **RG230866**

YY1AP1 (NM_139121) Human Tagged ORF Clone

Product data:

Product Type:	Expression Plasmids
Product Name:	YY1AP1 (NM_139121) Human Tagged ORF Clone
Tag:	TurboGFP
Symbol:	YY1AP1
Synonyms:	GRNG; HCCA1; HCCA2; YY1AP
Mammalian Cell Selection:	Neomycin
Vector:	pCMV6-AC-GFP (PS100010)
E. coli Selection:	Ampicillin (100 ug/mL)



[View online »](#)

ORF Nucleotide
Sequence:

>RG230866 representing NM_139121
Red=Cloning site Blue=ORF Green=Tags(s)

TTTTGTAATACGACTCACTATAGGGCGGCCGGAATTCGTCGACTGGATCCGGTACCGAGGAGATCTGCC
GCC**CGCATCGCC**

ATGGAAGATCTGTTTGAACCTTTCCAAGATGAGATGGATTCTCCAACATGGAAGATGATGGCCAGAAG
AGGAGGAGCGTGTGGCTGAGCCTCAAGCTAACTTTAACACCCCTCAAGCTCTACGGTTTGAGGAACACT
GGCCAACCTACTAAATGAACAACATCAGATAGCGAAGGAAGTATTTGAACAGCTGAAGATGAAGAACT
TCAGCCAAACAGCAGAAGGAGGTAGAGAAGTTAAACCCAGTGAAGGAAGTTCATCAGACCCTGATTC
TGGACCCAGCACAAAGGAAGAGACTCCAGCAGCAGATGCAGCAGCATGTTGAGCTTTGACACAAATCCA
CCTTCTTGCCACCTGCAACCCCAATCTCAATCCGGAGGCCAGTAGCACCAGGATATGTCTTAAAGAGCTG
GGAACCTTTGCTCAAAGCTCCATCGCCCTTACCATCAGTACAACCCCAAGTTTCAGACCCTGTTCCAAC
CCTGTAACCTGATGGGAGCTATGCAGCTGATTGAAGACTTCAGCACACATGTCAGCATTGACTGCAGCCC
TCATAAACTGTCAAGAAGACTGCCAATGAATTTCCCTGTTTGCCAAAGCAAGTGGCTTGGATCCTGGCC
ACAAGCAAGGTTTTTCATGTATCCAGAGTACTTCCAGTGTGTTCCCTGAAGGCAAAGAATCCCAGGATA
AGATCCTCTTACCAAGGCTGAGGACAATTTGTTAGCTTTAGGACTGAAGCATTTTGAAGGGACTGAGTT
TCTTAACCTCTAATCAGCAAGTACCTTCTAACCTGCAAGACTGCCCGCCAACTGACAGTGAGAATCAAG
AACCTCAACATGAACAGAGCTCCTGACAACATCATTAAATTTTATAAGAAGACCAACAGCTGCCAGTCC
TAGGAAAATGCTGTGAAGAGATCCAGCCACATCAGTGGAGCCACCTATAGAGAGAGAAGAACACCGGCT
CCCATTCTGGTTAAAGGCCAGTCTGCCATCCATCCAGGAAGAAGTGGCCACATGGCTGATGGTGTAGA
GAGGTAGGAAATGACTGGAACCACTGAGATCAACTCAGATCAAGGCCTAGAAAAGACAACACTCAGAGT
TGGGGAGTGAAACTCGGTACCCACTGCTATTGCCTAAGGGTGTAGTCTGAAACTGAAGCCAGTTGCCGA
CGTTTTCCCAAGAAGGCTTGGAGACAGAAGCGTTCATCAGTCCCTGAAACCCCTCCTTATCCAACCCAGC
CCCTCTCTCCAGCCAGCTTCAACCTGGGAAAACACCAGCCCAATCAACTCATTGAGAAGCCCTCCGA
GCAAAAATGGTGTCCGGATTCTCACCCAATACAGCCAGCCACTGTTTTACAGACAGTTCAGGTGTCCC
TCCACTGGGGTCAAGTGGAGGTGAGAGTTTTGAGTCTCCTGCAGCACTGCCTGCTATGCCCCCTGAGGCC
AGGACAAGCTTCCCTCTGTCTGAGTCCCAGACTTTGCTCTCTTCTGCCCTGTGCCCAAGGTAATGATGC
CCTCCCCTGCCTTCTCATGTTTCGAAAGCCATATGTGAGACGGAGACCCTCAAAAAGAAGGGGAGCCAG
GGCCTTTCGCTGTATCAAACCTGCCCTGTTATCCACCCTGCATCTGTTATCTTCACTGTTCTCTGTACC
ACTGTGAAGATTGTGAGCCTTGGCGGTGGCTGTAACATGATCCAGCCTGTCAATGCGGCTGTGGCCAGA
GTCCCCAGACTATCCCATCGCCACCCTTGGTTAACCTACTTCCCTCCCCTGTCCATTGAACCAGCC
CCTTGTGGCCTCCTCTGTCTCACCTTAATTGTTTCTGGCAATTCTGTGAATCTTCTATACCATCCACC
CCTGAAGATAAGGCCACATGAATGTGGACATTGCTTGTGCTGTGGCTGATGGGGAAAATGCCTTTCAGG
GCCTAGAACCCTAATTAGAGCCCCAGGAAGTATCTCCTCTCTGCTACTGTTTTCCCAAGTGGAAACA
TAGCCCAGGGCCTCCACCAGTCGATAAACAGTGCCTAAGAAGGATTGTGAGAGAACAGTGCCTATCGCTGG
ACCGTTGTGAAAACAGAGGAGGGAAGCAAGCTCTGGAGCCGCTCCCTCAGGGCATCCAGGAGTCTCTAA
ACAACCTTCCCCTGGGATTTAGAGGAAGTTGTCAAGATGGAACCTGAAGATGCTACAGAGGAAATCAG
TGGATTTCTT

ACGCGTACGCGGCCGCTCGAG - GFP Tag - GTTTAA

Protein Sequence: >RG230866 representing NM_139121
 Red=Cloning site Green=Tags(s)

```

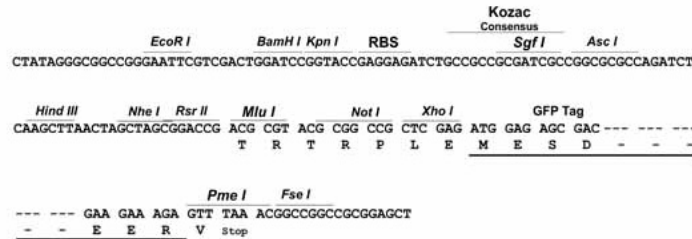
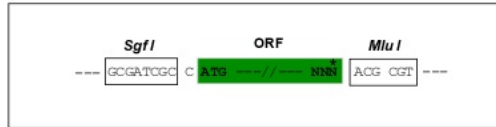
MEDLFETFQDEMGSNMEDDGPEEEERVAEPQANFNTPQALRFEELLANLLNEQHQIAKELFEQLKMKKP
SAKQQKEVEKVKPQCKEVHQTLLDPAQRKRLQQMQQHVQLLTQIHLLATCNPNLNPEASSTRICKEL
GTFQAQSSIALHHQYNPKFQTLFQPCNLGMAMQLIEDFSTHVSIDCSPHKTVKKTANEFPCLPKQVAWILA
TSKVFMYPELLPVCSLKAKNPQDKILFKAEDNLLALGLKHFEGTEFLNPLISKYLLTCKTARQLTVRIK
NLNMNRAPDNIKIFYKKTQLPVLGKCCEEIQPHQWKPPIEREEHRLPFWLKASLPSIQEELRHMADGAR
EVGNMTGTTEINSDQGLEKDNSELGSETRYPLLLPKGVVLKLPVADRFPKKAWRQKRSSVLKPLLIQPS
PSLQPSFNPQKTPAQSTHSEAPPSKMLVLRIPHIQPATVLTQVPGVPLGVSGGESFESPAALPAMPPEA
RTSFPLSESQLTLLSSAPVPKVMMPSPASSMFRKPYVRRRRSKRRGARAFRCIKPAPVIHPASVIFTVPAT
TVKIVSLGGGCNMIQPVNAAVAQSPQTIPIATLLVNPTSFPCPLNQPLVASSVSPLIVSGNSVNLPIPST
PEDKAHMNVDIACAADGENAFQGLEPKLEPQELSPLSATVFPKVEHSPGPPVVDKQCQEGLSENSAYRW
TVVKTEEGRQALEPLPQGIQESLNNSSPGDLEEVKMEPEDATEEISGFL
  
```

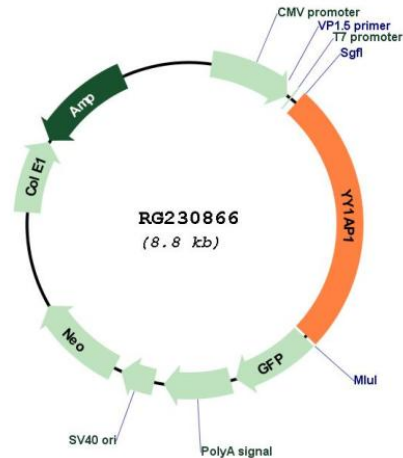
TRTRPLE - GFP Tag - V

Restriction Sites: SgfI-MluI

Cloning Scheme:

Cloning sites used for ORF Shutting:



Plasmid Map:


ACCN: NM_139121

ORF Size: 2253 bp

OTI Disclaimer: The molecular sequence of this clone aligns with the gene accession number as a point of reference only. However, individual transcript sequences of the same gene can differ through naturally occurring variations (e.g. polymorphisms), each with its own valid existence. This clone is substantially in agreement with the reference, but a complete review of all prevailing variants is recommended prior to use. [More info](#)

OTI Annotation: This clone was engineered to express the complete ORF with an expression tag. Expression varies depending on the nature of the gene.

Components: The ORF clone is ion-exchange column purified and shipped in a 2D barcoded Matrix tube containing 10ug of transfection-ready, dried plasmid DNA (reconstitute with 100 ul of water).

Reconstitution Method:

1. Centrifuge at 5,000xg for 5min.
2. Carefully open the tube and add 100ul of sterile water to dissolve the DNA.
3. Close the tube and incubate for 10 minutes at room temperature.
4. Briefly vortex the tube and then do a quick spin (less than 5000xg) to concentrate the liquid at the bottom.
5. Store the suspended plasmid at -20°C. The DNA is stable for at least one year from date of shipping when stored at -20°C.

RefSeq: [NM_139121.2](#), [NP_620832.1](#)

RefSeq Size: 2705 bp

RefSeq ORF: 2055 bp

Locus ID: 55249

UniProt ID: [Q9H869](#)

Cytogenetics: 1q22

Gene Summary: The encoded gene product presumably interacts with YY1 protein; however, its exact function is not known. Alternative splicing results in multiple transcript variants encoding different isoforms. [provided by RefSeq, Jul 2008]