

Product datasheet for **RG230857**

Enconsin (MAP7) (NM_001198618) Human Tagged ORF Clone

Product data:

Product Type:	Expression Plasmids
Product Name:	Enconsin (MAP7) (NM_001198618) Human Tagged ORF Clone
Tag:	TurboGFP
Symbol:	MAP7
Synonyms:	E-MAP-115; EMAP115
Mammalian Cell Selection:	Neomycin
Vector:	pCMV6-AC-GFP (PS100010)
E. coli Selection:	Ampicillin (100 ug/mL)



[View online »](#)

ORF Nucleotide Sequence:

>RG230857 representing NM_001198618
 Red=Cloning site Blue=ORF Green=Tags(s)

TTTTGTAATACGACTCACTATAGGGCGGCCGGGAATTCGTCGACTGGATCCGGTACCGAGGAGATCTGCC
 GCC**CGGATCGCC**

ATGGCGGAGCTAGGAGCTGGCGGCGACGGCCACAGGGGCGGCGACGGCGCAGTGCGAAGCGAAACAGCAC
 CCGACAGCTACAAAGTGAAGATAAGAAAAATGCCTCCAGCCGCCCTGCCTCTGCAATTTACGACAAAA
 TAACAACCACTCAGGAAATAAACAGACCTCCGCCTGTGTTACGTGTTGATGACCGGCAGCGGCTGGCC
 CGGGAGCGACGTGAGGAACGGGAGAAACAGCTAGCTGCAAGAGAAATAGTGTGGTTAGAAAGAGAAGAGC
 GAGCCAGGCGACTACGAGAAGCACCTGGAAGAGCGGAAGAAGAGGTTGGAGGAGCAGAGGCAGAAAGGA
 GGAGCGGAGGAGGCTGCTGTGGAGGAGAAGCGGAGGCAGAGACTTGAGGAGGACAAAGAAGCCACGAA
 GCTGTTGTACGGCGACAATGAAAGGAGCCAGAAGCCAAAACAGAAGCATAACCGTTGGTCGTGGGGAG
 GCTCTCCATGGGAGCCCTAGCATCCACAGTGCAGATCCAGACAGGCGGTGAGTTCCACCATGAATCT
 TTCGAAATATGTTGATCCCGTCATTAGCAAGCGGCTCTCTCTTCATCTGCAACTTTACTAAATTCTCCA
 GATAGAGCTCGCCGCCTGCAGCTCAGCCATGGGAGAGCAGCGTTGTTAACAGACTCCTGACGCCACAC
 ATTCGTTCTGGCCAGAAGTAAAAGCACAGCTGCCTTGTCTGGAGAAGCAGCATCTTGACGCCCATCAT
 CATGCCCTACAAAGCTGCACACTCTAGAAATTCGATGGATCGACCAAACTCTTTGTAACACCACCTGAG
 GGCTCTTCTCGCAGGAGGATCATTATGGCACAGCGAGCTATAAAAAAGAAAGAGAGAGAGAAAAATGTAC
 TCTTCTCACATCTGGCACCCGAAGGGCTGTATCTCCATCTAATCCCAAAGCAAGACAACCCAGCTCGCTC
 CCGACTTTGGCTCCCGTCCAAGTCTCTTCTCATTGCTGCGCACACCCAGACCGACATCCTCCTTGCCA
 CCCGGCTCAGTCAAAGCTGCTCCTGCTCAGGTCGGGCCCCATCCCCGGCAACATCCGCCCTGTCAAGA
 GGGAAGTCAAAGTGGAGCCTGAGAAGAAAGATCCTGAGAAGGAACCTCAGAAAGTTGCCAATGAGCCCTC
 ACTAAAGGGCAGAGCACCTTTAGTGAAGGTAGAAGAACCCACAGTTGAAGAGCGGACACCTGCTGAACCA
 GAAGTTGGCCCTGCTGCTCCAGCCATGGCCCCAGCTCCAGCCTCGGCCCCAGCTCCAGCCTCGGCCCCAG
 CTCCAGCCCCGTCCCCACCCAGCCATGGTCTCAGCCCCGTATCCACTGTGAATGCCAGTGCTTCTGT
 TAAGACTTCTGCAGGCACCACCGACCCAGAGGAGGCCACAAGGCTTCTAGCTGAGAAGAGGGCGCTGGCC
 CGAGAGCAGAGAGAAAAGGAAGAAAGGGAGAGGAGGGAGCAGGAAGAGCTTGAAAGACAAAAGAGAGAGG
 AATTGGCTCAACGTGTGGCTGAAGAGAGGACGACTCGCCGTGAGGAGGAGTGCAGCAGGCTGGAAGCCGA
 GCAGGCCCGGGAAGGAGGAGCAGCTGCAGCGCAGGCGGAGGAGCGGGCGCTGCGCGAGTGGGAGGAG
 GCAGAGCGGCCAGAGGCAGAAAGAAGAAGCTCGCGTTCGTGAAGAAGCAGAGAGGGTCCGGCAGG
 AACGAGAGAAGCATTTCAGAGAGAAGCAAGAGCGCCTGGAGAGAAAGAGCGACTTGAGGAGATTAT
 GAAAAGAACCAGGAGAACAGAAGCTACAGATAAGAAAACAGTGATCAGAGAAACGGTGATATAGCCAAG
 GGAGCTCTCACTGGAGGAACAGAGGTGTCTGCACTTCCATGTACAACAAACGCTCCGGGAAATGAAAGC
 CAGTTGGTAGCCACATGTGGTTACCTCACACAGTCAAAGTGACAGTGGAGAGCACTCCCGATTGGAA
 AAAACAACCAATGAAAATGGTGTATCTGTTTCAAGTAAAATTTTGAAGAAATTATAAATTACCCATT
 GGATCTAAACCATCCAGATTAGATGTCACCAACAGTGAGAGCCCAGAAATTCCTTTGAATCCAATTTGG
 CCTTTGATGAAGGGACACTTGGGCCCTGCCTCAGGTAGATGGTGTTCAGACACAGCAGACTGCAGA
 AGTTATA

ACGCGTACGCGGCCGCTCGAG - GFP Tag - GTTTAA

Protein Sequence: >RG230857 representing NM_001198618
 Red=Cloning site Green=Tags(s)

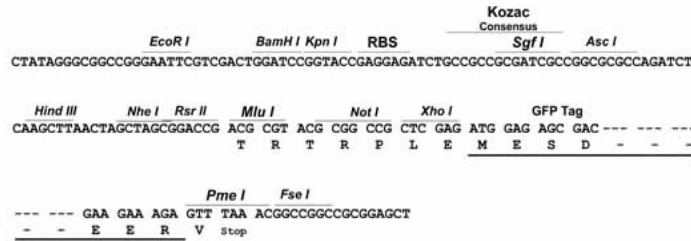
MAELGAGGDGHRGGDGAVRSETAPDSYKVQDKKNASSRPASAI SGQNNNHSGNKPDP PPPVLRVDDRQLA
 RERREEREKQLAAREIVWLEREERARQHYEKHLERKKRLEEQRQKEERRRAAVEEKRRQRL EEDKERHE
 AVVRRTMERSQPKPKQKHNRSWGGSLHGSPSIHSADPDRRSVSTMNLSKYVDPVISKRLSSSSATLLNSP
 DRARRLQLSPWESSVVNRLLTPTHSFLARSKSTAALSGEAASCSP IIMPYKAAHSRNSMDRPFKFVTPPE
 GSSRRRIIHGTASYKKERENVLFLTSGTRRAVSPSNPKARQPARSRLWLP SKSLPHLPGTPRPTSSLP
 PGSYKAAAPAQVRPPSPGNIRPVKREVKVEPEKKDPEKEPQK VANEPSLKGRAPLVKVEEATVEERTPAEP
 EVGPAAPAMAPASAPAPASAPAPAPVPTPAMVSAPSSTVNASASVKTSAGTTDPEEATRL LAEKRRLA
 REQREKEERERREQEELERQKREELAQRVAEERTTRREEE SRLEAEQAREKEEQ LQRQAEEERALREWEE
 AERAQRQKEEEARVREEAERVQREREKHFQREEQERLERKKRLEEIMKRRTRTEATDKKTS DQRNGDI AK
 GALTGGEVSALPCTTNAPGNGKPVGSPHVVTS HQSKVTVESTPDLEKQPNENGVS VQNFEEIINLPI
 GSKPSRLDVTNSESPEIPLNPILAFDDEGTLGPLQVDGVQTQQTAEVI

TRTRPLE - GFP Tag - V

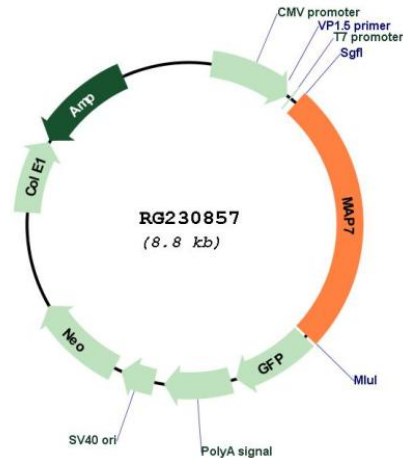
Restriction Sites: SgfI-MluI

Cloning Scheme:

Cloning sites used for ORF Shutting:



Plasmid Map:



ACCN: NM_001198618

ORF Size: 1809 bp

OTI Disclaimer: The molecular sequence of this clone aligns with the gene accession number as a point of reference only. However, individual transcript sequences of the same gene can differ through naturally occurring variations (e.g. polymorphisms), each with its own valid existence. This clone is substantially in agreement with the reference, but a complete review of all prevailing variants is recommended prior to use. [More info](#)

OTI Annotation: This clone was engineered to express the complete ORF with an expression tag. Expression varies depending on the nature of the gene.

Components: The ORF clone is ion-exchange column purified and shipped in a 2D barcoded Matrix tube containing 10ug of transfection-ready, dried plasmid DNA (reconstitute with 100 ul of water).

Reconstitution Method:

1. Centrifuge at 5,000xg for 5min.
2. Carefully open the tube and add 100ul of sterile water to dissolve the DNA.
3. Close the tube and incubate for 10 minutes at room temperature.
4. Briefly vortex the tube and then do a quick spin (less than 5000xg) to concentrate the liquid at the bottom.
5. Store the suspended plasmid at -20°C. The DNA is stable for at least one year from date of shipping when stored at -20°C.

RefSeq: [NM_001198618.1](#), [NP_001185547.1](#)

RefSeq Size: 4375 bp

RefSeq ORF: 1812 bp

Locus ID: 9053

UniProt ID: [Q14244](#)

Cytogenetics: 6q23.3

Protein Families: Druggable Genome

Gene Summary: The product of this gene is a microtubule-associated protein that is predominantly expressed in cells of epithelial origin. Microtubule-associated proteins are thought to be involved in microtubule dynamics, which is essential for cell polarization and differentiation. This protein has been shown to be able to stabilize microtubules, and may serve to modulate microtubule functions. Studies of the related mouse protein also suggested an essential role in microtubule function required for spermatogenesis. Multiple alternatively spliced transcript variants encoding different isoforms have been found for this gene. [provided by RefSeq, Oct 2010]