

Product datasheet for **RG230856**

FMRP (FMR1) (NM_001185082) Human Tagged ORF Clone

Product data:

Product Type:	Expression Plasmids
Product Name:	FMRP (FMR1) (NM_001185082) Human Tagged ORF Clone
Tag:	TurboGFP
Symbol:	FMR1
Synonyms:	FMRP; FRAXA; POF; POF1; POFX
Mammalian Cell Selection:	Neomycin
Vector:	pCMV6-AC-GFP (PS100010)
E. coli Selection:	Ampicillin (100 ug/mL)



[View online »](#)

ORF Nucleotide Sequence:

>RG230856 representing NM_001185082
 Red=Cloning site Blue=ORF Green=Tags(s)

TTTTGTAATACGACTCACTATAGGGCGGCCGGAATTCGTCGACTGGATCCGGTACCGAGGAGATCTGCC
 GCC**CGGATCGCC**

ATGGAGGAGCTGGTGGTGAAGTGCAGGCTCCAATGGCGCTTCTACAAGGCATTTGTAAGGATGTTCT
 ATGAAGATTCAATAACAGTTGCATTTGAAAACAACCTGGCAGCCTGATAGGCAGATTCCATTTTCATGATGT
 CAGATTCACACCTCCTGTAGGTTATAATAAAGATATAAATGAAAGTGATGAAGTTGAGGTGATTCCAGA
 GCAAAATGAAAAGAGCCTTGCTGTTGGTGGTTAGCTAAAGTGAGGATGATAAAGGGTGAGTTTTATGTGA
 TAGAATATGCAGCATGTGATGCAACTTACAATGAAATTGTACAATTGAACGTCTAAGATCTGTTAATCC
 CAACAACTGCCACAAAAGATACTTTCCATAAGATCAAGCTGGATGTGCCAGAAGACTACGGCAAATG
 TGTGCCAAAGAGGCGGCACATAAGGATTTAAAAAGGCAGTTGGTGCCTTTCTGTAACCTATGATCCAG
 AAAATTATCAGCTTGTCATTTTGTCCATCAATGAAGTCACTCAAAGCGAGCACATATGCTGATTGACAT
 GCACTTTTCGGAGTCTGCGCACTAAGTTGTCTCTGATAATGAGAAATGAAGAAGCTAGTAAGCAGCTGGAG
 AGTTCAAGGCAGCTTGCCTCGAGATTTTCATGAACAGTTTATCGTAAGAGAAGATCTGATGGGTCTAGCTA
 TTGGTACTCATGGTGCTAATATTCAGCAAGCTAGAAAAGTACCTGGGGTCACTGCTATTGATCTAGATGA
 AGATACCTGCACATTTTCATTTTATGGAGAGGATCAGGATGCAGTGAAAAAGCTAGAAGCTTTCTCGAA
 TTTGCTGAAGATGTAATACAAGTTCCAAGGAAGTCTAGTAGGCAAAGTAAAGGAAAAATGGAAAGCTGA
 TTCAGGAGATTGTGGACAAGTCAAGGAGTTGTGAGGGTGAAGGATGAGGCTGAAAAATGAGAAAAATGTTCC
 ACAAGAAGAGGAAATATGCCACCAATTCCTTCTTCCAATAATTCAAGGGTTGGACCTAATGCCCA
 GAAGAAAAAACATTTAGATATAAAGGAAAACAGCACCCATTTTCTCAACCTAACAGTACAAAAGTCC
 AGAGGGGTATGGTACCATTTGTTTTGTGGGAACAAAGGACAGCATCGCTAATGCCACTGTTCTTTTGGGA
 TTATCACCTGAACATTTTAAAGGAAGTAGACCAGTTGCGTTTGGAGAGATTACAAATTGATGAGCAGTTG
 CGACAGATTGGAGCTAGTTCTAGACCACCACCAATCGTACAGATAAGGAAAAAGCTATGTGACTGATG
 ATGGTCAAGGAATGGTTCGAGGTAGTAGACCTTACAGAAATAGGGGGCACGGCAGACGCGGTCTGGATA
 TACTTCAGCTCCAACAGAGGAAGAGAGGGAGGCTTCTGCGCAGAGGAGACGGACGGCGGCGTGGAGGG
 GGAGGAAGAGGACAAGGAGGAAGAGGACGTGGAGGAGGCTTCAAAGGAAACGACGATCACTCCCGAACAG
 ATAATCGTCCACGTAATCCAAGAGAGGCTAAAGGAAGAACAACAGATGGATCCCTCAGATCAGAGTTGA
 CTGCAATAATGAAAGGAGTGTCCACACTAAAACATTACAGAATACCTCCAGTGAAGGTAGTCGGCTCGCC
 ACGGGTAAAGATCGTAACCAGAAGAAAGAGAAGCCAGACAGCGTGGATGGTCAGCAACCACTCGTGAATG
 GATACCC

ACGCGTACGCGGCCGCTCGAG - GFP Tag - GTTTAA

Protein Sequence:

>RG230856 representing NM_001185082
 Red=Cloning site Green=Tags(s)

MEELVVEVRGNSGAFYKAFVKDVHEDSITVAFENWQPDQRQIPFHDVRFPPPVGVNKGNDINESDEVEVYSR
 ANEKEPCCWLLAKVRMIKGEFYVIEYAACDATYNEIVTIERLRVSNPNKPATKDTFHKIKLDVPEDLRQM
 CAKEAAHKDFKAVGAFSVTYDPENYQLVILSINEVTSKRAHMLIDMHFRSLRKLKSLIMRNEEASKQLE
 SSRQLASRFHEQFIVREDLMGLAIGTHGANIQARKVPGVTAIDLDEDTCTFHIVGEDQDAVKKARSFLE
 FAEDVIQVPRNLVGKVIKNGKLIQEIVDKSGVVRVRIEAENEKNVPQEEEIMPNSLPSNNSRVGNAP
 EEKHLDIKENSTHFSQPNSTKVQRGMVFPVFGTKDSIANATVLLDYHLNLYLKEVDQLRLERLQIDEQL
 RQIGASSRPPNRTDKEKSYVTDDGQGMGRSRPYRNRGHRRGPGYTSAPTEEERESFLRRGDGRRRGG
 GGRGQGGRRGGGFKGNDHRSRTDNRPRNPREAKGRTTDGSLQIRVDCNNERSVHTKTLQNTSSEGSRRL
 TGKDRNQKKEKPDSDVGGQPLVNGVP

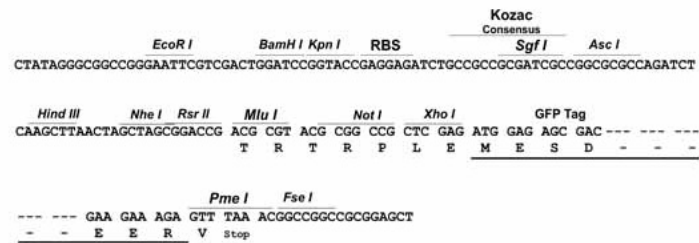
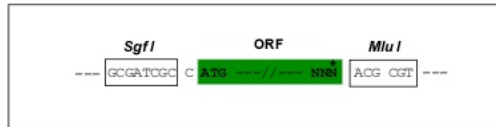
TRTRPLE - GFP Tag - V

Restriction Sites:

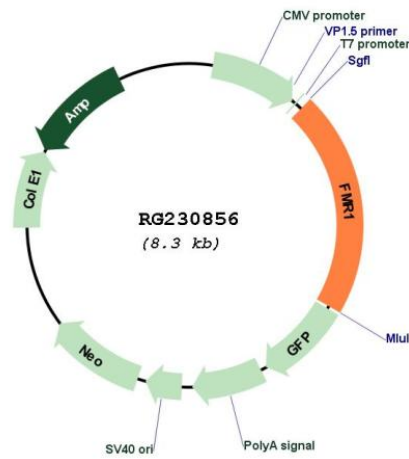
Sgfl-MluI

Cloning Scheme:

Cloning sites used for ORF Shutting:



Plasmid Map:



ACCN: NM_001185082

ORF Size: 1758 bp

OTI Disclaimer:	The molecular sequence of this clone aligns with the gene accession number as a point of reference only. However, individual transcript sequences of the same gene can differ through naturally occurring variations (e.g. polymorphisms), each with its own valid existence. This clone is substantially in agreement with the reference, but a complete review of all prevailing variants is recommended prior to use. More info
OTI Annotation:	This clone was engineered to express the complete ORF with an expression tag. Expression varies depending on the nature of the gene.
Components:	The ORF clone is ion-exchange column purified and shipped in a 2D barcoded Matrix tube containing 10ug of transfection-ready, dried plasmid DNA (reconstitute with 100 ul of water).
Reconstitution Method:	<ol style="list-style-type: none">1. Centrifuge at 5,000xg for 5min.2. Carefully open the tube and add 100ul of sterile water to dissolve the DNA.3. Close the tube and incubate for 10 minutes at room temperature.4. Briefly vortex the tube and then do a quick spin (less than 5000xg) to concentrate the liquid at the bottom.5. Store the suspended plasmid at -20°C. The DNA is stable for at least one year from date of shipping when stored at -20°C.
RefSeq:	NM_001185082.2
RefSeq Size:	4273 bp
RefSeq ORF:	1761 bp
Locus ID:	2332
UniProt ID:	Q06787
Cytogenetics:	Xq27.3
Protein Families:	Druggable Genome
Gene Summary:	The protein encoded by this gene binds RNA and is associated with polysomes. The encoded protein may be involved in mRNA trafficking from the nucleus to the cytoplasm. A trinucleotide repeat (CGG) in the 5' UTR is normally found at 6-53 copies, but an expansion to 55-230 repeats is the cause of fragile X syndrome. Expansion of the trinucleotide repeat may also cause one form of premature ovarian failure (POF1). Multiple alternatively spliced transcript variants that encode different protein isoforms and which are located in different cellular locations have been described for this gene. [provided by RefSeq, May 2010]