

Product datasheet for **RG230853**

CES3 (NM_001185177) Human Tagged ORF Clone

Product data:

Product Type:	Expression Plasmids
Product Name:	CES3 (NM_001185177) Human Tagged ORF Clone
Tag:	TurboGFP
Symbol:	CES3
Synonyms:	ES31
Mammalian Cell Selection:	Neomycin
Vector:	pCMV6-AC-GFP (PS100010)
E. coli Selection:	Ampicillin (100 ug/mL)



[View online »](#)

ORF Nucleotide Sequence:

>RG230853 representing NM_001185177
 Red=Cloning site Blue=ORF Green=Tags(s)

TTTTGTAATACGACTCACTATAGGGCGGCCGGGAATTCGTCGACTGGATCCGGTACCGAGGAGATCTGCC
 GCC**CGGATCGCC**

ATGGAGAGAGCAGTGAGAGTGGAGTCCGGGGTCTGGTCGGGGTGGTCTGTCTGCTCCTGGCATGCCCTG
 CCACAGCCACTGGGCCCGAAGTTGCTCAGCCTGAAGTAGACACCACCCTGGGTCGTGCGAGGCCGGCA
 GGTGGGCGTGAAGGGCACAGACCGCCTTGTGAATGCTTTCTGGCATTCCATTTGCCACGCCGCACTG
 GGCCCTGACCGGTTCTCAGCCCCACACCAGCACAGCCCTGGGAGGGTGTGCGGGATGCCAGCACTGCGC
 CCCCATGTGCCTACAAGACGTGGAGAGCATGAACAGCAGCAGATTTGCTCCTCAACGGAAAAACAGCAGAT
 CTTCTCCGTTTCAGAGGACTGCCTGGTCTCAACGTCTATAGCCAGCTGAGGTCCCCGAGGGTCCGGT
 AGGCCGGTCATGGTATGGGTCCATGGAGGCGCTGATAACTGGCGTCCACCTCTACGATGGATCAG
 CTCTGGCTGCCTATGGGGATGTGGTCTGGTTACAGTCCAGTACCGCCTGGGGTCTTGGCTTCTTCAG
 CACTGGAGATGAGCATGCACCTGGCAACCAGGGCTTCTAGATGTGGTAGCTGCTTTCGCGTGGGTGCAA
 GAAAACATCGCCCCCTTCGGGGGTGACCTCAACTGTGCTACTGTCTTTGGTGGATCTGCCGTGGGAGCA
 TCATCTCTGGCCTGGTCTGTCCCCAGTGGCTGCAGGGCTGTTCCACAGAGCCATCACACAGAGTGGGGT
 CATCACCACCCAGGGATCATCGACTCTCACCTTGGCCCTAGCTCAGAAAATCGCAAACCTTGGCC
 TGCAGTCCAGCTCCCCGGCTGAGATGGTGCAGTGCCTTCAGCAGAAAAGAAGGAGAAGAGCTGGTCTTA
 GCAAGAAGCTGAAAAATACTATCTATCTCTCACCGTTGATGGCACTGTCTTCCCCAAAAGCCCCAAGGA
 ACTCCTGAAGGAGAAGCCCTTCCACTCTGTGCCCTTCTCATGGGTGTCAACAACCATGAGTTACAGTGG
 CTCATCCCCAGGGGCTGGGGTCTCCTGGATACAATGGAGCAGATGAGCCGGGAGGACATGCTGGCCATCT
 CAACACCGTCTTGACCAGTCTGGATGTGCCCTGAGATGATGCCACCCTCATAGATGAATACCTAGG
 AAGCAACTCGGACGCACAAGCCAAATGCCAGGCGTTCCAGGAATTCATGGGTGACGTATTCAATCAATGTT
 CCCACCGTCAGTTTTTCAAGATACCTTCGAGATTCTGGAAGCCCTGTCTTTTCTATGAGTTCAGCATC
 GACCCAGTTCTTTTGCGAAGATCAAACCTGCCTGGGTGAAGGCTGATCATGGGGCCGAGGGTGTCTTTGT
 GTTCGGAGGTCCCTTCTCATGGACGAGAGCTCCCGCCTGGAGGCCACAGAGGAGGAGAAGCAGCTAAGC
 CTCACCATGATGGCCAGTGGACCCACTTTGCCCGACAGGGGACCCCAATAGCAAGGCTCTGCCTCCTT
 GGCCCAATTCAACCAGGCGGAACAATATCTGGAGATCAACCCAGTGCACGGGCCGGACAGAAGTTCAG
 GGAGGCTGGATGCAGTTCTGGTACAGACGCTCCCCAGCAAGATACAACAGTGGCACCAGAAGCAGAAG
 AACAGGAAGGCCAGGAGACCTC

ACGCGTACGCGGCCGCTCGAG – GFP Tag – GTTTAA

Protein Sequence:

>RG230853 representing NM_001185177
 Red=Cloning site Green=Tags(s)

MERAVRVESGVLVGVVCLLLACPATATGPEVAQPEVDTTLGRVVRGRQVGVKGTDRDLVNVFLGIPFAQPPL
 GPDRFSAPHPAQPWEGVRDASTAPPMCLQDVESMNSSRFVLNGKQQIFSVSEDCLVLNVYSPAIEVPAGSG
 RPVMVWHGGALITGAATSYDGSALAAAGYDVVVVTVQYRLGVLGFFSTGDEHAPGNQGFLDVVAALRWQ
 ENIAPFGDLNLCVTVFGGSAGSIIISGLVLSVAAGLFHRAITQSGVITTPGIIDSHPWPLAQKIANTLA
 CSSSSPAEMVQCLQQKEGEEELVLSKLLKNTIYPLTVDGTVFVPSPKELLKEKPFHVSVPFLMGVNNHEFSW
 LIPRGWLLDTMEQMSREDMLAISTPVL TSLDVPEMMP TVIDEYLSNSDAQAKQAFQEFMGDVF INV
 PTVSFSRYLRDSSGSPVFFYEFQHRPSSFAKIKPAWVKADHGAEGAFVFGGPF LMDESSRLEATEEEKQLS
 LTMMAQWTHFARTGDPNSKALPPWPQFNQAEQYLEINPVPRAGQK FREAWMQFWSETLPSKIQQWHQKQK
 NRKAQEDL

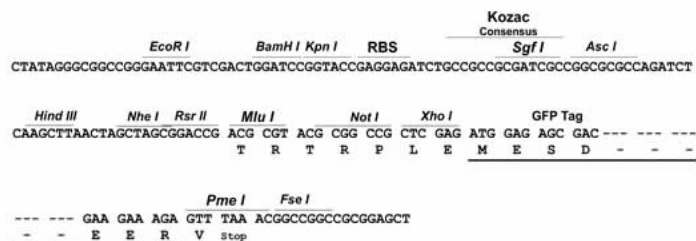
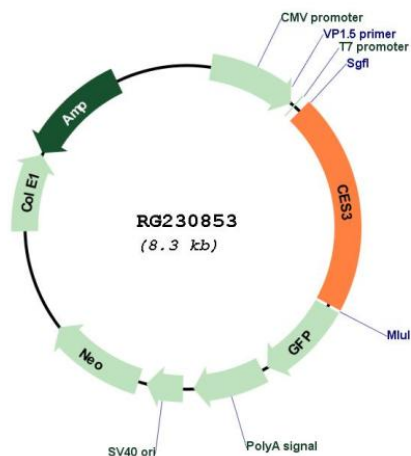
TRTRPLE – GFP Tag – V

Restriction Sites:

Sgfl-MluI

Cloning Scheme:

Cloning sites used for ORF Shutting:


Plasmid Map:


ACCN: NM_001185177
 ORF Size: 1704 bp

OTI Disclaimer:	The molecular sequence of this clone aligns with the gene accession number as a point of reference only. However, individual transcript sequences of the same gene can differ through naturally occurring variations (e.g. polymorphisms), each with its own valid existence. This clone is substantially in agreement with the reference, but a complete review of all prevailing variants is recommended prior to use. More info
OTI Annotation:	This clone was engineered to express the complete ORF with an expression tag. Expression varies depending on the nature of the gene.
Components:	The ORF clone is ion-exchange column purified and shipped in a 2D barcoded Matrix tube containing 10ug of transfection-ready, dried plasmid DNA (reconstitute with 100 ul of water).
Reconstitution Method:	<ol style="list-style-type: none">1. Centrifuge at 5,000xg for 5min.2. Carefully open the tube and add 100ul of sterile water to dissolve the DNA.3. Close the tube and incubate for 10 minutes at room temperature.4. Briefly vortex the tube and then do a quick spin (less than 5000xg) to concentrate the liquid at the bottom.5. Store the suspended plasmid at -20°C. The DNA is stable for at least one year from date of shipping when stored at -20°C.
RefSeq:	NM_001185177.2
RefSeq Size:	3903 bp
RefSeq ORF:	1707 bp
Locus ID:	23491
UniProt ID:	Q6UWW8
Cytogenetics:	16q22.1
Protein Families:	Druggable Genome
Gene Summary:	This gene encodes a member of the carboxylesterase large family. The family members are responsible for the hydrolysis or transesterification of various xenobiotics, such as cocaine and heroin, and endogenous substrates with ester, thioester, or amide bonds. They may participate in fatty acyl and cholesterol ester metabolism, and may play a role in the blood-brain barrier system. This gene is expressed in several tissues, particularly in colon, trachea and in brain, and the protein participates in colon and neural drug metabolism. Multiple alternatively spliced transcript variants encoding distinct isoforms have been reported, but the biological validity and/or full-length nature of some variants have not been determined. [provided by RefSeq, Jun 2010]