

## Product datasheet for **RG230841**

### PI4KB (NM\_001198775) Human Tagged ORF Clone

#### Product data:

Product Type:	Expression Plasmids
Product Name:	PI4KB (NM_001198775) Human Tagged ORF Clone
Tag:	TurboGFP
Symbol:	PI4KB
Synonyms:	NPIK; PI4K-BETA; PI4K92; PI4KBETA; PI4KIII; PI4KIIIBETA; PIK4CB
Mammalian Cell Selection:	Neomycin
Vector:	pCMV6-AC-GFP (PS100010)
E. coli Selection:	Ampicillin (100 ug/mL)



[View online »](#)

**ORF Nucleotide Sequence:**

>RG230841 representing NM\_001198775  
 Red=Cloning site Blue=ORF Green=Tags(s)

TTTTGTAATACGACTCACTATAGGGCGGCCGGGAATTCGTCGACTGGATCCGGTACCGAGGAGATCTGCC  
 GCC**GCGATCGCC**

ATGGGAGATACAGTAGTGGAGCCTGCCCCCTTGAAGCCAACCTTCTGAGCCCACTTCTGGCCACCAGGGA  
 ATAATGGGGGTCCTTGCTAAGTGTATCACGGAGGGGTCGGGGAACATCAGTGATTGACCCCTGAGGT  
 GGCCAGAAAGCCTGCCAGGAGGTGTTGGAGAAAGTCAAGCTTTTGCATGGAGGCGTGGCAGTCTCTAGC  
 AGAGGCACCCCACTGGAGTTGGTCAATGGGGATGGTGTGGACAGTGAATCCGTTGCCTAGATGATCCAC  
 CTGCCAGATCAGGGAGGAGGAAGATGAGATGGGGCCGCTGTGGCCTCAGGCACAGCCAAAGGAGCAAG  
 AAGACGGCGCAGAACAACTCAGCTAACAGTCTTGGCTGCTGAGGCTGTTTGAATCAAACTGTTTGC  
 ATCTCCATGGCCATTTACATCTGTATACTCAAGGAGCCTGGAGTACAAGCCTACATTGGCAACCGGC  
 TCTTCTGCTTTCGCAACGAGGACGTGGACTTCTATCTGCCCCAGTTGCTTAACATGTACATCCACATGGA  
 TGAGGACGTGGGTGATGCCATTAAGCCCTACATAGTCCACCGTTGCCGCCAGAGCATTAACTTTCCCTC  
 CAGTGTGCCCTGTTGCTTGGGGCCTATTCTCAGACATGCACATTTCCACTCAACGACACTCCCGTGGGA  
 CCAAGCTACGGAAGCTGATCCTCTCAGATGAGCTAAAGCCAGCTCACAGGAAGAGGGAGCTGCCCTCCTT  
 GAGCCCGGCCCTGATACAGGGCTGTCTCCCTCCAAAAGGACTCACACAGCCTCTAAGTCAGATGCCACT  
 GCCAGCATAAGTCTCAGCAGCAACCTGAAACGAACAGCCAGCAACCCCTAAAGTGGAGAATGAGGATGAGC  
 CTGTTTCGACTGGCTCCTGAGAGAGAATTCATCAAGTCCCTGATGGCGATCGGCAAGCGGCTGGCCACGCT  
 CCCACCAAGAGCAGAAAACACAGAGGCTGATCTCAGAGCTCTCCCTGCTCAACCATAAGCTCCCTGCC  
 CGAGTGGCTGCCACTGTGGCTTTGACCACACGTTGGTCCGTGTACCCACACACAGGCTTTGTGTC  
 TCAACTCAAGGACAAGGCTCCCTACCTGATTTATGTGGAAGTCCCTTGAATGTGAAAACCTTTGACACCAC  
 CAGTGTCCCTGCCCGGATCCCGGAGAACCGAATTCGGAGTACGAGGTCCGTAGAAAACCTTGCCCGAATGT  
 GGTATTACCCATGAGCAGCGAGCTGGCAGCTTACGACTGTGCCAACTATGACAACGATGATGAGGCT  
 GGTCCGGTGGATGACATAGGCGAGCTGCAAGTGGAGCTCCCGAAGTGCATACCAACAGCTGTGACAACAT  
 CTCCCAGTTCTCTGTGGACAGCATCACAGCCAGGAGAGCAAGGAGCCTGTGTTCAATGCAGCAGGGGAC  
 ATCCGCCGGCCCTTTCCGAACAGCTGGCTCATACCCCGACAGCCTTCAAACGAGACCCAGAAGATCCTT  
 CTGCAGTTGCTCTCAAAGAGCCCTGGCAGGAGAAAGTACGGCGGATCAGAGAGGGCTCCCCCTACGGCCA  
 TCTCCCAATTGGCGGCTCCTGTGAGTCAATTTGGGAACAGGAGCGAGTGGCCCTTTGGATCAAGCCATACA  
 AGATTCCTGTGATTTCCGCTGATAGTGGCATGATTGAACCAAGTGGTCAATGCTGTGTCCATCCATCAGGT  
 GAAGAAACAGTCACAGCTCTCCTTGCTCGATTCTTCTACAGGAGCACGGCAGTTACACCACTGAGGCA  
 TTCTCAGTGCACAGCGCAATTTGTGCAAAGTTGTGCTGGTACTGCTTGGTCTGCTACCTGCTGCAAG  
 TCAAGGACAGACACAATGGGAATATCCTTTTGGACGCAGAAAGCCACATCATCCACATCGACTTTGGCTT  
 CATCCTCTCCAGCTCACCCGAAATCTGGGCTTTGAGACGTCAGCCTTTAAGCTGACCACAGAGTTTGTG  
 GATGTGATGGGCGGCTGGATGGCGACATGTTCAACTACTATAAGATGCTGATGCTGCAAGGCTGATTG  
 CCGCTCGGAAACACATGGACAAGGTGGTGCAGATCGTGGAGATCATGCAGCAAGGTTCTCAGCTTCTTGT  
 CTTCCATGGCTCCAGCACCATTGAAACCTCAAAGAGAGGTTCCACATGAGCATGACTGAGGAGCAGCTG  
 CAGCTGCTGGTGGAGCAGATGGTGGATGGCAGTATGCGGTCTATCACCAACAACTCTATGACGGCTTCC  
 AGTACCTACCAACGGCATCATG

**ACGCGT**ACGCGGCCGCTCGAG – GFP Tag – GTTTAA

**Protein Sequence:** >RG230841 representing NM\_001198775  
Red=Cloning site Green=Tags(s)

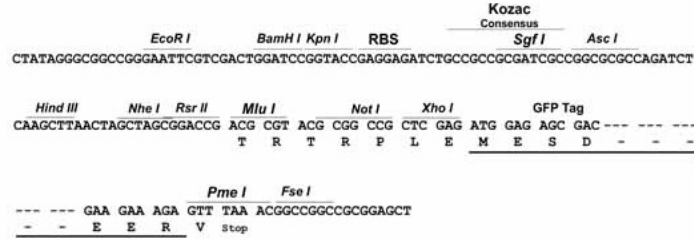
MGDTVVEPAPLKPTSEPTSGPPGNNGSLLSVITEGVGELSVIDPEVAQKACQEVLEKVKLLHGGVAVSS  
RGTPLELVNGDGDSEIRCLDDPPAQIREEEDEMGAAVASGTAKGARRRRQNSAKQSWLLRLFESKLF  
ISMAISYLYNSKEPGVQAYIGNRLF CFRNEDVDFYLPQLLNMYIHMDDEDVGDAIKPYIVHRCRQSINFS  
QCALLLGAYSSDMHISTQRHSRGTCLRKLILSDELKPAHRKRELPSPAPDTGLSPSKRTHQRKSDAT  
ASISLSSNLKRTASNPKVENEDEPVRLAPEREFIKSLMAIGKRLATLPTKEQKTQRLISELSLLNHKLP  
RVWLPTAGFDHHVVRVPHQAVVLNSKDKAPYLIYVEVLECFDFTTSVPIRIPENRIRSTRSVENLPEC  
GITHEQRAGSFSTVPNYDNDDEAWSVDDIGELQVELPEVHTNSCDNISQFSVDSITSQESKEPVFIAAGD  
IRRRLEQLAHTPTAFKRDPEDPSAVALKEPWQEKVRRIREGSPYGHLPNWRLLSVIVKCGDDLQELLA  
FQVLKQLQSIWEQERVPLWIKPYKILVISADSGMIEPVVNAVSIHQVKKQSQLSLLDYFLQEHGYSYTT  
EAFLSAQRNFVQSCAGYCLVCYLLQVDRHNGNILLDAEGHIIHIDFGFILLSPPRNLGFETSAFKLTTEFV  
DVMGGLDGMFNYYKMLMLQGLIAARKHMDKVVQIVEIMQQGSQLPCFHGSSTIRNLKERFHMSMTEEQL  
QLLVEQMVDGSMRSITTKLYDGFQYLTNGIM

TRTRPLE - GFP Tag - V

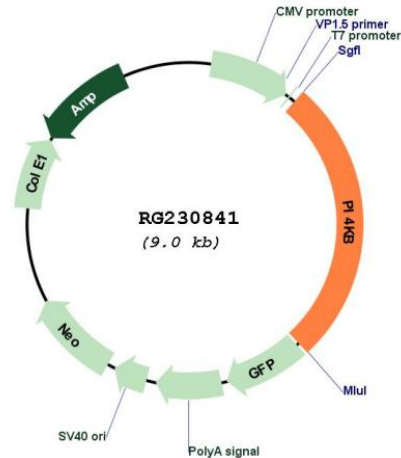
**Restriction Sites:** Sgfl-MluI

Cloning Scheme:

Cloning sites used for ORF Shutting:



## Plasmid Map:



ACCN: NM\_001198775

ORF Size: 2406 bp

OTI Disclaimer: The molecular sequence of this clone aligns with the gene accession number as a point of reference only. However, individual transcript sequences of the same gene can differ through naturally occurring variations (e.g. polymorphisms), each with its own valid existence. This clone is substantially in agreement with the reference, but a complete review of all prevailing variants is recommended prior to use. [More info](#)

OTI Annotation: This clone was engineered to express the complete ORF with an expression tag. Expression varies depending on the nature of the gene.

Components: The ORF clone is ion-exchange column purified and shipped in a 2D barcoded Matrix tube containing 10ug of transfection-ready, dried plasmid DNA (reconstitute with 100 ul of water).

Reconstitution Method:

1. Centrifuge at 5,000xg for 5min.
2. Carefully open the tube and add 100ul of sterile water to dissolve the DNA.
3. Close the tube and incubate for 10 minutes at room temperature.
4. Briefly vortex the tube and then do a quick spin (less than 5000xg) to concentrate the liquid at the bottom.
5. Store the suspended plasmid at -20°C. The DNA is stable for at least one year from date of shipping when stored at -20°C.

RefSeq: [NM\\_001198775.1](#), [NP\\_001185704.1](#)

RefSeq Size: 2939 bp

RefSeq ORF: 1455 bp

Locus ID: 5298

UniProt ID: [Q9UBF8](#)

Cytogenetics: 1q21.3

<b>Protein Families:</b>	Druggable Genome
<b>Protein Pathways:</b>	Inositol phosphate metabolism, Metabolic pathways, Phosphatidylinositol signaling system
<b>Gene Summary:</b>	Phosphorylates phosphatidylinositol (PI) in the first committed step in the production of the second messenger inositol-1,4,5,-trisphosphate (PIP). May regulate Golgi disintegration/reorganization during mitosis, possibly via its phosphorylation. Involved in Golgi-to-plasma membrane trafficking (By similarity).[UniProtKB/Swiss-Prot Function]