

Product datasheet for **RG230808**

TMEM116 (NM_001193531) Human Tagged ORF Clone

Product data:

Product Type: Expression Plasmids
Product Name: TMEM116 (NM_001193531) Human Tagged ORF Clone
Tag: TurboGFP
Symbol: TMEM116
Mammalian Cell Selection: Neomycin
Vector: pCMV6-AC-GFP (PS100010)
E. coli Selection: Ampicillin (100 ug/mL)
ORF Nucleotide Sequence: >RG230808 representing NM_001193531
Red=Cloning site Blue=ORF Green=Tags(s)

TTTTGTAATACGACTCACTATAGGGCGGCCGGAATTCGTCGACTGGATCCGGTACCGAGGAGATCTGCC
GCC**CGATCGCC**

ATGAAACACACCCAGAGTGGACAGAGCACATCTCCACTGGTGATAGATTAACTTGTGCGAGTTTGTCAA
TGGCCTTTGTTTTCTCAAGCCTGATACCTCTGCTATTGATGACACCTGTATTCTGTCTGGGAAATACTAG
TGAATGTTTCCAAAACCTCAGTCAGAGCCACAAGTGATCTTGATGCACTACCACCATCAGCCATGGT
GAACCTCCACCTTCTGCCAACACATCTGTCTGTAGCACACTTTATTTTTATGGTATCGCCATTTTCTGG
GCAGCTTTGTACTCAGCCTCCTTACCATTATGGTCTTACTTATCCGAGCCAGACATTGTATAAGAAGTT
TGTGAAGTCAACTGGCTTCTGGGGAGTGAACAGTGGGCAGTGATTACATTGTGGACCAACGGGTGCGC
TTCTACCCGGTGGCCTTCTTTGCTGCTGGGGCCAGCTGTCATTCTAATGATCATAAAGCTGACTAAGC
CACAGGACACCAAGCTTCACATGGCCCTTATGTTCTCCAGGCTTAACGGCAACATCTCAGGGTCTACT
CAACTGTGGAGTATATGGCTGGACGCAGCACAAATCCACCAACTAAAGCAGGAGGCTCGGCGTGATGCA
GATACCCAGACACCATTATGCTCACAGAAGAGATTCTATAGCAGGGGCTTAAATTCCTGGAATCCA
CCCTGACTTTTCTGCCAGTACTTCTACCATTTT

ACGCGTACGCGGCCGCTCGAG - GFP Tag - GTTTAA

Protein Sequence: >RG230808 representing NM_001193531
Red=Cloning site Green=Tags(s)

MKHTQSGQSTSPLVIDYTCRVCQMAFVFSLLIPLLLMTPVFCLGNTSECFQNFSSQSHKCILMHSPPSAMA
ELPPSANTSVCSSTLYFYGIAIFLGSFVLSLLTIMVLLIRAQTLYKKFVKSTGFLGSEQWAVIHIIVDQVRV
FYPVAFFCCWGPVILMIKLTQPQDTKLHMALYVLQAL TATSQGLLNCGVYVGTQHKFHQLKQEARRDA
DTQTPLLCSQKRFYSRGLNSLESTLTFPASTSTIF

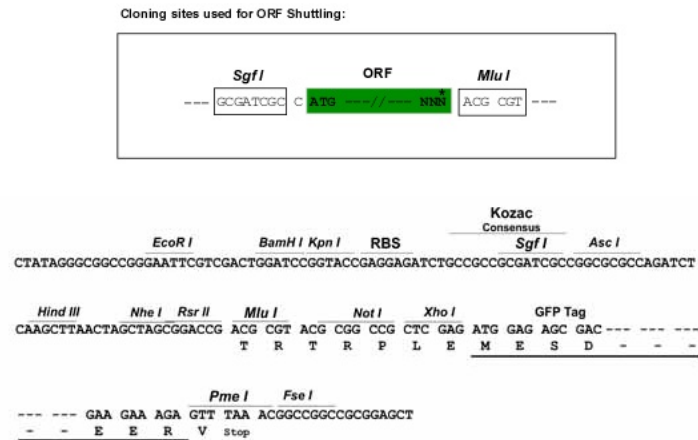
TRTRPLE - GFP Tag - V



[View online »](#)

Restriction Sites: SgfI-MluI

Cloning Scheme:



ACCN: NM_001193531

ORF Size: 735 bp

OTI Disclaimer: The molecular sequence of this clone aligns with the gene accession number as a point of reference only. However, individual transcript sequences of the same gene can differ through naturally occurring variations (e.g. polymorphisms), each with its own valid existence. This clone is substantially in agreement with the reference, but a complete review of all prevailing variants is recommended prior to use. [More info](#)

OTI Annotation: This clone was engineered to express the complete ORF with an expression tag. Expression varies depending on the nature of the gene.

Components: The ORF clone is ion-exchange column purified and shipped in a 2D barcoded Matrix tube containing 10ug of transfection-ready, dried plasmid DNA (reconstitute with 100 ul of water).

Reconstitution Method:

1. Centrifuge at 5,000xg for 5min.
2. Carefully open the tube and add 100ul of sterile water to dissolve the DNA.
3. Close the tube and incubate for 10 minutes at room temperature.
4. Briefly vortex the tube and then do a quick spin (less than 5000xg) to concentrate the liquid at the bottom.
5. Store the suspended plasmid at -20°C. The DNA is stable for at least one year from date of shipping when stored at -20°C.

RefSeq: [NM_001193531.1](#), [NP_001180460.1](#)

RefSeq Size: 1607 bp

RefSeq ORF: 1014 bp

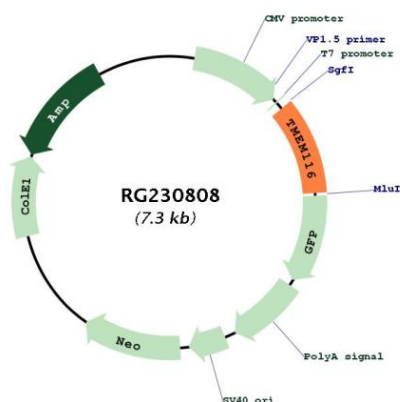
Locus ID: 89894

UniProt ID: [Q8NCL8](#)

Cytogenetics: 12q24.12-q24.13

Protein Families: Druggable Genome, Transmembrane

Product images:



Circular map for RG230808