

Product datasheet for **RG230807**

BTN2A2 (NM_001197238) Human Tagged ORF Clone

Product data:

Product Type:	Expression Plasmids
Product Name:	BTN2A2 (NM_001197238) Human Tagged ORF Clone
Tag:	TurboGFP
Symbol:	BTN2A2
Synonyms:	BT2.2; BTF2; BTN2.2
Mammalian Cell Selection:	Neomycin
Vector:	pCMV6-AC-GFP (PS100010)
E. coli Selection:	Ampicillin (100 ug/mL)
ORF Nucleotide Sequence:	>RG230807 representing NM_001197238 Red=Cloning site Blue=ORF Green=Tags(s)

TTTTGTAATACGACTCACTATAGGGCGGCCGGAATTCGTCGACTGGATCCGGTACCGAGGAGATCTGCC
GCC**CGATCGCC**

ATGGAACCAGCTGCTGCTCTGCACTTCTCCCTGCCAGCCTCCCTCCTCCTCCTGCTCCTCCTCCTTC
TCAGCCTGTGTGCACTGGTCTCAGCCAGTTTACTGTCGTGGGGCCAGCTAATCCCATCCTGGCCATGGT
GGGAGAAAACACTACATTACGCTGCCATCTGTCACCCGAGAAAAATGCTGAGGACATGGAGGTGCGGTGG
TTCCGGTCTCAGTTCTCCCCGAGTGTGGTATAAGGGTGGGAGAGAGAGAACAGAGGAGCAGATGG
AGGAGTACCGGGAAGAATCACCTTTGTGAGCAAAGACATCAACAGGGGCAGCGTGGCCCTGGTCATACA
TAACGTCACAGCCAGGAGAATGGGATCTACCGCTGTTACTTCCAAGAAGGCAGGTCTACGATGAGGCC
ATCCTACGCTCGTGGTGGCAGGCCTTGGGTCTAAGCCCTCATTGAAATCAAGGCCAAGAGGATGGGA
GCATCTGGCTGGAGTGCATATCTGGAGGGTGGTACCCAGAGCCCCTCACAGTGTGGAGGGACCCCTACGG
TGAGGTTGTGCCCGCCCTGAAGGAGGTTCCATCGCTGATGCTGACGGCCTCTTCATGGTACCACAGCT
GTGATCATCAGAGACAAGTATGTGAGGAATGTGTCCTGCTCTGTCAACAACCCCTGCTCGGCCAGGAGA
AGGAACTGTCATTTTTATTCCAGAATCCTTTATGCCAGCGCATCTCCCTGGATGGTGGCCCTAGCTGT
CATCCTGACCGCATCTCCCTGGATGGTGTCCATGACTGTATCCTGGCTGTTTTCATCATCTTCATGGCT
GTCAGCATCTGTTGCATCAAGAACTTCAAAGGGAAAAAAGATTCTGTCAGGGGAAAAGAAAGTTGAAC
AAGAGGAAAAAGAAATTGCACAGCAACTTCAAGAAGAATTGCGATGGAGAAGAACATTCTTACATGCTGA
TGCAACCTGACTGGATTAAGGAATACC

ACGCGTACGCGGCCGCTCGAG - GFP Tag - GTTTAA



[View online »](#)

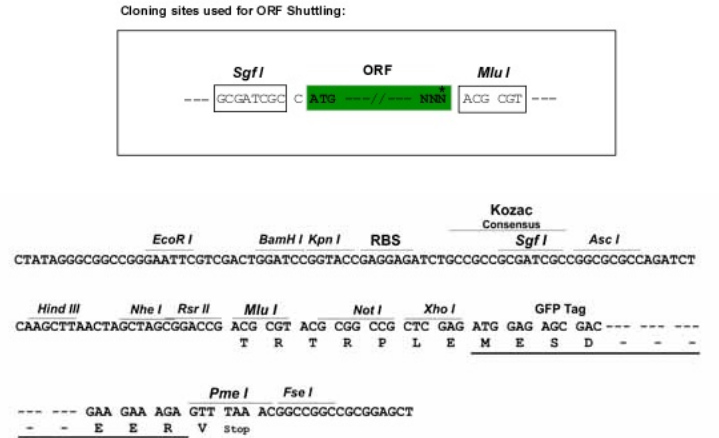
Protein Sequence: >RG230807 representing NM_001197238
 Red=Cloning site Green=Tags(s)

MEPAAALHFSLPASLLLLLLLLLLSLCALVSAQFTVVGPANPILAMVGENTTLRCHLSPEKNAEDMEVRW
 FRSQFSPA VFVYKGGRRERTEEQMEEYRGRITFVSKDINRGSVALVIHNVTAQENGIYRCYFQEGRSYDEA
 ILRLVVAGLGSKPLIEIKAQEDGSIWLECSGGWYPEPLTVWRDPYGEVVPALKEVSIADADGLFMVTTA
 VIIRDKYVRNVSCSVNNTLLGQEKETVIFIPESFMPSPMVALAVILTASPWMVSMTVILAVFIIIFMA
 VSICCIKKLQREKKILSGEKKVEQEEKEIAQQLQEELRWRRTFLHADVNLTGLRNT

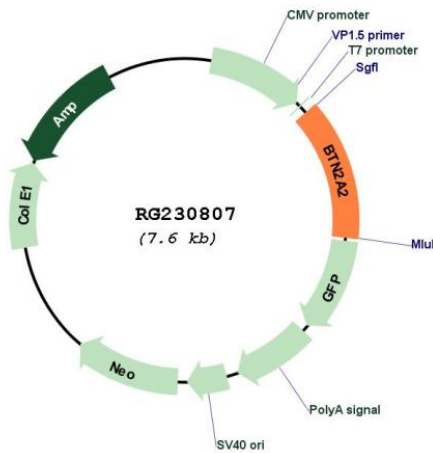
TRTRPLE - GFP Tag - V

Restriction Sites: SgfI-MluI

Cloning Scheme:



Plasmid Map:



ACCN: NM_001197238

ORF Size: 1008 bp

OTI Disclaimer:	The molecular sequence of this clone aligns with the gene accession number as a point of reference only. However, individual transcript sequences of the same gene can differ through naturally occurring variations (e.g. polymorphisms), each with its own valid existence. This clone is substantially in agreement with the reference, but a complete review of all prevailing variants is recommended prior to use. More info
OTI Annotation:	This clone was engineered to express the complete ORF with an expression tag. Expression varies depending on the nature of the gene.
Components:	The ORF clone is ion-exchange column purified and shipped in a 2D barcoded Matrix tube containing 10ug of transfection-ready, dried plasmid DNA (reconstitute with 100 ul of water).
Reconstitution Method:	<ol style="list-style-type: none">1. Centrifuge at 5,000xg for 5min.2. Carefully open the tube and add 100ul of sterile water to dissolve the DNA.3. Close the tube and incubate for 10 minutes at room temperature.4. Briefly vortex the tube and then do a quick spin (less than 5000xg) to concentrate the liquid at the bottom.5. Store the suspended plasmid at -20°C. The DNA is stable for at least one year from date of shipping when stored at -20°C.
RefSeq:	NM_001197238.2
RefSeq Size:	1820 bp
RefSeq ORF:	1011 bp
Locus ID:	10385
UniProt ID:	Q8WVV5
Cytogenetics:	6p22.2
Protein Families:	Druggable Genome, Transmembrane
Gene Summary:	Butyrophilin is the major protein associated with fat droplets in the milk. This gene is a member of the BTN2 subfamily of genes, which encode proteins belonging to the butyrophilin protein family. The gene is located in a cluster on chromosome 6, consisting of seven genes belonging to the expanding B7/butyrophilin-like group, a subset of the immunoglobulin gene superfamily. The encoded protein is a type I receptor glycoprotein involved in lipid, fatty-acid and sterol metabolism. Several alternatively spliced transcript variants encoding different isoforms have been found for this gene. [provided by RefSeq, Oct 2010]