

## Product datasheet for **RG230753**

### CHD8 (NM\_001170629) Human Tagged ORF Clone

#### Product data:

**Product Type:** Expression Plasmids  
**Product Name:** CHD8 (NM\_001170629) Human Tagged ORF Clone  
**Tag:** TurboGFP  
**Symbol:** CHD8  
**Synonyms:** AUTS18; HELSNF1  
**Mammalian Cell Selection:** Neomycin  
**Vector:** pCMV6-AC-GFP (PS100010)  
**E. coli Selection:** Ampicillin (100 ug/mL)  
**ORF Nucleotide Sequence:** >RG230753 representing NM\_001170629  
 Red=Cloning site Blue=ORF Green=Tags(s)

TTTTGTAATACGACTCACTATAGGGCGGCCGGAATTCGTCGACTGGATCCGGTACCGAGGAGATCTGCC  
 GCC**CGATCGCC**

ATGGCAGACCCCATCATGGATCTGTTTCGATGACCCAAATTTATTTGGCCTGGACTCTCTGACTGATGACA  
 GCTTTAACAGGTCACACAAGACCCATTGAGGAAGCCCTTGGACTGCCAAGCTCTCTGGACTCCTTGG  
 TCAGATGAACCAGGATGGTGGAGGTGGTATGTGGGAATTCATCAGCAAGTGAAGTGGTCCCTCCACCA  
 GAGGAAACAGCTCCACAGAATTTCAAAGAATCCACAGCTCCAGCTCCAGAATCCATAACCTTGCATG  
 ATTATACCACTCAGCCTGCCAGCCAGGAGCAGCCAGCCAACTGTCTTACAGACATCGAGCCAAACATC  
 AGGACTTTTGCAAGTCTCCAAGAGCCAGGAGATCCTGAGCCAAGGAATCCTTTCATGGGTGTCTCTGCC  
 ACAGCTGTCTCCTCCAGTAGTGCTGGAGGGCAGCCACCTCAGTCAGCCCTAAGATTGTTATCCTTAAGG  
 CCCCAACAGCTCCTCAGTCACTGGTGCCCATGTGGCACAATTCAGGCCAAGGTATCACCAGCACAGC  
 TCAGCCCTGGTGGCAGGCACAGCCAATGGTGGAAAAGTCACTTTTACCAAAGTGCTAACCGGCACACCC  
 CTTGACAGGTTTCCATTGTCTCTGGTAATACAGTGTGGCCGCAAGGTCCCTGGGAACAGGCTG  
 CTGTTACAGCATTGTCCAGCCAGCCGACCAGTAAAGCAGCTGGTCTCCAGCCAGTTAAGGGTTCAGC  
 TCCTGCTGGAACCCCTGGGGCCACAGGGCCCCACTGAAGCCTGCAGTTACACTGACCTCTACACCTACC  
 CAGGGTGAATCGAAACGCATCACCTGGTCTCCAGCAGCCAGTCTGGAGGTCCTCCAGGACATCGGC  
 ATGTTGTGCTAGGGAGTCTACCAGGCAAGATAGTGTACAGGGCAACCAGCTGGCAGCCCTGACTCAAGC  
 CAAGAATGCCAAGGGCAGCCTGCCAAGGTAGTAACTATCCAGCTGCAGGTGCAGCAGCCACAGCAAAAA  
 ATCCAGATTGTACCACAACCACCATCATCGCAGCCACAGCCAGCAGCCACCCTCCACCAGCCAGTGA  
 CTCTGTCTCTGTACAGCAGGCTCAGATAATGGGACCAGGACAAAGCCAGGACAAAGACTTTTCAGTACC  
 AGTCAAGTGGTACTGCAGCCACAGGCTGGCTCTTCCAAAGGGCCTCTTCTGGGCTCTCTGTAGTTAA  
 GTTCTGAGTGCCAGTGAAGTGGCAGCTTGTTCATCACCAGCAAGCTCTGCTCCTCATTGGGGGAAAGA  
 CAGGAATGGAGGAAAACCGCAGATTGGAACACCAGAAGAAGCAAGAGAAAGCAAAATCGGATTGTAGCAGA  
 GGCCATTGCGAGAGCCCTGCCCGGTGAGCAGAACATACCTCGAGTCTTAAATGAGGACGAGTTGCC



[View online >](#)

AGCGTTTCGGCCAGAGGAGGAAGGCGAGAAGAAACGCAGGAAGAAGAGTGCTGGGGAGAGGCTGAAAGAGG  
 AGAAGCCAAAGAAGAGTAAAACATCTGGTGCCTCCAAAACAAAGGGCAAGAGCAAGCTCAACACCATCAC  
 TCCTGTAGTGGGTAAAGAAGAAAAACGTAATACCTCATCTGATAATTAGATGTGGAAAGTCATGCCTGCA  
 CAGTCACCTCGAGAAGATGAAGAAAGCAGCATTGAGAAGAGACGCTCAAACCGCCAAGTTAAGCGAAAA  
 AATATACAGAGGACCTGGATATAAGATCACAGATGATGAAGAAGAAGAAGAGGTGGATGTAAGTGGTCC  
 AATAAAACCTGAGCCTATCCTCCCTGAACCAGTGAAGAACCAGATGGCGAGACTTTGCCTCCATGCGAG  
 TTCTTTGTGGAGAATCCAGTGAAGAAGATGCAGCCATTGTAGACAAAGTGCTTTCTATGCGGATTGTGA  
 AGAAGGAGCTCCCTTCTGGACAATATACTGAAGCAGAAGAATTCTTTGTCAAGTACAAGAACTACTCCTA  
 TCTGCATTGTGAATGGGCTACTATCTCCAACTAGAGAAGGATAAGAGGATACATCAAAAAATTAAGCGC  
 TTCAAAACCAAAATGGCTCAGATGAGACTTCTTCCATGAGGATGAAGAGCCCTTAATCCAGACTACG  
 TAGAGGTGGATAGGATATTGGATGAGTCTCACAGTATTGACAAGGACAATGGGGAGCCCGTTATTTACTA  
 CCTGGTGAATGGTGTCTCTGCCCTATGAGGATAGCACATGGGAGCTAAAAGAAGATGTTGATGAGGGC  
 AAGATTCGAGAATTAACCGATTCAAGTCAAGGCACCCAGAACTCAAAGGGTGAATCGTCCGAGGCAA  
 GTGCCTGGAAGAAATGGAGCTATCACATGAATATAAAAAAGAAACCAGCTACGGGAATATCAGTTGGA  
 AGGGGTTAATTGGCTGCTTTAATTGGTATAACAGGCAGAAGTGCATCCTGGCTGATGAGATGGGATTG  
 GGCAAACTATTAGTCCATTGCCTTCTGCAGGAAGTATATAATGTGGGCATCCATGGTCCCTTCTGG  
 TCATTGCCCACTGTCCCAATTAATACTGGGAGCGAGAATTAATACATGGACAGAAATGAACACTAT  
 TGTGTACCATGGCAGTCTGGCCAGCAGGAGATGATTCACAGTATGAAATGACTGCAAAGATTACCGG  
 GGACGCCCTATCCAGGCGCATACAAGTTTGACGCTCTGATCACCCTTTTGAGATGATTTTGTGAGATT  
 GTCCTGAGCTTCGTGAAATGAATGGCGTTGTGTTATCATTGATGAAGCCATCGACTGAAAAACCGTAA  
 TTGCAAGCTGTTGATAGTCTCAAGCACATGGACCTGGAACACAAGGTGCTACTCACAGGAACACCATTG  
 CAAAATACTGTAGAAGAACTGTTAGCTTGCTTCAATTTCTTGAACCGTCACAATTTCCCTCAGAATG  
 AGTTTCTCAAGGACTTTGGGGATCTCAAGACAGAGGAACAGGTTCAAAGCTACAGGCCATTCTTAAGCC  
 AATGATGCTGAGAAGACTCAAAGAGGATGTTGAAAAAACTTGGCACCCAAACAGGAAACAATATTGAA  
 GTAGAGCTGACTAATATCCAGAAGAAATACTATCGGGCTATTTTGGAGAAGAATTTCTCCTTCTTTCCA  
 AAGGGGCAGGTCAACCAACATGCCTAATCTACTTAACACAATGATGGAGTTGCGCAAGTGTGCAACCA  
 CCCATATCTCATCAATGGTGTGAAGAAAAATCCTAACAGAATCCGTGAAGCTTGCCATATTACCT  
 CATGACTTTCACCTGCAGGCCATGGTTCGTTAGCCGGCAAACTGGTCTTATTGACAAGTTGCTTCCAA  
 AGCTTAAAGCTGGTGGCCATAAAGTTCTGATCTTCTCAGATGGTGGCTGCCTAGACATCCTAGAGGA  
 TTATTTAATCCAGAGGAGTACTTATATGAACGATTGATGGGCGAGTTAGAGGCAACCTTCGACAGGCT  
 GCCATTGACCGCTTCAGCAAGCCTGACTCAGACCGCTTTGTCTTCTACTGTGTACCCGGCTGGTGGAC  
 TTGGTATTAATCTTACAGCTGCTGATACCTGCATCATCTTTGATTGACTGGAATCCACAAAATGACCT  
 GCAGGCCACGGCAGATGTCATCGAATTGGGCAGAGCAAAGCTGTGAAGGTGTACCCGCTCATCACTCGT  
 AATTCTACGAGAGAGAGATGTTTGATAAGGCCAGCCTCAAGTTGGGGTTGGATAAGGCTGTGCTCAAT  
 CCATGAGTGGTCGGGATGGCAACATTACTGGAATCCAACAGTTCTCTAAGAAGGAGATTGAAGATCTTTT  
 AAGAAAAGGAGCATATGCAGCCATCATGGAGGAAGATGATGAAGGCTCCAAGTTTGTGAAGAGGACATT  
 GACCAGATCTTGTAAAGCAAGTACAACCATCACCATTGAATCTGAAGGAAAAGGTTCCACCTTTGCTA  
 AGGCAAGCTTTGTTGCTTCTGAAAACAGGACAGATATTTCTTTGGATGACCCCACTTTTGGCAAAAGTG  
 GGCCAAAAGGCTGACCTAGACATGGATCTGCTCAACAGCAAGAATAATTTGGTAATTGACACACCTAGA  
 GTACGAAAAACAAACGCGCCACTTTAGCACTCTGAAAGATGATGACCTGGTGAATTTCTGATTTGGAAA  
 GTGAGGATGATGAGCGGCCACGCTCCCGCAGACATGACCGTCATCATGCCTATGGGCGACTGACTGCTT  
 TCGGGTGGAAAAGCATCTCCTGATATAGGTTGGGGACGATGGCGAGATATTTTATCTCATGGACGCTTC  
 AAGCGACGTATGACTGAACGAGATGTGGAGACATTTGTGCGGCCATTCTCGTGTACTGTCTTACTACT  
 ACCGTGGGGATGAAAATATTAAGGCTTCTATCTGGGACTTGATTAGCCAGCTGAAAATGGCAAGACAAA  
 AGAATTGCAGAATCATTAGGTCTATCTATCCCTGTGCCTCGTGGACGCAAAAGGAAAAAAGTAAAGTCA  
 CAAAGCACTTTTGATATCCATAAGGCAGATTGGATCCGGAATAAACCCTGACACTTTGTTCCAAGATG  
 AAAGTTATAAGAAGCACTTGAAACATCAGTGTAAACAAGTACTGTTGCGGGTACGAATGCTATACTACCT  
 GAGGCAGGAGGTTATTGGAGACCAAGCAGAAAAGGTGTTAGGGGGTGGCATTGCCAGTGAGATTGACATA  
 TGGTTCACAGTAGTGGATCAACTGGAGGTTCCAACAACCTGGTGGGACAGTGAGGCTGACAAGTCGCTGC  
 TCATTGGAGTCTTTAAACATGGCTATGAGAAAATAAATACCATGAGGGCAGACCCAGCCTTATGTTTCT  
 AGAAAAGGCTGGCCGACCAGATGACAAAGCAATTGCAGCAGAACATCGAGTGTGGATAACTTCTCTGAC  
 ATAGTAGAAGGGGTTGACTTTGATAAAGATTGTGAAGATCCTGAATATAAACCACTCCAAGGTCCCCCAA

AGGACCAAGATGATGAGGGTGATCCCTTGATGATGATGGATGAGGAGATCTCAGTGATTGATGGAGATGA  
AGCCCAGGTGACCCAACAGCCAGGCCATTTATTCTGGCCTCCGGGCTCTGCCCTAACAGCTAGGCTTCGG  
CGTCTAGTAACAGCGTATCAGCGCAGCTACAAGAGAGAACAAATGAAGATAGAGGCTGCAGAACGTGGG  
ACCGGCGAAGGCGGCGTTGTGAAGCAGCCTTCAAGCTGAAAGAAATTGCACGGCGGGAGAAAACAACG  
ATGGACAAGGCGTGAACAACTGATTTTTATCGAGTGGTGTCTACGTTTGGTGTGGAATATGACCCTGAC  
ACCATGCAGTCCATTGGGATCGCTTCCGCACTTTTCTCGACTAGACAAAAAGACAGATGAAAGCCTTA  
CCAAGTACTTCCATGGCTTTGTGGCCATGTGCCCAAGTATGCCGCTTCCCCAGCAGCTGGAGATGA  
ACCCCCGACCTAACCTGTTTATTGAGCCATCACTGAGGAGAGAGCCTCACGGACTCTCTACCGTATA  
GAATTGCTTCGGCGCTTACGGGAACAAGTTTTATGCCACCCCTTTTGAAGATCGGCTGGCATTGTGTC  
AGCCTCTGGTCTGAATTGCCAAATGGTGGGAGCCTGTTGGCATGATGGGGAGCTTCTAAGAGGGGC  
AGCCCGCATGGGGTGGCCAAACAGACTGCAACATCATGCAGGACCCAGACTTCTTTTCTGGCTGCC  
CGTATGAATTATGCAGAACCATCAAGCAGGAGCACCAGCTCCATCCTTGTACGCTGCTCTACTCCAC  
TGCTGCACCAGCAGTATACCTCACGCACTGCCTCACCCTGCCCTCGCCAGATGCTCCTGTTGAAA  
GTCACCCGAGGAGACAGTACCCAGTCCCGACTGGAGAGTCTGACTTTAAAGCTAGAGCAGCAGGTTG  
GTGCCAGGAGCCGACCAACCCACAAGACTATGAGATGCGAGTATCCCCCTCTGATACTACCCCTCTGG  
TTTCCCGAGTGTCCACCAGTCAAAGTGGAGGATGAGGATGATTCGGACTCTGAGCTGGACTTGAGCAA  
GCTGTCACCATCTTCTTCTTCTCCTCATCCTCATCCAGCTCCAGCTCCAGCACTGATGAGAGTGAGGAT  
GAGAAGGAAGAGAAGCTAACTGACCAGTCCCGCTCAAAGCTCTATGATGAAGAGAGTCTCCTGTCCCTCA  
CTATGTCCCAAGATGGATTCCCAATGAAGATGGAGAACAATGACCCCTGAGCTTCTGCTACTGCAGGA  
AAGACAAGAGCCTCTGAGTGGCCCAAGGATCGTGTCTGATAAACCGTATTGACCTCGTCTGCCAGGCT  
GTACTCTCAGGGAAGTGGCTTCTAGCCGTAGGAGCCAGGAAATGGTAAACAGGAGGAATTTGGGGCCAG  
GCAACCACTTGTAGACAGTCCCTCATTGACTCCTGGAGAATATGGTACTCTCCAGTCCCACACCAGC  
AAGTAGTAGTGCAGCTTCCATGGCAGAGGAGGAAGCATCTGCAGTCAGCACAGCGCCAGCCCACTTACC  
AAACTTCGCCGAGGCATGGATGAAAAGGAGTTTACAGTTCAAATCAAAGATGAGGAAGGATTGAAGTTAA  
CATTCCAGAAGCACAAGTTGATGGCGAATGGAGTAATGGGAGATGGACATCCACTGTTTCATAAGAAGAA  
GGGAACAGAAAAGGCTAGTAGAGCTGGAGGTGGAGTGCATGGAAGAGCCTAATCACCTTGATGTGGAC  
CTGGAGACCCGGATCCCTGTCAATAAAGGTGGATGGTACTTTGCTGGTGGTGAGGATGCCCCCTCGCC  
GGGCTGAACTGGAGATGTGTTACAGGGTCCATCCAGATTTGCTGTTGATCCCCGATTTCTAGCGTATAT  
GGAGGATCGCAGAAAACAGAAGTGGCAAAGATGAAAAAATAATAAGGCAGAATTGAACTGTTTGGGA  
ATGGAACCACTACAGACAGCTAACTCTAGAAATGGAAAAAGGGTCCATCACACTGAAACGGTGTTCACCC  
GGGTTTTGCCAGGCGCTATTGCACCAGAGAGCAGCAAGAAGCGGGCCCGTAGGATGCGACCAGACCTTTC  
TAAGATGATGGCCCTCATGCAGGTTGAAAGCACTGGGTCTCTATCTCTGCATAACACGTTCCAACACAGC  
AGTAGTGGCTACAGTCTGTGTCATCTTTGGTCCAGCAGTGCCACTTCTGCATCTTTGCCTTTTATGC  
CATTTGTGATGGGTGGTGCACCATCATCCCTCATGTAGACTCCAGCACCATGCTTCATCACCACCACCA  
CCACCCACCCACCATCACCACCATCACCATCCAGGCTTGAGAGCCCTGGCTACCCCTCTTACCA  
GTGACTACCGCTCTGGTACTACCTTGGGTTGCCACCACTGCAACCTGAGGAGGATGACGATGAGGATG  
AAGAAGATGATGACTTATCTCAGGGCTATGATAGCTCAGAAAGGGACTTCTCACTCATTGATGATCC  
TATGATGCCAGCTAACTCAGACTCCAGTGAAGATGCTGATGAC

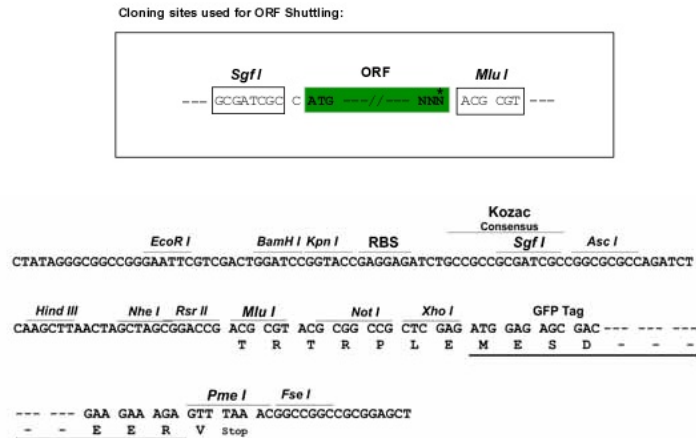
ACGCGTACGCGGCGCTCGAG - GFP Tag - GTTTAA

**Protein Sequence:** >RG230753 representing NM\_001170629  
 Red=Cloning site Green=Tags(s)

```
MADPIMDLFDDPNLFGLDSLTDSSFNQVTQDPIEEALGLPSSLDSLQMNQDGGGGDVGNSSASELVPPP
EETAPTELSKESTAPAPESITLHDYTTQPASQEQAQPVLQTSTPTSGLLQVSKSQEILSQGNPFMGVSA
TAVSSSSAGGQPPQSAPKIVILKAPPSSSVTGAHVAQIQAGITSTAQPLVAGTANGGKVFTTKVLTGTP
LRPGVSVISGNTVLAAKVPGNQAAVQRIVQPSRPVKQLVLPVKGSAPAGNPGATGPPLKPAVTLTSTPT
QGESKRITLVLQQPQSGGPQGHRHVVLGSLPGKIVLQGNQLAALTQAKNAQGQPAKVVTIQLQVQQPQQK
IQIVPQPSSQPQPQPPSTQPVTLSSVQQAQIMGPGQSPGQRLSVPVKVVLQPQAGSSQGASSGLSVVK
VLSASEVAALSSPASSAPHSGGKTGMEENRRLEHQKQKQEKANRIVAEIARARARGEQNIIPRVLNEDELP
SVRPEEEGEKRRRKSAGERLKEEKPKKSKTSGASKTKGSKLNTITPVVGKKRKRNTSSDNSDVEVMPA
QSPREDEESSIQRRSNRQVKKRYTEDLDIKITDDEEEEEVDVTGPIKPEPILPEPVQEPDGETLPSMQ
FFVENPSEEDAAIVDKVLSMIRIVKKELPQSGQYEAEEFFVKYKNYSYLHCEWATISQLEKDKRIHQKLR
FKTKMAQMRHFFHEDEEFPNDYVEVDRIIDESHSIDKNGEPIYYLVKWCSPYEDSTWELKEDVDEG
KIREFKRIQSRHPELKRVRNPQASAWKLELSHEYKNNQLREYQLEGVNWLWFNWNQRCILADEMGL
GKTIQSI AFLQEVYVNGIHGPFVIAPLSTITNWEREFNTWTEMNITIVYHGSLASRQMIQQYEMYCKDSR
GRLIPGAYKFDALITTFEMILSDCEPRLREIEWRCVIIIDEAHLRKNRCKLLDSLKHMDLEHKVLLTGTP
QNTVEELFSLHLFLEPSQFSESEFLKDFGDLKTEEQVQKLAAILKPMMLRRLKEDVEKNLAPKQETIIE
VELTNIQKKYYRAILEKNFSFLSKGAGHTNMPNLLNTMMELRCCNHPYLINGAEEKILTEFREACHIIIP
HDFHLQAMVRSAGKLVLDKLLPKLKAGGHKVLIFSQMVRCLDILEDYLQRRYLVERIDGRVGRNLRQA
AIDRFKPDSDRFVFLCTRAGGLINLTAADTCIIFSDWNPQNDLQAQARCHRIGQSKAVKVVYRLITR
NSYEREMFDKASLKLGLDKAVLQSMGRDGNITGIQQFSKKEIEDLLRKGAYAAIMEEDDEGSKFCEEDI
DQILLRRTTITIESEGKSTFAKASFVAENRTDISLDDPNFWQKWAKKADLMDLLNSKNNLVIDTPR
VRKQTRHFSTLKDDDLVEFSDLESEDDERPRRHRHAYGRTDGFRVEKHLLVYGWGRWRDILSHGRF
KRRMTERDVETICRAILVYCLLHYRGDENIKGFIWDLISPAENGTKEQLQNHSLSIPVPRGRKGGKVK
QSTFDIHKADWIRKYNPDTLFDQESYKHLKHQCNKVLLRVRMLYYLRQEVIGDQAEKVLGGAIASEIDI
WFPVVDQLEVPPTWWDSEADKSLIGVFKHGYEKYNTMRADPALCFLEKAGRPDDKAAIAEHRVLDNFS
IVEGVDFDKDCEDPEYKPLQGGPKDQDEGDPLMMMDDEISVIDGDEAQVTQQPGHLFWPPGSALTARLR
RLVTAYQRSYKREQMKIEAAERGDRRRRCEAAFKLKEIARREKQQRWTRREQDFYRVVSTFGVEYDPD
TMQFHWDRFRTFARLDKKTDES LTKYFHGFVAMCRQVCRLPPAAGDEPPDPNLFIEPI TEERASRTLYRI
ELLRRLREQVLCHPLLEDRLALCQPPGPELPKWWEPVRHDGELLRGAARHGVSQTDNCNIMQDPDFSLAA
RMNYMQNHQAGAPAPSLSRCSTPLLLHQQYTSRTASPLPLRPDAPVEKSPEETATQVPSLES LTKLEHEV
VARSRPTQDYEMRVSPSDTTPLVSRVPPVKLEDEDDSDSELDL SKLSPSSSSSSSSSSSSSTDESED
EKEEKLTDQSRSKLYDEESLLSLTMSQDGFNEDGEQMTPELLLLQERQRASEWPKDRVLINRIDLVCA
VLSGKWPSRRSQEMVTGGILGPNHLLDSPSLTPGEYGDSPVTPRSSSAASMAEEEA SAVSTAAAQFT
KLRRGMDEKEFTVQIKDEEGLKLTQKHKLMANGVMGDGHLFHKKKGNRKKLVELEVECMEEP NHLDVD
LETRIPVINKVDGTLVGEDAPRRAELEMWLQGHPEFAVDPRFLAYMEDRRKQKWQRCKNNKAE LNCLG
MEPVQTANSRNGKKGHHTETVFNRVLPGPIAPESKKRARRMRPDL SKMMALMQGGSTGSLSLHNTFQHS
SSGLQSVSSLGHSSATSASLPFMPFVMGGAPSSPHVDSSTMLHHHHHHHPHPPHHHHHHHPGLRAPGYPSSP
VTTASGTTLRLPPLQPEEDDEDEEDDDDL SQGYDSSERDFSLIDDPMPMPANS DSSSEDADD
```

TRTRPLE - GFP Tag - V

**Restriction Sites:** SgfI-MluI

**Cloning Scheme:**


**ACCN:** NM\_001170629

**ORF Size:** 7743 bp

**OTI Disclaimer:** Due to the inherent nature of this plasmid, standard methods to replicate additional amounts of DNA in E. coli are highly likely to result in mutations and/or rearrangements. Therefore, OriGene does not guarantee the capability to replicate this plasmid DNA. Additional amounts of DNA can be purchased from OriGene with batch-specific, full-sequence verification at a reduced cost. Please contact our customer care team at [custsupport@origene.com](mailto:custsupport@origene.com) or by calling 301.340.3188 option 3 for pricing and delivery.

The molecular sequence of this clone aligns with the gene accession number as a point of reference only. However, individual transcript sequences of the same gene can differ through naturally occurring variations (e.g. polymorphisms), each with its own valid existence. This clone is substantially in agreement with the reference, but a complete review of all prevailing variants is recommended prior to use. [More info](#)

**OTI Annotation:** This clone was engineered to express the complete ORF with an expression tag. Expression varies depending on the nature of the gene.

**Components:** The ORF clone is ion-exchange column purified and shipped in a 2D barcoded Matrix tube containing 10ug of transfection-ready, dried plasmid DNA (reconstitute with 100 ul of water).

- Reconstitution Method:**
1. Centrifuge at 5,000xg for 5min.
  2. Carefully open the tube and add 100ul of sterile water to dissolve the DNA.
  3. Close the tube and incubate for 10 minutes at room temperature.
  4. Briefly vortex the tube and then do a quick spin (less than 5000xg) to concentrate the liquid at the bottom.
  5. Store the suspended plasmid at -20°C. The DNA is stable for at least one year from date of shipping when stored at -20°C.

RefSeq: [NM\\_001170629.2](#)

RefSeq Size: 8254 bp

RefSeq ORF: 7746 bp

Locus ID: 57680

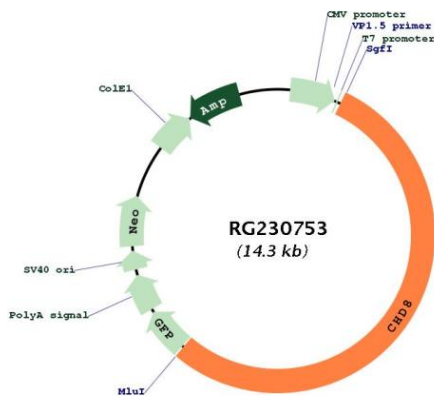
UniProt ID: [Q9HCK8](#)

Cytogenetics: 14q11.2

Protein Pathways: Wnt signaling pathway

**Gene Summary:** This gene encodes a member of the chromodomain-helicase-DNA binding protein family, which is characterized by a SNF2-like domain and two chromatin organization modifier domains. The encoded protein also contains brahma and kismet domains, which are common to the subfamily of chromodomain-helicase-DNA binding proteins to which this protein belongs. This gene has been shown to function in several processes that include transcriptional regulation, epigenetic remodeling, promotion of cell proliferation, and regulation of RNA synthesis. Allelic variants of this gene are associated with autism spectrum disorder. Alternative splicing results in multiple transcript variants. [provided by RefSeq, Dec 2016]

**Product images:**



Circular map for RG230753