

## Product datasheet for **RG230746**

### CACNA1C (NM\_001167625) Human Tagged ORF Clone

#### Product data:

Product Type:	Expression Plasmids
Product Name:	CACNA1C (NM_001167625) Human Tagged ORF Clone
Tag:	TurboGFP
Symbol:	CACNA1C
Synonyms:	CACH2; CACN2; CACNL1A1; CaV1.2; CCHL1A1; LQT8; TS; TS. LQT8
Mammalian Cell Selection:	Neomycin
Vector:	pCMV6-AC-GFP (PS100010)
E. coli Selection:	Ampicillin (100 ug/mL)
ORF Nucleotide Sequence:	>RG230746 representing NM_001167625 Red=Cloning site Blue=ORF Green=Tags(s)

TTTTGTAATACGACTCACTATAGGGCGGCCGGAATTCGTCGACTGGATCCGGTACCGAGGAGATCTGCC  
GCC**CGATCGCC**

ATGGTCAATGAGAATACGAGGATGTACATTCCAGAGGAAAACCACCAAGTTCCAACATGGGAGCCAC  
GCCCCGCCATGCCAACATGAATGCCAATGCGGCAGCGGGGCTGGCCCCCTGAGCACATCCCCACCCCGG  
GGCTGCCCTGTCGTGGCAGGCGGCCATCGACGCAGCCCGCAGGCTAAGCTGATGGGCAGCGCTGGCAAT  
GCGACCATCTCCACAGTCAGCTCCACGCAGCGGAAGCGGCAGCAATATGGGAAACCAAGAAGCAGGGCA  
GCACCACGGCCACAGCCCGCCCGAGCCCTGCTGCTGCTGACCTGAAGAACCCATCCGGAGGGCCTG  
CATCAGCATTGTCGAATGGAAACCAATTTGAAATAATTATTTACTGACTATTTTTGCCAATTGTGTGGCC  
TTAGCGATCTATATCCCTTTCCAGAAGATGATCCAACGCCACCAATCCAACCTGGAACGAGTGGAAAT  
ATCTCTTTCTCATAATTTTTACGGTGGAAGCGTTTTTAAAAGTAATCGCCTATGGACTCCTCTTTACCC  
CAATGCCTACCTCCGCAACGGCTGGAACCTACTAGATTTATAATTGTGGTTGTGGGGCTTTTTAGTGCA  
ATTTTAGAACAAGCAACCAAGCAGATGGGGCAAACGCTCTCGGAGGGAAAGGGCCGGATTTGATGTGA  
AGGCGTGAGGGCCTCCGCGTGTGCGCCCCCTGCGGCTGGTGTCCGGAGTCCCAAGTCTCCAGGTGGT  
CCTGAATTCATCATCAAGGCCATGGTCCCCCTGCTGCACATCGCCCTGCTTGTGCTGTTGTGCATCATC  
ATCTACGCCATCATCGGCTTGGAGCTCTCATGGGGAAGATGCACAAGACCTGTACAACCAGGAGGGCA  
TAGCAGATGTTCCAGCAGAAGATGACCCTTCCCCTTGTGCGCTGGAAACGGGCCACGGCCGCGCAGTGCCA  
GAACGGCACGGTGTGCAAGCCCGCTGGGATGGTCCCAAGCACGGCATCACCAACTTTGACAACCTTTGCC  
TTCGCCATGCTCACGGTGTCCAGTGCATACCATGGAGGGCTGGACGGACGTGCTGACTGGATGCAGG  
ACGCTATGGGCTATGAGTTACCTGGGTGATTTTTGTCAGTCTGGTCATCTTTGGATCCTTTTTCGTTCT  
AAATCTGGTTCTCGGTGTGTTGAGCGGAGATTTTCAAAGAGAGGGAGAAGGCCAAGGCCCGGGGAGAT  
TTCCAGAAGCTGCGGGAGAAGCAGCAGCTAGAAGAGGATCTCAAAGGCTACCTGGATTGGATCACTCAGG  
CCGAAGACATCGATCCTGAGAATGAGGACGAAGGCATGGATGAGGAGAAGCCCCGAAACATGAGCATGCC  
CACCAGTGAGACCGAGTCCGTCAACACCGAAAACGTGGCTGGAGGTGACATCGAGGGAGAAAACCTCGGG



[View online >](#)

GCCAGGCTGGCCACCGGATCTCCAAGTCAAAGTTCAGCCGCTACTGGCGCCGGTGAATCGGTTCTGCA  
 GAAGGAAGTGCCGCGCCGAGTCAAGTCTAATGTCTTCTACTGGCTGGTATTTTCTGGTGTCTCTCAA  
 CACGCTCACCATTTGCCTCTGAGCACTACAACCAGCCAACTGGCTCACAGAAGTCCAAGACACGGCAAAC  
 AAGGCCCTGCTGGCCCTGTTACGGCAGAGATGCTCCTGAAGATGTACAGCCTGGGCCTGCAGGCCACT  
 TCGTGTCCCTCTCAACCGCTTTGACTGCTTCGTGTGTGGCGGCATCCTGGAGACCATCCTGGTGA  
 GACCAAGATCATGTCCCACTGGGCATCTCCGTGCTCAGATGCGTCCGGCTGTGAGGATTTTCAAGATC  
 ACGAGGTACTGGAACCTTTGACCAACCTGGTGGCATCCTTGTGAACCTGTGCGCTCCATCGCCTCCC  
 TGCTCCTTCTCCTTCTCCTTTCATCATCTTCTCCCTCCTGGGGATGCAGCTCTTGGAGGAAAGTT  
 CAACTTTGATGAGATGCAGACCCGGAGGAGCACATTGATAAATTCCCCAGTCCCTCCTACTGTGTTT  
 CAGATCCTGACCGGGGAGGACTGGAATTCGGTGTATGATGAGGATCATGGCTTATGGCGGCCCTCTT  
 TTCCAGGGATGTTAGTCTGTATTTACTTTCATCATCCTCTTTCATCTGTGAAACTATATCCTACTGAATG  
 GTTCTTGGCCATTGCTGTGGACAACCTGGCTGTGCTGAGAGCCTCACATCTGCCAAAAGGAGGAGGAA  
 GAGGAGAAGGAGAGAAAGAAGCTGGCCAGGACTGCCAGCCAGAGAAGAAACAAGAGTTGGTGGAGAAGC  
 CGGCAGTGGGGAAATCCAAGGAGGAGAAGATTGAGCTGAAATCCATCACGGCTGACGGAGAGTCTCCACC  
 CGCCACCAAGATCAACATGGATGACCTCCAGCCAAATGAAAATGAGGATAAGAGCCCTACCCCAACCCA  
 GAAACTACAGGAGAAGAGGATGAGGAGGAGCCAGAGATGCTGTGGCCCTCGCCACGACCACTCTCTG  
 AGCTTACCTTAAGGAAAAGGCAGTGCCCATGCCAGAAGCCAGCGCTTTTTTCATCTTACGCTCTAACAA  
 CAGGTTTCGCCTCCAGTGCCACCGCATTGTCAATGACACGATCTTACCACCTGATCCTTCTTTCATT  
 CTGCTCAGCAGCATTTCCCTGGCTGCTGAGGACCCGGTCCAGCACACCTCCTCAGGAACCATATTTCTGT  
 TTTATTTTGATATTGTTTTTACCACATTTTACCATTGAAATGCTCTGAAGATGACTGCTTATGGGGC  
 TTTCTTGACAAGGGTCTTTCTGCCGAACTACTTCAACATCCTGGACCTGCTGGTGGTCCAGCGTGTCC  
 CTCATCTCCTTTGGCATCCAGTCCAGTCAATCAATGCTGTGAAGATCTTGGAGTCTGCGGACTACTCA  
 GGCCCTGAGGGCCATCAACAGGGCCAAGGGCTAAAGCATGTGGTTCAGTGTGTGTTTTGCGCCATCCG  
 GACCATCGGGAACATCGTGATTGTCACCACCCTGCTGCAGTTCATGTTTGCCTGCATCGGGTCCAGCTC  
 TTCAAGGGAAGCTGTACACCTGTTGACACAGTTCCAAGCAGACAGAGGCGGAATGCAAGGGCAACTACA  
 TCACGTACAAAGACGGGGAGGTTGACCACCCCATCATCCAACCCCGCAGCTGGGAGAACAGCAAGTTTGA  
 CTTTGACAATGTTCTGGCAGCCATGATGGCCCTTTCACCGTCTCCACCTTGAAGGGTGGCCAGAGCTG  
 CTGTACCCTCCATCGACTCCCACAGGAAGACAAGGGCCCATCTACAACCTACCGTGTGGAGATCTCCA  
 TCTTCTTTCATCATCTACATCATCATCATCGCTTCTTTCATGATGAACATCTTCTGGGCTTCGTCATCGT  
 CACCTTTCAGGAGCAGGGGAGCAGGAGTACAAGAACTGTGAGCTGGACAAGAACCAGCAGCAGTGCCTG  
 GAATACGCCCTCAAGGCCGGCCCTGCGGAGGTACATCCCAAGAACCAGCACCAGTACAAGTGTGGT  
 ACGTGGTCAACTCCACTACTTCGAGTACTGATGTTCTGCTCCTCATCCTGCTCAACACCATCTGCCTGGC  
 CATGCAGCACTACGGCCAGAGCTGCCTGTTCAAAATCGCCATGAACATCCTCAACATGCTCTTACTGGC  
 CTCTTACCGTGGAGATGATCCTGAAGCTCATTGCCTTCAAACCAAGCACTATTTCTGTGATGCATGGA  
 ATACATTTGACGCCTTGATTGTTGTGGGTAGCATTGTTGATATAGCAATCACCGAGGTAACAACGCAGA  
 GGAAAACCTCCGCATCTCCATCACCTTCTTCCGCTGTTCCGGGTGATGCGTCTGGTGAAGCTGTGAGC  
 CGTGGGGAGGGCATCCGGACGCTGCTGTGGACCTTTCATCAAGTCTTCCAGGCCCTGCCATGTGGCCC  
 TCCTGATCGTGTGCTGTTCTTTCATCTACGCGGTGATCGGGATGCAGGTGTTGGGAAAATGCCCCTGAA  
 TGATACCACAGAGATCAACCGGAACAACAACCTTTCAGACCTTCCCCAGGCCGTGCTCCTCTCAGG  
 TGTGCCACCGGGAGGCCCTGGCAGGACATCATGCTGGCTGCATGCCAGGCAAGAAGTGTGCCCCAGAGT  
 CCGAGCCAGCAACAGCACGGAGGGTGAACACCCCTGTGGTAGCAGCTTTGCTGTCTTACTTTCATCAG  
 CTTCTACATGCTCTGTGCCTTCTGATCATCAACCTCTTTGTAGCTGTTCATGAGCAACTTTGACTAC  
 CTGACAAGGGACTGGTCCATCCTTGGTCCCCACCCTGGATGAGTTTAAAAGAATCTGGGCAGAGTATG  
 ACCCTGAAGCCAAGGGTCTGATCAAAACCTGGATGTGGTACCCTCCTCCGGCGGATTACGCCCCACT  
 AGGTTTTGGGAAGCTGTGCCCTACCGCGTGGCTTCAAACGCCTGGTCTCCATGAACATGCCTCTGAAC  
 AGCGACGGGACAGTCAATGTTCAATGCCACCTGTTTGGCCTGGTCAAGACGGCCCTGAGGATCAAAACAG  
 AAGGGAACCTAGAACAAGCCAATGAGGAGCTGCGGGCGATCATCAAGAAGATCTGGAAGCGGACCAGCAT  
 GAAGCTGCTGGACCAGGTGGTGCCTTGCAGGTGATGATGAGGTACCCTTGGCAAGTTCTACGCCAGG  
 TTCTGATCCAGGAGTACTTCCGGAAGTTCAAGAAGCGCAAGAGCAGGGCCTTGTGGGCAAGCCCTCCC  
 AGAGGAACGCGCTGTCTCTGAGGCTGGCTTGGCAGACTGATGACATCGGGCTGAGATCCGACGGGC  
 CATCTCTGGAGATCTCACCGCTGAGGAGGAGCTGGACAAGGCCATGAAGGAGGCTGTGTCGCTGCTTCT  
 GAAGATGACATCTTACGAGGGCCGGTGGCCTGTTCCGCAACCACGTGAGTACTACAAAGCGACGGCC

GGAGCGCCTTCCCCAGACCTTCACTACTCAGCGCCCGCTGCACATCAACAAGGCGGGCAGCAGCCAGGG  
CGACTGAGTCGCCATCCCACGAGAAGCTGGTGGACTCCACCTTACCCCGAGCAGCTACTCGTCCACC  
GGCTCCAACGCCAACATCAACAACGCCAACACCCGCTGGGTGCGCTCCCTCGCCCCGCCGGCTACC  
CCAGCAGGTCAGCACTGTGGAGGGCCACGGGCCCCCTTGTCCCCTGCCATCCGGGTGCAGGAGGTGGC  
GTGGAAGCTCAGTCCAACAGGATGACTGCTGTGACATGCTGGATGGTGGGACCTTCCCTCCCGCCCTG  
GGCCCCGCAGGGCTCCTCCCTGTCTGCATCAGCAGCTCCAGGGTTCCCTGGCGGGGCTGAGAGAGGACA  
CACCTGCATCGTGCCTGGCCACGCTTCACTGTGCTGCTTCCAGAGTAGGAGAGTGGTCCCAGCAGG  
CTGCACAGCCCCCAGCATGCCAGGTGCCACTCCCGGGAGAGCCAGGCAGCCATGGCGGGTCAGGAGGAG  
ACGTCTCAGGATGAGACCTATGAAGTGAAGATGAACCATGACACGAGGCCTGCAGTGAGCCCAGCCTGC  
TCTCCACAGAGATGCTCTCCTACCAGGATGACGAAAATCGGCAACTGACGCTCCCAGAGGAGGACAAGAG  
GGACATCCGGCAATCTCCGAAGAGGGTTTCTCCGCTCTGCCTCACTAGGTGGAAGGGCTCCTCCAC  
CTGGAATGTCTGAAGCGACAGAAGGACCGAGGGGGAGACATCTCTCAGAAGACAGTCTGCCCTTGATC  
TGGTTCATCATCAGGCATTGGCAGTGGCAGGCCTGAGCCCCCTCCTCCAGAGAAGCCATTCCCTGCCTC  
ATCCCTAGGCCTTTTGCCACCCACCAGCCACACCTGGCAGCCGAGGCTGGCCCCACAGCCCGTCCCC  
ACCTGCGGCTTGAGGGGTCGAGTCCAGTGAGAACTCAACAGCAGCTTCCATCCATCCACTGCGGCT  
CCTGGGCTGAGACCACCCCGGTGGCGGGGCAGCAGCGCCCGGAGAGTCCGGCCCGTCTCCCTCAT  
GGTGCCAGCCAGGCTGGGGCCCCAGGGAGGCAGTTCCACGGCAGTGCCAGCAGCCTGGTGAAGCGGT  
TTGATTTGAGAAGGACTGGGGCAGTTTGTCAAGATCCCAAGTTCATCGAGGTACCACCCAGGAGCTGG  
CCGACGCTGCGACATGACCATAGAGGAGATGGAGAGCGCGCCGACAACATCCTCAGCGGGGGCGCCCC  
ACAGAGCCCCAATGGCGCCCTTTACCCTTTGTGAAGTGCAGGGACCGGGGCAGGACCGAGCCGGGGGC  
GAAGAGGACCGGGCTGTGTGCGCGCGGGGTCGACCGAGTGAAGAGGAGCTCCAGGACAGCAGGGTCT  
ACGTCAGCAGCCTG

ACGCGTACGCGGCCGCTCGAG - GFP Tag - GTTTAA

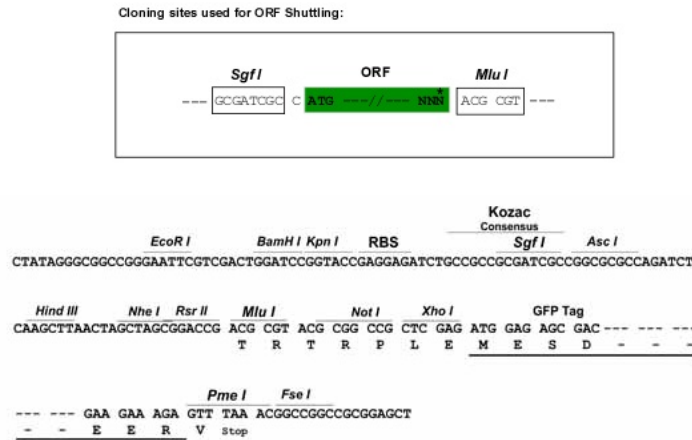
**Protein Sequence:** >RG230746 representing NM\_001167625  
 Red=Cloning site Green=Tags(s)

```
MV NENTRMYIPEENHQGSNYGSPRPAHANMNANAAAGLAPEHIPTPGAALSWQAAIDAARQAKLMGSAGN
ATISTVSTQRKRQYQYKPKKQGSTTATRPPRALLCLTLKNPIRRACISIVEWKPFEEIIILLTIFANCVA
LAIYIPFPEDDSNATNSNLERVEYLFLLIIFTVEAFLKVIAYGLLFHPNAYLRNGWNLLDFIIVVGLFSA
ILEQATKADGANALGGKAGFDVKALRAFRVLRPLRLVSGVPSLQVVLNSIIKAMVPLLHIALLVLFVII
IYAIIGLELFMGKMHKTCYNQEGIADVPAEDDPSPCALETGHGRQCQNGTVCKPGWDGPKHGITNFDNFA
FAMLTVFQCITMEGWTDVLYWMQDAMGYELPWYVFVSLVIFGSFFVLNLVLGVLSEFSGKEREKAKARGD
FQKLRKQQLLEEDLKGYLWDWITQAEDIDPENEDEGMDEEKPRNMSMPTSETESVNTENVAGGDIEGENCG
ARLAHRISKSKFSRYWRRWNRFCRRKCAAVKSNVFWLVI FLVFLNLT IASEHYNQPNWLTEVQDTAN
KALLALFTAEMLLKMYSGLQAYFVSLFNRFDCFVVCGGILETILVETKIMSPLGISVLRVLRLLRIFKI
TRYWNSLNLVALLNSVRSIASLLLLLFLFIIIFSLGMLFGGKFNDEMQRTRSTFDNFPQSLLTVF
QILTGEDWNSVMYDGMAYGGPSFPGMLVCIYFIIILFICGNYILLNVFLAIAVDNLADAESLTSAQKEE
EEKERKKLARTASPEKKQELVEKPAVGESKEEKIELKSITADGESPPATKINMDDLQPNENEDKSPYPNP
ETTGEDEEEPEMPVGRPRPLSELHLKEKAVPMPEASAFFIFSSNNRFRQLQCHRIVNDTIFTNLILFFI
LLSSISLAAEDPVQHTSFRNHILFYFDIVFTTIFTIEIALKMTAYGAFLHKGSFCRNYFNILDLLVVSVS
LISFGIQSSAINVVKILRVLRLRPLRAINRAKGLKHVVQCVFVAIRTIIGNIVIVITLLQFMFACIGVQL
FKGKLYTCSDDSKQTEAECKGNVITYKDGVDHP IIQPRSWENSKFDFDNVLAAMMALFTVSTFEGWPEL
LYRSIDSHTEKGP IYNRYVEISIFFIIYIIIIAFFMMNIFVGFVIVTFQEQGEQEYKNCELDKNQRQCV
EYALKARPLRRYIPKNQHQQYKVVWVYVNSTYFEYLMFVILLNLTICLAMQHYGQSCLFKIAMNILNMLFTG
LFTVEMILKLI AFKPKHYFCDAWNTFDALIVVGSIVDIAITEVNNAEENSRSITFFRLFRVMRLVKLLS
RGEGIRTLWTFIKSFQALPYVALLIVMLFFIYAVIGMQVFGKIALNDTTEINRNNNFQTFPQAVLLLFR
CATGEAWQDIMLACMPGKKCAPESEPSNSTEGETPCGSSFAVFYFISFYMLCAFLIINLFAVIMDNFDY
LTRDWSILGPHHLDEFKRIWAEYDPEAKGRIKHLDVVTLLRRIQPPLGFGKLCPHRVACKRLVSMNMLN
SDGTVMFNATL FALVRTALRIKTEGNLEQANEELRAIIKKIWKRTSMKLLDQVVPVPPAGDDEVTVGKFYAT
FLIQEYFRKFKRKEQGLVGKPSQRNALSLQAGLRTLHDIGPEIRRAISGDLTAEELDKAMKEAVSAAS
EDDIFRRAGGLFGNHVSYQSDGRSAFPQTFTTQRPLHINKAGSSQGDTESPSHEKLV DSTFTPSSYSST
GSNANINNANNTALGRLPRPAGYPSTVSTVEGHGPPLSPAIRVQEVAVKLSNRMHCCDMLDGGTFPPAL
GPRRAPPCLHQQLQGLAGLREDTPCIVPGHASLCCSSRVGEWLPAGCTAPQHARCHSRESQAAMAGQEE
TSQDETYEVKMNHDTEACSEPSLLSTEMLSYQDDENRQLTLPEEDKRDIRQSPKRGFLRSASLGRASFH
LECLKRQKDRGGDISQKTVLPLHLVHHQALAVAGLSPLLQRSHSPASFPFPFATPPATPGSRGWPPQVVP
TLRLEGVESSEKLNSSFPSIHCGSWAETTPGGGSSAARRVRPVSLMVPVQAGAPGRQFHGSASSLVEAV
LISEGLGQFAQDPKPIEVTTQELADACDMTIEEMESAADNILSGGAPQSPNGALLPFVNCRDAGQDRAGG
EEDAGCVRARGRPSEELQDSRVYVSSL
```

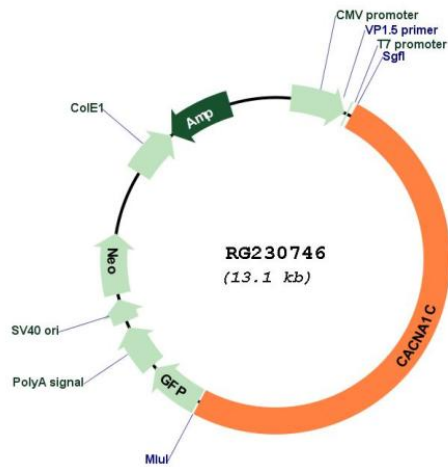
TRTRPLE - GFP Tag - V

**Restriction Sites:** SgfI-MluI

Cloning Scheme:



Plasmid Map:



ACCN: NM\_001167625

ORF Size: 6594 bp

OTI Disclaimer: The molecular sequence of this clone aligns with the gene accession number as a point of reference only. However, individual transcript sequences of the same gene can differ through naturally occurring variations (e.g. polymorphisms), each with its own valid existence. This clone is substantially in agreement with the reference, but a complete review of all prevailing variants is recommended prior to use. [More info](#)

OTI Annotation: This clone was engineered to express the complete ORF with an expression tag. Expression varies depending on the nature of the gene.

<b>Components:</b>	The ORF clone is ion-exchange column purified and shipped in a 2D barcoded Matrix tube containing 10ug of transfection-ready, dried plasmid DNA (reconstitute with 100 ul of water).
<b>Reconstitution Method:</b>	<ol style="list-style-type: none"><li>1. Centrifuge at 5,000xg for 5min.</li><li>2. Carefully open the tube and add 100ul of sterile water to dissolve the DNA.</li><li>3. Close the tube and incubate for 10 minutes at room temperature.</li><li>4. Briefly vortex the tube and then do a quick spin (less than 5000xg) to concentrate the liquid at the bottom.</li><li>5. Store the suspended plasmid at -20°C. The DNA is stable for at least one year from date of shipping when stored at -20°C.</li></ol>
<b>RefSeq:</b>	<u><a href="#">NM_001167625.1</a></u> , <u><a href="#">NP_001161097.1</a></u>
<b>RefSeq Size:</b>	13660 bp
<b>RefSeq ORF:</b>	6597 bp
<b>Locus ID:</b>	775
<b>UniProt ID:</b>	<u><a href="#">Q13936</a></u>
<b>Cytogenetics:</b>	12p13.33
<b>Protein Families:</b>	Druggable Genome, Ion Channels: Calcium, Transmembrane
<b>Protein Pathways:</b>	Alzheimer's disease, Arrhythmogenic right ventricular cardiomyopathy (ARVC), Calcium signaling pathway, Cardiac muscle contraction, Dilated cardiomyopathy, GnRH signaling pathway, Hypertrophic cardiomyopathy (HCM), Long-term potentiation, MAPK signaling pathway, Type II diabetes mellitus, Vascular smooth muscle contraction
<b>Gene Summary:</b>	This gene encodes an alpha-1 subunit of a voltage-dependent calcium channel. Calcium channels mediate the influx of calcium ions into the cell upon membrane polarization. The alpha-1 subunit consists of 24 transmembrane segments and forms the pore through which ions pass into the cell. The calcium channel consists of a complex of alpha-1, alpha-2/delta, beta, and gamma subunits in a 1:1:1:1 ratio. There are multiple isoforms of each of these proteins, either encoded by different genes or the result of alternative splicing of transcripts. The protein encoded by this gene binds to and is inhibited by dihydropyridine. Alternative splicing results in many transcript variants encoding different proteins. Some of the predicted proteins may not produce functional ion channel subunits. [provided by RefSeq, Oct 2012]