

## Product datasheet for **RG230745**

### CACNA1C (NM\_001167624) Human Tagged ORF Clone

#### Product data:

Product Type:	Expression Plasmids
Product Name:	CACNA1C (NM_001167624) Human Tagged ORF Clone
Tag:	TurboGFP
Symbol:	CACNA1C
Synonyms:	CACH2; CACN2; CACNL1A1; CaV1.2; CCHL1A1; LQT8; TS; TS. LQT8
Mammalian Cell Selection:	Neomycin
Vector:	pCMV6-AC-GFP (PS100010)
E. coli Selection:	Ampicillin (100 ug/mL)
ORF Nucleotide Sequence:	>RG230745 representing NM_001167624 Red=Cloning site Blue=ORF Green=Tags(s)

TTTTGTAATACGACTCACTATAGGGCGGCCGGAATTCGTCGACTGGATCCGGTACCGAGGAGATCTGCC  
GCC**CGATCGCC**

ATGGTCAATGAGAATACGAGGATGTACATTCCAGAGGAAAACCACCAAGTTCCAACATGGGAGCCAC  
GCCCCGCCATGCCAACATGAATGCCAATGCGGCAGCGGGGCTGGCCCCCTGAGCACATCCCCACCCCGG  
GGCTGCCCTGTCGTGGCAGGCGGCCATCGACGCAGCCCGCAGGCTAAGCTGATGGGCAGCGCTGGCAAT  
GCGACCATCTCCACAGTCAGCTCCACGCAGCGGAAGCGGCAGCAATATGGGAAACCAAGAAGCAGGGCA  
GCACCACGGCCACAGCCCGCCCGAGCCCTGCTCTGCCTGACCCTGAAGAACCCATCCGGAGGGCCTG  
CATCAGCATTGTCGAATGGAAACCAATTTGAAATAATTATTTACTGACTATTTTGGCAATTGTGTGGCC  
TTAGCGATCTATATCCCTTTCCAGAAGATGATCCAACGCCACCAATCCAACCTGGAACGAGTGGAAAT  
ATCTCTTTCTCATAATTTTACGGTGGAAGCGTTTTTAAAAGTAATCGCCTATGGACTCCTCTTTACCC  
CAATGCCTACCTCCGCAACGGCTGGAACCTACTAGATTTATAATTGTGGTTGTGGGGCTTTTTAGTGCA  
ATTTTAGAACAAGCAACCAAGCAGATGGGGCAAACGCTCTCGGAGGGAAAGGGCCGGATTTGATGTGA  
AGGCGTGAGGGCCTCCGCGTGTGCGCCCCCTGCGGCTGGTGTCCGGAGTCCCAAGTCTCCAGGTGGT  
CCTGAATTCATCATCAAGGCCATGGTCCCCCTGCTGCACATCGCCCTGCTTGTGCTGTTGTGCATCATC  
ATCTACGCCATCATCGGCTTGGAGCTCTCATGGGGAAGATGCACAAGACCTGTACAACCAGGAGGGCA  
TAGCAGATGTTCCAGCAGAAGATGACCCTTCCCCTTGTGCGCTGGAAACGGGCCACGGCCGCGCAGTGCCA  
GAACGGCACGGTGTGCAAGCCCGCTGGGATGGTCCCAAGCACGGCATACCAACTTTGACAACCTTTGCC  
TTCGCCATGCTCACGGTGTCCAGTGCATACCATGGAGGGCTGGACGGACGTGCTGACTGGATGCAGG  
ACGCTATGGGCTATGAGTTACCTGGGTGATTTTGTGCTGCTGGTATCTTTGGATCCTTTTTCGTTCT  
AAATCTGGTTCTCGGTGTGTTGAGCGGAGATTTTCAAAGAGAGGGAGAAGGCCAAGGCCCGGGGAGAT  
TTCCAGAAGCTGCGGGAGAAGCAGCAGCTAGAAGAGGATCTCAAAGGCTACCTGGATTGGATCACTCAGG  
CCGAAGACATCGATCCTGAGAATGAGGACGAAGGCATGGATGAGGAGAAGCCCCGAAACATGAGCATGCC  
CACCAGTGAGACCGAGTCCGTCAACACCGAAAACGTGGCTGGAGGTGACATCGAGGGAGAAAACCTCGGG



[View online >](#)

GCCAGGCTGGCCACCGGATCTCCAAGTCAAAGTTCAGCCGCTACTGGCGCCGGTGAATCGGTTCTGCA  
 GAAGGAAGTGCCGCGCCGAGTCAAGTCTAATGTCTTCTACTGGCTGGTATTTTCTGGTGTCTCTCAA  
 CACGCTCACCAATTGCCTCTGAGCACTACAACCAGCCAACTGGCTCACAGAAGTCCAAGACACGGCAAAC  
 AAGGCCCTGCTGGCCCTGTTACGGCAGAGATGCTCCTGAAGATGTACAGCCTGGGCCTGCAGGCCACT  
 TCGTGTCCCTCTCAACCGCTTTGACTGCTTCGTGTGTGGCGGCATCCTGGAGACCATCCTGGTGA  
 GACCAAGATCATGTCCCACTGGGCATCTCCGTGCTCAGATGCGTCCGGCTGTGAGGATTTTCAAGAT  
 ACGAGGTACTGGAACCTTTGAGCAACCTGGTGGCATCCTTGTGAACCTGTGCGCTCCATCGCCTCCC  
 TGCTCCTTCTCCTTCTCCTTTCATCATCTTCTCCCTCCTGGGGATGCAGCTCTTTGGAGGAAAGTT  
 CAACTTTGATGAGATGCAGACCCGGAGGAGCACATTTCGATAAATTCCCCAGTCCCTCCTACTGTGTTT  
 CAGATCCTGACCGGGGAGGACTGGAATTCGGTGTATGATGAGGATCATGGCTTATGGCGGCCCTCTT  
 TTCCAGGGATGTTAGTCTGTATTTACTTTCATCATCCTCTTTCATCTGTGAAAATATATCCTACTGAATGT  
 GTTCTTGGCCATTGCTGTGGACAACCTGGCTGATGCTGAGAGCCTCACATCTGCCAAAAGGAGGAGGAA  
 GAGGAGAAGGAGAGAAAGAAGCTGGCCAGGACTGCCAGCCAGAGAAGAAACAAGAGTTGGTGGAGAAGC  
 CGGCAGTGGGGAAATCCAAGGAGGAGAAGATTGAGCTGAAATCCATCACGGCTGACGGAGAGTCTCCACC  
 CGCCACCAAGATCAACATGGATGACCTCCAGCCAAATGAAAATGAGGATAAGAGCCCTACCCAAACCA  
 GAAACTACAGGAGAAGAGGATGAGGAGGAGCCAGAGATGCTGTGGCCCTCGCCACGACCACTCTCTG  
 AGCTTACCTTAAGGAAAAGGCAGTGCCCATGCCAGAAGCCAGCGGTTTTTTCATCTTACGCTCTAACAA  
 CAGGTTTCGCCTCCAGTGCCACCGCATTGTCAATGACACGATCTTACCACCTGATCCTTCTTTCATT  
 CTGCTCAGCAGCATTTCCCTGGCTGCTGAGGACCCGGTCCAGCACACCTCCTTACGGAACCATATTTCTGT  
 TTTATTTTGATATTGTTTTTACCACATTTTACCATTGAAATGCTCTGAAGATGACTGCTTATGGGGC  
 TTTCTTGACAAGGGTCTTTCTGCCGAACTACTTCAACATCCTGGACCTGCTGGTGGTCCAGCGTGTCC  
 CTCATCTCCTTTGGCATCCAGTCCAGTCAATCAATGTCGTGAAGATCTTGGAGTCTCGGACTACTCA  
 GGCCCTGAGGGCCATCAACAGGGCCAAGGGGCTAAAGCATGTGGTTCAGTGTGTGTTTGTGCCATCCG  
 GACCATCGGGAACATCGTGATTGTCACCACCCTGCTGCAGTTCATGTTTGCCTGCATCGGGCTCCAGCTC  
 TTCAAGGGAAGCTGTACACCTGTTACAGACAGTCCAAGCAGACAGAGGGGAATGCAAGGGCAACTACA  
 TCACGTACAAAGACGGGGAGGTTGACCACCCCATCATCCAACCCCGCAGCTGGGAGAACAGCAAGTTTGA  
 CTTTGACAATGTTCTGGCAGCCATGATGGCCCTTTCACCGTCTCCACCTTTCGAAGGGTGGCCAGAGCTG  
 CTGTACCCTCCATCGACTCCCACAGGAAGACAAGGGCCCATCTACAACCTACCGTGTGGAGATCTCCA  
 TCTTCTTTCATCATCTACATCATCATCATCGCTTCTTTCATGATGAACATCTTCGTGGGCTTCGTCATCGT  
 CACCTTTCAGGAGCAGGGGAGCAGGAGTACAAGAACTGTGAGCTGGACAAGAACCAGCAGCAGTGCCTG  
 GAATACGCCCTCAAGGCCGGCCCTGCGGAGGTACATCCCAAGAACCAGCACCAGTACAAGTGTGGT  
 ACGTGGTCAACTCCACTACTTCGAGTACTGATGTTCTGCTCATCCTGCTCAACACCATCTGCCTGGC  
 CATGCAGCACTACGGCCAGAGCTGCCTGTTCAAAATCGCCATGAACATCCTCAACATGCTCTTACTGGC  
 CTCTTACCGTGGAGATGATCCTGAAGCTCATTGCCTTCAAACCAAGGGTTACTTTAGTGTATCCCTGGA  
 ATGTTTTGACTTCTCATCGTAATTGGCAGCATAATTGACGTATTCTCAGTGAGACTAATCCAGCTGA  
 ACATACCAATGCTCTCCCTCTATGAACGCAGAGGAAAACCTCCGCATCTCCATCACCTTCTTCCGCTG  
 TTCCGGTTCATGCGTCTGGTGAAGCTGCTGAGCCGTGGGAGGGCATCCGGACGCTGCTGTGGACCTTCA  
 TCAAGTCTTCCAGGCCCTGCCATGTGGCCCTCCTGATCGTGATGCTGTTCTTTCATCTACGCGGTGAT  
 CGGGATGCAGGTGTTGGGAAAATGCCCCTGAATGATACCACAGAGATCAACCGGAACAACAATTTGAG  
 ACCTTCCCCAGCCGTGCTGCTCCTTTCAGGTGTGCCACCGGGGAGGCCTGGCAGGACATCATGCTGG  
 CCTGCATGCCAGGCAAGAAGTGTGCCCCAGAGTCCGAGCCAGCAACAGCACGGAGGGTGAACACCCTG  
 TGGTAGCAGCTTGTGTCTTACTTTCATCAGCTTCTACATGCTCTGTGCCTTCTGATCATCAACCTC  
 TTTGTAGTGTTCATCATGGACAACCTTGTACTACCTGACAAGGGACTGGTCCATCCTTGGTCCCCACCACC  
 TGGATGAGTTTAAAAGAATCTGGGCAGAGTATGACCTGAAGCCAAGGGTTCGATCAAACACCTGGATGT  
 GGTGACCTCCTCCGGCGGATTCAGCCGCCACTAGTTTTGGGAAGCTGTGCCCTACCCGCTGGCTTGC  
 AAACGCTGGTCTCCATGAACATGCCTCTGAACAGCGACGGGACAGTTCATGTTCAATGCCACCCTGTTT  
 CCCTGGTTCAGGACGGCCCTGAGGATCAAACAGAAAGGAACTAGAACAAAGCCAATGAGGAGCTGCGGGC  
 GATCATCAAGAAGATCTGGAAGCGGACCAGCATGAAGCTGCTGGACCAGGTGGTGGCCCTGCGAGTGAT  
 GATGAGGTCAACGTTGGCAAGTTCTACGCCAGTTCCTGATCCAGGAGTACTTCCGGAAGTTCAAGAAGC  
 GCAAAGAGCAGGGCCTTGTGGGCAAGCCCTCCCAGAGGAACGCGCTGTCTCTGCAGGCTGGCTTGCAC  
 ACTGCATGACATCGGGCCTGAGATCCGACGGGCCATCTCTGGAGATCTCACCGCTGAGGAGGAGCTGGAC  
 AAGCCATGAAGGAGGCTGTGTCGGCTGCTTCTGAAGATGACATCTTTCAGGAGGGCCGGTGGCCTGTTCC

GCAACCACGTCAGCTACTACCAAAGCGACGGCCGGAGCGCCTTCCCCAGACCTTCACTCAGCGCCC  
GCTGCACATCAACAAGGCGGGCAGCAGCCAGGGCGACTGAGTCGCCATCCCACGAGAAGCTGGTGGAC  
TCCACCTTCAACCCGAGCAGCTACTCGTCCACCGGCTCCAACGCCAACATCAACAACGCCAACACCCG  
CCCTGGGTCGCCCTCCCTCGCCCCGCCGGTACCCAGCACGGTCAGCACTGTGGAGGGCCACGGGCCCC  
CTTGTCCCCTGCCATCCGGGTGCAGGAGGTGGCGTGAAGCTCAGCTCCAACAGGAAAGGCACGTTCCG  
ATGTGTGAGGATCTGGAGCTCAGGAGGGATTGAGGCTCAGCAGGGACTCAGGCTCACTGCCTTCTGCTCA  
GGAAAGCAAACCCCTCTAGGTGCCACTCCCGGGAGAGCCAGGCAGCCATGGCGGGTCAGGAGGAGACGTC  
TCAGGATGAGACCTATGAAGTGAAGATGAACCATGACACGGAGGCCTGCAGTGAGCCAGCCTGCTCTCC  
ACAGAGATGCTCTCCTACCAGGATGACGAAAATCGGCAACTGACGCTCCCAGAGGAGGACAAGAGGGACA  
TCCGGCAATCTCCGAAGAGGGGTTTCTCCGCTCTGCCTCACTAGGTGCAAGGGCCTCCTTCCACCTGGA  
ATGTCTGAAGCGACAGAAGGACCGAGGGGGAGACATCTCTCAGAAGACAGTCCTGCCCTTGCATCTGGTT  
CATCATCAGGCATTGGCAGTGGCAGGCCTGAGCCCCCTCCTCCAGAGAAGCCATTCCTGCCTCATTCC  
CTAGGCCTTTTGCCACCCACCAGCCACACCTGGCAGCCGAGGCTGGCCCCACAGCCCGTCCCCACCT  
GCGGCTTGAGGGGTCGAGTCCAGTGAGAACTCAACAGCAGCTTCCATCCATCCACTGCGGCTCCTGG  
GCTGAGACCACCCCGGTGGCGGGGCAGCAGCGCCGCGGAGAGTCCGGCCCGTCTCCCTCATGGTGC  
CCAGCCAGGCTGGGGCCCAAGGAGGCAGTTCACGGCAGTGCCAGCAGCCTGGTGAAGCGGTCTTGAT  
TTCAGAAGGACTGGGGCAGTTTGTCAAGATCCCAAGTTCATCGAGGTCACCACCAGGAGCTGGCCGAC  
GCCTGCGACATGACCATAGAGGAGATGGAGAGCGCGGCCGACAACATCCTCAGCGGGGGCGCCCCACAGA  
GCCCAATGGCGCCCTTTACCTTTGTGAACTGCAGGGACGCGGGGCAGGACCGAGCCGGGGGCGAAGA  
GGACGCGGGCTGTGTGCGCGCGGGGTGACCGAGTGAGGAGGAGTCCAGGACAGCAGGGTCTACGTC  
AGCAGCCTG

ACGCGTACGCGGCCGCTCGAG - GFP Tag - GTTTAA

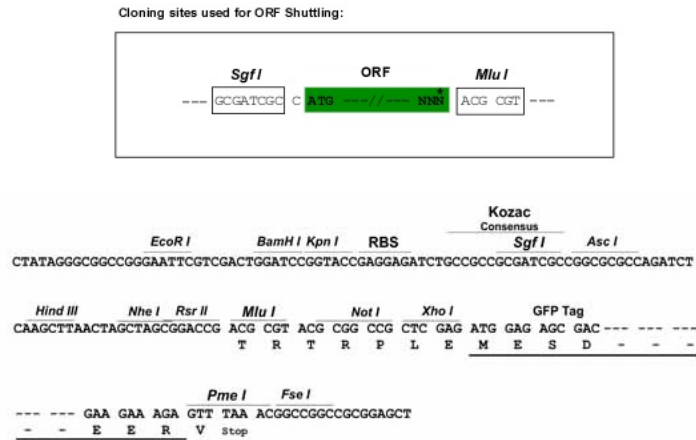
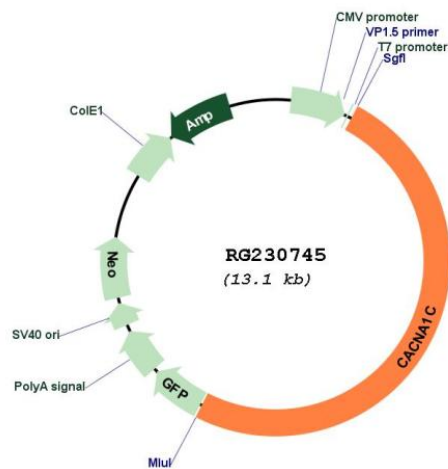
**Protein Sequence:** >RG230745 representing NM\_001167624  
 Red=Cloning site Green=Tags(s)

```

MVNENTRMYIPEENHQGSNYGSPRPAHANMNANAAAGLAPEHIPTPGAALSWQAAIDAARQAKLMGSAGN
ATISTVSTQRKRQYQYKPKKQGSTTATRPPRALLCLTLKNPIRRACISIVEWKPFEEIILLTIFANCVA
LAIYIPFPEDDSNATNSNLERVEYLFLLIIFTVEAFLKVIAYGLLFHPNAYLRNGWNLDFIIVVGLFSA
ILEQATKADGANALGGKAGFDVKALRAFRVLRPLRLVSGVPSLQVVLNSIIKAMVPLLHIALLVLFVII
IYAIIGLELFMGKMHKTCYNQEGIADVPAEDDPSPCALETGHGRQCQNGTVCKPGWDGPKHGITNFDNFA
FAMLTVQCITMEGWTDVLYWMQDAMGYELPWYFVSLVIFGSFFVLNLVLGVLSEFSGKEREKAKARGD
FQKLRKQQLLEEDLKGYLWDWITQAEDIDPENEDEGMDEEKPRNMSMPTSETESVNTENVAGGDIEGENCG
ARLAHRISKSKFSRYWRRWNRFCRRKCAAVKSNVFWLVI FLVFLNLT IASEHYNQPNWLTEVQDTAN
KALLALFTAEMLLKMYSGLQAYFVSLFNRFDCFVVCGGILETILVETKIMSPLGISVLRVLRLLRIFKI
TRYWNSLNLVALLNSVRSIASLLLLLFLFIIIFSLGMLFGGKFNDEMQRTRSTFDNFPQSLLTVF
QILTGEDWNSVMYDGMAYGGPSFPGMLVCIYFIIILFICGNYILLNVFLAIAVDNLADAESLTSQKKEE
EEKERKKLARTASPEKKQELVEKPAVGESKEEKIELKSITADGESPPATKINMDDLQPNENEDKSPYNP
ETTGEDEEEPEMPVGRPRPLSELHLKEKAVPMPEASAFFIFSSNNRFRQLCHRIVNDTIFTNLILFFI
LLSSISLAAEDPVQHTSFRNHILFYFDIVFTTIFTIEIALKMTAYGAFLHKGSFCRNYFNILDLLVVSVS
LISFGIQSSAINVVKILRVLRLRPLRAINRAKGLKHVVQCVFVAIRTIIGNIVIVITLLQFMFACIGVQL
FKGKLYTCSDDSKQTEAECKGNYITYKDGVDHPIIQPRSWENSKFDFDNVLAAMMALFTVSTFEGWPEL
LYRSIDSHTEKGIYNYRVEISIFFIIYIIIIAFFMMNIFVGFVIVTFQEQGEQEYKNCELDKNQRQCV
EYALKARPLRRYIPKNQHQQYKVVVYVNSTYFEYLMFVILLNLTICLAMQHYGQSCLFKIAMNILNMLFTG
LFTVEMILKLI AFKPKGYFSDPWNVDFLIVIGSIIIDVILSETNPAEHTQCSPSMNAEENSRSITFFRL
FRVMRLVKLLSRGEGIRTLWTFIKSFQALPYVALLIVMLFFIYAVIGMQVFGKIALNDTTEINRNNNFQ
TFPQAVLLLFRCATGEAWQDIMLACMPGKKCAPESEPSNSTEGETPCGSSFAVYFISFYMLCAFLIINL
FVAVIMDNFDYLTRDWSILGPHHLDEFKRIWAEYDPEAKGRIKHLDVVTLLRRIQPPLGFGLCPHRVAC
KRLVSMNPLNSDGTVMFNATL FALVRTALRIKTEGNLEQANEELRAIIKKIWKRTSMKLLDQVVPAGD
DEVTVGKFYATFLIQEYFRKFKRKEQGLVGKPSQRNALSLQAGLRTLHDIGPEIRRAISGDLTAEELD
KAMKEAVSAASEDDIFRRAGGLFGNHVSYYSQSDGRSAFPQTFTTQRPLHINKAGSSQGDTESPSHEKLV
STFTPSSYSSTGSNANINNANTALGRLPRPAGYPSTVSTVEGHGPPLSPAIRVQEVAVKLSNRRERHVP
MCEDELRRDSSGAGTQAHCLLLRKANPSRCHSRESQAAMAGQEETSQDETYEVKMNHDTEACSEPSLLS
TEMLSYQDDENRQLTLPEEDKRDIRQSPKRGFLRSASLGRRAFHLECLKRQKDRGGDISQKTVLPLHLV
HHQALAVAGLSPLLQRSHSPASFRPFATPPATPGSRGWPPQVPVTLRLEGVESSEKLNSSFPSIHCGSW
AETTPGGGGSSAARRVRPVSLMVPSQAGAPGRQFHGSASSLVEAVLISEGLGQFAQDPKFI EVTTQELAD
ACDMTIEEMESAADNILSGGAPQSPNGALLPFVNCRDAGQDRAGGEEDAGCVRARGRPSEELQDSRVVY
SSL
  
```

TRTRPLE - GFP Tag - V

**Restriction Sites:** SgfI-MluI

**Cloning Scheme:**

**Plasmid Map:**


**ACCN:** NM\_001167624

**ORF Size:** 6519 bp

**OTI Disclaimer:** The molecular sequence of this clone aligns with the gene accession number as a point of reference only. However, individual transcript sequences of the same gene can differ through naturally occurring variations (e.g. polymorphisms), each with its own valid existence. This clone is substantially in agreement with the reference, but a complete review of all prevailing variants is recommended prior to use. [More info](#)

**OTI Annotation:** This clone was engineered to express the complete ORF with an expression tag. Expression varies depending on the nature of the gene.

<b>Components:</b>	The ORF clone is ion-exchange column purified and shipped in a 2D barcoded Matrix tube containing 10ug of transfection-ready, dried plasmid DNA (reconstitute with 100 ul of water).
<b>Reconstitution Method:</b>	<ol style="list-style-type: none"><li>1. Centrifuge at 5,000xg for 5min.</li><li>2. Carefully open the tube and add 100ul of sterile water to dissolve the DNA.</li><li>3. Close the tube and incubate for 10 minutes at room temperature.</li><li>4. Briefly vortex the tube and then do a quick spin (less than 5000xg) to concentrate the liquid at the bottom.</li><li>5. Store the suspended plasmid at -20°C. The DNA is stable for at least one year from date of shipping when stored at -20°C.</li></ol>
<b>RefSeq:</b>	<u>NM_001167624.1, NP_001161096.1</u>
<b>RefSeq Size:</b>	13585 bp
<b>RefSeq ORF:</b>	6522 bp
<b>Locus ID:</b>	775
<b>UniProt ID:</b>	<u>Q13936</u>
<b>Cytogenetics:</b>	12p13.33
<b>Protein Families:</b>	Druggable Genome, Ion Channels: Calcium, Transmembrane
<b>Protein Pathways:</b>	Alzheimer's disease, Arrhythmogenic right ventricular cardiomyopathy (ARVC), Calcium signaling pathway, Cardiac muscle contraction, Dilated cardiomyopathy, GnRH signaling pathway, Hypertrophic cardiomyopathy (HCM), Long-term potentiation, MAPK signaling pathway, Type II diabetes mellitus, Vascular smooth muscle contraction
<b>Gene Summary:</b>	This gene encodes an alpha-1 subunit of a voltage-dependent calcium channel. Calcium channels mediate the influx of calcium ions into the cell upon membrane polarization. The alpha-1 subunit consists of 24 transmembrane segments and forms the pore through which ions pass into the cell. The calcium channel consists of a complex of alpha-1, alpha-2/delta, beta, and gamma subunits in a 1:1:1:1 ratio. There are multiple isoforms of each of these proteins, either encoded by different genes or the result of alternative splicing of transcripts. The protein encoded by this gene binds to and is inhibited by dihydropyridine. Alternative splicing results in many transcript variants encoding different proteins. Some of the predicted proteins may not produce functional ion channel subunits. [provided by RefSeq, Oct 2012]