

Product datasheet for **RG230742**

WNK1 (NM_014823) Human Tagged ORF Clone

Product data:

Product Type:	Expression Plasmids
Product Name:	WNK1 (NM_014823) Human Tagged ORF Clone
Tag:	TurboGFP
Symbol:	WNK1
Synonyms:	HSAN2; HSN2; KDP; p65; PPP1R167; PRKWNK1; PSK
Mammalian Cell Selection:	Neomycin
Vector:	pCMV6-AC-GFP (PS100010)
E. coli Selection:	Ampicillin (100 ug/mL)
ORF Nucleotide Sequence:	>RG230742 representing NM_014823 Red=Cloning site Blue=ORF Green=Tags(s)

TTTTGTAATACGACTCACTATAGGGCGGCCGGAATTCGTCGACTGGATCCGGTACCGAGGAGATCTGCC
GCC**CGATCGCC**

ATGTCTGGCGGCCCGCAGAGAAGCAGAGCAGCACTCCCGTTCCCTGTTCTCTCGCCGCCGGCTCCTG
CCCCAAGAATGGCTCCAGCTCCGATTCCTCCGTGGGGGAGAACTGGGAGCCGCGGCCGCCGACGCTGT
GACCGGCAGGACCGAGGAGTACAGGCGCCGCCACACTATGGACAAGGACAGCCGTGGGGCGGCCGCG
ACCACTACCACCTGAGCACCCTTCTCCGCCGAGCGTCATCTGTGACTCCAATGCCACTGCACTGG
AGTTCGCCGCCCTTCTCTTTCCCTGCCAGCCAGCATCCCCGCGGCTGTCCCGCAGAGTGCTCCACC
GGAGCCCCACCGGAAGAGACCGTGACCGCCACCGCCACTTCCCAGGTAGCCAGCAGCCTCCAGCCGCT
GCCGCCCTGGGGAACAGGCCGTCGCGGGCCCTGCCCCCTCGACTGTCCCAGCAGTACCAGCAAAGACC
GCCAGTGTCCCAGCCTAGCCTTGTGGGAGCAAAGAGGAGCCGCGCCGCGGAGAAAGTGGCAGCGGCGG
CGGCAGCGCAAGGAGCCACAGGAGGAACGGAGCCAGCAGCAGGATGATATCGAAGAGCTGGAGACCAAG
GCCGTGGGAATGTCTAACGATGGCCGCTTCTCAAGTTTGACATCGAAATCGGCAGAGGCTCCTTTAAGA
CGGTCTACAAAGTCTGGACACTGAAACCACCGTGAAGTGCCTGGTGTGAAGTGCAGGATCGAAAATT
AACAAAGTCTGAGAGGCAGAGATTTAAAGAAGAAGCTGAAATGTTAAAAGTCTTCAGCATCCCAATATT
GTTAGATTTTATGATTCCTGGGAATCCACAGTAAAAGGAAAGTGCATTGTTTGGTGACTGAACTTA
TGACGTCTGAAACACTTAAAACGTATCTGAAAAGGTTTAAAGTATGAAGATCAAAGTCTAAGAAGCTG
GTGCCGTGAGATCCTTAAAGTCTTCAGTTTCTCATACTCGAACTCCACCTATCATTACCCGCGATCTT
AAATGTGACAACATCTTTATCACCGCCCTACTGGCTCAGTCAAGATTGGAGACCTCGGTCTGGCAACCC
TGAAGCGGGCTTCTTTGCCAAGAGTGTGATAGGTACCCAGAGTTCATGGCCCCGAGATGTATGAGGA
GAAATATGATGAATCCGTTGACGTTTATGCTTTTGGGATGTGCATGCTTGAGATGGCTACATCTGAATAT
CCTTACTCGGAGTGCCAAAATGCTGCACAGATCTACCGTCGCGTGACCAGTGGGGTGAAGCCAGCCAGTT
TTGACAAAGTAGCAATTCCTGAAGTGAAGGAAATTATTGAAGGATGCATACGACAAAACAAGATGAAAG
ATATTCATCAAAGACCTTTTGAACCATGCCTTCTCCAAGGAAACAGGAGTACGGGTAGAATTAGCA



[View online >](#)

GAAGAAGATGATGGAGAAAAATAGCCATAAAATTATGGCTACGTATTGAAGATTAAGAATAAAGG
GAAAATACAAAGATAATGAAGCTATTGAGTTTTCTTTGATTTAGAGAGAGATGCCAGAAGATGTTGC
ACAAGAAATGGTAGAGTCTGGGTATGTCTGTGAAGGTGATCACAAGACCATGGCTAAAGCTATCAAAGAC
AGAGTATCATTAAATTAAGAGGAAACGAGAGCAGCGGCAGTTGGTACGGGAGGAGCAAGAAAAAAAAAAGC
AGGAAGAGAGCAGTCTCAAACAGCAGGTAGAACAATCCAGTGCTCCAGACAGGAATCAAGCAGCTCCC
TTCTGCTAGCACCGGCATACCTACTGCTTCTACCACTTCAGTTTCTACACAAGTAGAACCTGAA
GAACCTGAGGCAGATCAACATCAACAACACTACAGTACCAGCAACCCAGTATATCTGTGTTATCTGATGGGA
CGGTTGACAGTGGTCAGGGATCCCTGTCTTACAGAAATCTCGAGTGAGCAGCCAAACAGACAGTTTCATA
TGTTCCCAACATGAACAGGCACATTCTACAGGCACAGTCCCAGGGCATATACCTTCTACTGTCCAAGCA
CAGTCTCAGCCCCATGGGGTATATCCACCCTCAAGTGTGGCACAGGGGCAGAGCCAGGGTCAAGCCATCCT
CAAGTAGCTTAACAGGGGTTTCATCTTCCCAACCCATACAACATCCTCAGCAGCAGGGAATACAGCAGAC
AGCCCCTCTCAACAGACAGTGCAGTATCACTTTCACAGACATCAACCTCCAGTGAGGCCACTACTGCA
CAGCCAGTGAGTCAGCCTCAAGTCCACAAGTCTTGCCTCAAGTATCAGCTGGAAAACAGAGTACTCAGG
GAGTCTCTCAGGTTGCTCCTGCAGAGCCAGTTGCAGTAGCACAGCCAAAGCTACCCAGCCGACCCTTT
GGTTCCTCTGTAGACAGTGCACATTAGATGTTGCTTCAGGTATGAGTGTGGCAATGAGAAGCTCCCA
TCTTCCAGTGGAAAGCATGAAGGAAGAAGTACAAAACGGCATTACCGAAAATCTGTAAAGGAGTCCGCTCTC
GACATGAAAAAATTCACGCCAAAAATTAAGAATTTTGAATGTTTCAAATAAAGGAGACCCAGTAGTAGA
ATGTCAATTAGAGACTCATAATAGGAAAATGGTTACATTCAAATTTGACCTAGATGGTGACAACCCCGAG
GAGATAGCAACAATTATGGTGAACAATGACTTTATTCTAGCAATAGAGAGAGAGTTCGTTTGTGGATCAAG
TGCGAGAAATTAATGAAAAGCTGATGAAATGCTCAGTGAGGATGTCAGTGTGGAACCAGAGGGTATCA
GGGATTGGAGAGTCTACAAGGAAAGGATGACTATGGCTTTTCAGGTTCTCAGAAATTGGAAGGAGAGTTC
AAACAACCAATTCCTGCGTCTTCCATGCCACAGCAAATAGGCATTCCTACCAGTCTTTAACTCAAGTTG
TTCATTTGCGGGAAGGCGGTTTATAGTGAGTCTGTGCCAGAAAGCCGATTACGAGATAAAAAGTTTTT
CCCCAGTGAAATAACAGATACAGTTGCTGCCTCTACAGCTCAGAGCCCTGGAATGAACTTGTCTCACTCT
GCATCATCCCTTAGTCTACAACAGGCCTTTTCTGAACTTAGACGTGCCAAATGACAGAAGGACCCAAACA
CAGCACCTCCAACTTTAGTCTACAGGACCAACATTTCCAGTAGTACCTCCTTTCTAAGTAGCATTGC
TGGAGTCCCAACCACAGCAGCAGCCACAGCACCAGTCCCTGCAACAAGCAGCCCTCCTAATGACATTTCC
ACATCAGTAATTCAGTCTGAGGTTACAGTGCCCACTGAAGAGGGGATTGCTGGAGTTGCCACCAGCACAG
GTGTGGTAACTTCAGGTGGTCTCCCATACCACCTGTGTCTGAATCACCAGTACTTTCCAGCGTAGTTTC
AAGTATACAATACCTGCAGTTGTCTCAATATCTACTACATCCCCGTCACTTCAAGTCCCCACATCCACA
TCTGAGATCGTTGTTTCTAGTACAGCACTGTATCCTTCAGTAACAGTTTCAGCAACTTCAGCCTCTGCAG
GGGCAGTACTGTACCCAGGTCTAAGCCTCCAGCTGTAGTATCTCAGCAGGCAGCAGGCAGCAGCTAC
TGTGGGAGCCACATTAACATCAGTTTCTACCACCACTTCAATCCCAAGCAGGCTTCACAGCTGTGCATT
CAGCTTAGCAGCAGTACTTCTACTCCTACTTTAGCTGAAACCGTGGTAGTTAGCGCACACTCACTAGATA
AGACATCTCATAGCAGTACAACCTGGATTGGCTTTCTCCCTCTCTGCACCATCTTCTCTTCTCTCTCTGG
AGCAGGAGTGTCTAGTTATTTTCTCAGCCTGGTGGGCTGCATCCTTTGGTCATTCCATCAGTGATAGCT
TCTACTCCTATTCTTCCCAAGCAGCAGGACCTACTTCTACACCTTTATTACCCCAAGTACCTAGTATCC
CACCTTGGTACAGCCTGTTGCCAATGTGCCTGCTGTACAGCAGACACTAATTCATAGTCAGCCTCAACC
AGCTTTGCTTCCCAACCAGCCCCATACTCATTGTCTGAAGTAGATTCTGATACACAACCCAAAGCTCCT
GGAATTGATGACATAAAGACTCTAGAAGAAAAGCTGCGGTCTCTGTTTCAGTGAACACAGCTCATCTGGAG
CTCAGCATGCCTCTGTCTCACTGGAGACCTCACTAGTATAGAGAGCACTGTACACCAGGCATCCCAAC
TACTGCTGTTGCACCAAGCAAACCTCTGACTTCTACCACAAGTACTTGTCTTACCACCAACCAATTTACCA
CTAGGAACAGTTGCTTTGCCAGTTACACCAGTGGTACACCTGGGCAAGTTTCTACCCAGTCAGCACTA
CTACATCAGGAGTGAAACCTGGAAGTGTCCCTCCAAGCCACCTCTAACTAAGGCTCCGGTGTGCCAGT
GGGTACTGAACTTCCAGCAGGACTCTACCCAGCGAGCAGCTGCCACCTTTTCCAGGACCTTCTCTAACC
CAGTCCCAGCAACCTCTAGAGGATCTTGATGCTCAATTGAGAAGAACAACCTTAGTCCAGAGATGATCACAG
TGACTTCTGCGGTTGGTCTGTGTCATGGCGGCTCCAACAGCAATCACAGAAGCAGGAACACAGCCTCA
GAAGGTTTCTCAAGTCAAGAAGGCCCTGTCTAGCAACTAGTTCAGGAGCTGGTGTGTTTTAAGATGGGA
CGATTTTCAGGTTTCTGTTGCAGCAGACGGTGCCAGAAAAGAGGGTAAAAATAAGTCAGAAGATGCAAAGT
CTGTTCAATTTGAATCCAGCACCTCAGAGTCTCAGTGCTATCAAGTAGTAGTCCAGAGAGTACCTTGGT
GAAACCAGAGCCGAATGGCATAACCATCCCTGGTATCTCTTCAGATGTGCCAGAGAGTGGCCACAAAAC
ACTGCCTCAGAGGCAAAGTCAGACACTGGGCAGCCTACCAAGGTTGGACGTTTTTCAGGTGACAACACTACAG

CAAACAAAGTGGGTCTTTCTCTGTATCAAAAAGTGGAGACAAGATCACTGACACAAAGAAAGAAGGACC
AGTGGCATCTCCTCCTTTTATGGATTTGGAACAAGCTGTTCTTCTGCTGTGATACCAAAGAAAGAGAAG
CCTGAAGTGTGACAGCCTTACATCTAAATGGGCCGTCTTCTGACCCGGAGGCCGCTTTTTTAAGTAGGG
ATGTGGATGATGGTCCGGTAGTCCACTCGCCCATCAGCTGAGCTCAAAGAGCCTTCTAGCCAGAA
TCTAAGTCAAAGCCTTAGTAATTCATTTAACTCCTTACATGAGTAGCGACAATGAGTCAGATATCGAA
GATGAAGACTTAAAGTTAGAGCTGCGAGACTACGAGATAAACATCTCAAAGAGATTGAGGACATGCAGA
GTCGCCAGAAGCATGAAATTGAATCTTTGTATACCAAAGTGGCAAGGTGCCCTGCTGTTATTATTCC
CCCAGCTGCTCCCCTTTCAGGGAGAAGACGACCCCACTAAAAGCAAAGGCAGCAAATCTAGTCGAAGC
AGTTCCTTGGGAATAAAAAGCCCCAGCTTTCAGGTAACCTGTCTGGTCAGAGTGCAGCTTCAGTCTTGC
ACCCCCAGCAGACCCTCCACCCTCCTGGCAACATCCCAGAGTCCGGGCAGAATCAGCTGTTACAGCCCT
TAAGCCATCTCCTCCAGTGACAACCTCTATTAGCCTTACCAGTGTGGTGCCATTTTACAGTACCAAGC
CTTTCTGCTCCAGGTCAAGGAACCAGCAGCACAACACTGTTGGGGCAACAGTGAACAGCCAAGCCGCC
AAGCTCAGCCTCCTGCCATGACGTCCAGCAGGAAGGGCACATTCACAGATGACTTGCACAAGTTGGTAGA
CAATTGGGCCGAGATGCCATGAATCTCTCAGGCAGGAGAGGAAGCAAAGGGCACATGAATTACGAGGGC
CCTGGAATGGCAAGGAAGTTCTCTGCACCTGGGCAACTGTGCATCTCCATGACCTCGAACCTGGGTGGT
CTGCCCCATCTCTGCAGCATCAGTACCTCTCTAGGTCACTTACCAAGTCTATGTGCCCCCACAGCA
GTATGGCTTTCCAGCTACCCATTTGGCGCTCAATGGAGTGGGACGGGTGGCCAGCACCACAGCCACTT
GGCCAGTTC AACCTGTGGGAAGTGCCTCCTTGCAGAATTTAACATCAGCAATTTGCAGAAATCCATCA
GCAACCCCCAGGCTCCAACCTGCGGACCACT

ACGCGTACGCGGCCGCTCGAG - GFP Tag - GTTTAA

Protein Sequence: >RG230742 representing NM_014823
 Red=Cloning site Green=Tags(s)

```

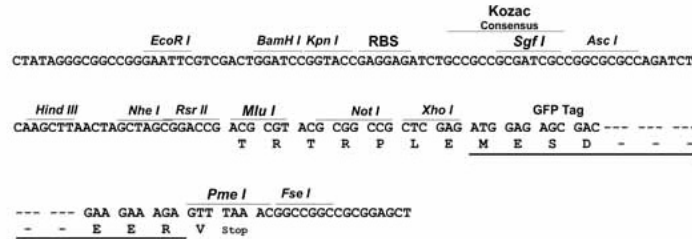
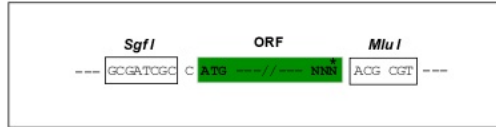
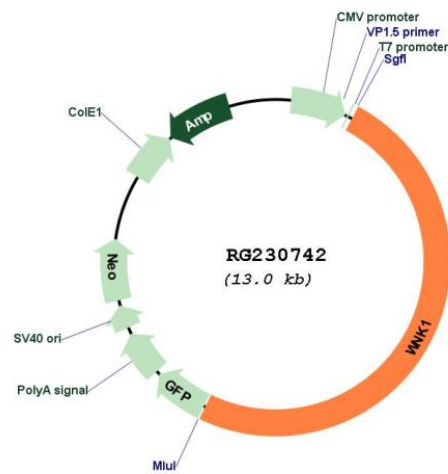
MSGGAAEQSSTPGSLFLSPPAPAPKNGSSSDSSVGEKLGAAAADAVTGRTEEYRRRRHTMDKDSRGAAA
TTTTTEHRFFRRSVICDSNATALELPGLPLSLPQPSIPAAPVQSAPPEPHREETVATATSQVAQQPPAA
AAPGEQAVAGPAPSTVPSSTSKDRPVSQPSLVGSKEEPPPARSGSGGSAKEPQEERSQQQDDIEELETK
AVGMSNDGRFLKFDIEIGRGSFKTVYKGLDTETTVEVAVWCELQDRKLTSESRQRFKEEAEMLKGLQHPNI
VRFYDSWESTVKGKCIVLVTELMTSGTLKTYLKRKVMKIKVLRSWCRQILKGLQFLHTRTPPIIHRDL
KCDNIFITGPTGSVKIGDLGLATLKRASFAKSVIGTPEFMAPEMYEEKYDESVDVYAFGMCMLEMATSEY
PYSECQNAAQIYRRVTSVGPASFDKVAIPEVKEIIIEGCIQNKDERYSIKDLLNHAFQEEETGVRVELA
EEDDGEKIAIKLWLRIEDIKKLGKYKDNEAIEFSFDLERDVPEDVAQEMVESGYVCEGDHKTMAKAIKD
RVSLIKRKRQRLVREEQEKKKQEESLQKQVEQSSASQTGIKQLPSASTGIPTASTTSASVSTQVEPE
EPEADQHQQLQYQQPSISVLSDGTVDSDGQSSVFTESRVSSQQTVSYSQHEQAHSSTGTVPGHIPSTVQA
QSQPHGVYPPSSVAQGSQGPSSSLTGVSSSQPIQHPQQQGIQQTAPPQQTQVQYSLQSTSTSEATTA
QPVSQPAPQVLPQVSAGKQSTQGVSVQVAPAEVAVATQATQPTTLASSVDSAHSDVASGMSDGNENVP
SSSGRHEGRTTKRHYRKSRSRSHKTSRPLKRLILNVSNGDRVVECCLETHNRKMVTFKFDLDGDNPE
EATIMVNNDFILAIERESFVDQVREIEKADEMLSEDVSVPEPQDQGLESLQGGDDYGFSGSQKLEGEF
KQPIPASSMPQIGIPTSSLTQVVHAGRRFIVSPVPELRESKVFPEITDTVAASTAQSPGMNLSHS
ASSLSLQAFSELRRQMTEGPNAPPNF SHTGPTFPVVPFLLSIAAGVPTTAAATAPVPATSSPPNDIS
TSVIQSEVTVPTEEGIAGVATSTGVVTSGLPIPPVSESPVLSVVSSITIPAVVSIITTSPLQVPTST
SEIVVSSALYPSVTVSATSASAGGSTATPGPKPPAVVSQQAAGSTTVGATLTSVSTTTSFPSTASQLCI
QLSSSTSTPTLAETVVVSAHSLDKTSHSSTTGLAFSLAPSSSSSPGAGVSSYISQPGGLHPLVIPSVIA
STPILPQAAGPTSTPLLPQVPSIPPLVQPVANVPAVQQLIHSQPPALLPNQPHTHCPEVSDTQPKAP
GIDDIKTLEEKLRSLFSEHSSGAQHASVLETSLVIESTVTPGIPTTAVAPSKLLTSTTSTCLPPTNLP
LGTVALPVTPVTPGQVSTPVSTTSGVKPGTAPSKPPLTKAPVLPVGTLPAGTLPSEQLPPFPGPSLT
QSQQPLEDLDAQLRRTLSPEMITVTSVAVGPMASMAPTAITEAGTQPQKVSQVKEGVPVATSSGAGVFKMG
RFQVSVAAADGAQKEGKNKSEDAKSVHFESSTSESVLSSSSPESTLVKPEPNGITIPGISSDVPESAHT
TASEAKSDTGQPTKVGRFQVTTTANKVGRFVSKTEDKIDTKKEGVPVSPFMDLEQAVLPAVIPKKEK
PELSEPSHLNGPSSDPEAAFLSRDVEDDGGSPHSPHQLSSKSLPSQNLQSLSNSFNSSYSSDNESDIE
DEDLKLRLRDLKHLKEIQDLQSRQKHEIESLYTKLGKVPVAVIIPPAAPLSGRRRRPTKSKGSKSSRS
SSLGNKSPQLSGNLGGQSAASVLPQTLHPPGNIPESGQNLQPLKPSPPSSDNLYSFTSDGAI SVPS
LSAPGQGTSSNTVGATVNSQAAQAQPPAMTSSRKGTF TDDLHKLVDNWARDAMNLSGRRGSKGHMNYEG
PGMARKFSAPGQLCISMTSNLGGSAPIASAATSLGHFTKSMCPPQYGFPAFPFGAQWSGTGGPAPQPL
GQFQPVGTASLQNFNISNLQKSI SNPPGSNLRTT
  
```

TRTRPLE - GFP Tag - V

Restriction Sites: SgfI-MluI

Cloning Scheme:

Cloning sites used for ORF Shutting:


Plasmid Map:

ACCN:

NM_014823

ORF Size:

6402 bp

OTI Disclaimer:

The molecular sequence of this clone aligns with the gene accession number as a point of reference only. However, individual transcript sequences of the same gene can differ through naturally occurring variations (e.g. polymorphisms), each with its own valid existence. This clone is substantially in agreement with the reference, but a complete review of all prevailing variants is recommended prior to use. [More info](#)

OTI Annotation:

This clone was engineered to express the complete ORF with an expression tag. Expression varies depending on the nature of the gene.

Components:	The ORF clone is ion-exchange column purified and shipped in a 2D barcoded Matrix tube containing 10ug of transfection-ready, dried plasmid DNA (reconstitute with 100 ul of water).
Reconstitution Method:	<ol style="list-style-type: none">1. Centrifuge at 5,000xg for 5min.2. Carefully open the tube and add 100ul of sterile water to dissolve the DNA.3. Close the tube and incubate for 10 minutes at room temperature.4. Briefly vortex the tube and then do a quick spin (less than 5000xg) to concentrate the liquid at the bottom.5. Store the suspended plasmid at -20°C. The DNA is stable for at least one year from date of shipping when stored at -20°C.
RefSeq:	NM_014823.3
RefSeq Size:	9717 bp
RefSeq ORF:	6405 bp
Locus ID:	65125
UniProt ID:	Q9H4A3
Cytogenetics:	12p13.33
Protein Families:	Druggable Genome, Protein Kinase
Gene Summary:	This gene encodes a member of the WNK subfamily of serine/threonine protein kinases. The encoded protein may be a key regulator of blood pressure by controlling the transport of sodium and chloride ions. Mutations in this gene have been associated with pseudohypoaldosteronism type II and hereditary sensory neuropathy type II. Alternatively spliced transcript variants encoding different isoforms have been described but the full-length nature of all of them has yet to be determined.[provided by RefSeq, May 2010]